

UNITED STATES  
DEPARTMENT OF THE INTERIOR  
BUREAU OF LAND MANAGEMENT

SUBMIT IN TRIPLICATE\*  
(Other instructions on  
reverse side)

FORM APPROVED  
OMB NO. 1004-0136  
Expires: February 28, 1995

APPLICATION FOR PERMIT TO DRILL OR DEEPEN

1a. TYPE OF WORK

DRILL ☒

DEEPEN ☐

b. TYPE OF WELL

OIL  
WELL ☐

GAS  
WELL ☒

OTHER ☐

SINGLE  
ZONE ☒

MULTIPLE  
ZONE ☐

2. NAME OF OPERATOR

Cross Timbers Operating Company

3. ADDRESS AND TELEPHONE NO.

2700 Farmington Ave., Bldg. K. Ste 1 Farmington, NM 87401

4. LOCATION OF WELL (Report location clearly and in accordance with any State requirements.)

At surface

900' FNL & 1,810' FWL

At proposed prod. zone

14. DISTANCE IN MILES AND DIRECTION FROM NEAREST TOWN OR POST OFFICE\*

This well is located approx 9 miles Northwest of the Blanco, NM Post Office.

15. DISTANCE FROM PROPOSED\*

LOCATION TO NEAREST

PROPERTY OR LEASE LINE, FT.

(Also to nearest drlg. unit line, if any) 900'

16. NO. OF ACRES IN LEASE

321.48

17. NO. OF ACRES ASSIGNED  
TO THIS WELL

321.48  $\frac{1}{2}$

18. DISTANCE FROM PROPOSED LOCATION\*

TO NEAREST WELL, DRILLING, COMPLETED,

OR APPLIED FOR, ON THIS LEASE, FT.

250'

19. PROPOSED DEPTH

7,425' —

20. ROTARY OR CABLE TOOLS

0-7,425' Rotary Tools

21. ELEVATIONS (Show whether DF, RT, GR, etc.)

6,130' Ground Level —

22. APPROX. DATE WORK WILL START\*

Summer 2001

23. PROPOSED CASING AND CEMENTING PROGRAM

SIZE OF HOLE	GRADE SIZE OF CASING	WEIGHT PER FOOT	SETTING DEPTH	QUANTITY OF CEMENT
12-1/4"	9-5/8" H-40	36 #/ft	+350'	+ 185 sx c1 B cmt Cinc
7-7/8"	4-1/2" J-55	10.5 #/ft	+7425' —	+ 765 sx cmt Cinc

This action is subject to technical and  
procedural review pursuant to 43 CFR 3165.3,  
and appeal pursuant to 43 CFR 3165.4.

Cross Timbers plans to drill the above mentioned well as described in the enclosed Surface Use Program.

ALL ACTIONS ARE  
SUBJECT TO COMPLIANCE WITH ATTACHED  
"GENERAL REQUIREMENTS"

IN ABOVE SPACE DESCRIBE PROPOSED PROGRAM: If proposal is to deepen, give data on present productive zone and proposed new productive zone. If proposal is to drill or deepen directionally, give pertinent data on subsurface locations and measured and true vertical depths. Give blowout preventer program, if any.

24.

SIGNED

TITLE Drilling Engineer

DATE 7/16/01

(This space for Federal or State office use)

PERMIT NO.

APPROVAL DATE

Application approval does not warrant or certify that the applicant holds legal or equitable title to those rights in the subject lease which would entitle the applicant to conduct operations thereon.

CONDITIONS OF APPROVAL, IF ANY:

NMCCB

APPROVED BY

/s/ Joel Farrell

TITLE

DATE

AUG 2 2001

\*See Instructions On Reverse Side

Title 18 U.S.C. Section 1001, makes it a crime for any person knowingly and willfully to make to any department or agency of the United States any false, fictitious or fraudulent statements or representations as to any matter within its jurisdiction.

DISTRICT I  
P.O. Box 1980, Hobbs, N.M. 88241-1980

DISTRICT II  
P.O. Drawer DD, Artesia, N.M. 88211-0719

DISTRICT III  
1000 Rio Brazos Rd., Aztec, N.M. 87410

DISTRICT IV  
PO Box 2088, Santa Fe, NM 87504-2088

State of New Mexico  
Energy, Minerals & Natural Resources Department

OIL CONSERVATION DIVISION

P.O. Box 2088  
Santa Fe, NM 87504-2088

Form C-102  
Revised February 21, 1994  
Instructions on back  
Submit to Appropriate District Office  
State Lease - 4 Copies  
Fee Lease - 3 Copies

REC'D / SAN JUAN

APR 2 2001

☐ AMENDED REPORT

WELL LOCATION AND ACREAGE DEDICATION PLAT

<sup>1</sup> API Number 30-065-30735	<sup>2</sup> Pool Code 72319	<sup>3</sup> Pool Name BLANCO MESAUEDE
<sup>4</sup> Property Code 22588	<sup>5</sup> Property Name BASSETT	<sup>6</sup> Well Number 1R
<sup>7</sup> GRID No. 167067	<sup>8</sup> Operator Name CROSS TIMBERS OPERATING CO.	<sup>9</sup> Elevation 6130'

<sup>10</sup> Surface Location

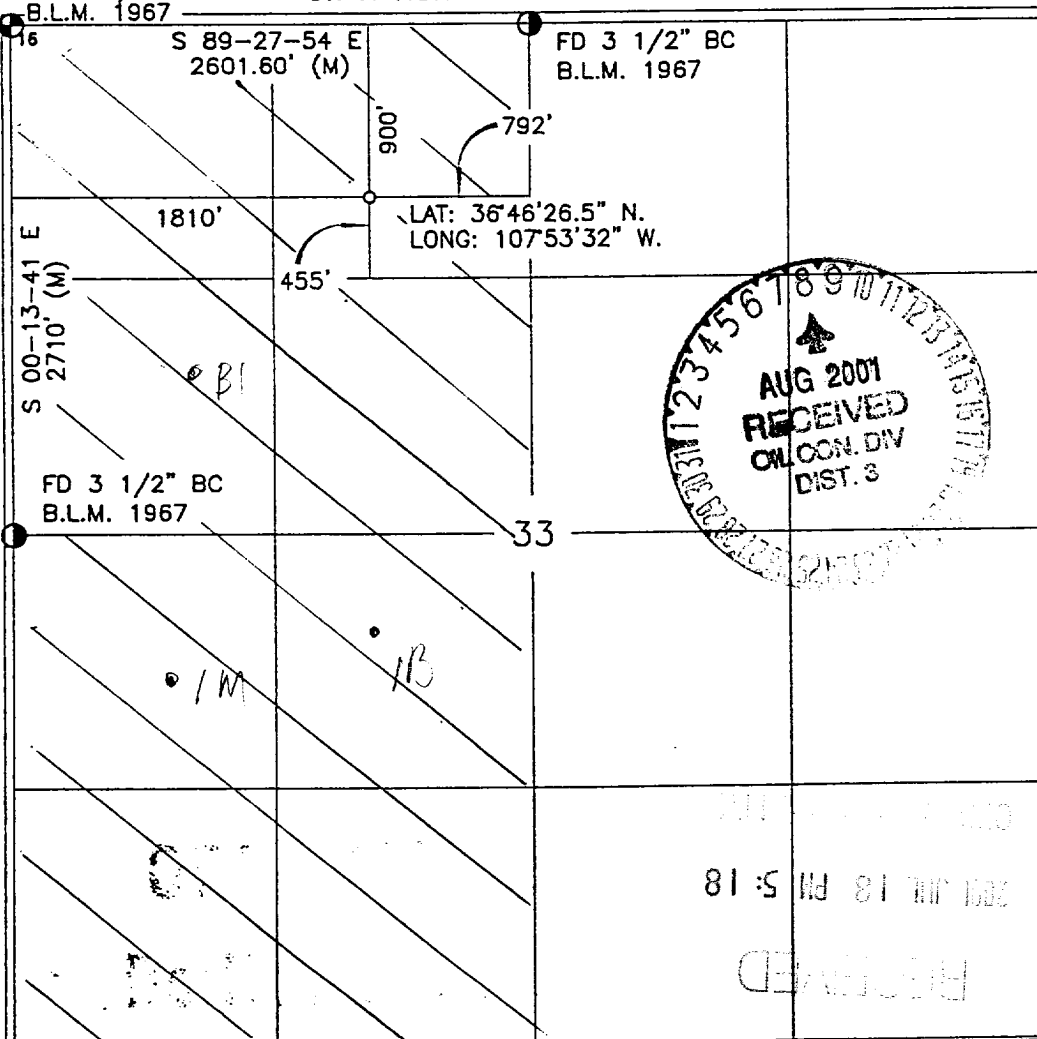
UL or lot no.	Section	Township	Range	Lot Idn	Feet from the	North/South line	Feet from the	East/West line	County
C	33	30-N	10-W		900'	NORTH	1810'	WEST	SAN JUAN

<sup>11</sup> Bottom Hole Location If Different From Surface

UL or lot no.	Section	Township	Range	Lot Idn	Feet from the	North/South line	Feet from the	East/West line	County

<sup>12</sup> Dedicated Acres 321.48 W/2	<sup>13</sup> Joint or Infill	<sup>14</sup> Consolidation Code	<sup>15</sup> Order No.
---	-------------------------------	----------------------------------	-------------------------

NO ALLOWABLE WILL BE ASSIGNED TO THIS COMPLETION UNTIL ALL INTERESTS HAVE BEEN CONSOLIDATED  
FD 3 1/2" BC OR A NON-STANDARD UNIT HAS BEEN APPROVED BY THE DIVISION  
B.L.M. 1967



<sup>17</sup> OPERATOR CERTIFICATION

I hereby certify that the information contained herein is true and complete to the best of my knowledge and belief

Signature Jeffrey W. Patton  
Printed Name JEFFREY W. PATTON  
Title DRILLING ENGINEER  
Date 7-16-01

<sup>18</sup> SURVEYOR CERTIFICATION

I hereby certify that the well location shown on this plat was plotted from field notes of actual surveys made by me or under my supervision, and that the same is true and correct to the best of my belief.

Date of Survey 3-26-01  
Signature and Seal of Professional Surveyor ROY A. RUSH  
8894  
Certificate Number 8894

DISTRICT I  
P.O. Box 1980, Hobbs, N.M. 88241-1980

DISTRICT II  
P.O. Drawer DD, Artesia, N.M. 88211-0719

DISTRICT III  
1000 Rio Brazos Rd., Aztec, N.M. 87410

DISTRICT IV  
PO Box 2088, Santa Fe, NM 87504-2088

State of New Mexico  
Energy, Minerals & Natural Resources Department

OIL CONSERVATION DIVISION

P.O. Box 2088  
Santa Fe, NM 87504-2088

Form C-102  
Revised February 21, 1994

Instructions on back  
Submit to Appropriate District Office  
State Lease - 4 Copies  
Fee Lease - 3 Copies

REC'D / SAN JUAN

APR 2 2001

☐ AMENDED REPORT

WELL LOCATION AND ACREAGE DEDICATION PLAT

<sup>1</sup> API Number	<sup>2</sup> Pool Code 71599	<sup>3</sup> Pool Name BASIN DAKOTA
<sup>4</sup> Property Code	<sup>5</sup> Property Name BASSETT	<sup>6</sup> Well Number 1R
<sup>7</sup> GRID No. 167067	<sup>8</sup> Operator Name CROSS TIMBERS OPERATING CO.	<sup>9</sup> Elevation 6130'

<sup>10</sup> Surface Location

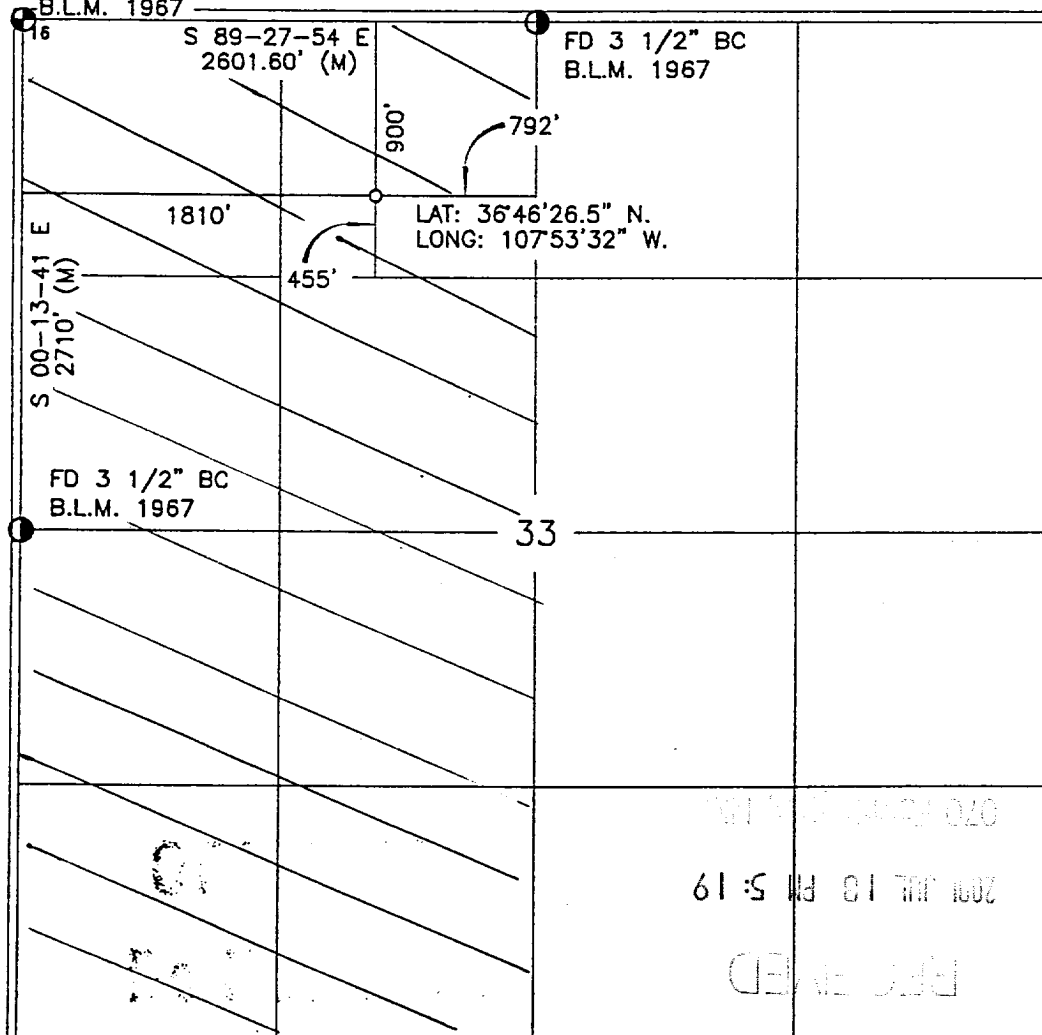
UL or lot no.	Section	Township	Range	Lot Idn	Feet from the	North/South line	Feet from the	East/West line	County
C	33	30-N	10-W		900'	NORTH	1810'	WEST	SAN JUAN

<sup>11</sup> Bottom Hole Location If Different From Surface

UL or lot no.	Section	Township	Range	Lot Idn	Feet from the	North/South line	Feet from the	East/West line	County
---------------	---------	----------	-------	---------	---------------	------------------	---------------	----------------	--------

<sup>12</sup> Dedicated Acres 321.48 W/2	<sup>13</sup> Joint or Infill	<sup>14</sup> Consolidation Code	<sup>15</sup> Order No.
---	-------------------------------	----------------------------------	-------------------------

NO ALLOWABLE WILL BE ASSIGNED TO THIS COMPLETION UNTIL ALL INTERESTS HAVE BEEN CONSOLIDATED  
FD 3 1/2" BC OR A NON-STANDARD UNIT HAS BEEN APPROVED BY THE DIVISION  
B.L.M. 1967



<sup>17</sup> OPERATOR CERTIFICATION

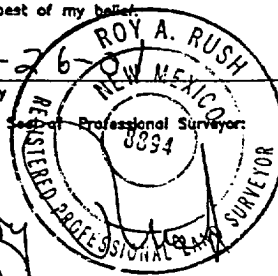
I hereby certify that the information contained herein is true and complete to the best of my knowledge and belief

Signature: *Jeffrey W. Patton*  
Printed Name: JEFFREY W. PATTON  
Title: DRILLING ENGINEER  
Date: 7-16-01

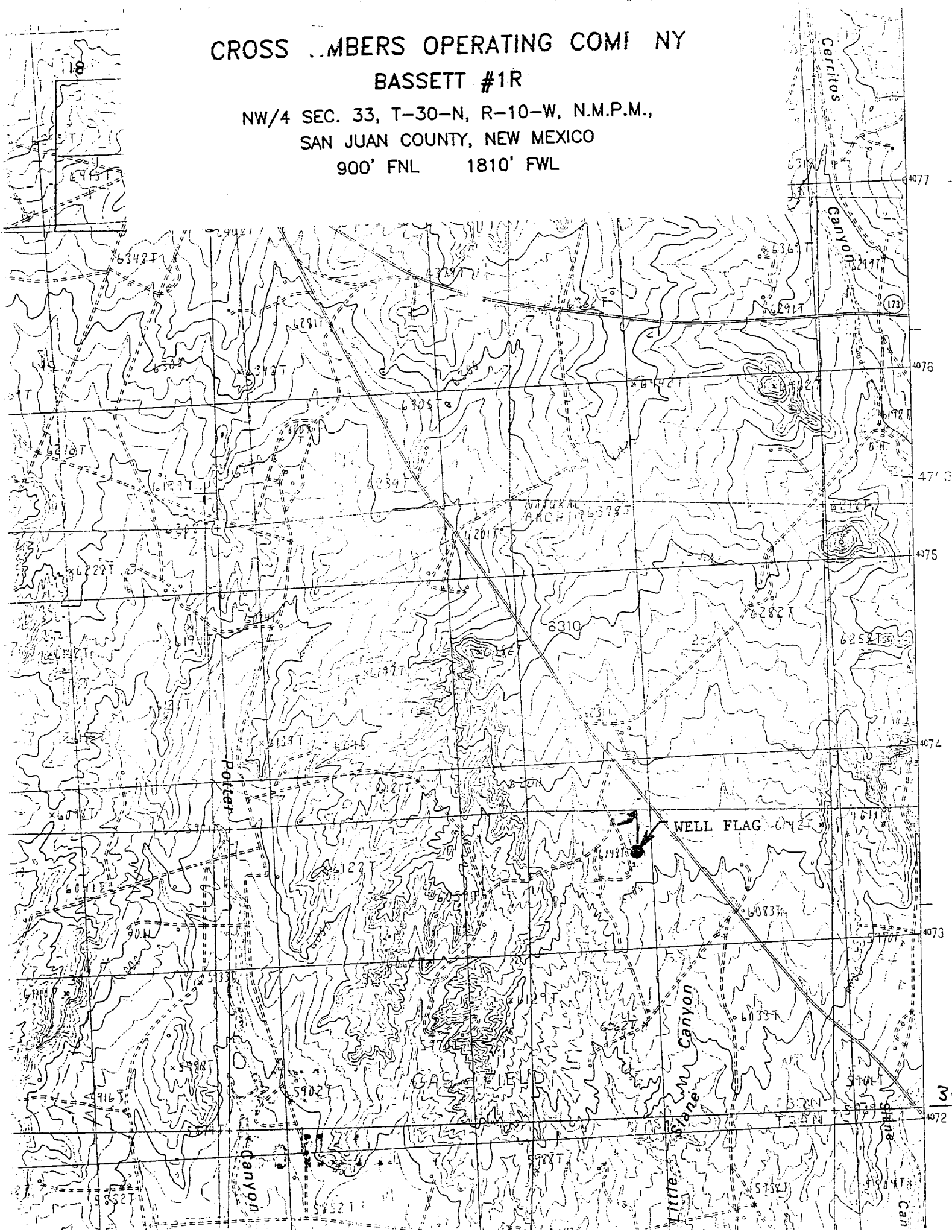
<sup>18</sup> SURVEYOR CERTIFICATION

I hereby certify that the well location shown on this plat was plotted from field notes of actual surveys made by me or under my supervision, and that the same is true and correct to the best of my belief.

Date of Survey: 3-26-01  
Signature and Seal of Professional Surveyor: *Roy A. Rush*  
Certificate Number: 8894



900' FNL      1810' FWL





Cross Timbers Operating Company

## BOP SCHEMATIC FOR DRILLING OPERATIONS CLASS 1 (2M) NORMAL PRESSURE

ROTATING HEAD  
(OPTIONAL)

FILL UP LINE

FLOW LINE  
TO PIT

BLIND  
RAMS

PIPE  
RAMS

KILL LINE  
2" dia min.

TO CHOKE  
MANIFOLD  
2" dia min.

See Choke Manifold drawing for  
specifications

HCR VALVE (OPTIONAL)

2" (MIN) FULL OPENING  
VALVE

MUD CROSS

\*\* Remove check or ball  
from check valve and  
press test to same press  
as BOP's \*\*

1. Test BOP after installation:

Pressure test BOP to 200-300  
psig (low pressure) for 5 min.

Test BOP to Working Press or  
to 70% internal yield of surf csg  
(10 min).

2. Test operation of (both) rams  
on every trip.

3. Check and record Accumulator  
pressure on every tour.

4. Re-pressure test BOP stack after  
changing out rams.

5. Have kelly cock valve with handle available.

6. Have safety valve and subs to fit all sizes of  
drill string.

TESTING  
PROCEDURE