

UNITED STATES
DEPARTMENT OF THE INTERIOR
BUREAU OF LAND MANAGEMENT

SUBMIT IN TRIPLICATE

FORM APPROVED
OMB NO. 1004-0136

EXPEDITED Right-of-Way

APPLICATION FOR PERMIT TO DRILL OR DEEPEN

1a. TYPE OF WORK

DRILL ☒DEEPEN ☐

b. TYPE OF WELL

OIL WELL ☐ GAS WELL ☒ OTHERSINGLE ZONE ☒MULTIPLE ZONE ☐

2. NAME OF OPERATOR

Koch Exploration Company

Burlington Resources (see next page)

3. ADDRESS AND TELEPHONE NO.

P.O. Box 489, Aztec, NM 87410 (505) 334-9111

4. LOCATION OF WELL (Report location clearly and in accordance with any State requirements.)*

At surface

1670 4750' FNL & 935' FEL

At proposed prod. zone

Same

14. DISTANCE IN MILES AND DIRECTION FROM NEAREST TOWN OR POST OFFICE*

Approx. 1 mile SW of Aztec, NM

15. DISTANCE FROM PROPOSED* LOCATION TO NEAREST PROPERTY OR LEASE LINE, FT. (Also to nearest drlg. unit line, if any)

935'

16. NO. OF ACRES IN LEASE

78.20

17. NO. OF ACRES ASSIGNED TO THIS WELL

315.05 N/2

18. DISTANCE FROM PROPOSED* LOCATION TO NEAREST WELL, DRILLING, COMPLETED, OR APPLIED FOR ON THE LEASE, FT.

138'

19. PROPOSED DEPTH

2300'

20. ROTARY OR CABLE TOOLS

Rotary

21. ELEVATIONS (Show whether DF, RT, GR, etc.)

5805' GR

22. APPROXIMATE DATE WORK WILL START*

12/7/2001

PROPOSED CASING AND CEMENTING PROGRAM

23	SIZE OF HOLE	GRADE, SIZE OF CASING	WEIGHT PER FOOT	SETTING DEPTH	QUANTITY OF CEMENT
	12 1/4"	9 5/8" J-55	36#	220' +/-	112
	7 7/8"	5 1/2" J-55	15.5#	2300' +/-	300

See Attached

This action is subject to technical and procedural review pursuant to 43 CFR §160.8 and appeal pursuant to 43 CFR §160.4.

DRILLING OPERATIONS AUTHORIZED ARE
SUBJECT TO COMPLIANCE WITH ATTACHED
"GENERAL REQUIREMENTS"

IN ABOVE SPACE DESCRIBE PROPOSED PROGRAM: If proposal is to deepen, give data on present productive zone and proposed new productive zone. If proposal is to drill or deepen directionally, give pertinent data on subsurface locations and measured and true vertical depths. Give blowout preventer program, if any.

24

SIGNED:

TITLE: Operations Manager

DATE:

7/20/01

(This space for Federal or State office use)

APPROVAL DATE

PERMIT NO.:

Application approval does not warrant or certify that the applicant holds legal or equitable title to those rights in the subject lease which would entitle the applicant to conduct operations thereon.
CONDITIONS OF APPROVAL, IF ANY:

APPROVED BY:

TITLE:

AEM

DATE:

12/14/01

submitted in lieu of Form 3160-5

UNITED STATES
DEPARTMENT OF THE INTERIOR
BUREAU OF LAND MANAGEMENT

2001 12 14 03:57 Sundry Notices and Reports on Wells

1. Type of Well
GAS

2. Name of Operator

**BURLINGTON
RESOURCES**

OIL & GAS COMPANY

3. Address & Phone No. of Operator

PO Box 4289, Farmington, NM 87499 (505) 326-9700

4. Location of Well, Footage, Sec., T, R, M

1670' FNL, 940' FEL, Sec.20, T-30-N, R-11-W, NMMP

5. Lease Number
NMSF078138

6. If Indian, All. or
Tribe Name

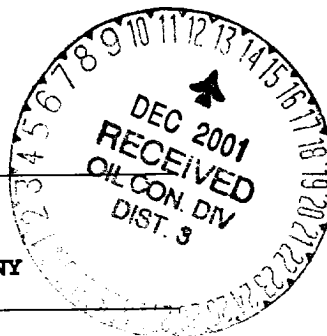
7. Unit Agreement Name

8. Well Name & Number
Carle #100

9. API Well No.
30-045-

10. Field and Pool
Basin Fruitland Coal

11. County and State
San Juan Co, NM



12. CHECK APPROPRIATE BOX TO INDICATE NATURE OF NOTICE, REPORT, OTHER DATA

Type of Submission

☒ Notice of Intent
☐ Subsequent Report
☐ Final Abandonment

Type of Action

☐ Abandonment
☐ Recompletion
☐ Plugging Back
☐ Casing Repair
☐ Altering Casing
☒ Other - name change
☒ Change of Plans
☐ New Construction
☐ Non-Routine Fracturing
☐ Water Shut off
☐ Conversion to Injection

13. Describe Proposed or Completed Operations

The well name of the subject well has been changed from Carle #1C to Carle #100 and the footages have been corrected. Attached is a revised C-102 plat and operations plan.

14. I hereby certify that the foregoing is true and correct.

Signed Peggy Call Title Regulatory Supervisor Date 11/12/01
TLW

(This space for Federal or State Office use)

APPROVED BY [Signature] Title AFM Date 12/14/01

CONDITION OF APPROVAL, if any:

Title 18 U.S.C. Section 1001, makes it a crime for any person knowingly and willfully to make to any department or agency of the United States any false, fictitious or fraudulent statements or representations as to any matter within its jurisdiction.

NMOCD

DISTRICT I
1825 N. French Dr., Hobbs, N.M. 88240

State of New Mexico
Energy, Minerals & Natural Resources Department

Form C-102
Revised August 15, 2000

DISTRICT II
611 South First, Artesia, N.M. 88210

Submit to Appropriate District Office
State Lease - 4 Copies
Fee Lease - 3 Copies

DISTRICT III
1000 Rio Brazos Rd., Aztec, N.M. 87410

OIL CONSERVATION DIVISION
2040 South Pacheco
Santa Fe, NM 87505

☐ AMENDED REPORT

DISTRICT IV
2040 South Pacheco, Santa Fe, NM 87505

WELL LOCATION AND ACREAGE DEDICATION PLAT

¹ API Number 30-045 30741	² Pool Code 71629	³ Pool Name Basin Fruitland Coal
⁴ Property Code 28915	⁵ Property Name CARLE	⁶ Well Number 100
⁷ OGRID No. 14538	⁸ Operator Name BURLINGTON RESOURCES OIL & GAS, INC.	⁹ Elevation 5805'

¹⁰ Surface Location

UL or lot no.	Section	Township	Range	Lot Idn	Feet from the	North/South line	Feet from the	East/West line	County
H	20	30-N	11-W		1670	NORTH	940	EAST	SAN JUAN

¹¹ Bottom Hole Location If Different From Surface

UL or lot no.	Section	Township	Range	Lot Idn	Feet from the	North/South line	Feet from the	East/West line	County
¹² Dedicated Acres FC-N/315.05			¹³ Joint or Infill		¹⁴ Consolidation Code		¹⁵ Order No.		

NO ALLOWABLE WILL BE ASSIGNED TO THIS COMPLETION UNTIL ALL INTERESTS HAVE BEEN CONSOLIDATED
OR A NON-STANDARD UNIT HAS BEEN APPROVED BY THE DIVISION

WRIGHT	FD 3 1/4" BLM BC. 1969	LOT 3	LOT 2 USA SF-078402-A	1670'	LOT 1	FD 3 1/4" BLM BC. 1969
		BRUINGTON	LOT 4 USA SF-078138	328'	LOT 5 940' E 345'	FD 3 1/4" BLM BC. 1969
LAT. 36-48-01.3 N LONG. 108-00-27.7 W (N.A.D. 1927)		LOT 6				
Re-issued to show correct footage						
LOT 7	LOT 8	LOT 9				

DEC 2001
RECEIVED
C. G. BLOOM

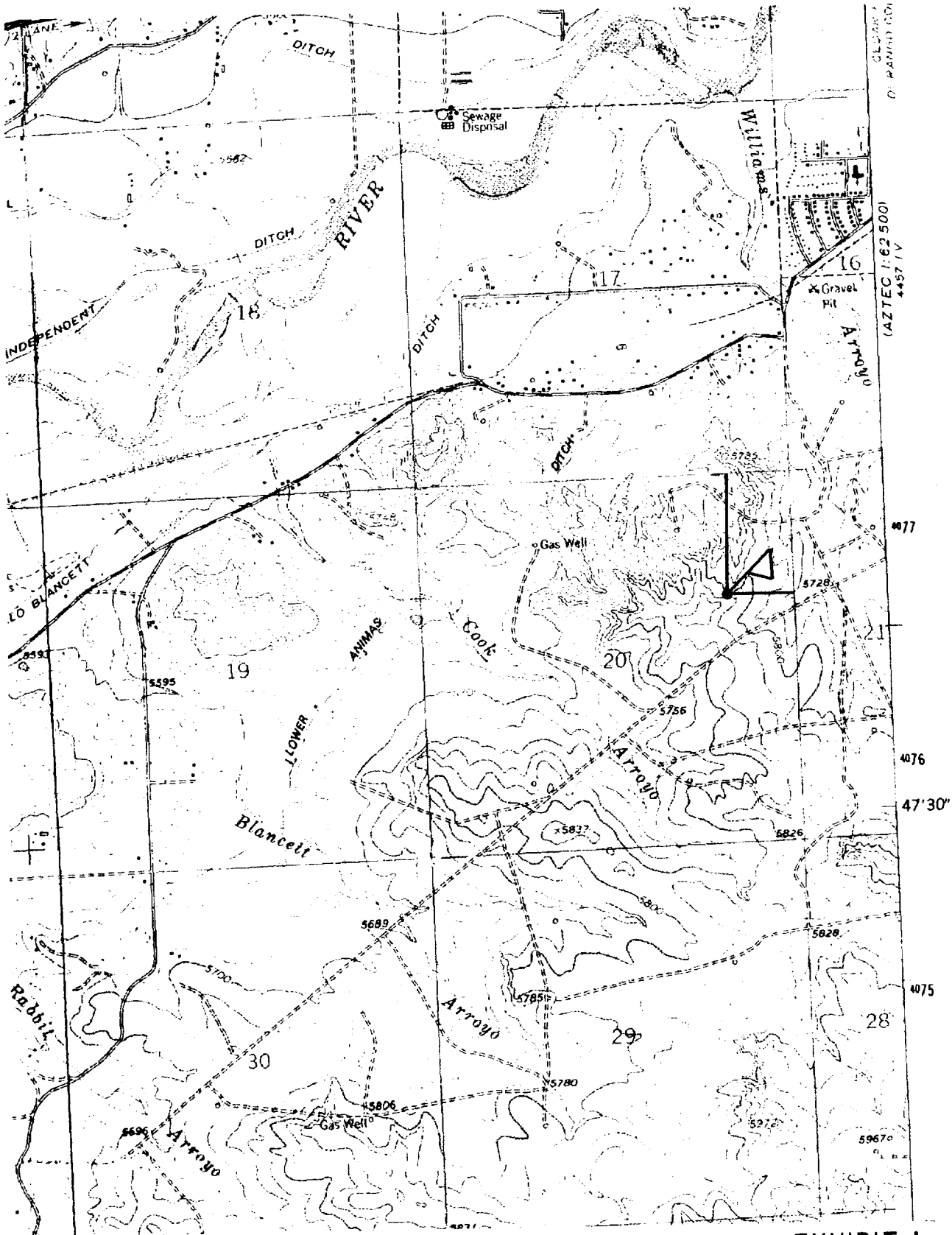
17 OPERATOR CERTIFICATION
I hereby certify that the information contained herein is true and complete to the best of my knowledge and belief.
Peggy Cole
Signature
Peggy Cole
Printed Name
Regulatory Supervisor
Title
11-13-01
Date

18 SURVEYOR CERTIFICATION
I hereby certify that the well location shown on this plat was plotted from field notes of actual surveys made by me or under my supervision, and that the same is true and correct to the best of my knowledge and belief.
Date of Survey
Signature
8894
REGISTERED PROFESSIONAL LAND SURVEYOR
8894
Certificate Number

KOCH EXPLORATION CO.

CARLE #1C

1750' FNL, 935' FEL, EL. 5834
SECTION 20, T-30-N, R-11-W, N.M.P.M.,
SAN JUAN COUNTY, NEW MEXICO



FLORA VISTA - N.M.

EXHIBIT A

OPERATIONS PLAN

Well Name: Carle #100
Location: 1670' FNL, 940' FEL Section 20, T-30-N, R-11-W
Latitude 36°-48-01.3' N, Longitude 108°-00-27.7' W
San Juan County, NM
Formation: Basin Fruitland Coal
Elevation: 5805' GR

Formation:	Top	Bottom	Contents
Surface	San Jose	765'	
Ojo Alamo	765'	871'	aquifer
Kirtland	871'	1845'	gas
Fruitland	1845'	2195'	gas
Pictured Cliffs	2195'	2433'	gas
Total Depth	2433'		

Logging Program: Open hole: Platform Express TD-surface

Cased hole: CBL/GR/CCL

Mudlog: none

Coring Program: none

Mud Program:

Interval	Type	Weight	Vis.	Fluid Loss
0- 120'	Spud	8.4-9.0	40-50	no control
120-2433'	Non-dispersed	8.4-9.5	30-60	no control

Casing Program (as listed, the equivalent, or better):

Hole Size	Depth Interval	Csg. Size	Wt.	Grade
9 7/8"	0' - 120'	7"	20.0#	J-55
6 1/4"	0' - 2433'	4 1/2"	10.5#	K-55

Tubing Program:

0' - 2433'	2 3/8"	4.7#	J-55
------------	--------	------	------

Float Equipment: 7" surface casing - saw tooth guide shoe. Centralizers will be run in accordance with Onshore Order #2.

4 1/2" production casing - guide shoe and self-fill float collar. Three centralizers run every other joint above shoe. Seven centralizers run every 3rd joint to the base of the Ojo Alamo @ 871'. Two turbolizing type centralizers - one below and one into the base of the Ojo Alamo @ 871'. Standard centralizers thereafter every fourth joint up to the base of the surface pipe.

Wellhead Equipment: 7" x 4 1/2" x 2 3/8" x 11" 2000 psi screw on independent wellhead.

Cementing:

7" surface casing - cement with 27 sx Class A, B Portland Type I, II cement (32 cu.ft. of slurry, bring cement to surface through 3/4" line). WOC 8 hrs. Test casing to 600 psi for 30 minutes.

4 1/2" production casing - Lead w/176 sx Premium Lite cement w/3% calcium chloride, 1/4 pps flocele, 5 pps LCM-1, 0.4% FL-52, and 0.4% SMS. Tail w/90 sx Type III cement w/1% calcium chloride, 1/4 pps flocele, and 0.2% FL-52 (499 cu.ft. of slurry, 100% excess to circulate to surface.)

Note: If open hole logs are run, cement volumes will be based
on 25% excess over caliper volumes.

BOP and tests:

Surface to TD - 11" 2000 psi (minimum double gate BOP stack (Reference Figure #1). Prior to drilling out surface casing, test rams to 600 psi/30 min.

Completion - 7 1/16" 2000 psi (minimum) double gate BOP stack (Reference Figure #2). Prior to completion operations, test rams and casing to 2000 psi/15 min.

From surface to TD - choke manifold (Reference Figure #3).

Pipe rams will be actuated to least once each day and blind rams actuated once each trip to test proper functioning. An upper kelly cock valve with handle and drill string safety valves to fit each drill string will be maintained and available on the rig floor.

BOP and tests (If a coiled tubing drilling (CTD) rig is utilized.):

Surface to TD: 7-1/16" 2000 psi (minimum) Torus annular BOP stack (Reference Figure #1b). Prior to drilling out surface casing, test annular BOP to 600psi/30 min.

Completion: 7-1/16" 2000 psi (minimum) double gate BOP stack (Reference Figure #2). Prior to completion operations, test blind rams and casing to 1500 psi for 30 minutes; all pipe rams and casing to 1500 psi for 30 minutes each. **Same as in original APD operations plan.**

From surface to TD: choke manifold (Reference Figure #3). **Same as in original APD operations plan.**

The annular BOP will be actuated to close on drill pipe (coiled tubing) at least once each day and to close on open hole once each trip to test proper functioning.

Additional information:

- * The Fruitland Coal formation will be completed and commingled.
- * Anticipated pore pressure for the Fruitland is 570 psi.
- * This gas is dedicated.
- * The north half of Section 20 is dedicated to the Fruitland Coal.

Eric J. Giles
Drilling Engineer

12/12/01
Date