

DISTRICT I  
P O Box 1980, Hobbs, NM 88241-1980

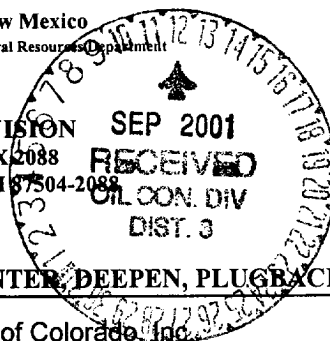
DISTRICT II  
P O Drawer DD, Artesia, NM 88211-0719

DISTRICT III  
1000 Rio Brazos Rd., Aztec, NM 87410

DISTRICT IV  
PO Box 2088, Santa Fe, NM 87504-2088

State of New Mexico  
Energy, Minerals and Natural Resources Department

OIL CONSERVATION DIVISION  
PO BOX 2088  
Santa Fe, NM 87504-2088



Form C-101

Revised February 10, 1994

Instructions on back

Submit to Appropriate District Office

State Lease - 6 Copies

Fee Lease - 3 Copies

☐ AMENDED REPORT

APPLICATION FOR PERMIT TO DRILL, RE-ENTER, DEEPEN, PLUG BACK, OR ADD A ZONE

Operator Name and Address San Juan Resources of Colorado, Inc. c/o Walsh Engineering, 7415 E. Main St., Farmington, NM 87402 (505) 327-4892		OGRID Number 020208
Property Code 99.34	Property Name Lee	API Number 30-0 45-30821
		Well No 1E

7 Surface Location

UL or lot no.	Section	Township	Range	Lot Idn	Feet from the	North/South Line	Feet from the	East/West Line	County
F	30	30N	11W		1850	North	1640	West	San Juan

8 Proposed Bottom Hole Location If Different From Surface

UL or lot no.	Section	Township	Range	Lot Idn	Feet from the	North/South Line	Feet from the	East/West Line	County
Proposed Pool 1 Blanco Mesa Verde					Proposed Pool 2 Basin Dakota				

Work Type Code N	Well Type Code G	Cable/Rotary R	Lease Type Code P	Ground Level Elevation 5709
Multiple Y	Proposed Depth 6711	Formation Mancos	Contractor	Spud Date October 15, 2001

21 Proposed Casing and Cement Program

Hole Size	Casing Size	Casing weight/feet	Setting Depth	Sacks of Cement	Estimated TOC
12-1/4"	8-5/8"	24#	320'	225	Surface
7-7/8"	5-1/2"	15.5#	6711'	400,100/525	Surface

22 Describe the proposed program. If this application is to DEEPEN or PLUG BACK give the data on the present productive zone and proposed new productive zone. Describe the blowout prevention program, if any. Use additional sheets if necessary.

San Juan Resources of Colorado, Inc. proposes to drill a vertical well with a 12-1/4" surface hole to approx. 320' with spud mud and set and cement to surface 8-5/8", 24# casing with 225 sx (266 cu.ft.) of CI "B" with 3% CaCl<sub>2</sub> and 1/4#/sk CF. A double ram, 2000 psi rated BOP will be installed and pressure tested to 1500 psi. A 7-7/8" hole will be drilled using a fresh water - polymer mud system to approx. 6711'. 5-1/2", 15.5# casing will be set and cemented to surface in two stages with the DV tool at 3500'. The 1st stage will be 400 sx (704 cu.ft.) of CI "B" 65/35 poz with 6% gel, 1% CaCl<sub>2</sub>, and 1/4#/sk CF and 4% phenoseal and 100sx (146 cu.ft.) CI "B" 50/50 poz with 0.15% dispersant, 1% CaCl<sub>2</sub>, and 1/4#/sk CF. The 2nd stage will be 525 sx (924 cu.ft.) of CI "B" 65/35 poz with 6% gel, 1% CaCl<sub>2</sub>, and 1/4#/sk CF. Cement volumes will be adjusted to be 10% greater than the open hole log volume. Open hole DIL and FDC/CNL/GR/SP logs will be run. Surveys will be run every 500'.

The N/2 of Section 30 (320 acres) is dedicated to this well.

Formation Tops: FT - 1611', PC - 1951', CH - 3521', PL - 4276', DK - 6461'.

23 I hereby certify that the information given above is true and complete to the best of my knowledge and belief.

Signature: *Paul C. Thompson*

Printed name: Paul C. Thompson, P.E.

Title: Agent

Date:  
09/10/01

Phone:  
(505) 327-4892

OIL CONSERVATION DIVISION

Approved by: *[Signature]*

Title: *[Signature]*

Approval Date: SEP 12 2001

Expiration Date: SEP 12 2002

Conditions of Approval

Attached ☐

DISTRICT I  
1625 N. French Dr., Hobbs, N.M. 88240

DISTRICT II  
811 South First, Artesia, N.M. 88210

DISTRICT III  
1000 Rio Brazos Rd., Aztec, N.M. 87410

DISTRICT IV  
2040 South Pacheco, Santa Fe, NM 87505

State of New Mexico  
Energy, Minerals & Natural Resources Department

Form C-102  
Revised August 15, 2000

Submit to Appropriate District Office  
State Lease - 4 Copies  
Fee Lease - 3 Copies

OIL CONSERVATION DIVISION

2040 South Pacheco  
Santa Fe, NM 87505

☐ AMENDED REPORT

WELL LOCATION AND ACREAGE DEDICATION PLAT

<sup>1</sup> API Number 30-045-30821	<sup>2</sup> Pool Code 72319/71599	<sup>3</sup> Pool Name Blanco Mesa Verde/Basin Dakota
<sup>4</sup> Property Code 9934	<sup>5</sup> Property Name LEE	<sup>6</sup> Well Number 1E
<sup>7</sup> GRID No. 020208	<sup>8</sup> Operator Name SAN JUAN RESOURCES OF COLORADO, INC.	<sup>9</sup> Elevation 5709'

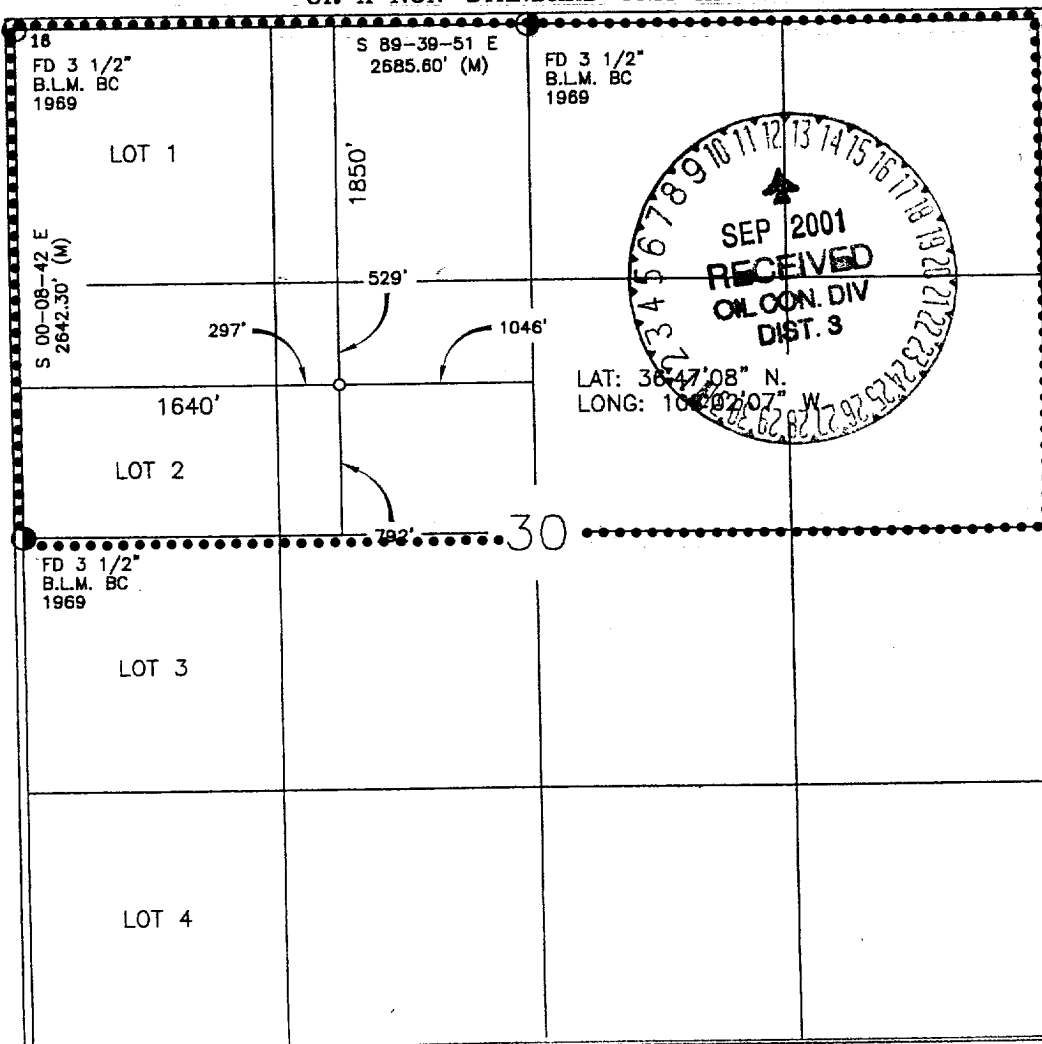
<sup>10</sup> Surface Location

UL or lot no.	Section	Township	Range	Lot Idn	Feet from the	North/South line	Feet from the	East/West line	County
F	30	30-N	11-W		1850'	NORTH	1640'	WEST	SAN JUAN

<sup>11</sup> Bottom Hole Location If Different From Surface

UL or lot no.	Section	Township	Range	Lot Idn	Feet from the	North/South line	Feet from the	East/West line	County
<sup>12</sup> Dedicated Acres 328.5			<sup>13</sup> Joint or Infill Y		<sup>14</sup> Consolidation Code		<sup>15</sup> Order No.		

NO ALLOWABLE WILL BE ASSIGNED TO THIS COMPLETION UNTIL ALL INTERESTS HAVE BEEN CONSOLIDATED  
OR A NON-STANDARD UNIT HAS BEEN APPROVED BY THE DIVISION



<sup>17</sup> OPERATOR CERTIFICATION

I hereby certify that the information contained herein is true and complete to the best of my knowledge and belief

*Paul C. Thompson*  
Signature  
Paul C. Thompson  
Printed Name  
Agent  
Title  
9/10/01  
Date

<sup>18</sup> SURVEYOR CERTIFICATION

I hereby certify that the well location shown on this plat was plotted from field notes of actual surveys made by me or under my supervision, and that the same is true and correct to the best of my belief.

6-27  
Date of Survey  
Signature and Seal of Professional Surveyor  
ROY A. RUSH  
NEW MEXICO  
8894  
Certificate Number

# SAN JUAN RESOURCES OF COLORADO, INC.

## LEE #1E

NW/4 SEC. 30, T-30-N, R-11-W, N.M.P.M.

SAN JUAN COUNTY, NEW MEXICO

1850' FNL 1640' FWL

