

UNITED STATES
DEPARTMENT OF THE INTERIOR
BUREAU OF LAND MANAGEMENT

APPLICATION FOR PERMIT TO DRILL, DEEPEN, OR PLUG BACK

11

2001 SEP 21 PM 4:05

070

DEC 2001
RECEIVED
OIL CON. DIV
DIST. 3

1a. Type of Work
DRILL

5. Lease Number
NM-02758
Unit Reporting Number

1b. Type of Well
GAS

6. Indian, All. or Tribe

2. Operator
BURLINGTON RESOURCES Oil & Gas Company

7. Unit Agreement Name

3. Address & Phone No. of Operator
PO Box 4289, Farmington, NM 87499
(505) 326-9700

8. Farm or Lease Name
Murphy D

9. Well Number
1R

4. Location of Well
1135' FSL, 1585' FEL
Latitude 36° 46.7, Longitude 107° 58.5

10. Field, Pool, Wildcat
Aztec Pict'd Cliffs

11. Sec., Twn, Rge, Mer. (NMPM)
O Sec. 27, T-30-N, R-11-W
API # 30-045-30849

14. Distance in Miles from Nearest Town
3.4 miles from Aztec, NM P.O.

12. County
San Juan

13. State
NM

15. Distance from Proposed Location to Nearest Property or Lease Line
1135'

16. Acres in Lease

17. Acres Assigned to Well
158.66 SE/4

18. Distance from Proposed Location to Nearest Well, Drig, Compl, or Applied for on this Lease
754'

19. Proposed Depth
2499'

20. Rotary or Cable Tools
Rotary

21. Elevations (DF, FT, GR, Etc.)
5955' GR

22. Approx. Date Work will Start

23. Proposed Casing and Cementing Program
See Operations Plan attached

24. Authorized by: Sandy Case
Regulatory/Compliance Supervisor

Date 9-10-01

DRILLING OPERATIONS AUTHORIZED ARE
SUBJECT TO COMPLIANCE WITH ATTACHED
"GENERAL REQUIREMENTS"

PERMIT NO.

APPROVAL DATE

APPROVED BY

TITLE

DATE

Archaeological Report to be submitted

Threatened and Endangered Species Report to be submitted

NOTE: This format is issued in lieu of U.S. BLM Form 3160-3

Title 18 U.S.C. Section 1001, makes it a crime for any person knowingly and willfully to make to any department or agency of the United States any false, fictitious or fraudulent statements or presentations as to any matter within its jurisdiction.

NM000

DISTRICT I
P.O. Box 1980, Hobbs, N.M. 88241-1980

DISTRICT II
P.O. Drawer DD, Artesia, N.M. 88211-0719

DISTRICT III
1000 Rio Brazos Rd., Aztec, N.M. 87410

DISTRICT IV
PO Box 2088, Santa Fe, NM 87504-2088

State of New Mexico
Energy, Minerals & Natural Resources Department

OIL CONSERVATION DIVISION

P.O. Box 2088
Santa Fe, NM 87504-2088

Form C-102
Revised February 21, 1994
Instructions on back
Submit to Appropriate District Office
State Lease - 4 Copies
Fee Lease - 3 Copies

☐ AMENDED REPORT

WELL LOCATION AND ACREAGE DEDICATION PLAT

¹ API Number 30-045-30849	² Pool Code 71280	³ Pool Name Aztec Pictured Cliffs
⁴ Property Code 7339	⁵ Property Name MURPHY D	⁶ Well Number 1R
⁷ GRID No. 14538	⁸ Operator Name BURLINGTON RESOURCES OIL & GAS INC.	⁹ Elevation 5955

¹⁰ Surface Location

UL or lot no.	Section	Township	Range	Lot Idn	Feet from the	North/South line	Feet from the	East/West line	County
0	27	30-N	11-W		1135	SOUTH	1585	EAST	SAN JUAN

¹¹ Bottom Hole Location If Different From Surface

UL or lot no.	Section	Township	Range	Lot Idn	Feet from the	North/South line	Feet from the	East/West line	County
¹² Dedicated Acres PC 158.66 SE			¹³ Joint or Infill		¹⁴ Consolidation Code		¹⁵ Order No.		

NO ALLOWABLE WILL BE ASSIGNED TO THIS COMPLETION UNTIL ALL INTERESTS HAVE BEEN CONSOLIDATED
OR A NON-STANDARD UNIT HAS BEEN APPROVED BY THE DIVISION

¹⁶ SEC. CORNER FD 3 1/4" BLM 1969 B.C.	S 88°04'15" E 2591.82' (M)	QTR. CORNER FD 3 1/4" BLM 1969 B.C.	S 88°02'10" E 2589.26' (M)	SEC. CORNER FD 3 1/4" BLM 1969 B.C.	¹⁷ OPERATOR CERTIFICATION I hereby certify that the information contained herein is true and complete to the best of my knowledge and belief Signature <u>Peggy Cole</u> Printed Name <u>Peggy Cole</u> Title <u>Regulatory Supervisor</u> Date <u>9-10-01</u>
LOT 4	LOT 3	LOT 2	LOT 1		
LOT 5	LOT 6	LOT 7	LOT 8		
QTR. CORNER FD 3 1/4" GLO 1916 B.C.		27		QTR. CORNER FD 3 1/4" BLM 1969 B.C.	
LOT 12	LOT 11	LOT 10	LOT 9		
				QTR. CORNER FD 3 1/4" BLM 1969 B.C.	
LOT 13	LOT 14	LOT 15	LOT 16		
SEC. CORNER FD 3 1/4" BLM 1969 B.C.	N 88°22'02" W 2586.28' (M)	QTR. CORNER FD 3 1/4" BLM 1969 B.C.	N 88°22'19" W 2596.27' (M)	SEC. CORNER FD 3 1/4" BLM 1969 B.C.	¹⁸ SURVEYOR CERTIFICATION I hereby certify that the well location shown on this plat was plotted from field notes of actual surveys made by me or under my supervision, and that the same is true and correct to the best of my belief. Date of Survey <u>6-29-01</u> Signature and Seal of Professional Surveyor <u>[Signature]</u> Certificate Number <u>8894</u>

MURPHY D #1

SE/4 SEC.27, T-30-N, R-1-W, N.M.P.M.

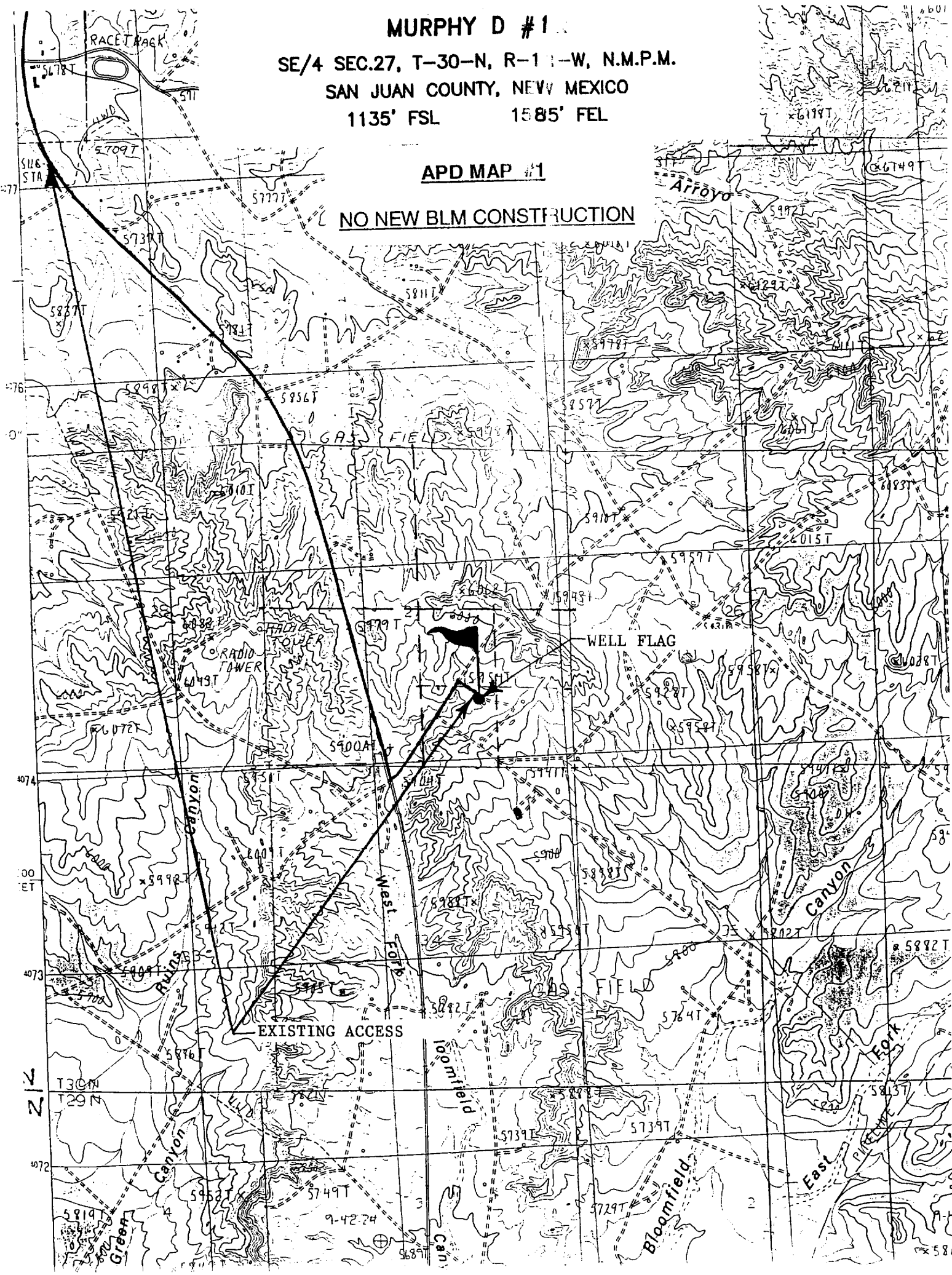
SAN JUAN COUNTY, NEW MEXICO

1135' FSL

1585' FEL

APD MAP #1

NO NEW BLM CONSTRUCTION



OPERATIONS PLAN

Well Name: Murphy D #1R
Location: 1135' FSL, 1585' FEL, Section 27, T-30-N, R-11-W
San Juan County, New Mexico
Latitude 36° 46.7', Longitude 107° 58.5'
Formation: Aztec Pictured Cliffs
Elevation: 5955' GR

Formation:	Top	Bottom	Contents
Surface	San Jose	970'	
Ojo Alamo	970'	1075'	aquifer
Kirtland	1075'	1739'	gas
Fruitland	1739'	2299'	gas
Pictured Cliffs	2299'		gas
Total Depth	2499'		

Logging Program: cased hole - CBL/GR/CCL TD to surface

Coring Program: None

Mud Program:

Interval	Type	Weight	Vis.	Fluid Loss
0 - 120'	Spud	8.4-9.0	40-50	no control
120-2499'	FW	8.4-9.0	32-45	no control

Casing Program (as listed, equivalent, or better):

Hole Size	Depth Interval	Csg. Size	Wt.	Grade
9 7/8"	0 - 120'	7"	20#	J-55
6 1/4"	0 - 2499'	2 7/8"	6.5#	J-55

Float Equipment: 7" surface casing - saw tooth guide shoe.
Centralizers will be run in accordance with Onshore Order #2.

2 7/8" production casing - float shoe on bottom. Three centralizers run every other joint above shoe. Seven centralizers run every 3rd joint to the base of the Ojo Alamo @ 1075'. Two turbolizing type centralizers - one below and one into the base of the Ojo Alamo @ 1075'. Standard centralizers thereafter every fourth joint up to the base of the surface pipe.

Wellhead Equipment: 7" x 2 7/8" 2000 psi screw on independent wellhead.

Cementing:

7" surface casing - cement with 27 sx Class A, B Portland Type I, II cement (32 cu.ft. of slurry, bring cement to surface through 3/4" line).
WOC 8 hrs. Test casing to 600 psi for 30 minutes.

2 7/8" production casing - Lead w/335 sx Premium Lite cement w/3% calcium chloride, 1/4 pps flocele, 5 pps LCM-1, 0.4% FL-52, and 0.4% SMS. Tail w/90 sx Type III cement w/1% calcium chloride, 1/4 pps flocele, and 0.2% FL-52 (840 cu.ft. of slurry, 100% excess to circulate to surface).

Note: If open hole logs are run, cement volumes will be based on 25% excess over caliper volumes.

BOP and tests:

Surface to TD - 11" 2000 psi (minimum double gate BOP stack (Reference Figure #1). Prior to drilling out surface casing, test rams to 600 psi/30 min.

Completion - 7 1/16" 2000 psi (minimum) double gate BOP stack (Reference Figure #2). Prior to completion operations, test rams and casing to 2000 psi/15 min.

From surface to TD - choke manifold (Reference Figure #3).

Pipe rams will be actuated to least once each day and blind rams actuated once each trip to test proper functioning. An upper kelly cock valve with handle and drill string safety valves to fit each drill string will be maintained and available on the rig floor.

BOP and tests (If a coiled tubing drilling (CTD) rig is utilized.):

Surface to TD: 7-1/16" 2000 psi (minimum) Torus annular BOP stack (Reference Figure #1b). Prior to drilling out surface casing, test annular BOP to 600psi/30 min.

Completion: 7-1/16" 2000 psi (minimum) double gate BOP stack (Reference Figure #2). Prior to completion operations, test blind rams and casing to 1500 psi for 30 minutes; all pipe rams and casing to 1500 psi for 30 minutes each. **Same as in original APD operations plan.**

From surface to TD: choke manifold (Reference Figure #3). **Same as in original APD operations plan.**

The annular BOP will be actuated to close on drill pipe (coiled tubing) at least once each day and to close on open hole once each trip to test proper functioning.

Additional information:

- * The Pictured Cliffs formation will be completed.
- * Anticipated pore pressure for the Pictured Cliffs is 500 psi.
- * This gas is dedicated.
- * The southeast quarter of Section 27 is dedicated to the Pictured Cliffs.

Erin J. Giles
Drilling Engineer

9/20/01
Date