

**UNITED STATES  
DEPARTMENT OF THE INTERIOR  
BUREAU OF LAND MANAGEMENT  
APPLICATION FOR PERMIT TO DRILL OR REENTER**

FORM APPROVED  
OMB NO. 1004-0136  
Expires: November 30, 2000

5. Lease Serial No. <b>SF-079010</b>	
6. If Indian, Allottee or Tribe Name <b>19641</b>	
7. If Unit or CA Agreement, Name and No. <b>Northeast Blanco Unit</b>	
8. Lease Name and Well No. <b>NEBU 59ME</b>	
9. API Well No. <b>30-CAS-30958</b>	
1a. Type of Work <input checked="" type="checkbox"/> DRILL <input type="checkbox"/> REENTER	10. Field and Pool, or Exploratory <b>Blanco Mesaverde Basin Dakota</b>
1b. Type of Well <input type="checkbox"/> Oil Well <input checked="" type="checkbox"/> Gas Well <input type="checkbox"/> Other <input type="checkbox"/> Single Zone <input checked="" type="checkbox"/> Multiple Zone	11. Sec., T., R., M., or Blk. And Survey or Area <b>Sec. 24, T 31N, R 7W</b>
2. Name of Operator <b>Devon Energy Production Company, L.P. Attn: Kim Walker</b>	12. County or Parish <b>San Juan</b>
3a. Address <b>20 North Broadway, Suite 1500, OKC, OK 73102</b>	13. State <b>NM</b>
3b. Phone No. (include area code) <b>(405) 552-4734</b>	14. DISTANCE IN MILES AND DIRECTION FROM NEAREST TOWN OR POST OFFICE* <b>Approx. 25 miles SE of Ignacio, CO</b>
4. Location of well (Report location clearly and in accordance with any State requirements. *) At surface <b>1870' FSL &amp; 670' FEL NE SE Unit I</b> At proposed prod. zone <b>1870' FSL &amp; 670' FEL NE SE</b>	15. Distance from proposed* location to nearest property or lease line, ft. (Also to nearest drlg unit line, if any) <b>670'</b>
16. No. of Acres in lease <b>2560.00</b>	17. Spacing Unit dedicated to this well <b>320.00 E/2</b>
18. Distance from proposed location* to nearest well, drilling, completed, or applied for, on this lease, ft. <b>670'</b>	19. Proposed Depth <b>8120'</b>
20. BLM/ BIA Bond No. on file <b>CO-1104</b>	21. Elevations (Show whether DF, RT, GR, etc.) <b>6470' GL</b>
22. Approximate date work will start* <b>Upon Approval</b>	23. Estimated Duration <b>20 Days</b>

*670' procedural review pursuant to 43 CFR 3165.4 and appeal pursuant to 43 CFR 3165.4*

24. Attachments

The following, completed in accordance with the requirements of Onshore Oil and Gas Order No. 1 shall be attached to this form:

- Well plat certified by a registered surveyor.
- A Drilling Plan.
- A Surface Use Plan ( if the location is on National Forest System Lands, the SUPO shall be filed with the appropriate Forest Service Office).
- Bond to cover the operations unless covered by existing bond on file(see item 20 above).
- Operator certification.
- Such other site specific information and/ or plans as may be required by the authorized officer.

25. Signature <i>Kim Walker</i>	Name (Printed/ Typed) <b>Kim Walker</b>	Date <b>12/21/01</b>
Title <b>Regulatory Technician</b>	BUREAU OF LAND MANAGEMENT SUBJECT TO COMPLIANCE WITH ATTACHED GENERAL REQUIREMENTS	
Approved By (Signature) <i>[Signature]</i>	Name (Printed/ Typed) <b>AFM</b>	Date <b>2/1/02</b>
Title <b>AFM</b>	Office <b>FFO</b>	

Application approval does not warrant or certify that the applicant holds legal or equitable title to those rights in the subject lease which would entitle the applicant operations thereon.

Conditions of approval, if any, are attached.  
Title 18 U.S.C. Section 1001 and Title 43 U.S.C. Section 1212, make it a crime for any person knowingly and willfully to make to any department or agency of the States any false, fictitious or fraudulent statements or representations as to any matter within its jurisdiction.

\* (Instructions on reverse)

✓  
M

DISTRICT II  
811 South First, Artesia, N.M. 88210

Submit to Appropriate District Office  
State Lease - 4 Copies  
Fee Lease - 3 Copies

DISTRICT III  
1000 Rio Brazos Rd., Aztec, N.M. 87410

OIL CONSERVATION DIVISION  
2040 South Pacheco  
Santa Fe, NM 87505

AMENDED REPORT

DISTRICT IV  
2040 South Pacheco, Santa Fe, NM 87505

WELL LOCATION AND ACREAGE DEDICATION PLAT

<sup>1</sup> API Number 30-045-30958		<sup>2</sup> Pool Code 72319/71599	<sup>3</sup> Pool Name Blanco Mesaverde/Basin Dakota
<sup>4</sup> Property Code 19641	<sup>5</sup> Property Name NEBU		<sup>6</sup> Well Number 59M88
<sup>7</sup> OGRID No. 6137	<sup>8</sup> Operator Name Devon Energy Production Company, L.P.		<sup>9</sup> Elevation 6470

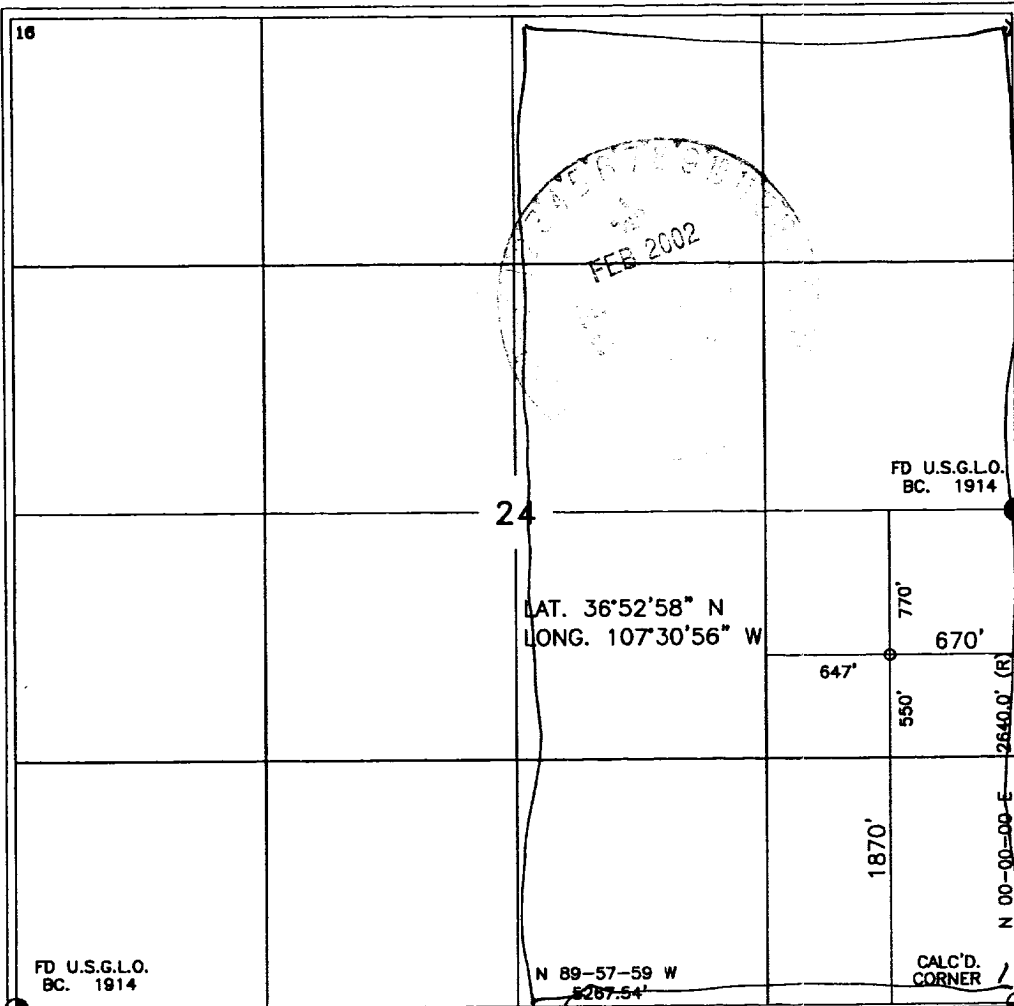
<sup>10</sup> Surface Location

UL or lot no.	Section	Township	Range	Lot Idn	Feet from the	North/South line	Feet from the	East/West line	County
1	24	31-N	7-W		1870	SOUTH	670	EAST	SAN JUAN

<sup>11</sup> Bottom Hole Location If Different From Surface

UL or lot no.	Section	Township	Range	Lot Idn	Feet from the	North/South line	Feet from the	East/West line	County
<sup>12</sup> Dedicated Acres MV - E/320 DK - E/320		<sup>13</sup> Joint or Infill		<sup>14</sup> Consolidation Code		<sup>15</sup> Order No.			

NO ALLOWABLE WILL BE ASSIGNED TO THIS COMPLETION UNTIL ALL INTERESTS HAVE BEEN CONSOLIDATED OR A NON-STANDARD UNIT HAS BEEN APPROVED BY THE DIVISION



<sup>17</sup> OPERATOR CERTIFICATION

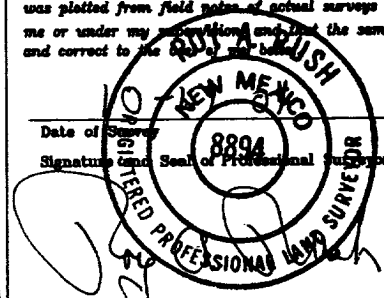
I hereby certify that the information contained herein is true and complete to the best of my knowledge and belief

*Kim Walker*  
Signature  
Kim Walker  
Printed Name  
Regulatory Technician  
Title  
12/21/01  
Date

<sup>18</sup> SURVEYOR CERTIFICATION

I hereby certify that the well location shown on this plat was plotted from field notes of actual surveys made by me or under my supervision and that the same is true and correct to the best of my belief

Date of Survey  
Signature and Seal of Professional Surveyor  
*[Signature]*  
8894  
Certificate Number



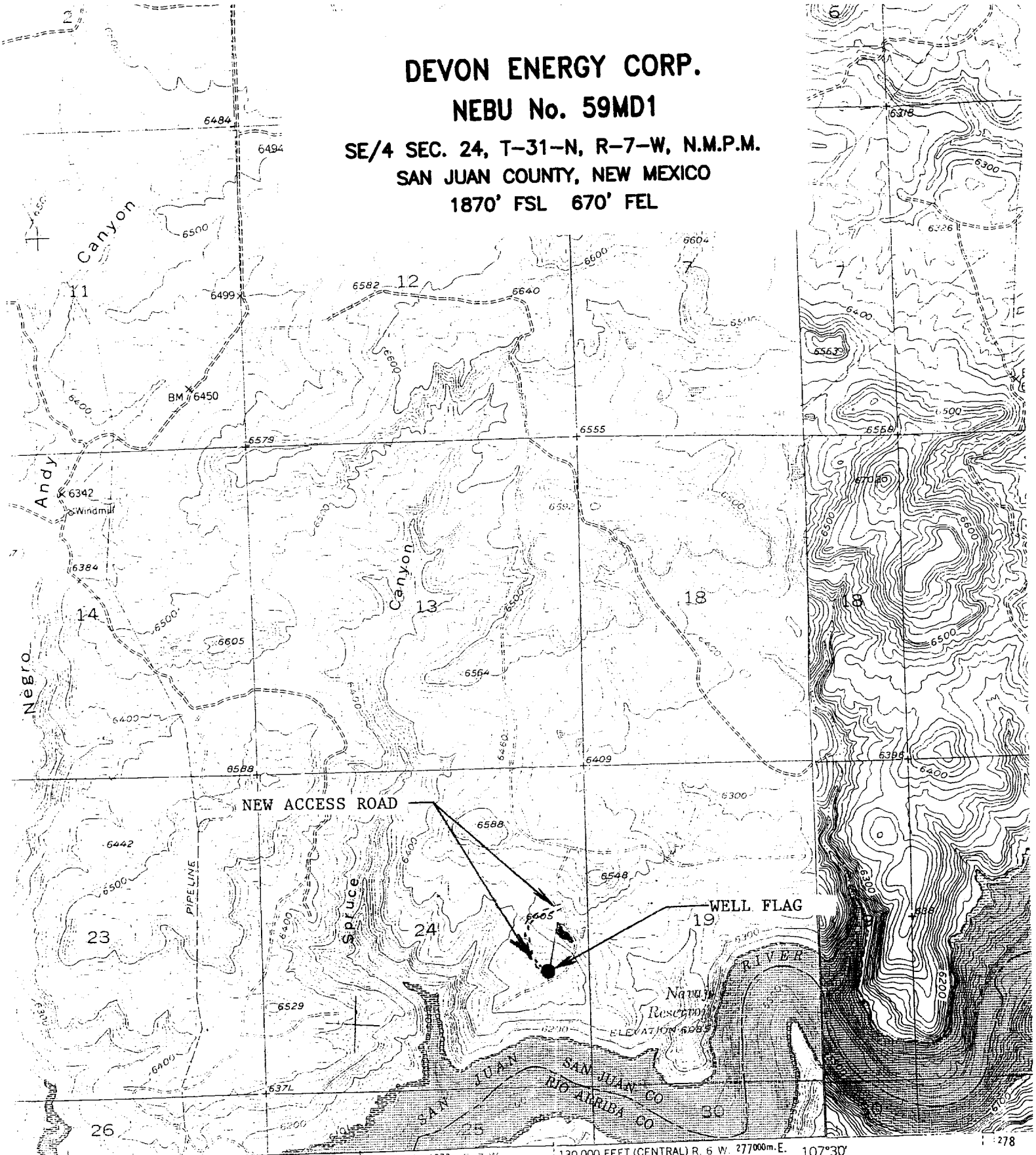
# DEVON ENERGY CORP.

## NEBU No. 59MD1

SE/4 SEC. 24, T-31-N, R-7-W, N.M.P.M.

SAN JUAN COUNTY, NEW MEXICO

1870' FSL 670' FEL



NEW ACCESS ROAD

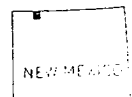
WELL FLAG

6465

ELEVATION 6465

32'30" 130 000 FEET (CENTRAL) R. 6 W. 277 000 m. E. 107°30' 1:278

1 MILE



ROAD CLASSIFICATION  
Light-duty ——— Unimproved dirt - - - - -

Mapped, edited, and published  
Control by USGS and NOS/N.O.  
Topography by photogrammetric n  
taken 1950. Field check 1954  
Polyconic projection. 1927 North  
10,000-foot grid based on New M.  
central and west zones  
1000-meter Universal Transverse

The minimum specifications for pressure control equipment that will be provided are included on the attached schematic diagram which shows the size and pressure ratings.

2000# BOP With Pipe Rams  
 2000# BOP With Blind Rams

Auxiliary equipment to be used:

- Upper kelly cock with handle available.

The manifold includes appropriate valves and adjustable chokes. The kill line will have one check valve. Ram type preventers will be pressure tested to full working pressure (utilizing a test plug) or 70% of the internal yield pressure (without a test plug) at:

- Initial installation
- Whenever any seal subject to test pressure is broken
- Following related repairs
- At 30 day intervals

Pipe and blind rams shall be activated each trip.

A BOPE pit level drill will be conducted weekly for each drilling crew.

All tests and drills will be recorded in the drilling log.

The accumulator will have sufficient capacity to close all rams and retain 200 psi above pre-charge pressure without the use of closing unit pumps.

Master controls will be at the accumulator.

### 3. CASING & CEMENTING PROGRAM:

A. The proposed casing program will be as follows:

Depth	Hole Size	Size	Grade	Weight	Thread	Condition
0-250'	12-1/4"	9-5/8"	H-40	32#	STC	New
0-3640'	8-3/4"	7"	K-55	20#	STC	New
0-TD	6-1/4"	4-1/2"	K-55	11.6 #	LTC	New

All casing strings below the conductor shall be pressure tested to 0.22 psi/ft. of casing string length or 1500 psi, whichever is greater, but not to exceed 70% minimum internal yield.

The bottom three joints of the surface casing will have one centralizer per joint and one centralizer every fourth joint thereafter.

B. The proposed cementing program will be as follows:

**Surface String:** Cement will be circulated to surface. Estimated volume (180% of theoretical value):

**Lead:** 200 sks Class "B" with additives mixed at 15.6 ppg, 1.18 ft<sup>3</sup>/sks.

**Intermediate String:** Cement stage collar at 2850'.

**First Stage:** 225 sks 50/50 "G" Poz with additives mixed at 13.5 ppg, 1.28 ft<sup>3</sup>/sks, circulated to stage collar.

**Second Stage:** 350 sks Lite cement with additives mixed at 11.5 ppg, 2.40 ft<sup>3</sup>/sks, circulated to surface.

**Production String:** TOC will be tied into the intermediate casing. *100' minimum*

**Lead:** 600 sks Class "G" cement with additives mixed at 15.8 ppg, 1.15 ft<sup>3</sup>/sks.

Actual volumes will be calculated and adjusted with caliper log prior to cementing.

#### 4. DRILLING FLUIDS PROGRAM:

Interval	Type	Weight (ppg)	Viscosity	pH	Water Loss	Remarks
0-3640'	Spud	8.4-9.0	29-70	8.0	NC	FW gel, LSND
3640-7800'	Air				NC	
7800-TD	Mud	8.5-9.0*	30-50	8.0-10.0	8-10cc @ TD	Low solids – nondispersed. * Min Wt. to control formation pressure.

NC = no control

Sufficient quantities of mud material will be maintained on site or be readily accessible for the purpose of assuring well control. SPR will be recorded on daily drilling report after mudding up. Visual mud monitoring will be conducted during operations.

#### 5. EVALUATION PROGRAM:

**Logs:** Platform Express AIT/GR/SP: Intermediate casing point to the base of the surface casing and TD to the base of the intermediate casing.

Platform Express CNL/LDT/PE: Intermediate casing point to the base of the surface casing and TD to the base of the intermediate casing.

**Cores:** None anticipated.

**DST's:** None anticipated.