

UNITED STATES
DEPARTMENT OF THE INTERIOR
BUREAU OF LAND MANAGEMENT
APPLICATION FOR PERMIT TO DRILL OR REENTER

FORM APPROVED
OMB NO. 1004-0136
Expires: November 30, 2000

1a. Type of Work ☒ DRILL ☐ REENTER

1b. Type of Well ☐ Oil Well ☒ Gas Well ☐ Other ☐ Single Zone ☒ Multiple Zone

2. Name of Operator

Devon Energy Production Company, L.P. Attn: Kim Walker

3a. Address

20 North Broadway, Suite 1500, OKC, OK 73102

3b. Phone No. (include area code)

(405) 552-4734

4. Location of well (Report location clearly and in accordance with any State requirements. *)

At surface 1570' FSL & 920' FWL NW SW Unit L

At proposed prod. zone 1570' FSL & 920' FWL NW SW

14. DISTANCE IN MILES AND DIRECTION FROM NEAREST TOWN OR POST OFFICE*

Approx. 27 miles SE of Ignacio, CO

15. Distance from proposed*

location to nearest

property or lease line, ft.

(Also to nearest drlg unit line, if any)

920'

18. Distance from proposed location*

to nearest well, drilling, completed

applied for, on this lease, ft.

21. Elevations (Show whether DF, RT, GR, etc.)

6485' GL

24. Attachments

The following, completed in accordance with the requirements of Onshore Oil and Gas Order No. 1 shall be attached to this form:

1. Well plat certified by a registered surveyor.

2. A Drilling Plan.

3. A Surface Use Plan (if the location is on National Forest System Lands, the SUPO shall be filed with the appropriate Forest Service Office).

4. Bond to cover the operations unless covered by existing bond on file (see item 20 above).

5. Operator certification.

6. Such other site specific information and/or plans as may be required by the authorized officer.

25. Signature

Kim Walker

Name (Printed/ Typed)

Kim Walker

Date

12/21/01

Title

Regulatory Technician

Approved By (Signature)

J.L.

Name (Printed/ Typed)

Date

3-13-2 sh/phone

Title

Office

Application approval does not warrant or certify that the applicant holds legal or equitable title to those rights in the subject lease which would entitle the applicant operations thereon.

Conditions of approval, if any, are attached.

Title 18 U.S.C. Section 1001 and Title 43 U.S.C. Section 1212, make it a crime for any person knowingly and willfully to make to any department or agency of the States any false, fictitious or fraudulent statements or representations as to any matter within its jurisdiction.

* (Instructions on reverse)

DISTRICT I
1625 N. French Dr., Hobbs, N.M. 88240

State of New Mexico
Energy, Minerals & Natural Resources Department

Form C-102
Revised August 15, 2000

DISTRICT II
811 South First, Artesia, N.M. 88210

DISTRICT III
1000 Rio Brazos Rd., Aztec, N.M. 87410

DISTRICT IV
2040 South Pacheco, Santa Fe, NM 87505

OIL CONSERVATION DIVISION

2040 South Pacheco
Santa Fe, NM 87505

Submit to Appropriate District Office
State Lease - 4 Copies
Fee Lease - 3 Copies

☐ AMENDED REPORT

WELL LOCATION AND ACREAGE DEDICATION PLAT

¹ API Number 30-045-30959	² Pool Code 72319/71599	³ Pool Name Blanco Mesaverde/Basin Dakota
⁴ Property Code 19641	⁵ Property Name NEBU	⁶ Well Number 313MD1
⁷ GRID No. 6137	⁸ Operator Name Devon Energy Production Company, L.P.	⁹ Elevation 6485

¹⁰ Surface Location

UL or lot no.	Section	Township	Range	Lot Idn	Feet from the	North/South line	Feet from the	East/West line	County
L	11	31-N	7-W		1570	SOUTH	920	WEST	SAN JUAN

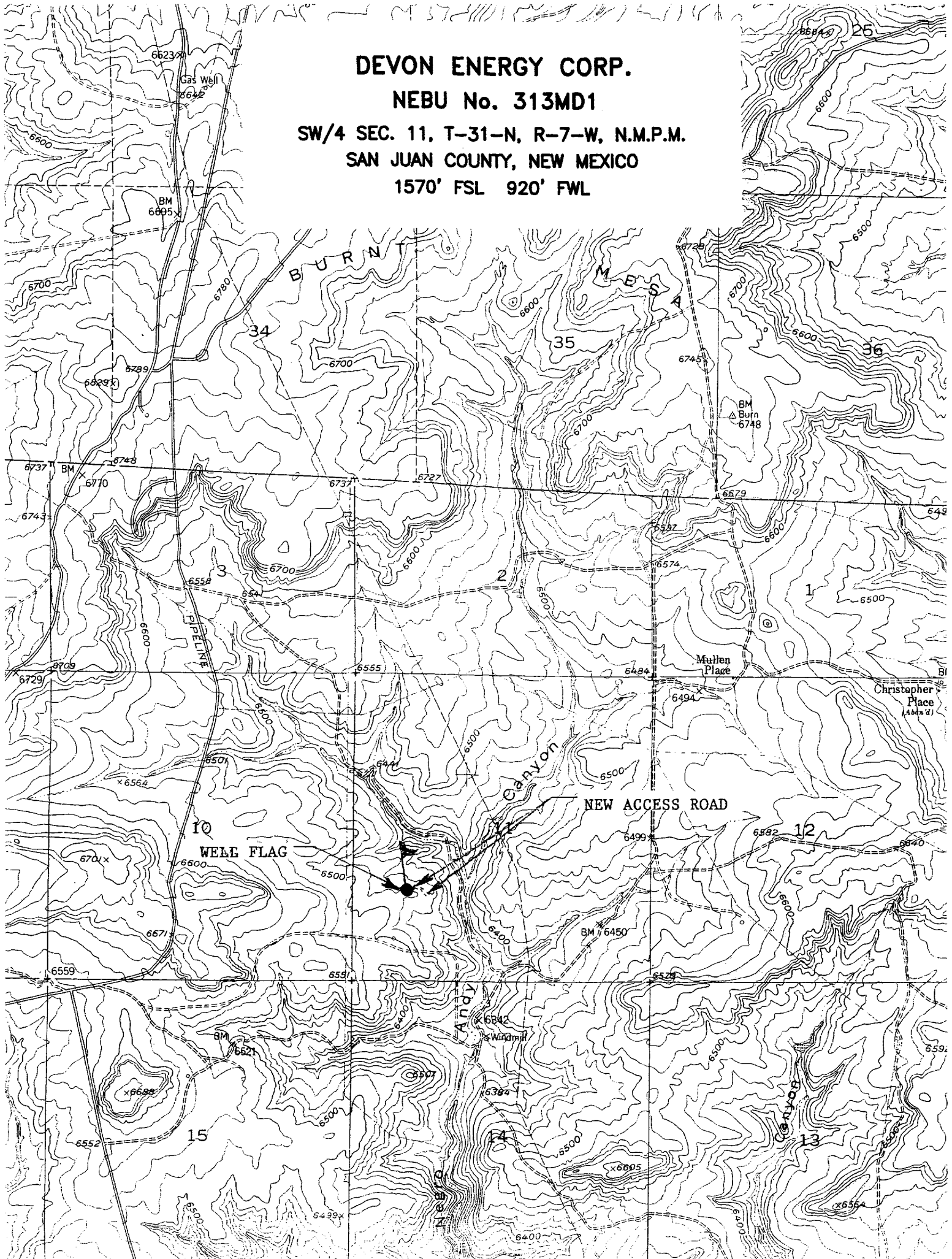
¹¹ Bottom Hole Location If Different From Surface

UL or lot no.	Section	Township	Range	Lot Idn	Feet from the	North/South line	Feet from the	East/West line	County
¹² Dedicated Acres MV - W/320 DK - w/320			¹³ Joint or Infill		¹⁴ Consolidation Code		¹⁵ Order No.		

NO ALLOWABLE WILL BE ASSIGNED TO THIS COMPLETION UNTIL ALL INTERESTS HAVE BEEN CONSOLIDATED
OR A NON-STANDARD UNIT HAS BEEN APPROVED BY THE DIVISION

¹⁶				¹⁷ OPERATOR CERTIFICATION <i>I hereby certify that the information contained herein is true and complete to the best of my knowledge and belief.</i> <u>Kim Walker</u> Signature Kim Walker Printed Name Regulatory Technician Title 12/21/01 Date					
LAT. 36°54'40" N LONG. 107°32'46" W				¹⁸ SURVEYOR CERTIFICATION <i>I hereby certify that the well location shown on this plat was plotted from field notes of actual surveys made by me or under my supervision. And that the same is true and correct to the best of my belief.</i> 11-01 Date of Survey Signature and Seal of Professional Surveyor 8894 8894 Certificate Number					
FD U.S.G.L.O. BC. (WC) 1914	2843.96'	920'	1074'	394'	248'	1570'	N 0-08-57 W	N 89-52-50 E 2828.11'	FD U.S.G.L.O. BC. 1914

1570' FSL 920' FWL



UNITED STATES
DEPARTMENT OF THE INTERIOR
BUREAU OF LAND MANAGEMENT

FORM APPROVED
OMB No. 1004-0135
Expires: July 31, 1996

SUNDRY NOTICES AND REPORTS ON WELLS

Do not use this form for proposals to drill or to re-enter an abandoned well. Use Form 3160-3 (APD) for such proposals.

SUBMIT IN TRIPLICATE- Other Instructions on the reverse side

5. Lease Serial No.

NM-03358

6. If Indian, Allottee, or Tribe Name

7. If Unit or CA. Agreement Designation

Northeast Blanco Unit

8. Well Name and No.

NEBU 313MD1

9. API Well No.

10. Field and Pool, or Exploratory Area

Blanco Mesaverde Basin Dakota

11. County or Parish, State

San Juan NM

1. Type of Well

☐ Oil Well

☒ Gas Well

☐ Other

2. Name of Operator

Devon Energy Production Company, L.P. Attn: Kim Walker

3a. Address

3b. Phone No. (include area code)

20 North Broadway, Suite 1500, OKC, OK 73102 (405) 235-3611 x 4734

4. Location of Well (Footage, Sec., T., R., M., or Survey Description)

1570' FSL & 920' FWL NW 1/4, SW 1/4, Sec. 11, T 31N R. 7W

Latitude

36.544

Longitude

107.3246

12. CHECK APPROPRIATE BOX(S) TO INDICATE NATURE OF NOTICE, REPORT, OR OTHER DATA

TYPE OF SUBMISSION

TYPE OF ACTION

☐ Notice of Intent

☐ Acidize

☐ Deepen

☐ Production (Start/ Resume)

☐ Water Shut-off

☒ Subsequent Report

☐ Altering Casing

☐ Fracture Treat

☐ Reclamation

☐ Well Integrity

☐ Casing Repair

☐ New Construction

☐ Recomplete

☒ Other **Amend APD**

☐ Change Plans

☐ Plug and abandon

☐ Temporarily Abandon

☐ Final Abandonment Notice

☐ Convert to Injection

☐ Plug back

☐ Water Disposal

13. Describe Proposed or Completed Operation (clearly state all pertinent details including estimated starting date of any proposed work and approximate duration thereof.

If the proposal is to deepen directionally or recompleat horizontally, give subsurface locations and measured and true vertical depths or pertinent markers and sands.

Attach the Bond under which the work will performed or provide the Bond No. on file with the BLM/ BIA. Required subsequent reports shall be filed within 30 days

following completion of the involved operations. If the operation results in a multiple completion or recompleat in anew interval, a Form 3160-4 shall be filed once

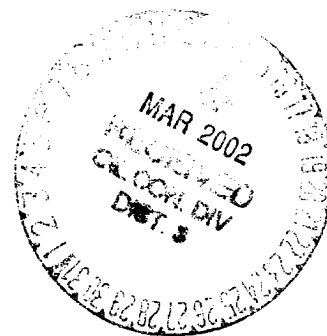
testing has been completed. Final Abandonment Notice shall be filed only after all requirements, including reclamatantion, have been completed, and the operator has

determined that the site is ready for final inspection.)

Attached please find the corrected Drilling Plan with changes highlighted.

Please note the Proposed Depth changed from 8010' to 8110'

Please note the Elevation changed from 6485' to 6497'



14. I hereby certify that the foregoing is true and correct.
Name (Printed/ Typed)

Kim Walker

Title

Regulatory Technician

Signature

Kim Walker

Date

1/8/02

THIS SPACE FOR FEDERAL OR STATE OFFICE USE

Approved by

Title

Date

3/13/02

Conditions of approval, if any are attached. Approval of this notice does not warrant or certify that the applicant holds legal or equitable title to those rights in the subject lease which would entitle the applicant to conduct operations thereon.

Office

Title 18 U.S.C. Section 1001, makes it a crime for any person knowingly and willfully to make any department or agency of the United States any false, fictitious or fraudulent statements or representations as to any matter within its jurisdiction.

(Instructions on reverse)

NMOCD

**NEBU 313MD1
Unit L-11-31N-7W
San Juan Co., NM**

DRILLING PLAN

1. ESTIMATED TOPS OF IMPORTANT GEOLOGIC MARKERS & ANTICIPATED WATER, OIL, GAS OR MINERAL FORMATIONS:

Formation	Depth (ft)	Hydrocarbon/Water Bearing Zones
San Jose	Surface	
Ojo Alamo	2325'	Aquifer
Kirtland	2440'	
Fruitland	3000'	Gas
Pictured Cliffs	3310'	Gas
Lewis	3550'	Gas
Intermediate TD	3650'	
Mesaverde	4225'	Gas
Chacra	4630'	
Massive Cliff House	5040'	Gas
Menefee	5320'	Gas
Massive Point Lookout	5640'	Gas
Mancos	5950'	
Gallup	6620'	Gas
Greenhorn	7745'	Gas
Graneros	7790'	
Dakota	7860'	Gas
TD	8110'	

All shows of fresh water and minerals will be adequately protected and reported.

2. PRESSURE CONTROL EQUIPMENT:

All well control equipment shall be in accordance with Onshore Order #2 for 2M systems.

The minimum specifications for pressure control equipment that will be provided are included on the attached schematic diagram which shows the size and pressure ratings.

2000# BOP With Pipe Rams
2000# BOP With Blind Rams

Auxiliary equipment to be used:

- Upper kelly cock with handle available.

The manifold includes appropriate valves and adjustable chokes. The kill line will have one check valve. Ram type preventers will be pressure tested to full working pressure (utilizing a test plug) or 70% of the internal yield pressure (without a test plug) at:

- Initial installation
- Whenever any seal subject to test pressure is broken
- Following related repairs
- At 30 day intervals

Pipe and blind rams shall be activated each trip.

A BOPE pit level drill will be conducted weekly for each drilling crew.

All tests and drills will be recorded in the drilling log.

The accumulator will have sufficient capacity to close all rams and retain 200 psi above pre-charge pressure without the use of closing unit pumps.

Master controls will be at the accumulator.

3. CASING & CEMENTING PROGRAM:

A. The proposed casing program will be as follows:

Depth	Hole Size	Size	Grade	Weight	Thread	Condition
0-250'	12-1/4"	9-5/8"	H-40	32#	STC	New
0-3650'	8-3/4"	7"	K-55	20#	STC	New
0-TD	6-1/4"	4-1/2"	K-55	11.6 #	LTC	New

All casing strings below the conductor shall be pressure tested to 0.22 psi/ft. of casing string length or 1500 psi, whichever is greater, but not to exceed 70% minimum internal yield.

The bottom three joints of the surface casing will have one centralizer per joint and one centralizer every fourth joint thereafter.

B. The proposed cementing program will be as follows:

Surface String: Cement will be circulated to surface. Estimated volume (180% of theoretical value):

Lead: 200 sks Class "B" with additives mixed at 15.6 ppg, 1.18 ft³/sks.

Intermediate String: Cement stage collar at 2900'.

First Stage: 225 sks 50/50 "G" Poz with additives mixed at 13.5 ppg, 1.28 ft³/sks, circulated to stage collar.

Second Stage: 350 sks Lite cement with additives mixed at 11.5 ppg, 2.40 ft³/sks, circulated to surface.

Production String: TOC will be tied into the intermediate casing.

Lead: 600 sks Class "G" cement with additives mixed at 15.8 ppg, 1.15 ft³/sks.

Actual volumes will be calculated and adjusted with caliper log prior to cementing.

4. DRILLING FLUIDS PROGRAM:

Interval	Type	Weight (ppg)	Viscosity	pH	Water Loss	Remarks
0-3650'	Spud	8.4-9.0	29-70	8.0	NC	FW gel, LSND
3650-7800'	Air				NC	
7800-TD	Mud	8.5-9.0*	30-50	8.0-10.0	8-10cc @ TD	Low solids – nondispersed. * Min Wt. to control formation pressure.

NC = no control

Sufficient quantities of mud material will be maintained on site or be readily accessible for the purpose of assuring well control. SPR will be recorded on daily drilling report after mudding up. Visual mud monitoring will be conducted during operations.

5. EVALUATION PROGRAM:

Logs: Platform Express AIT/GR/SP: Intermediate casing point to the base of the surface casing and TD to the base of the intermediate casing.

Platform Express CNL/LDT/PE: Intermediate casing point to the base of the surface casing and TD to the base of the intermediate casing.

Cores: None anticipated.

DST's: None anticipated.