

UNITED STATES
DEPARTMENT OF THE INTERIOR
BUREAU OF LAND MANAGEMENT

FORM APPROVED
OMB No. 1004-0137
Expires: November 30, 2000

WELL COMPLETION OR RECOMPLETION REPORT AND LOG

5. Lease Serial No.
NMSF079047

1a. Type of Well ☐ Oil Well ☒ Gas Well ☐ Dry ☐ Other
b. Type of Completion ☒ New Well ☐ Work Over ☐ Deepen ☐ Plug Back ☐ Diff. Resvr.
Other _____

6. If Indian, Allottee or Tribe Name

7. Unit or CA Agreement Name and No.
NMNM78424D

2. Name of Operator
PHILLIPS PETROLEUM COMPANY

Contact: PATSY CLUGSTON
E-Mail: pclugs@ppco.com

8. Lease Name and Well No.
SJ 32-8 23M

3. Address 5525 HIGHWAY 64 NBU 3004
FARMINGTON, NM 87401

3a. Phone No. (include area code)
Ph: 505.599.3454

9. API Well No.
30-045-30967-00-X1

4. Location of Well (Report location clearly and in accordance with Federal requirements)*

At surface NWNW 1261FNL 1224FWL

At top prod interval reported below

At total depth

10. Field and Pool, or Exploratory
BASIN DAKOTA

11. Sec., T., R., M., or Block and Survey
or Area Sec 14 T31N R8W Mer NMP

12. County or Parish
SAN JUAN

13. State
NM

14. Date Spudded
05/02/2002

15. Date T.D. Reached
05/12/2002

16. Date Completed
☐ D & A ☒ Ready to Prod.
06/21/2002

17. Elevations (DF, KB, RT, GL)*
6662 GL

18. Total Depth: MD 8255
TVD 8255

19. Plug Back T.D.: MD 8236
TVD 8236

20. Depth Bridge Plug Set: MD
TVD

21. Type Electric & Other Mechanical Logs Run (Submit copy of each)
GR CCL CBL&GSL

22. Was well cored? ☒ No ☐ Yes (Submit analysis)
Was DST run? ☒ No ☐ Yes (Submit analysis)
Directional Survey? ☐ No ☒ Yes (Submit analysis)

23. Casing and Liner Record (Report all strings set in well)

Hole Size	Size/Grade	Wt. (#/ft.)	Top (MD)	Bottom (MD)	Stage Cementer Depth	No. of Sks. & Type of Cement	Slurry Vol. (BBL)	Cement Top*	Amount Pulled
12.250	9.675 H-40	32.0	0	355		200	52	0	15
8.750	7.000 J-55	20.0	0	3920	0	250	270	0	25
6.250	4.500 I-80	12.0	0	8255	0	370	158	2720	

24. Tubing Record

Size	Depth Set (MD)	Packer Depth (MD)	Size	Depth Set (MD)	Packer Depth (MD)	Size	Depth Set (MD)	Packer Depth (MD)
2.375	8179							

25. Producing Intervals

Formation	Top	Bottom	Perforated Interval	Size	No. Holes	Perf. Status
A) DAKOTA	8117	8198	8117 TO 8198	0.340	20	OPEN 6 7 8 9
B)						
C)						
D)						

27. Acid, Fracture, Treatment, Cement Squeeze, Etc.

Depth Interval	Amount and Type of Material
8117 TO 8198	1500 GAL 7.5% HCL
8117 TO 8198	12,500 GAL X-LINK 60 QUALITY FOAM W/2% KCL & 93.50
8117 TO 8198	AND 745,700 SCF N2

28. Production - Interval A

Date First Produced	Test Date	Hours Tested	Test Production	Oil BBL	Gas MCF	Water BBL	Oil Gravity Corr. API	Gas Gravity	Production Method
06/25/2002	06/25/2002	24	→	0.0	530.0	0.0			FLOWS FROM WELL
Choke Size	Tbg. Press. Flwg.	Csg. Press.	24 Hr. Rate	Oil BBL	Gas MCF	Water BBL	Gas:Oil Ratio	Well Status	
1.375	SI 1900	2200.0	→		530			PGW	

28a. Production - Interval B

Date First Produced	Test Date	Hours Tested	Test Production	Oil BBL	Gas MCF	Water BBL	Oil Gravity Corr. API	Gas Gravity	Production Method
			→						
Choke Size	Tbg. Press. Flwg.	Csg. Press.	24 Hr. Rate	Oil BBL	Gas MCF	Water BBL	Gas:Oil Ratio	Well Status	
	SI		→						

ACCEPTED FOR RECORD

JUL 02 2002

FARMINGTON FIELD OFFICE
BY

(See Instructions and spaces for additional data on reverse side)

ELECTRONIC SUBMISSION #12434 VERIFIED BY THE BLM WELL INFORMATION SYSTEM

**** REVISED ** REVISED ** REVISED ** REVISED ** REVISED ** REVISED ****

NMOCD

28b. Production - Interval C

Date First Produced	Test Date	Hours Tested	Test Production →	Oil BBL	Gas MCF	Water BBL	Oil Gravity Corr. API	Gas Gravity	Production Method
Choke Size	Tbg. Press. Flwg. SI	Csg. Press.	24 Hr. Rate →	Oil BBL	Gas MCF	Water BBL	Gas:Oil Ratio	Well Status	

28c. Production - Interval D

Date First Produced	Test Date	Hours Tested	Test Production →	Oil BBL	Gas MCF	Water BBL	Oil Gravity Corr. API	Gas Gravity	Production Method
Choke Size	Tbg. Press. Flwg. SI	Csg. Press.	24 Hr. Rate →	Oil BBL	Gas MCF	Water BBL	Gas:Oil Ratio	Well Status	

29. Disposition of Gas(Sold, used for fuel, vented, etc.)
SOLD

30. Summary of Porous Zones (Include Aquifers):

Show all important zones of porosity and contents thereof: Cored intervals and all drill-stem tests, including depth interval tested, cushion used, time tool open, flowing and shut-in pressures and recoveries.

31. Formation (Log) Markers

Formation	Top	Bottom	Descriptions, Contents, etc.	Name	Top
					Meas. Depth
SAN JOSE	0	978		NACIMIENTO	1338
NACIMIENTO	978	2340		OJO ALAMO	2363
OJO ALAMO	2340	2470		KIRTLAND	2459
				FRUITLAND	3260
				PICTURED CLIFFS	3543
				LEWIS SHALE	3815
				CLIFF HOUSE	5556
				MENEFEE	5597
				POINT LOOKOUT	5844
				MANCOS	6174
				GALLUP	6854
				GREENHORN	7907
				DAKOTA	7968

32. Additional remarks (include plugging procedure):

Attached is a copy of the Direction Survey Report.

This will be a MV/DK commingle well. Plans are to flow the DK until pressures stabilize and then we will return and add the MV interval, flow test the MV and then DHC per Order #11363. The individual DHC application with the DK forecast will be submitted before the well is commingled.

33. Circle enclosed attachments:

- | | | | |
|-------------------------------------------------------|--------------------|---------------|-----------------------|
| 1. Electrical/Mechanical Logs (1 full set req'd.) | 2. Geologic Report | 3. DST Report | 4. Directional Survey |
| 5. Sundry Notice for plugging and cement verification | 6. Core Analysis | 7 Other: | |

34. I hereby certify that the foregoing and attached information is complete and correct as determined from all available records (see attached instructions):

Electronic Submission #12434 Verified by the BLM Well Information System.
For PHILLIPS PETROLEUM COMPANY, sent to the Farmington
Committed to AFMSS for processing by Adrienne Garcia on 07/02/2002 (02AXG0302SE)

Name (please print) PATSY CLUGSTONTitle AUTHORIZED REPRESENTATIVE

Signature _____ (Electronic Submission)

Date 07/01/2002

Title 18 U.S.C. Section 1001 and Title 43 U.S.C. Section 1212, make it a crime for any person knowingly and willfully to make to any department or agency of the United States any false, fictitious or fraudulent statements or representations as to any matter within its jurisdiction.

**** REVISED ** REVISED ** REVISED ** REVISED ** REVISED ** REVISED ** REVISED ** REVISED ****

District I
191 Box 1980, Hobbs, NM 88241-1980
District II
811 South First, Artesia, NM 88210
District III
1000 Rio Brazos Rd., Aztec, NM 87410
District IV
2040 South Pacheco, Santa Fe, NM 87505

State of New Mexico
Energy, Minerals & Natural Resources Department

OIL CONSERVATION DIVISION
2040 South Pacheco
Santa Fe, NM 87505

Form C-
Revised October 18, 1
Instructions on b
Submit to Appropriate District Of
State Lease - 4 Co
Fee Lease - 3 Co

☒ AMENDED REPC

WELL LOCATION AND ACREAGE DEDICATION PLAT

1 API Number		2 Pool Code		3 Pool Name	
		72319		Blanco Mesaverde	
4 Property Code		5 Property Name			6 Well Number
009261		SAN JUAN 32-8 UNIT			23M
7 OGRID No.		8 Operator Name			9 Elevation
017654		PHILLIPS PETROLEUM COMPANY			6662'

10 Surface Location

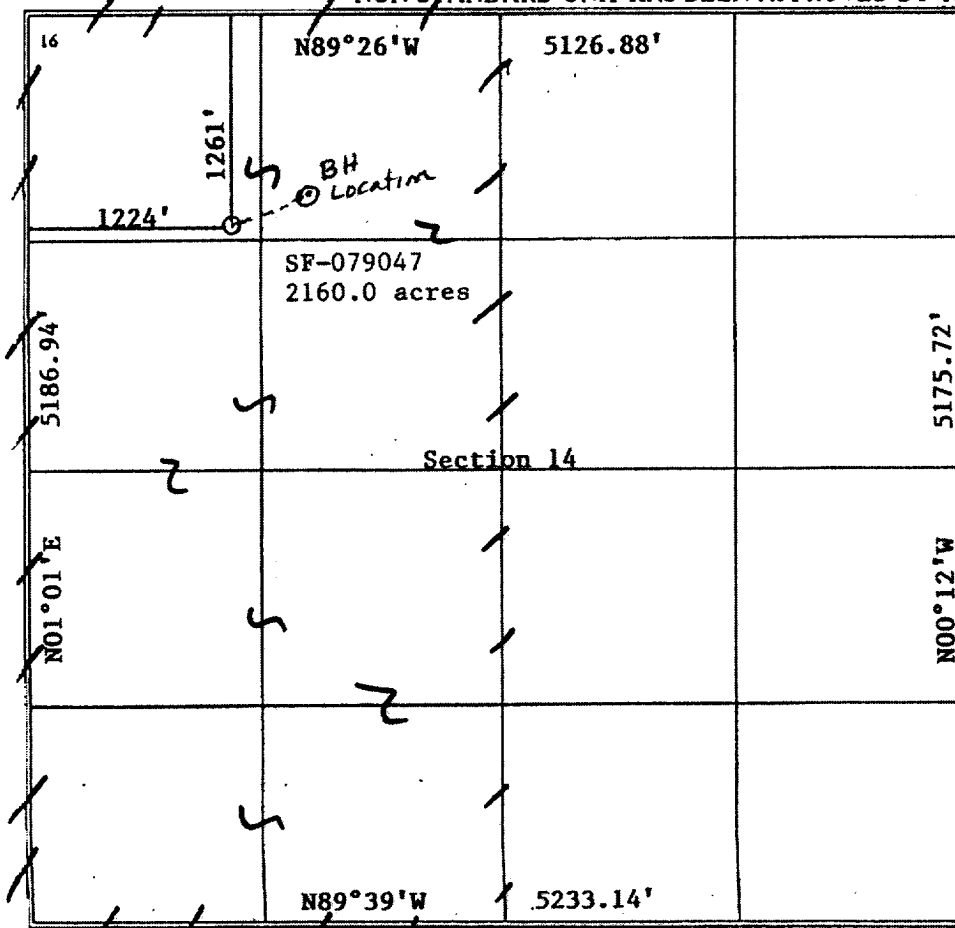
UL or lot no.	Section	Township	Range	Lot Idn	Feet from the	North/South line	Feet from the	East/West line	County
D	14	31N	8W		1261'	NORTH	1224'	WEST	SAN JUAN

11 Bottom Hole Location If Different From Surface

UL or lot no.	Section	Township	Range	Lot Idn	Feet from the	North/South line	Feet from the	East/West line	County
C	14	31N	8W		996	North	1496	West	San Juan

12 Dedicated Acres	13 Joint or Infill	14 Consolidation Code	15 Order No.
320.0 W/2	I	U	

NO ALLOWABLE WILL BE ASSIGNED TO THIS COMPLETION UNTIL ALL INTERESTS HAVE BEEN CONSOLIDATED OR
NON-STANDARD UNIT HAS BEEN APPROVED BY THE DIVISION



17 OPERATOR CERTIFICAT
I hereby certify that the information contained herein is
true and complete to the best of my knowledge and beli.

Signature
Patsy Clugston
Printed Name
Sr. Regulatory/Proration Cl
Title
10/25/01
Date

18 SURVEYOR CERTIFICAT
I hereby certify that the well location shown on this plat
was plotted from field notes of actual surveys made by
or under my supervision, and that the same is true and
correct to the best of my knowledge and belief.

Date of Survey
10/12/01
Signature and Seal of Registered Professional Surveyor

Certificate Number

District I
190 Box 1980, Hobbs, NM 88241-1980
District II
111 South First, Artesia, NM 88210
District III
1000 Rio Brazos Rd., Aztec, NM 87410
District IV
2040 South Pacheco, Santa Fe, NM 87505

State of New Mexico
Energy, Minerals & Natural Resources Department

OIL CONSERVATION DIVISION
2040 South Pacheco
Santa Fe, NM 87505

Form C
Revised October 18, 1
Instructions on l
Submit to Appropriate District O
State Lease - 4 Co
Fee Lease - 3 Co

☒ AMENDED REPORT

WELL LOCATION AND ACREAGE DEDICATION PLAT

¹ API Number	² Pool Code 71599	³ Pool Name Basin Dakota
⁴ Property Code 009261	⁵ Property Name SAN JUAN 32-8 UNIT	⁶ Well Number 23M
⁷ OGRID No. 017654	⁸ Operator Name PHILLIPS PETROLEUM COMPANY	⁹ Elevation 6662'

¹⁰ Surface Location

UL or lot no.	Section	Township	Range	Lot Idn	Feet from the	North/South line	Feet from the	East/West line	County
D	14	31N	8W		1261'	NORTH	1224'	WEST	SAN JUAN

¹¹ Bottom Hole Location If Different From Surface

UL or lot no.	Section	Township	Range	Lot Idn	Feet from the	North/South line	Feet from the	East/West line	County
C	14	31N	8W		996	North	1496	West	San Juan

¹² Dedicated Acres 320.0 W/2	¹³ Joint or Infill J	¹⁴ Consolidation Code U	¹⁵ Order No.
--------------------------------------------	------------------------------------	---------------------------------------	-------------------------

NO ALLOWABLE WILL BE ASSIGNED TO THIS COMPLETION UNTIL ALL INTERESTS HAVE BEEN CONSOLIDATED OR
NON-STANDARD UNIT HAS BEEN APPROVED BY THE DIVISION

¹⁶ N89°26'W 5126.88' 1224' 1261' BH Location SF-079047 2160.0 acres Section 14 5186.94' N01°01'E N89°39'W 5233.14'	¹⁷ OPERATOR CERTIFICATION I hereby certify that the information contained herein is true and complete to the best of my knowledge and belief. Signature Patsy Clugston Printed Name Sr. Regulatory/Proration Clerk Title October 25, 2001 Date ¹⁸ SURVEYOR CERTIFICATION I hereby certify that the well location shown on this plat was plotted from field notes of actual surveys made by or under my supervision, and that the same is true and correct to the best of my knowledge and belief. Date of Survey 12/01 Signature and Seal of Registered Professional Surveyor Certificate Number
-------------------------------------------------------------------------------------------------------------------------------------------------------------------	------------------------------------------------------------------------------------------------------------------------------------------------------------------------------------------------------------------------------------------------------------------------------------------------------------------------------------------------------------------------------------------------------------------------------------------------------------------------------------------------------------------------------------------------------------------------------------------------------------------------------------------------------------------------------