

DISTRICT I
P.O. Box 1980, Hobbs, NM 88241-1980

State of New Mexico
Energy, Minerals and Natural Resources Department

Form C-101
Revised February 10, 1994

Instructions on back

Submit to Appropriate District Office

State Lease - 6 Copies

Fee Lease - 5 Copies

DISTRICT II
P.O. Drawer DD, Artesia, NM 88211-0719

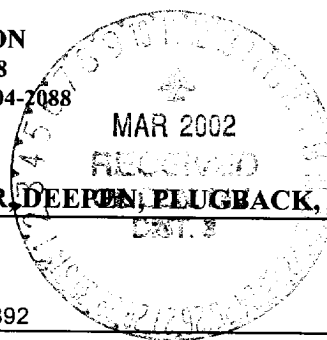
DISTRICT III
1000 Rio Brazos Rd., Aztec, NM 87410

DISTRICT IV
PO Box 2088, Santa Fe, NM 87504-2088

OIL CONSERVATION DIVISION

PO BOX 2088

Santa Fe, NM 87504-2088



☐ AMENDED REPORT

APPLICATION FOR PERMIT TO DRILL, RE-ENTER, DEEPEN, PLUGBACK, OR ADD A ZONE

Operator Name and Address Cordillera Energy, Inc.		OGRID Number 173252
c/o Walsh Engineering, 7415 E. Main St., Farmington, NM 87402 (505) 327-4892		API Number 30 - 0 45-31014
Property Code 24025	Property Name Clayton	Well No 2C

7 Surface Location

UL or lot no. J	Section 2	Township 30N	Range 12W	Lot Idn	Feet from the 1995	North/South Line South	Feet from the 1975	East/West Line East	County San Juan
--------------------	--------------	-----------------	--------------	---------	-----------------------	---------------------------	-----------------------	------------------------	--------------------

8 Proposed Bottom Hole Location If Different From Surface

UL or lot no.	Section	Township	Range	Lot Idn	Feet from the	North/South Line	Feet from the	East/West Line	County
Proposed Pool 1 Blanco Mesa Verde					Proposed Pool 2 Basin Dakota				

Work Type Code N	Well Type Code G	Cable/Rotary R	Lease Type Code P	Ground Level Elevation 5743'
Multiple Y	Proposed Depth 6745'	Formation Dakota	Contractor	Spud Date April 1, 2002

21 Proposed Casing and Cement Program

Hole Size	Casing Size	Casing weight/feet	Setting Depth	Sacks of Cement	Estimated TOC
12-1/4"	9-5/8"	36#	200'	140	Surface
8-3/4"	7"	20#	4000'	510 + 100	Surface
6-1/4"	4-1/2"	11.6#	6745'	155 + 100	3900'

22 Describe the proposed program. If this application is to DEEPEN or PLUG BACK give the data on the present productive zone and proposed new productive zone. Describe the blowout prevention program, if any. Use additional sheets if necessary.

Cordillera Energy, Inc. proposes to drill a vertical well with a 12-1/4" surface hole to approx. 250' with spud mud and set and cement to surface 9-5/8", 36# casing with 140 sx (165 cu.ft.) of CI "B" with 2% CaCl2 and 1/4#/sk CF. A double ram, 2000 psi rated BOP will be installed and pressure tested to 1500 psi. A 8-3/4" hole will be drilled using a fresh water - polymer mud system to approx. 4000'. 7", 20#, J-55 casing will be set and cemented to surface. Lead with 510 sx (1066 cu.ft) of Type III 65/35 poz with 8% gel, 1% CaCl2, 1/4#/sk. Celloflake. Tail with 100 sx (139 cu.ft.) of Type III with 1% CaCl2, 1/4#/sk. Celloflake. (100% excess to circulate cement to surface). WOC for 12 hrs. and pressure test the BOP and casing to 1500 psi. A 6-1/4" hole will be drilled with air to 6745'. Open hole DIL and FDC/CNL/GR logs will be run. Surveys will be run every 500'. 4-1/2", 11.6#, N-80 casing will set and cemented to 3900' using. 155 sx (307 cu.ft.) of Premium Lite HS with 0.65% FL-52, 0.32% CD-32, 1/4 #/sk celloflake, and 4% phenoseal and 100 sx (139 cu.ft.) of Premium Lite HS with 0.65% FL-52, and 0.32% CD-32. (70% excess to circulate the liner top). The S/2 of Section 2 (320 acres) is dedicated to this well. Formation Tops: OA - 495', PC - 2070', CH - 3665', PL - 4410', Gal - 5680', DK - 6745'.

23 I hereby certify that the information given above is true and complete to the best of my knowledge and belief.

Signature: Paul C. Thompson
Printed name: Paul C. Thompson, P.E.

Title: Agent

Date: 03/08/02 Phone: (505) 327-4892

OIL CONSERVATION DIVISION

Approved by: [Signature]
Title: DEPUTY OIL & GAS INSPECTOR, E&T

Approval Date: MAR 11 2002 Expiration Date: MAR 11 2003

Conditions of Approval
Attached ☐

District I
PO Box 1980, Hobbs, NM 88241-1980

State of New Mexico
Energy, Minerals & Natural Resources Department

Form C-102
Revised February 21, 1994

District II
PO Drawer DD, Artesia, NM 88211-0719

OIL CONSERVATION DIVISION
PO Box 2088
Santa Fe, NM 87504-2088

Submit to Appropriate District Office
State Lease - 4 Copies
Fee Lease - 3 Copies

District III
1000 Rio Brazos Rd., Aztec, NM 87410

District IV
PO Box 2088, Santa Fe, NM 87504-2088

☐ AMENDED REPORT

WELL LOCATION AND ACREAGE DEDICATION PLAT

*API Number 30-045-31014		*Pool Code 72319 \ 71599	*Pool Name BLANCO MESAVERDE \ BASIN DAKOTA
*Property Code 24025	*Property Name CLAYTON		*Well Number 2C
*GRID No. 173252	*Operator Name CORDILLERA ENERGY, INC.		*Elevation 5743'

¹⁰ Surface Location

UL or lot no.	Section	Township	Range	Lot Idn	Feet from the	North/South line	Feet from the	East/West line	County
J	2	30N	12W		1995	SOUTH	1975	EAST	SAN JUAN

¹¹ Bottom Hole Location If Different From Surface

UL or lot no.	Section	Township	Range	Lot Idn	Feet from the	North/South line	Feet from the	East/West line	County
¹² Dedicated Acres 320.0 Acres - (S/2)					¹³ Joint or Infill Y	¹⁴ Consolidation Code	¹⁵ Order No.		

NO ALLOWABLE WILL BE ASSIGNED TO THIS COMPLETION UNTIL ALL INTERESTS HAVE BEEN CONSOLIDATED
OR A NON-STANDARD UNIT HAS BEEN APPROVED BY THE DIVISION

¹⁶ 2628.78' 2643.30' 1304.82'			
LOT 4	LOT 3	LOT 6	LOT 5
1323.30'			1304.82'
1332.54'			1318.02'
2665.74'			2646.04'
2678.28' 2636.04'			

2

660' **660'** **1975'** **1995'**

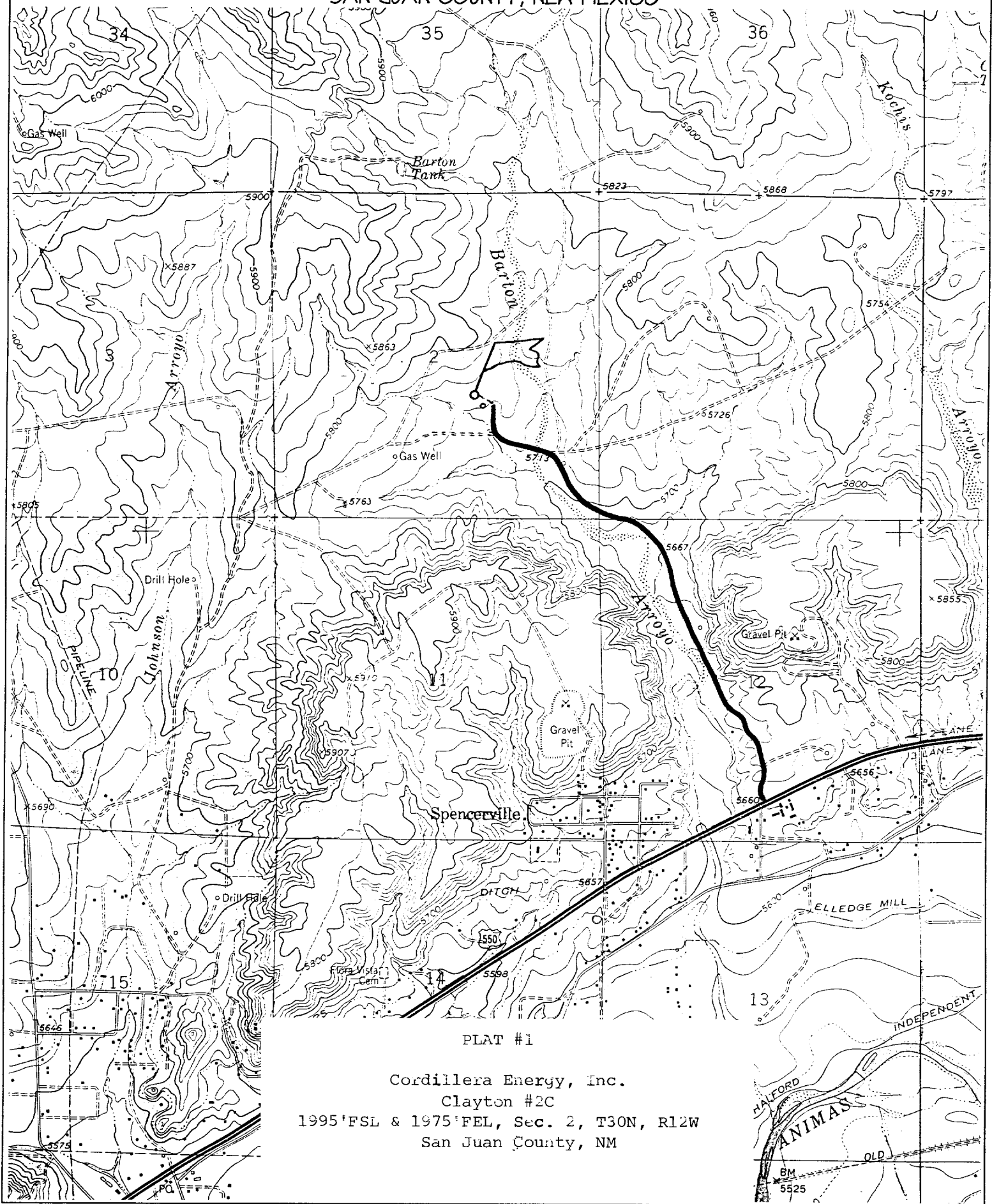
FEE

17 OPERATOR CERTIFICATION
I hereby certify that the information contained herein is true and complete to the best of my knowledge and belief
Paul C. Thompson
Signature
PAUL C. THOMPSON
Printed Name
AGENT
Title
3/8/02
Date

18 SURVEYOR CERTIFICATION
I hereby certify that the well location shown on this plat was plotted from field notes of actual surveys made by me or under my supervision, and that the same is true and correct to the best of my belief.
Survey Date: JANUARY 30, 2002
Signature and Seal of Professional Surveyor
JASON C. EDWARDS
NEW MEXICO
REGISTERED PROFESSIONAL SURVEYOR
15269
JASON C. EDWARDS
Certificate Number 15269

CORDILLERA ENERGY, INC. CLAYTON #2C

1995' FSL & 1975' FEL, SECTION 2, T30N, R12W, N.M.P.M.
SAN JUAN COUNTY, NEW MEXICO



PLAT #1

Cordillera Energy, Inc.
Clayton #2C
1995' FSL & 1975' FEL, Sec. 2, T30N, R12W
San Juan County, NM