

UNITED STATES
DEPARTMENT OF THE INTERIOR
BUREAU OF LAND MANAGEMENT
APPLICATION FOR PERMIT TO DRILL OR REENTER

1a. Type of Work ☒ DRILL ☐ REENTER
1b. Type of Well ☐ Oil Well ☒ Gas Well ☐ Other ☐ Single Zone ☒ Multiple Zone
2. Name of Operator

Devon Energy Production Company, L.P. Attn: Kim Walker

3a. Address 20 North Broadway, Suite 1500, OKC, OK 73102
3b. Phone No. (include area code) (405) 552-4734

4. Location of well (Report location clearly and in accordance with any State requirements. *)
At surface 660' FNL & 660' FWL NW NW Unit D
At bottom hole Same
At proposed prod. zone

5. DISTANCE IN MILES AND DIRECTION FROM NEAREST TOWN OR POST OFFICE*
Approx. 36 miles SE of Ignacio, CO

5. Lease Serial No.
SF-079045

6. If Indian, Allottee or Tribe Name
29831

7. If Unit or CA Agreement, Name and No.
Northeast Blanco Unit

8. Lease Name and Well No.
NEBU MD1 78

9. API Well No.
30-045-31024

10. Field and Pool, or Exploratory
Blanco Mesaverde Basin Dakota

11. Sec., T., R., M., or Blk. And Survey or Area
0 Sec. 21, T 31N, R 7W

12. County or Parish San Juan
13. State NM

15. Distance from proposed* location to nearest property or lease line, ft. 660'
(Also to nearest drlg unit line, if any)
16. No. of Acres in lease 2056.00
17. Spacing Unit dedicated to this well 320 ac. W/2

18. Distance from proposed location* to nearest well, drilling, completed, applied for, on this lease, ft.
19. Proposed Depth 8370'
20. BLM/ BIA Bond No. on file CO-1104

21. Elevations (Show whether DF, RT, GR, etc.) 6490' GL
22. Approximate date work will start* Upon Approval
23. Estimated Duration 20 Days

24. Attachments This action is subject to technical and procedural review pursuant to 43 CFR 3165.3
The following, completed in accordance with the requirements of Onshore Oil and Gas Order No. 1 shall be attached to this form: DRILLING OPERATIONS AUTHORIZED ARE SUBJECT TO COMPLIANCE WITH ATTACHED GENERAL REQUIREMENTS

- Well plat certified by a registered surveyor.
- A Drilling Plan.
- A Surface Use Plan (if the location is on National Forest System Lands, the SUPO shall be filed with the appropriate Forest Service Office).
- Bond to cover the operations unless covered by existing bond on file (see item 20 above).
- Operator certification.
- Such other site specific information and/ or plans as may be required by the authorized officer.

25. Signature Kim Walker Name (Printed/ Typed) Kim Walker Date 3/15/02

Title Regulatory Technician

Approved By (Signature) David J. Mankiewicz Name (Printed/ Typed) Date NOV - 1 2002

Title Office

Application approval does not warrant or certify that the applicant holds legal or equitable title to those rights in the subject lease which would entitle the applicant operations thereon.

Conditions of approval, if any, are attached.

Title 18 U.S.C. Section 1001 and Title 43 U.S.C. Section 1212, make it a crime for any person knowingly and willfully to make to any department or agency of the States any false, fictitious or fraudulent statements or representations as to any matter within its jurisdiction.

*(Instructions on reverse)

DISTRICT I
1825 N. French Dr., Hobbs, N.M. 88240

State of New Mexico
Energy, Minerals & Natural Resources Department

Form C-102
Revised August 15, 2000

DISTRICT II
811 South First, Artesia, N.M. 88210

Submit to Appropriate District Office
State Lease - 4 Copies
Fee Lease - 3 Copies

DISTRICT III
1000 Rio Brazos Rd., Artec, N.M. 87410

OIL CONSERVATION DIVISION
2040 South Pacheco
Santa Fe, NM 87505

DISTRICT IV
2040 South Pacheco, Santa Fe, NM 87505

☐ AMENDED REPORT

WELL LOCATION AND ACREAGE DEDICATION PLAT

1 API Number 30-045-31024		2 Pool Code 72319/71599	3 Pool Name Blanco Mesaverde/Basin Dakota
4 Property Code 29831	5 Property Name NEBU MDI		6 Well Number 78
7 OGRID No. 6137	8 Operator Name Devon Energy Production Company, L.P.		9 Elevation 6490

10 Surface Location

UL or lot no.	Section	Township	Range	Lot Idn	Feet from the	North/South line	Feet from the	East/West line	County
D	21	31-N	7-W		660	NORTH	660	WEST	SAN JUAN

11 Bottom Hole Location If Different From Surface

UL or lot no.	Section	Township	Range	Lot Idn	Feet from the	North/South line	Feet from the	East/West line	County
12 Dedicated Acres MV - 1/320 DK - 1/320					13 Joint or Infill		14 Consolidation Code		15 Order No.

NO ALLOWABLE WILL BE ASSIGNED TO THIS COMPLETION UNTIL ALL INTERESTS HAVE BEEN CONSOLIDATED
OR A NON-STANDARD UNIT HAS BEEN APPROVED BY THE DIVISION

16

FD U.S.G.L.O. BC. 1914	S 89-52-58 E 2635.5' (M)	FD U.S.G.L.O. BC. 1914
660'	657'	
660'	659'	
S 00-02-17 W 2639.1' (M)	LAT. 36°53'26" N LONG. 107°34'59" W	
FD U.S.G.L.O. BC. 1914	21	

17 OPERATOR CERTIFICATION

I hereby certify that the information contained herein
is true and complete to the best of my knowledge and
belief

Kim Walker
Signature
Kim Walker
Printed Name
Regulatory Technician
Title
3/15/02
Date

18 SURVEYOR CERTIFICATION

I hereby certify that the well location shown on this plat
was plotted from field notes of actual surveys made by
me or under my supervision, and that the same is true
and correct to the best of my knowledge

12-20
Date of Survey
Signature and Seal of Registered Professional Surveyor:
8894
Certificate Number

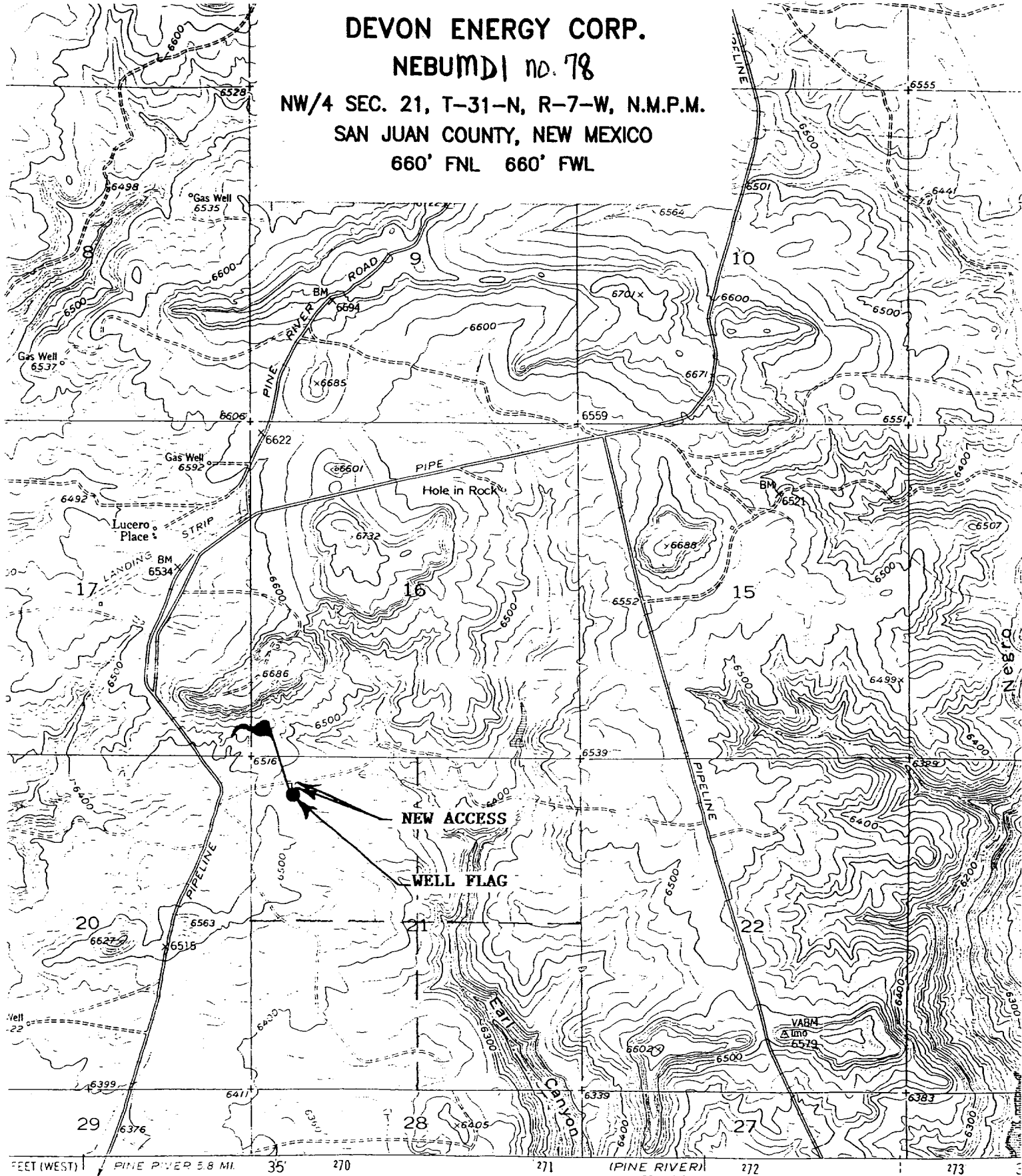
DEVON ENERGY CORP.

NEBUMDI NO. 78

NW/4 SEC. 21, T-31-N, R-7-W, N.M.P.M.

SAN JUAN COUNTY, NEW MEXICO

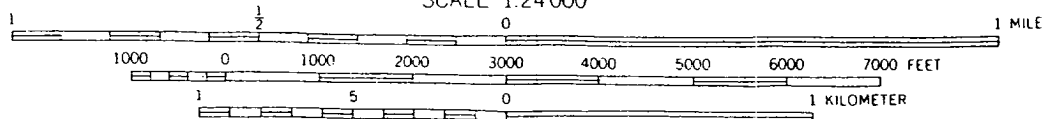
660' FNL 660' FWL



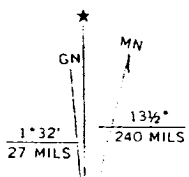
FEET (WEST) PINE RIVER 5.8 MI.

(PINE RIVER) 4.457 MI SE

SCALE 1:24,000



CONTOUR INTERVAL 20 FEET
DATUM IS MEAN SEA LEVEL



**NEBU MD1-78
Unit D-21-31N-7W
San Juan Co., NM**

DRILLING PLAN

1. ESTIMATED TOPS OF IMPORTANT GEOLOGIC MARKERS & ANTICIPATED WATER, OIL, GAS OR MINERAL FORMATIONS:

Formation	Depth (ft)	Hydrocarbon/Water Bearing Zones
San Jose	Surface	
Ojo Alamo	2290'	Aquifer
Kirtland	2390'	
Fruitland	2890'	Gas
Pictured Cliffs	3245'	Gas
Lewis	3530'	Gas
Intermediate TD	3630'	
Mesaverde	4100'	Gas
Chacra	4500'	
Massive Cliff House	5315'	Gas
Menefee	5340'	Gas
Massive Point Lookout	5630'	Gas
Mancos	5950'	
Gallup	6650'	Gas
Greenhorn	7685'	Gas
Graneros	7740'	
Dakota	8120'	Gas
TD	8370'	

All shows of fresh water and minerals will be adequately protected and reported.

2. PRESSURE CONTROL EQUIPMENT:

All well control equipment shall be in accordance with Onshore Order #2 for 2M systems.

The minimum specifications for pressure control equipment that will be provided are included on the attached schematic diagram which shows the size and pressure ratings.

2000# BOP With Pipe Rams
2000# BOP With Blind Rams

Auxiliary equipment to be used:

- Upper kelly cock with handle available.

The manifold includes appropriate valves and adjustable chokes. The kill line will have one check valve. Ram type preventers will be pressure tested to full working pressure (utilizing a test plug) or 70% of the internal yield pressure (without a test plug) at:

- Initial installation
- Whenever any seal subject to test pressure is broken
- Following related repairs
- At 30 day intervals

Pipe and blind rams shall be activated each trip.

A BOPE pit level drill will be conducted weekly for each drilling crew.

All tests and drills will be recorded in the drilling log.

The accumulator will have sufficient capacity to close all rams and retain 200 psi above pre-charge pressure without the use of closing unit pumps.

Master controls will be at the accumulator.

3. CASING & CEMENTING PROGRAM:

A. The proposed casing program will be as follows:

Depth	Hole Size	Size	Grade	Weight	Thread	Condition
0-250'	12-1/4"	9-5/8"	H-40	32#	STC	New
0-3630'	8-3/4"	7"	K-55	20#	STC	New
0-TD	6-1/4"	4-1/2"	K-55	11.6 #	LTC	New

All casing strings below the conductor shall be pressure tested to 0.22 psi/ft. of casing string length or 1500 psi, whichever is greater, but not to exceed 70% minimum internal yield.

The bottom three joints of the surface casing will have one centralizer per joint and one centralizer every fourth joint thereafter.

B. The proposed cementing program will be as follows:

Surface String: Cement will be circulated to surface. Estimated volume (180% of theoretical value):

Lead: 200 sks Class "B" with additives mixed at 15.6 ppg, 1.18 ft³/sks.

Intermediate String: Cement stage collar at 2850'.

First Stage: 225 sks 50/50 "G" Poz with additives mixed at 13.5 ppg, 1.28 ft³/sks, circulated to stage collar.

Second Stage: 350 sks Lite cement with additives mixed at 11.5 ppg, 2.40 ft³/sks, circulated to surface.

Production String: TOC will be tied into the intermediate casing.

Lead: 600 sks Class "G" cement with additives mixed at 15.8 ppg, 1.15 ft³/sks.

Actual volumes will be calculated and adjusted with caliper log prior to cementing.

4. DRILLING FLUIDS PROGRAM:

Interval	Type	Weight (ppg)	Viscosity	pH	Water Loss	Remarks
0-3630'	Spud	8.4-9.0	29-70	8.0	NC	FW gel, LSND
3630-7800'	Air				NC	
7800-TD	Mud	8.5-9.0*	30-50	8.0-10.0	8-10cc @ TD	Low solids – nondispersed. * Min Wt. to control formation pressure.

NC = no control

Sufficient quantities of mud material will be maintained on site or be readily accessible for the purpose of assuring well control. SPR will be recorded on daily drilling report after mudding up. Visual mud monitoring will be conducted during operations.

5. EVALUATION PROGRAM:

Logs: Platform Express AIT/GR/SP: Intermediate casing point to the base of the surface casing and TD to the base of the intermediate casing.

Platform Express CNL/LDT/PE: Intermediate casing point to the base of the surface casing and TD to the base of the intermediate casing.

Cores: None anticipated.

DST's: None anticipated.