

UNITED STATES
DEPARTMENT OF THE INTERIOR
BUREAU OF LAND MANAGEMENT

FORM APPROVED
OMB No. 1004-0136
Expires November 30, 2000

APPLICATION FOR PERMIT TO DRILL OR REENTER

1a. Type of Work: ☒ DRILL ☐ REENTER

1b. Type of Well: ☐ Oil Well ☒ Gas Well ☐ Other ☒ Single Zone ☐ Multiple Zone

2. Name of Operator: BP AMERICA PRODUCTION COMPANY
Contact: MARY CORLEY
E-Mail: corleym@bp.com

3a. Address
P.O. BOX 3092
HOUSTON, TX 77253

3b. Phone No. (include area code)
Ph: 281.366.4491
Fx: 281.366.0700

4. Location of Well (Report location clearly and in accordance with any State requirements.)*

At surface SWNE Lot 11 1770FNL 1650FEL 36.53200 N Lat, 107.49100 W Lon
At proposed prod. zone

14. Distance in miles and direction from nearest town or post office*
12 MILES FROM AZTEC, NEW MEXICO

15. Distance from proposed location to nearest property or lease line, ft. (Also to nearest drig. unit line, if any)
990

16. No. of Acres in Lease
315.08

18. Distance from proposed location to nearest well, drilling, completed, applied for, on this lease, ft.

19. Proposed Depth
5997 MD

21. Elevations (Show whether DF, KB, RT, GL, etc.)
6533 GL

22. Approximate date work will start
04/15/2002

5. Lease Serial No.
NMSF - 078336-B

6. If Indian, Allottee or Tribe Name

7. If Unit or CA Agreement, Name and No.

8. Lease Name and Well No.
BARRETT LS 2B

9. API Well No.
30-045-31028

10. Field and Pool, or Exploratory
BLANCO MESAVERDE

11. Sec., T., R., M., or Blk. and Survey or Area
G Sec 19 T31N R9W Mer NMP

12. County or Parish
SAN JUAN

13. State
NM

17. Spacing Unit dedicated to this well
315.08 E/P

20. BLM/BIA Bond No. on file

23. Estimated duration
6 DAYS

~~This action is subject to technical and procedural review pursuant to 43 CFR 3165.3 and appeal pursuant to 43 CFR 3165.4.~~

24. Attachments DRILLING OPERATIONS AUTHORIZED ARE
SUBJECT TO COMPLIANCE WITH ATTACHED

The following, completed in accordance with the requirements of Onshore Oil and Gas Order No. 1, shall be attached to this form:

1. Well plat certified by a registered surveyor.
2. A Drilling Plan.
3. A Surface Use Plan (if the location is on National Forest System Lands, the SUPO shall be filed with the appropriate Forest Service Office).

4. Bond to cover the operations unless covered by an existing bond on file (see Item 20 above).
5. Operator certification
6. Such other site specific information and/or plans as may be required by the authorized officer.

25. Signature (Electronic Submission) *Mary Corley*
Title
AUTHORIZED REPRESENTATIVE

Name (Printed/Typed)
MARY CORLEY

Date
03/18/2002

Approved by (Signature)

Name (Printed/Typed)

Date

Title

Office

Application approval does not warrant or certify the applicant holds legal or equitable title to those rights in the subject lease which would entitle the applicant to conduct operations thereon.
Conditions of approval, if any, are attached.

Title 18 U.S.C. Section 1001 and Title 43 U.S.C. Section 1212, make it a crime for any person knowingly and willfully to make to any department or agency of the United States any false, fictitious or fraudulent statements or representations as to any matter within its jurisdiction.

Additional Operator Remarks (see next page)

Electronic Submission #10803 verified by the BLM Well Information System
For BP AMERICA PRODUCTION COMPANY, sent to the Farmington

** ORIGINAL ** ORIGINAL ** ORIGINAL ** ORIGINAL ** ORIGINAL ** ORIGINAL ** ORIGINAL **

District I
PO Box 1980, Hobbs NM 88241-1980
District II
PO Drawer KK, Artesia, NM 87211-0719
District III
1000 Rio Brazos Rd., Aztec, NM 87410
District IV
PO Box 2088, Santa Fe, NM 87504-2088

State of New Mexico
Energy, Minerals & Natural Resources Department

OIL CONSERVATION DIVISION
PO Box 2088
Santa Fe, NM 87504-2088

Form C-102
Revised February 21, 1994
Instructions on back
Submit to Appropriate District Office
State Lease - 4 Copies
Fee Lease - 3 Copies

MAY 2002

☐ AMENDED REPORT

WELL LOCATION AND ACREAGE DEDICATION PLAT

¹ API Number 30-045-31028	² Pool Code 72319	³ Pool Name BLANCO MESA VERDE
⁴ Property Code 000305	⁵ Property Name Barrett LS	⁶ Well Number # 2B
⁷ OGRID No. 000778	⁸ Operator Name BP AMERICA PRODUCTION COMPANY	⁹ Elevation 6533

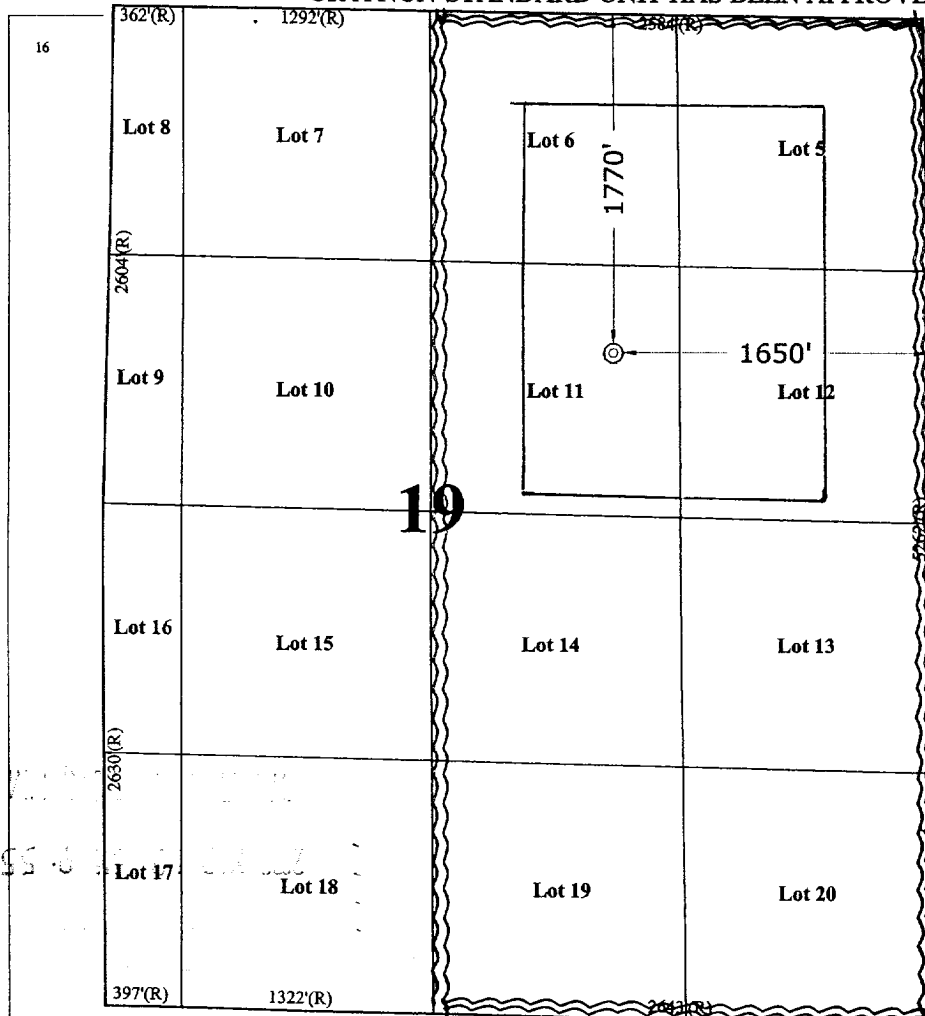
¹⁰ Surface Location

UL or Lot No.	Section	Township	Range	Lot Idn	Feet from the	North/South line	Feet from the	East/West line	County
G (Lot 11)	19	31 N	9 W		1770	NORTH	1650	EAST	SAN JUAN

¹¹ Bottom Hole Location If Different From Surface

⁷ UL or lot no.	Section	Township	Range	Lot Idn	Feet from the	North/South line	Feet from the	East/West line	County
¹² Dedicated Acres 315.08	¹³ Joint or Infill	¹⁴ Consolidation Code	¹⁵ Order No.						

NO ALLOWABLE WILL BE ASSIGNED TO THIS COMPLETION UNTIL ALL INTERESTS HAVE BEEN CONSOLIDATED
OR A NON-STANDARD UNIT HAS BEEN APPROVED BY THE DIVISION



¹⁷ OPERATOR CERTIFICATION

I hereby certify that the information contained herein is true and complete to the best of my knowledge and belief.

Signature: *Mary Corley*
Printed Name: MARY CORLEY
Title: REGULATORY ANALYST
Date: 03.18.2002

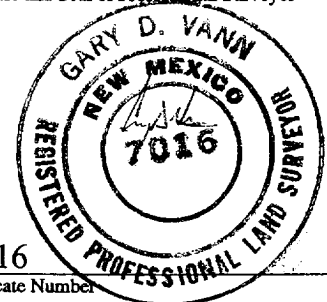
¹⁸ SURVEYOR CERTIFICATION

I hereby certify that the well location shown on this plat was plotted from field notes of actual surveys made by me or under my supervision, and that the same is true and correct to the best of my belief.

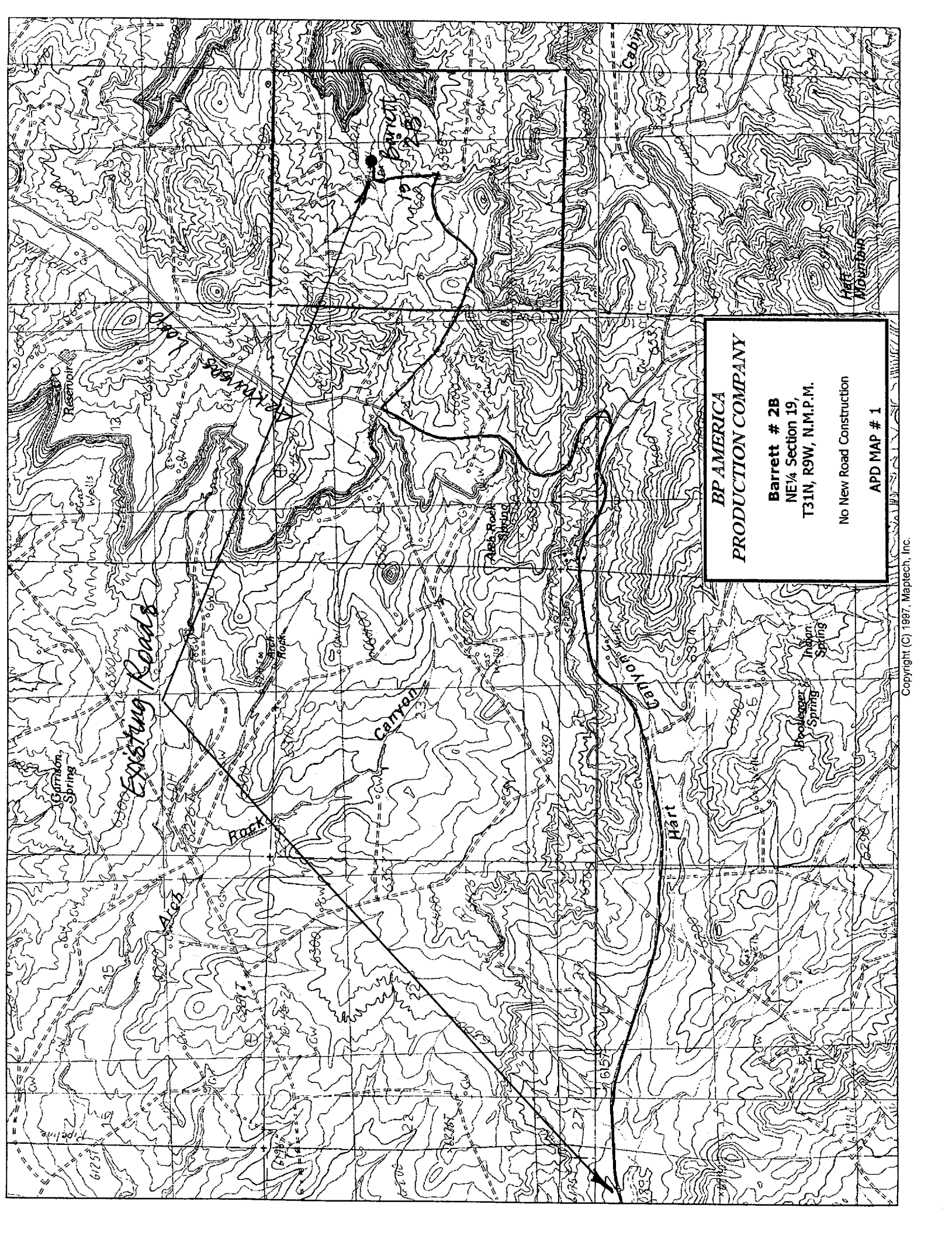
March 5, 2002

Date of Survey

Signature and Seal of Professional Surveyor



7016
Certificate Number



BP AMERICA
PRODUCTION COMPANY

Barrett # 2B
NE 1/4 Section 19,
T31N, R9W, N.M.P.M.

No New Road Construction

APD MAP # 1

**AMOCO PRODUCTION COMPANY
DRILLING AND COMPLETION PROGRAM**

Prospect Name: Barrett LS
Lease: Barrett LS
County: San Juan
State: New Mexico
Date: March 18, 2002

Well No: 2B
Surface Location: 19-31N-9W, 1770 FNL, 1650 FEL
Field: Blanco Mesaverde

OBJECTIVE: Drill 50' below the base of the Mancos Shale, set 4 1/2" production liner, Stimulate LS, CH, MF and PL intervals

METHOD OF DRILLING		APPROXIMATE DEPTHS OF GEOLOGICAL MARKER			
TYPE OF TOOLS	DEPTH OF DRILLING	Estimated GL: 6533		Estimated KB: 6547	
Rotary	0 - TD	MARKER		SUBSEA	TVD
LOG PROGRAM		Ojo Alamo		4665	1882
		Kirkland		4493	2054
		Fruitland		3773	2774
		Fruitland Coal	*	3619	2928
		Pictured Cliffs	*	3231	3316
		Lewis Shale	#	3011	3536
		Cliff House	#	1652	4895
		Menefee Shale	#	1290	5257
		Point Lookout	#	946	5601
		Mancos		600	5947
TYPE DEPTH INVERAL		TOTAL DEPTH		550	5997
		# Probable completion interval		* Possible Pay	
LOG PROGRAM		DRILL CUTTING SAMPLES		DRILLING TIME	
TYPE	DEPTH INVERAL	FREQUENCY	DEPTH	FREQUENCY	DEPTH
OPEN HOLE		none	Production hole	Geolograph	0-TD
none					
CASED HOLE					
GR-CCL-TDT	TDT – TD to 7" shoe				
CBL	Identify 4 ½" cement top				
REMARKS:					
- Please report any flares (magnitude & duration).					
SPECIAL TESTS					
TYPE					
None					
REMARKS:					

MUD PROGRAM:					
Approx. Interval	Type Mud	Weight, #/ga	Vis, sec/qt	W/L cc's/30 min	Other Specification
0 - 120	Spud	8.6-9.2			
120 - 2878 (1)	Water/LSND	8.6-9.2		<6	
2878 - 5997	Gas/Air/N2/Mist	Volume sufficient to maintain a stable and clean wellbore			

REMARKS:
(1) The hole will require sweeps to keep unloaded while fresh water drilling. Let hole conditions dictate frequency.

CASING PROGRAM: (Normally, tubular goods allocation letter specifies casing sizes to be used. Hole sizes will be governed by Contract)						
Casing String	Estimated Depth	Casing Size	Grade	Weight	Hole Size	Landing Pt, Cmt, Etc.
Surface/Conductor	120	9 5/8"	H-40 ST&C	32#	12.25"	1
Intermediate	2878	7"	J/K-55 ST&C	20#	8.75"	1,2
Production Liner	5997	4 1/2"	J-55	10.5#	6.25"	3, 4

REMARKS:
(1) Circulate Cement to Surface
(2) Set casing 50' above Fruitland Coal
(3) Bring cement 100' above 7" shoe
(4) 100' Overlap

CORING PROGRAM:
None

COMPLETION PROGRAM:
Rigless, 3-4 Stage Limited Entry Hydraulic Frac

GENERAL REMARKS:
Notify BLM/NMOCDD 24 hours prior to Spud, BOP testing, and Casing and Cementing.

Form 46 Reviewed by: _____ Logging program reviewed by: N/A

PREPARED BY:	APPROVED:	DATE:	
HGJ/MNP		11 th March 2002	
Form 46 12-00 MNP		Version 1.0	

FEDERAL CEMENTING REQUIREMENTS

1. All permeable zones containing fresh water and other usable water containing 10,000 PPM or less total dissolved solids will be isolated and protected from contamination by cement circulated in place for the protection of permeable zones per the NTL-FRA 90-1 Section III A.
2. The hole size will be no smaller than 1 ½" larger diameter than the casing O.D. across all water zones.
3. An adequate spacer will be pumped ahead of the cement slurry to help prevent mud contamination of the cement.
4. An adequate number of casing centralizers will be run through usable water zones to ensure that the casing is centralized through these zones. The adequate number of centralizers to use will be determined by API SPEC 10D.
5. Centralizers will impart a swirling action around the casing and will be used just below and into the base of the lowest usable water zone.
6. A chronological log will be kept recording the pump and slurry information and will be sent to the BLM with the subsequent sundry.

SAN JUAN BASIN Mesaverde Formation Pressure Control Equipment

Background

The objective Mesaverde formation maximum surface pressure is anticipated to be less than 1000 PSI, based on shut-in surface pressures from adjacent wells. Pressure control equipment working pressure minimum requirements are therefore 2000 PSI. Equipment to be used will conform to API RP-53 (Figure 2.C.2) for a 2000 PSI system per Federal Onshore Order No. 2. Due to available conventional equipment within the area, 3000 PSI rated pressure control equipment will typically be utilized in a double ram type arrangement. Regional drilling rights to be utilized have substructure height limitations which exclude the use of annular preventers; therefore a rotating head will be installed above these rams. This pressure control equipment will be utilized for conventional drilling below conductor to total depth. No abnormal temperature, pressure, or Hydrogen Sulfide gas is anticipated.

Equipment Specification

Interval

BOP Equipment

Below conductor casing to total depth

11" nominal or 7 1/16", 3000 PSI double ram
preventer with rotating head.

All ram type preventers and related control equipment will be hydraulically tested to 250 PSI (low pressure) and 750 PSI (high pressure), upon installation, following any repairs or equipment replacements, or at 30 day intervals. Accessories to BOP equipment will include Kelly cock, upper Kelly cock with a handle available, floor safety valves and choke manifold which will also be tested to equivalent pressure at the appropriate intervals