

APPLICATION FOR PERMIT TO DRILL, DEEPEN, OR PLUG BACK

1a. Type of Work DRILL	5. Lease Number SF-078511 Unit Reporting Number
1b. Type of Well GAS	6. If Indian, All. or Tribe
2. Operator BURLINGTON RESOURCES Oil & Gas Company	7. Unit Agreement Name
3. Address & Phone No. of Operator PO Box 4289, Farmington, NM 87499 (505) 326-9700	8. Farm or Lease Name Quinn 9. Well Number 339R
4. Location of Well 840' FNL, 1095' FWL Latitude 36° 53.3, Longitude 107° 42.2	10. Field, Pool, Wildcat Basin Fruitland Coal 11. Sec., Twn, Rge, Mer. (NMPM) Sec. 20, T-31-N, R-8-W API # 30-045-31073
14. Distance in Miles from Nearest Town Navajo Dam Post Office-19 Miles	12. County San Juan 13. State NM
15. Distance from Proposed Location to Nearest Property or Lease Line 840	
16. Acres in Lease	17. Acres Assigned to Well 320 W2
18. Distance from Proposed Location to Nearest Well, Drlg, Compl, or Applied for on this Lease 485'	
19. Proposed Depth 3373 <small>This section is subject to technical review and approval by the BLM. If approved, the applicant must submit a copy of the approved plan to the BLM.</small>	20. Rotary or Cable Tools Rotary
21. Elevations (DF, FT, GR, Etc.) 6490 GL	22. Approx. Date Work will Start
23. Proposed Casing and Cementing Program See Operations Plan attached	<small>DRILLING OPERATIONS AUTHORIZED ARE SUBJECT TO THE BLM'S ATTACHED "GENERAL REQUIREMENTS".</small>
24. Authorized by: <u>Mary Oltmanns-far</u> Regulatory/Compliance Supervisor	Date <u>4-18-02</u>

PERMIT NO. _____ APPROVAL DATE 5/10/02
 APPROVED BY D. M. TITLE _____ DATE _____

Archaeological Report to be submitted

Threatened and Endangered Species Report to be submitted

NOTE: This format is issued in lieu of U.S. BLM Form 3160-3

Title 18 U.S.C. Section 1001, makes it a crime for any person knowingly and willfully to make to any department or agency of the United States any false, fictitious or fraudulent statements or presentations as to any matter within its jurisdiction.

HOLD C104 FOR NSC

District I
PO Box 1980, Hobbs, NM 88241-1980

State of New Mexico
Energy, Minerals & Natural Resources Department

Form C-102
Revised February 21, 1994

District II
PO Drawer DD, Artesia, NM 88211-0719

OIL CONSERVATION DIVISION
PO Box 2088
Santa Fe, NM 87504-2088

Instructions on back
Submit to Appropriate District Office
State Lease - 4 Copies
Fee Lease - 3 Copies

District III
1000 Rio Brazos Rd., Aztec, NM 87410

District IV
PO Box 2088, Santa Fe, NM 87504-2088

☐ AMENDED REPORT

WELL LOCATION AND ACREAGE DEDICATION PLAT

*API Number 30-045 31073		*Pool Code 71629	*Pool Name Basin Fruitland Coal
*Property Code 7407	*Property Name QUINN		*Well Number 339R
*OGRID No. 14538	*Operator Name BURLINGTON RESOURCES OIL & GAS COMPANY, LP		*Elevation 6490'

¹⁰ Surface Location

UL or lot no.	Section	Township	Range	Lot Idn	Feet from the	North/South line	Feet from the	East/West line	County
D	20	31N	8W		840	NORTH	1095	WEST	SAN JUAN

¹¹ Bottom Hole Location If Different From Surface

UL or lot no.	Section	Township	Range	Lot Idn	Feet from the	North/South line	Feet from the	East/West line	County

¹² Dedicated Acres W/320	¹³ Joint or Infill	¹⁴ Consolidation Code	¹⁵ Order No.
--	-------------------------------	----------------------------------	-------------------------

NO ALLOWABLE WILL BE ASSIGNED TO THIS COMPLETION UNTIL ALL INTERESTS HAVE BEEN CONSOLIDATED
OR A NON-STANDARD UNIT HAS BEEN APPROVED BY THE DIVISION

<div><p>¹⁶</p></div>	<div><p>¹⁷ OPERATOR CERTIFICATION</p><p>I hereby certify that the information contained herein is true and complete to the best of my knowledge and belief</p><p><i>Nancy Altman</i> Signature</p><p>Peggy Cole Printed Name</p><p>Regulatory Supervisor</p><p>Title</p><p>4-18-02 Date</p></div> <div><p>¹⁸ SURVEYOR CERTIFICATION</p><p>I hereby certify that the well location shown on this plat was plotted from field notes of actual surveys made by me or under my supervision, and that the same is true and correct to the best of my belief.</p><p>Date of Survey: MARCH 19, 2002</p><p>Signature and Seal of Professional Surveyor</p><div></div><p>JASON C. EDWARDS Certificate Number 15269</p></div>
---------------------------------	--

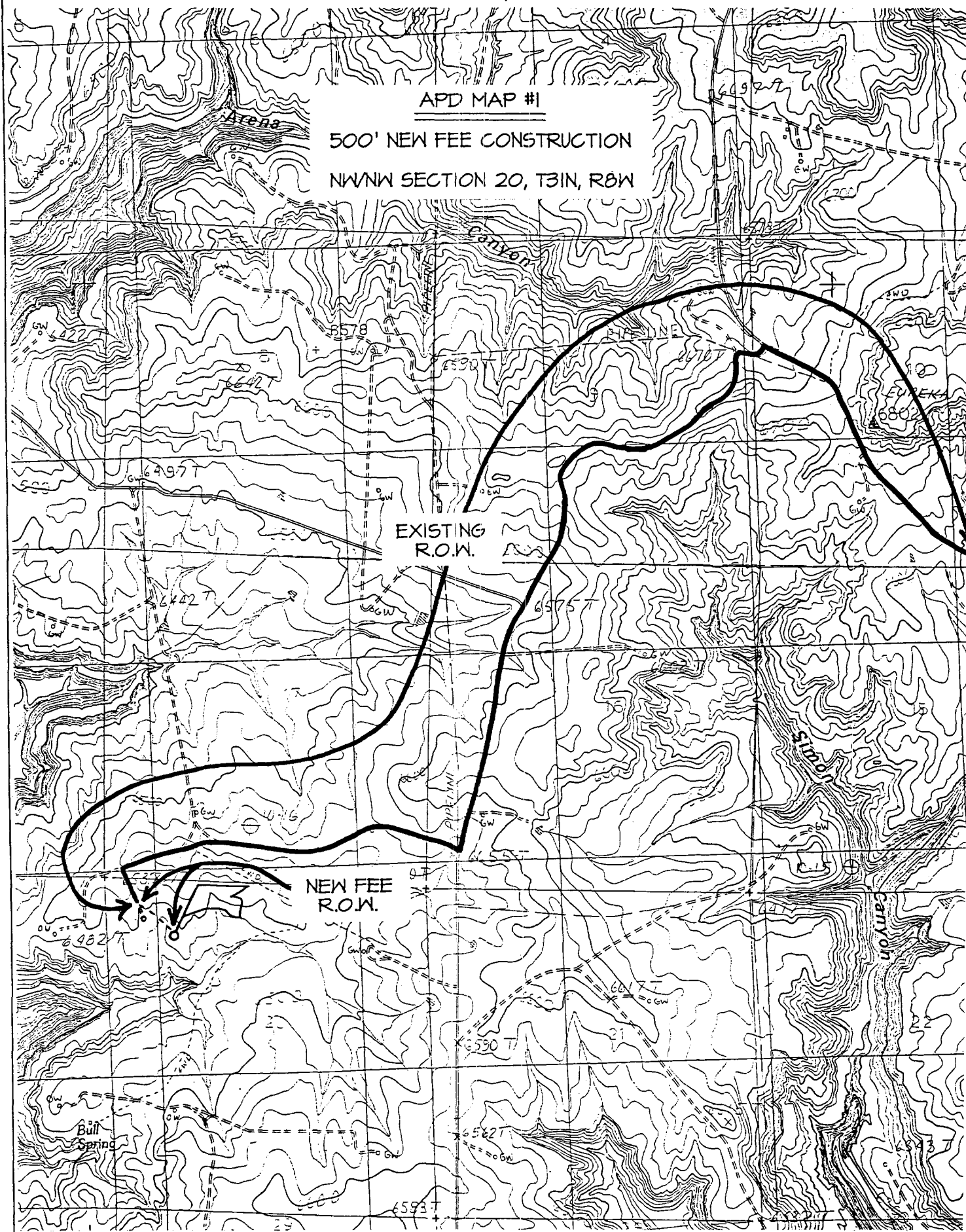
BURLINGTON RESOURCES OIL & GAS COMPANY QUINN #339R

840' FNL & 1095' FWL, SECTION 20, T31N, R8W, N.M.P.M.
SAN JUAN COUNTY, NEW MEXICO

APD MAP #1

500' NEW FEE CONSTRUCTION

NW1/4 SECTION 20, T31N, R8W



OPERATIONS PLAN

Well Name: Quinn 339R
Location: 840' FNL, 1095' FWL, Section 20, T-31-N, R-8-W
Latitude 36° 53.3'N, Longitude 107° 42.2'W
San Juan County, NM
Formation: Basin Fruitland Coal
Elevation: 6490' GR

Formation:	Top	Bottom	Contents
Surface	San Jose	2151'	
Ojo Alamo	2151'	2223'	aquifer
Kirtland	2223'	2953'	gas
Fruitland	2953'	3139'	gas
Intermediate casing	3119'		
T/Coal	3139	3363	gas
Basal Coal	3363'		gas
Total Depth	3373'		

Logging Program:

Open hole - GR, CDL - TD to 3119'
Mud log - TD to 3119'

Coring Program: none

Mud Program:

Interval	Type	Weight	Vis.	Fluid Loss
0- 200'	Spud	8.4-9.0	40-50	no control
200-3119'	Non-dispersed	8.4-9.0	30-60	no control
3119'-3373'	Air/Mist			

Casing Program (as listed, the equivalent, or better):

Hole Size	Depth Interval	Csg. Size	Wt.	Grade
12 1/4"	0' - 200'	9 5/8"	32.3#	H-40
8 3/4"	0' - 3119'	7"	20.0#	K-55
6 1/4"	3079' - 3373'	5 1/2"	15.5#	K-55

Tubing Program:

0' - 3373'	2 3/8"	4.7#	J-55
------------	--------	------	------

Float Equipment: 9 5/8" surface casing - saw tooth guide shoe.
Centralizers will be run in accordance with Onshore Order #2.

7" intermediate casing - guide shoe and self-fill float collar. Three centralizers run every fourth joint above shoe. Two turbolizing type centralizers - one below and one into the base of the Ojo Alamo @ 2953'. Standard centralizers thereafter every fourth joint up to the base of the surface pipe.

5 1/2" production casing - Pre-drilled liner run to the 7" casing with an overlap. Liner hanger is a slip grip type.

Wellhead Equipment: 9 5/8" x 7" x 2 3/8" x 11" 3000 psi xmas tree assembly.

Cementing:

9 5/8" surface casing - cement with 133 sx Type III cement with ¼ pps cellophane and 2% calcium chloride (188 cu.ft. of slurry, 200% excess to circulate to surface). WOC 8 hrs. Test casing to 600 psi/30 minutes.

7" intermediate casing - lead w/382 sacks Premium Lite with 3% Cacl, 5pps Lcm-1, 0.4% FL-52, 0.4% sms and ¼ pps sack Flocele. Tail with 90 sacks Type III Cement with 1% calcium chloride, 1/4 pps flocele Type III Cement (938 cu.ft., 100% excess to circulate to surface).

5 1/2" liner - uncemented.

Note: If open hole logs are run, cement volumes will be based on 25% excess over caliper volumes.

BOP and tests:

Surface to intermediate TD - 11" 2000 psi (minimum) double gate BOP stack (Reference Figure #1). Prior to drilling out surface casing, test rams to 600#/30 min.

Intermediate TD to Total Depth - 7 1/6" 2000 psi (minimum) double gate BOP stack (Reference Figure #2). Prior to drilling out intermediate casing, test blind rams and casing to 2500 psi for 30 minutes; all pipe rams and casing to 2500 psi for 30 minutes each.

From surface to TD - choke manifold (Reference Figure #3).

Pipe rams will be actuated at least once each day and blind rams actuated once each trip to test proper functioning. An upper kelly cock valve with handle and drill string safety valves to fit each drill string will be maintained and available on the rig floor.

Additional information:

- The Fruitland Coal formation will be completed.
- Anticipated pore pressure for the Fruitland is 1000 psi.
- This gas is dedicated.
- The west half of section 20 is dedicated to this well.

Drilling Engineer: Eric J. Giles Date: 4/18/02