

**UNITED STATES**  
**DEPARTMENT OF THE INTERIOR**  
**BUREAU OF LAND MANAGEMENT**  
**APPLICATION FOR PERMIT TO DRILL OR REENTER**

5. Lease Serial No.  
**SF-078988**

6. If Indian, Allottee or Tribe Name

7. If Unit or CA Agreement, Name and No.  
**Northeast Blanco Unit**

8. Lease Name and Well No.  
**NEBU 60A**

1a. Type of Work ☒ DRILL ☐ REENTER  
1b. Type of Well ☐ Oil Well ☒ Gas Well ☐ Other ☐ Single Zone ☒ Multiple Zone

2. Name of Operator  
**Devon Energy Production Company, L.P. Attn: Kim Walker**

9. API Well No.  
**30-045-31088**

3a. Address  
**20 North Broadway, Suite 1500, OKC, OK 73102**

3b. Phone No. (include area code)  
**(405) 552-4734**

10. Field and Pool, or Exploratory  
**Blanco Mesaverde Basin Dakota**

4. Location of well (Report location clearly and in accordance with any State requirements. \*)  
At surface **920' FSL & 1270' FEL SE SE Unit P**  
At bottom hole **Same** This action is subject to technical and procedural review pursuant to 43 CFR 3165.3 and appeal pursuant to 43 CFR 3165.4  
At proposed prod. zone

11. Sec., T., R., M., or Blk. And Survey or Area  
**Sec. 7, T 31N, R 6W**

14. DISTANCE IN MILES AND DIRECTION FROM NEAREST TOWN OR POST OFFICE\*  
**Approx. 24 miles SE of Ignacio, CO**

12. County or Parish  
**San Juan**

13. State  
**NM**

15. Distance from proposed\* location to nearest property or lease line, ft.  
**920'**  
(Also to nearest drlg unit line, if any)

16. No. of Acres in lease  
**2560.00**

17. Spacing Unit dedicated to this well  
**320 ac. E/2**

18. Distance from proposed location\* to nearest well, drilling, completed, applied for, on this lease, ft.

19. Proposed Depth  
**8270'**

20. BLM/ BIA Bond No. on file  
**CO-1104**

21. Elevations (Show whether DF, RT, GR, etc.)  
**6488' GL**

22. Aproximate date work will start\*  
**Upon Approval**

23. Estimated Duration  
**20 Days**

24. Attachments  
**DRILLING OPERATIONS AUTHORIZED ARE SUBJECT TO COMPLIANCE WITH ATTACHED "GENERAL REQUIREMENTS".**

The following, completed in accordance with the requirements of Onshore Oil and Gas Order No. 1 shall be attached to this form:

- Well plat certified by a registered surveyor.
- A Drilling Plan.
- A Surface Use Plan (if the location is on National Forest System Lands, the SUPO shall be filed with the appropriate Forest Service Office).
- Bond to cover the operations unless covered by existing bond on file (see item 20 above).
- Operator certification.
- Such other site specific information and/ or plans as may be required by the authorized officer.

25. Signature **Kim Walker** Name (Printed/ Typed) **Kim Walker** Date **4/30/02**

Title **Regulatory Technician**

Approved By (Signature) **/s/ Charlie Beecham** Name (Printed/ Typed) Date **AUG 16 2002**

Title **ACTING** Office

Application approval does not warrant or certify that the applicant holds legal or equitable title to those rights in the subject lease which would entitle the applicant operations thereon.

Conditions of approval, if any, are attached.

Title 18 U.S.C. Section 1001 and Title 43 U.S.C. Section 1212, make it a crime for any person knowingly and willfully to make to any department or agency of the States any false, fictitious or fraudulent statements or representations as to any matter within its jurisdiction.

\* (Instructions on reverse)

**NMOCD**

DISTRICT I  
1625 N. French Dr., Hobbs, N.M. 88240

State of New Mexico  
Energy, Minerals & Natural Resources Department

Form C-102  
Revised August 15, 2000

DISTRICT II  
811 South First, Artesia, N.M. 88210

Submit to Appropriate District Office  
State Lease - 4 Copies  
Fee Lease - 3 Copies

DISTRICT III  
1000 Rio Brazos Rd., Aztec, N.M. 87410

OIL CONSERVATION DIVISION  
2040 South Pacheco  
Santa Fe, NM 87505

DISTRICT IV  
2040 South Pacheco, Santa Fe, NM 87505

☐ AMENDED REPORT

WELL LOCATION AND ACREAGE DEDICATION PLAT

*API Number 30-045-31088		*Pool Code 72319/71599	*Pool Name Blanco Mesaverde/Basin Dakota
*Property Code 019641	*Property Name NEBU		*Well Number 60A
*OGRID No. 006137	*Operator Name DEVON ENERGY Production Company, L.P.		*Elevation 6488

<sup>10</sup> Surface Location

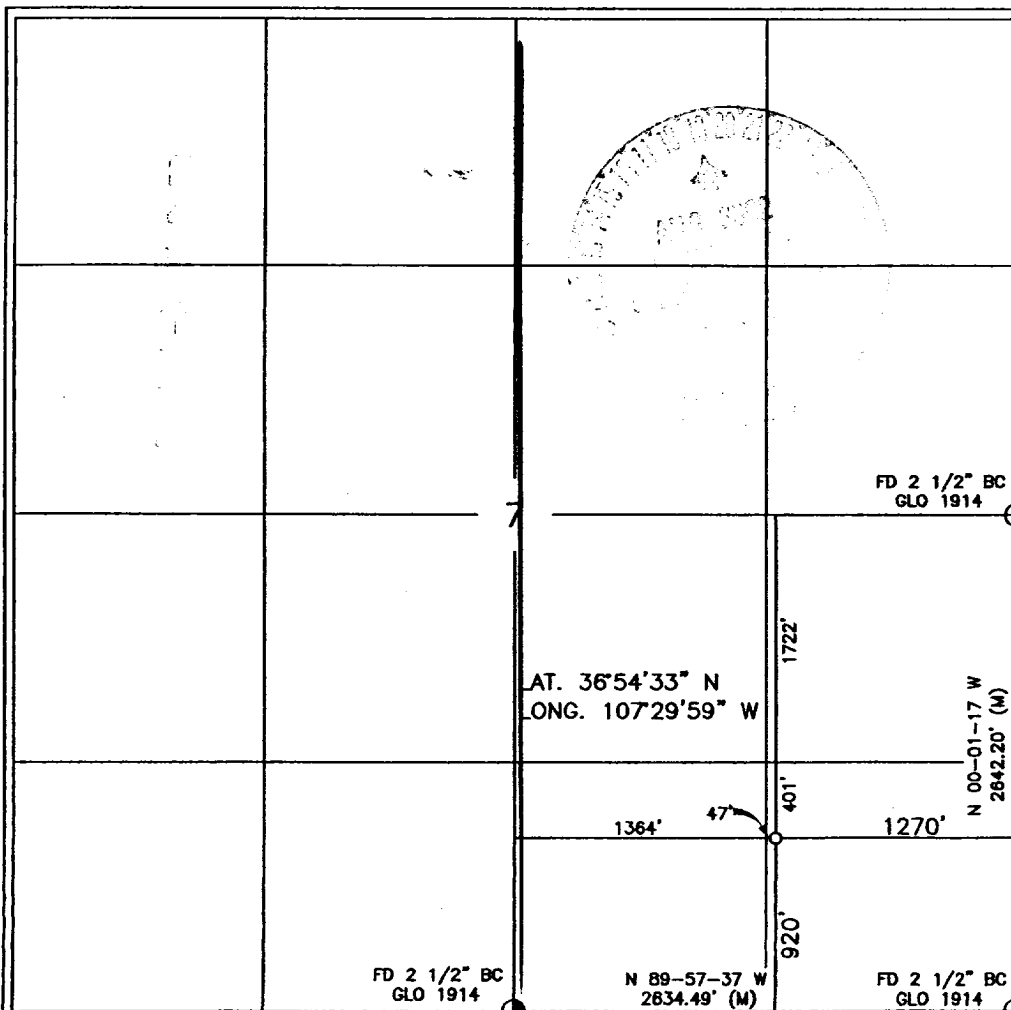
UL or lot no.	Section	Township	Range	Lot Idn	Feet from the	North/South line	Feet from the	East/West line	County
P	7	31-N	6-W		920	SOUTH	1270	EAST	SAN JUAN

<sup>11</sup> Bottom Hole Location If Different From Surface

UL or lot no.	Section	Township	Range	Lot Idn	Feet from the	North/South line	Feet from the	East/West line	County
*Dedicated Acres MV-E/320 DK-E/320			*Joint or Infill		*Consolidation Code		*Order No.		

NO ALLOWABLE WILL BE ASSIGNED TO THIS COMPLETION UNTIL ALL INTERESTS HAVE BEEN CONSOLIDATED  
OR A NON-STANDARD UNIT HAS BEEN APPROVED BY THE DIVISION

16



17 OPERATOR CERTIFICATION

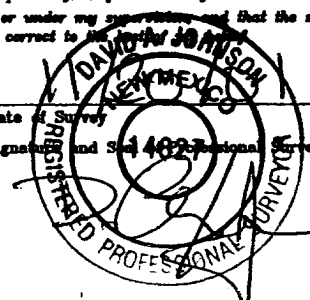
I hereby certify that the information contained herein  
is true and complete to the best of my knowledge and  
belief

Kim Walker  
Signature  
Kim Walker  
Printed Name  
Regulatory Technician  
Title  
Date 4/30/02

18 SURVEYOR CERTIFICATION

I hereby certify that the well location shown on this plat  
was plotted from field notes of actual surveys made by  
me or under my supervision and that the same is true  
and correct to the best of my knowledge and belief

Date of Survey  
Signature and Seal of Registered Professional Surveyor



14827

Certificate Number

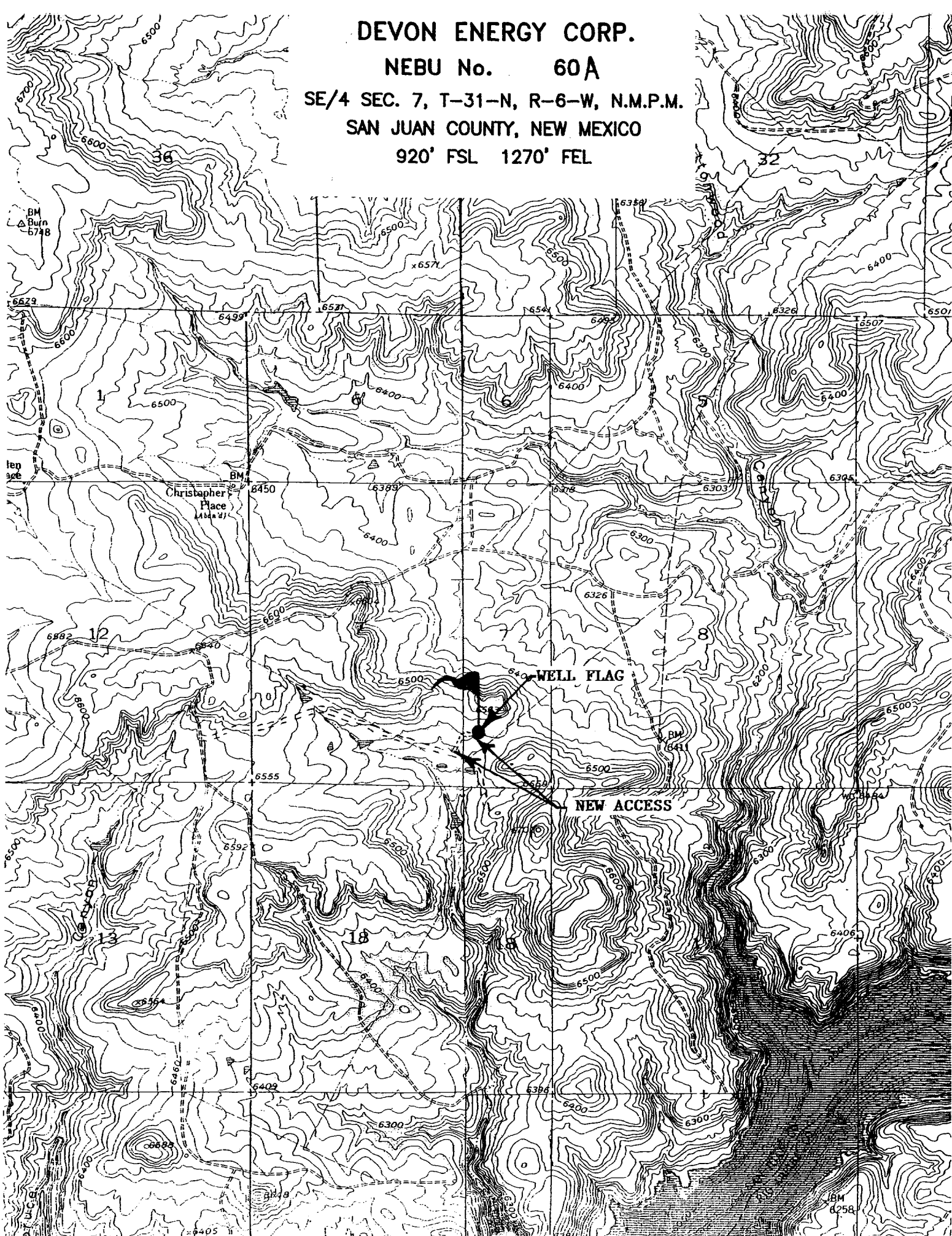
DEVON ENERGY CORP.

NEBU No. 60A

SE/4 SEC. 7, T-31-N, R-6-W, N.M.P.M.

SAN JUAN COUNTY, NEW MEXICO

920' FSL 1270' FEL



**NEBU 60A  
Unit P-7-31N-6W  
San Juan Co., NM**

**DRILLING PLAN**

**1. ESTIMATED TOPS OF IMPORTANT GEOLOGIC MARKERS & ANTICIPATED WATER, OIL, GAS OR MINERAL FORMATIONS:**

<b>Formation</b>	<b>Depth (ft)</b>	<b>Hydrocarbon/Water Bearing Zones</b>
San Jose	Surface	
Ojo Alamo	2425'	Aquifer
Kirtland	2540'	
Fruitland	3025'	Gas
Pictured Cliffs	3350'	Gas
Lewis	3530'	Gas
<b>Intermediate TD</b>	<b>3630'</b>	
Mesaverde	4255'	Gas
Chacra	4655'	Gas
Massive Cliff House	5100'	Gas
Menefee	5490'	Gas
Massive Point Lookout	5760'	Gas
Mancos	6100'	Gas
Gallup	7050'	Gas
Greenhorn	7810'	
Graneros	7865'	Gas
Dakota	7995'	Gas
<b>TD</b>	<b>8270'</b>	

All shows of fresh water and minerals will be adequately protected and reported.

**2. PRESSURE CONTROL EQUIPMENT:**

All well control equipment shall be in accordance with Onshore Order #2 for 2M systems.

The minimum specifications for pressure control equipment that will be provided are included on the attached schematic diagram which shows the size and pressure ratings.

2000# BOP With Pipe Rams  
2000# BOP With Blind Rams

Auxiliary equipment to be used:

- Upper kelly cock with handle available.

The manifold includes appropriate valves and adjustable chokes. The kill line will have one check valve. Ram type preventers will be pressure tested to full working pressure (utilizing a test plug) or 70% of the internal yield pressure (without a test plug) at:

- Initial installation
- Whenever any seal subject to test pressure is broken
- Following related repairs
- At 30 day intervals

Pipe and blind rams shall be activated each trip.

A BOPE pit level drill will be conducted weekly for each drilling crew.

All tests and drills will be recorded in the drilling log.

The accumulator will have sufficient capacity to close all rams and retain 200 psi above pre-charge pressure without the use of closing unit pumps.

Master controls will be at the accumulator.

### **3. CASING & CEMENTING PROGRAM:**

A. The proposed casing program will be as follows:

Depth	Hole Size	Size	Grade	Weight	Thread	Condition
0-250'	12-1/4"	9-5/8"	H-40	32#	STC	New
0-3630'	8-3/4"	7"	K-55	23#	LTC	New
0-TD	6-1/4"	4-1/2"	K-55	11.6 #	LTC	New

All casing strings below the conductor shall be pressure tested to 0.22 psi/ft. of casing string length or 1500 psi, whichever is greater, but not to exceed 70% minimum internal yield.

The bottom three joints of the surface casing will have a minimum of one centralizer per joint and one centralizer every fourth joint thereafter.

B. The proposed cementing program will be as follows:

**Surface String:** Cement will be circulated to surface. Estimated volume (180% of theoretical value):

**Lead:** 200 sks Class "B" with additives mixed at 15.6 ppg, 1.19 ft<sup>3</sup>/sks.

**Intermediate String:** Cement stage collar at 2975'.

**First Stage:** 165 sks 50/50 "G" Poz with additives mixed at 13.5 ppg, 1.40 ft<sup>3</sup>/sks, circulated to stage collar.

**Second Stage:** 300 sks 65/35 "G" Poz with additives mixed at 12.3 ppg, 2.02 ft<sup>3</sup>/sks, circulated to surface.

**Production String:** TOC will be tied into the intermediate casing. *-100' min.*

**Lead:** 675 sks 50/50 Poz cement @ 13 lb/gal, 1.47 ft<sup>3</sup>/sks.

Actual volumes will be calculated and adjusted with caliper log prior to cementing.

#### 4. DRILLING FLUIDS PROGRAM:

Interval	Type	Weight (ppg)	Viscosity	pH	Water Loss	Remarks
0-3630'	Spud-foam	8.4-9.0	29-70	8.0	NC	FW gel, LSND or stiff foam
3630-7865'	Air				NC	
7865-TD	Mud	8.5-9.0*	30-50	8.0-10.0	8-10cc @ TD	Low solids – nondispersed. * Min Wt. to control formation pressure.

NC = no control

Sufficient quantities of mud material will be maintained on site or be readily accessible for the purpose of assuring well control. SPR will be recorded on daily drilling report after mudding up. Visual mud monitoring will be conducted during operations.

#### 5. EVALUATION PROGRAM:

**Logs:** Platform Express AIT/GR/SP: Intermediate casing point to the base of the surface casing and TD to the base of the intermediate casing.

Platform Express CNL/LDT/PE: Intermediate casing point to the base of the surface casing and TD to the base of the intermediate casing.

**Survey:** Deviation surveys will be taken every 500' from 0-3630' or first succeeding bit change. The hole will be air drilled from 3640'-TD. The equipment used in this type of operation will not allow for single shot surveys without considerable