

UNITED STATES
DEPARTMENT OF THE INTERIOR
BUREAU OF LAND MANAGEMENT

APPLICATION FOR PERMIT TO DRILL, DEEPEN, OR PLUG BACK

1a. Type of Work DRILL	5. Lease Number NMNM-02758 Unit Reporting Number
1b. Type of Well GAS	6. If Indian, All. or Tribe
2. Operator BURLINGTON RESOURCES Oil & Gas Company	7. Unit Agreement Name
3. Address & Phone No. of Operator PO Box 4289, Farmington, NM 87499 (505) 326-9700	8. Farm or Lease Name Murphy D 9. Well Number 1Y
4. Location of Well 1090' FSL, 1605' FEL Latitude 36° 46.7, Longitude 107° 58.5	10. Field, Pool, Wildcat Aztec Pictured Cliffs 11. Sec., Twn, Rge, Mer. (NMPM) 0 Sec. 27, T-30-N, R-11-W API # 30-045- 31132
14. Distance in Miles from Nearest Town 3.4 miles from Aztec, NM Post Office	12. County San Juan 13. State NM
15. Distance from Proposed Location to Nearest Property or Lease Line 1090'	17. Acres Assigned to Well 158.66 SE/4
16. Acres in Lease	
18. Distance from Proposed Location to Nearest Well, Drig, Compl, or Applied for on this Lease 754'	
19. Proposed Depth 2574'	20. Rotary or Cable Tools Rotary
21. Elevations (DF, FT, GR, Etc.) 5955' GR	22. Approx. Date Work will Start
23. Proposed Casing and Cementing Program See Operations Plan attached	DRILLING OPERATIONS AUTHORIZED ARE SUBJECT TO COMPLIANCE WITH ATTACHED "GENERAL REQUIREMENTS".
24. Authorized by: <u><i>Peggy Case</i></u> Regulatory/Compliance Supervisor	Date <u>6-17-02</u>

PERMIT NO.

APPROVAL DATE

APPROVED BY /s/ David J. Mankiewicz

TITLE

DATE OCT 15 2002

Archaeological Report to be submitted

Threatened and Endangered Species Report to be submitted

NOTE: This format is issued in lieu of U.S. BLM Form 3160-3

Title 18 U.S.C. Section 1001, makes it a crime for any person knowingly and willfully to make to any department or agency of the United States any false, fictitious or fraudulent statements or presentations as to any matter within its jurisdiction.

MMOCD

DISTRICT I
P.O. Box 1980, Hobbs, N.M. 88241-1980

DISTRICT II
P.O. Drawer DD, Artesia, N.M. 88211-0719

DISTRICT III
1000 Rio Brazos Rd., Aztec, N.M. 87410

DISTRICT IV
PO Box 2088, Santa Fe, NM 87504-2088

State of New Mexico
Energy, Minerals & Natural Resources Department

OIL CONSERVATION DIVISION

P.O. Box 2088
Santa Fe, NM 87504-2088

Form C-102

Revised February 21, 1994

Instructions on back

Submit to Appropriate District Office

State Lease - 4 Copies

Fee Lease - 3 Copies

☐ AMENDED REPORT

WELL LOCATION AND ACREAGE DEDICATION PLAT

¹ API Number 30-045-31132	² Pool Code 71280	³ Pool Name Aztec Pictured Cliffs
⁴ Property Code 7339	⁵ Property Name MURPHY D	⁶ Well Number 1Y
⁷ GRID No. 14538	⁸ Operator Name BURLINGTON RESOURCES OIL & GAS INC.	⁹ Elevation 5955

¹⁰Surface Location

UL or lot no.	Section	Township	Range	Lot Idn	Feet from the	North/South line	Feet from the	East/West line	County
0	27	30-N	11-W		1090	SOUTH	1605	EAST	SAN JUAN

¹¹Bottom Hole Location If Different From Surface

UL or lot no.	Section	Township	Range	Lot Idn	Feet from the	North/South line	Feet from the	East/West line	County
¹² Dedicated Acres SE/158.66		¹³ Joint or Infill		¹⁴ Consolidation Code		¹⁵ Order No.			

NO ALLOWABLE WILL BE ASSIGNED TO THIS COMPLETION UNTIL ALL INTERESTS HAVE BEEN CONSOLIDATED
OR A NON-STANDARD UNIT HAS BEEN APPROVED BY THE DIVISION

¹⁶ SEC. CORNER FD 3 1/4" BLM 1969 B.C.	S 88°04'15" E 2591.82' (M)	QTR. CORNER FD 3 1/4" BLM 1969 B.C.	S 88°02'10" E 2589.26' (M)	SEC. CORNER FD 3 1/4" BLM 1969 B.C.	¹⁷ OPERATOR CERTIFICATION
LOT 4	LOT 3	LOT 2	LOT 1		I hereby certify that the information contained herein is true and complete to the best of my knowledge and belief
LOT 5	LOT 6	LOT 7	LOT 8		<u>Peggy Cole</u> Signature Peggy Cole Printed Name Regulatory Supervisor Title 6-17-02 Date
QTR. CORNER FD 3 1/4" GLO 1916 B.C.	27	QTR. CORNER FD 3 1/4" BLM 1969 B.C.	QTR. CORNER FD 3 1/4" BLM 1969 B.C.		¹⁸ SURVEYOR CERTIFICATION
LOT 12	LOT 11	LOT 10	LOT 9		I hereby certify that the well location shown on this plat was plotted from field notes of actual surveys made by me or under my supervision, and that the same is true and correct to the best of my belief.
LOT 13	LOT 14	LOT 15	LOT 16		<u>DAVID A. JOHNSON</u> Date of Survey Signature and Seal of Professional Surveyor 14827 Certificate Number
SEC. CORNER FD 3 1/4" BLM 1969 B.C.	N 88°22'02" W 2586.28' (M)	QTR. CORNER FD 3 1/4" BLM 1969 B.C.	N 88°22'19" W 2596.27' (M)		

BURLINGTON RESOURCES OIL & GAS INC.

MURPHY D #1Y

SE/4 SEC.27, T-30-N, R-11-W, N.M.P.M.

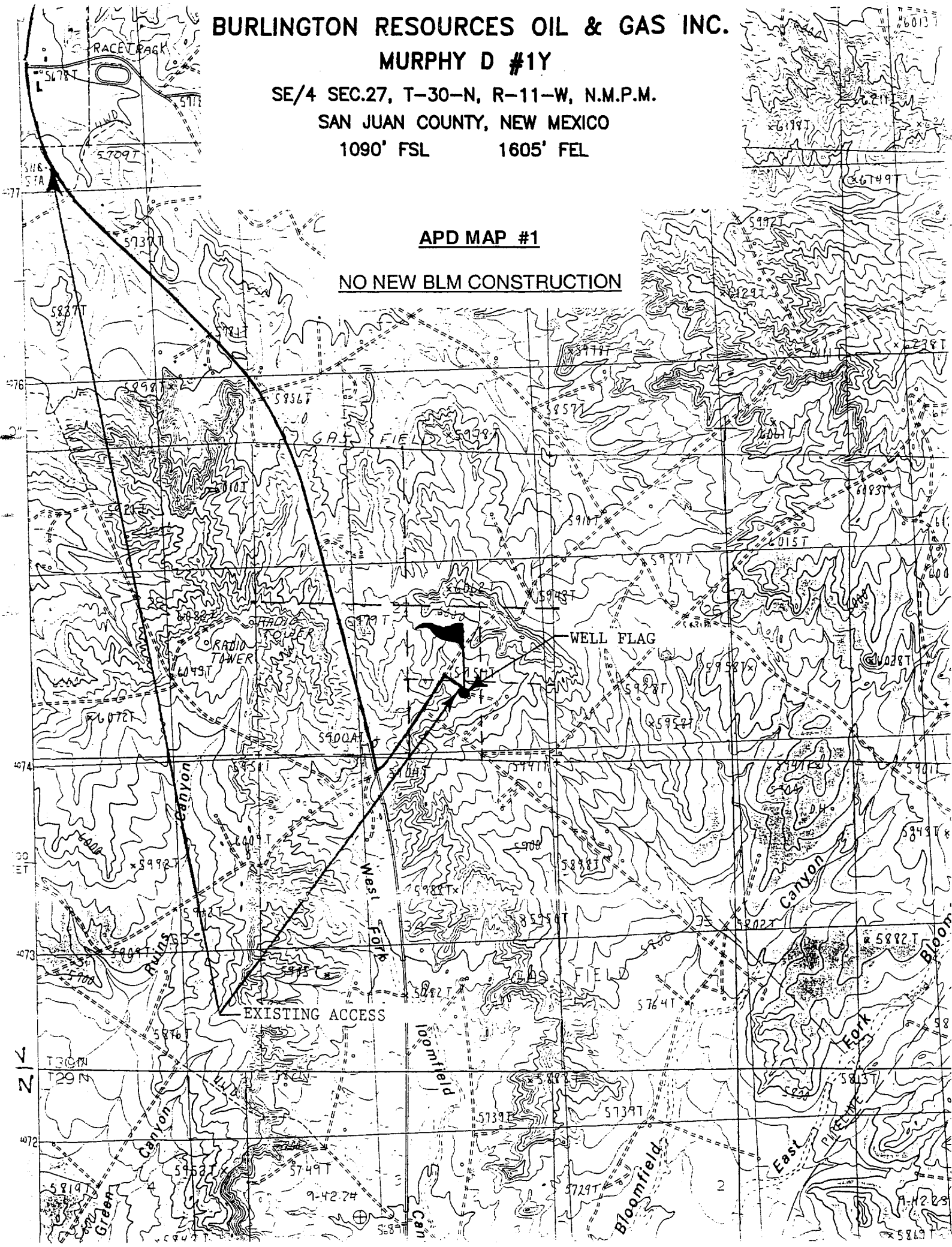
SAN JUAN COUNTY, NEW MEXICO

1090' FSL

1605' FEL

APD MAP #1

NO NEW BLM CONSTRUCTION



OPERATIONS PLAN

Well Name: Murphy D #1Y
Location: 1090' FSL, 1605' FEL, Section 27, T-30-N, R-11-W
San Juan County, New Mexico
Latitude 36° 46.7' N, Longitude 107° 58.5' W
Formation: Aztec Pictured Cliffs
Elevation: 5955' GR

Formation:	Top	Bottom	Contents
Surface	San Jose	970'	
Ojo Alamo	970'	1075'	aquifer
Kirtland	1075'	1739'	gas
Fruitland	1739'	2299'	gas
Pictured Cliffs	2299'		gas
Total Depth	2574'		

Logging Program: cased hole - CBL/GR/CCL TD to surface

Coring Program: None

Mud Program:

Interval	Type	Weight	Vis.	Fluid Loss
0- 120'	Spud	8.4-9.0	40-50	no control
120-2574'	FW	8.4-9.0	32-45	no control

Casing Program (as listed, equivalent, or better):

Hole Size	Depth Interval	Csg. Size	Wt.	Grade
9 7/8"	0 - 120'	7"	20#	J-55
6 1/4"	0 - 2574'	2 7/8"	6.5#	J-55

Float Equipment: 7" surface casing - saw tooth guide shoe.
Centralizers will be run in accordance with Onshore Order #2.

2 7/8" production casing - float shoe on bottom. Three centralizers run every other joint above shoe. Fourteen centralizers run every 3rd joint to the base of the Ojo Alamo @ 1075'. Two turbolizing type centralizers - one below and one into the base of the Ojo Alamo @ 1075'. Standard centralizers thereafter every fourth joint up to the base of the surface pipe.

Wellhead Equipment: 7" x 2 7/8" 2000 psi screw on independent wellhead.

Cementing:

7" surface casing - cement with 27 sx Class A, B Portland Type I, II cement (32 cu.ft. of slurry, bring cement to surface through 3/4" line).
WOC 8 hrs. Test casing to 600 psi for 30 minutes.

2 7/8" production casing - Lead w/248 sx Premium Lite cement w/3% calcium chloride, 1/4 pps cello-flake, 5 pps LCM-1, 0.4% FL-52, and 0.4% SMS. Tail w/90 sx Type III cement w/1% calcium chloride, 1/4 pps cello-flake, and 0.2% FL-52 (651 cu.ft. of slurry, 50% excess to circulate to surface).

Note: If open hole logs are run, cement volumes will be based on 25% excess over caliper volumes.

BOP and tests:

Surface to TD - 11" 2000 psi (minimum double gate BOP stack (Reference Figure #1). Prior to drilling out surface casing, test rams to 600 psi/30 min.

Completion - 7 1/16" 2000 psi (minimum) double gate BOP stack (Reference Figure #2). Prior to completion operations, test rams and casing to 2000 psi/15 min.

From surface to TD - choke manifold (Reference Figure #3).

Pipe rams will be actuated to least once each day and blind rams actuated once each trip to test proper functioning. An upper kelly cock valve with handle and drill string safety valves to fit each drill string will be maintained and available on the rig floor.

BOP and tests (If a coiled tubing drilling (CTD) rig is utilized.):

Surface to TD: 7-1/16" 2000 psi (minimum) Torus annular BOP stack (Reference Figure #1b). Prior to drilling out surface casing, test annular BOP to 600psi/30 min.

Completion: 7-1/16" 2000 psi (minimum) double gate BOP stack (Reference Figure #2). Prior to completion operations, test blind rams and casing to 1500 psi for 30 minutes; all pipe rams and casing to 1500 psi for 30 minutes each. **Same as in original APD operations plan.**

From surface to TD: choke manifold (Reference Figure #3). **Same as in original APD operations plan.**

The annular BOP will be actuated to close on drill pipe (coiled tubing) at least once each day and to close on open hole once each trip to test proper functioning.

Additional information:

- * The Pictured Cliffs formation will be completed.
- * Anticipated pore pressure for the Pictured Cliffs is 500 psi.
- * This gas is dedicated.
- * The southeast quarter of Section 27 is dedicated to the Pictured Cliffs.

Sean F. Longan
Drilling Engineer

June 17, 2002
Date