

submitted in lieu of Form 3160-5

UNITED STATES
DEPARTMENT OF THE INTERIOR
BUREAU OF LAND MANAGEMENT

Sundry Notices and Reports on Wells

1. Type of Well

GAS

2. Name of Operator

MERIDIAN OIL

3. Address & Phone No. of Operator

PO Box 4289, Farmington, NM 87499 (505) 326-9700

4. Location of Well, Footage, Sec., T, R, M

1500'FNL, 1500'FEL, Sec.4, T-31-N, R-9-W, NMPM

5. Lease Number
SF-080133

6. If Indian, All. or
Tribe Name

7. Unit Agreement Name

San Juan 32-9 Unit

8. Well Name & Number
San Juan 32-9 U #46

9. API Well No.
30-045-60251

10. Field and Pool
Blanco Mesaverde

11. County and State
San Juan Co, NM

12. CHECK APPROPRIATE BOX TO INDICATE NATURE OF NOTICE, REPORT, OTHER DATA

Type of Submission

Type of Action

<input checked="" type="checkbox"/> Notice of Intent	<input type="checkbox"/> Abandonment	<input type="checkbox"/> Change of Plans
<input type="checkbox"/> Subsequent Report	<input type="checkbox"/> Recompletion	<input type="checkbox"/> New Construction
<input type="checkbox"/> Final Abandonment	<input type="checkbox"/> Plugging Back	<input type="checkbox"/> Non-Routine Fracturing
	<input type="checkbox"/> Casing Repair	<input type="checkbox"/> Water Shut off
	<input type="checkbox"/> Altering Casing	<input type="checkbox"/> Conversion to Injection
	<input checked="" type="checkbox"/> Other - Pay add	

13. Describe Proposed or Completed Operations

It is intended to repair the subject well and add pay to the Mesaverde zone according to the attached procedure and wellbore diagram.

RECEIVED
DEC 15 1994

OIL CON. DIV.
DIST. 3

UNITED STATES DEPARTMENT OF THE INTERIOR
BUREAU OF LAND MANAGEMENT
SANDY SPRING, NM
DEC 15 1994 11:28

14. I hereby certify that the foregoing is true and correct.

Signed *Jerry S. ...* (MEL5) Title Regulatory Affairs Date 12/6/94

(This space for Federal or State Office use)

APPROVED BY _____ Title _____ Date _____

CONDITION OF APPROVAL, if any:

APPROVED
DEC 09 1994

REGULATORY MANAGEMENT

NMCO

Pertinent Data Sheet - San Juan 32-9 Unit #46

Location: 1500' FNL, 1500' FEL, Unit G, Section 04, T31N, R09W, San Juan County, New Mexico

Field: Blanco Mesaverde

Elevation: 6610' GL
6620' DF

TD: 5985'
COTD: 5930'

Completed: 11-26-56

DP #: 69897

Casing Record:

<u>Hole Size</u>	<u>Csq Size</u>	<u>Wt. & Grade</u>	<u>Depth Set</u>	<u>Cement</u>	<u>Top/Cement</u>
13 3/4"	10 3/4"	32.75# SW	172'	125 sxs	Surface/Circ
9 5/8"	7 5/8"	26.4# J-55	3782'	300 sxs	TOC @ 2705' TS
6 3/4"	5 1/2"	15.5# J-55	5981'	300 sxs	TOC @ 4240' TS

Tubing Record:

<u>Tbg Size</u>	<u>Wt. & Grade</u>	<u>Depth Set</u>
2 3/8"	4.7# J-55	5900'

Formation Tops:

Ojo Alamo:	1678'	Chacra:	4240'
Kirtland:	1804'	Cliffhouse:	5018'
Fruitland:	3100'	Menefee:	5432'
Pictured Cliffs:	3457'	Point Lookout:	5737'
Huerfano Bentonite:	4200'		

Logging Record: GR, Neut., Tracer, Temp Survey

Stimulation:

Perf'd: 5398'-5412', 5422'-5434', 5750'-5760', 5770'-5780', 5806'-5818',
5828'-5840', 5880'-5890', 5902'-5912' w/4 SPF
Frac'd: 40,000# sand & 62,300 gal water. Dropped 115 balls.

Workover History:

Production History:


Transporter: EPNG

San Juan 32-9 Unit #46 - Mesaverde
Menefee Payadd/Intermediate Flow Repair
Lat-Long by GITI: 36.929749 - 107.780869
NE/4 Section 4, T31N-R9W
November 15, 1994
Revised

1. Hold safety meeting. MIRU. Install safety equipment and fire extinguishers in strategic locations. Install 6x400 bbl frac tanks and 1x400 bbl rig tank. Fill each frac tank with 5#'s of biocide and filtered (25 micron) 2% KCl water.
2. Obtain and record all wellhead pressures. ND WH, NU BOP. TOOH with 2 3/8" tubing set at 5900'. Replace bad tubing as needed.
3. Pick up 4-3/4" bit and 5-1/2" 15.5# casing scraper and TIH. Make scraper run to PBTD of 5930'. TOOH. Lay down casing scraper and bit.
4. RU wireline and run TDT/GR from TD (5985') to 4985'. Send copy of TDT/GR to engineering and perforation intervals will be provided.
5. PU 5-1/2" RBP and wireline set RBP @ 5385'. Dump sand on top of RBP with dump bailer. Pressure test RBP to 1000 psi.
6. Load hole with fresh water and pressure test casing to 1000 psi. Run CBL-CCL-GR and noise log from 5385' to surface w/ 1000# of pressure. RD wireline. Send copy of CBL and noise log to engineering and a squeeze procedure will be provided. If necessary, cut 5-1/2" casing above TOC and pull. Locate and squeeze 7" failure.
7. After squeeze work, TIH w/ bit and tubing and drill out cement. Obtain 700 psi pressure test and resqueeze if necessary. TOOH w/ tubing and bit. TIH w/ retrieving head. Latch onto RBP, release RBP and TOOH.
8. PU 5-1/2" RBP and wireline set @ 5725'. Dump sand on top of RBP w/ dump bailer.
9. Perforate the Menefee interval according to procedure (determined from TDT log) under balanced w/ 1000' of hydrostatic using 0.30" diameter holes and 3-1/8" HSC guns. Inspect guns to ensure all perforations fired.
10. TIH w/ 2-3/8" tubing to 5715' and set packer. Pressure test tubing and BP to 3600 psi. Release packer and PUH to 5450'. Set packer @ 5450'. Balloff Menefee perforations with 1500 gallons of 15% HCl acid and RCN balls (2 balls per perforation hole). Maximum allowable treating pressure is 3600 psi. Release packer, TIH and knock balls off. TOOH.
11. TIH with an "F" nipple on the bottom of a 5-1/2" X 3-1/2" (N-80 turned down collars) frac liner and set across the Cliff House formation from 5380' to 5450' (total of 70'). Run the frac liner (two Baker hydraulically set packers) on 3-1/2" fracstring. Drop blanking plug and set packers. Attempt to load annulus through casing valves and pressure test tubing to 5000 psi. Retrieve blanking plug with slick line. SI well for 24 hours with an Amerada pressure bomb set at 5565'. Have BHP information sent to engineering within 24 hours.
12. Install 5000# frac valve on top of the 3-1/2" fracstring.
13. RU BJ Services. Hold safety meeting. Test surface lines to 6000 psi. **Maximum surface treating pressure is 5000 psi.** Fracture Menefee according to attached procedure. Shut in well immediately after completion of the stimulation until pressure falls to zero. RD frac company.
14. Remove frac valve. Release packers and TOOH, laying down frac string. Lay down packers.

15. SI well for 3 hours after stimulation to allow gel to break then flow-back naturally as long as possible. When either flow has ceased or returns have reached a level allowing re-entry of the wellbore, TIH with 2-3/8" tubing with notched collar. CO to PBTD of 5725'. PU above the Mesaverde perforations and flow the well naturally, making short trips for clean up when necessary.
16. When returns have diminished (both sand and water), TOOH. PU 5-1/2" packer and TIH with 2 3/8" tubing. Set packer @ 5450'. Flow test the Menefee for 3 hours. Report the results to engineering before proceeding. Release packer and TOOH.
17. PU retrieving head and TIH. Clean out to PBTD. Release RBP @ 5725' and TOOH.
18. TIH with tubing and clean out to PBTD of 5930'. When water rates and sand production have diminished, TOOH.
19. RU wireline company. Run after - frac GR. RD wireline company.
20. TIH with one joint of 2 3/8" tubing w/ expendable check, an F-nipple, then the remaining 2 3/8" tubing. CO to PBTD (5930'). Land tubing at 5920'.
21. ND BOP's, NU WH. Pump off expendable check. Obtain final pitot. RDMO. Return well to production.

Approval:



Drilling Superintendent

Vendors:

Stimulation - BJ Services (327-6222)
Tools - Baker Tools (325-0216)
Perforating - Blue Jet (325-5584)

Contacts:

Engineering - Mary Ellen Lutey
Office - (599-4052)
Home - (325-9387)

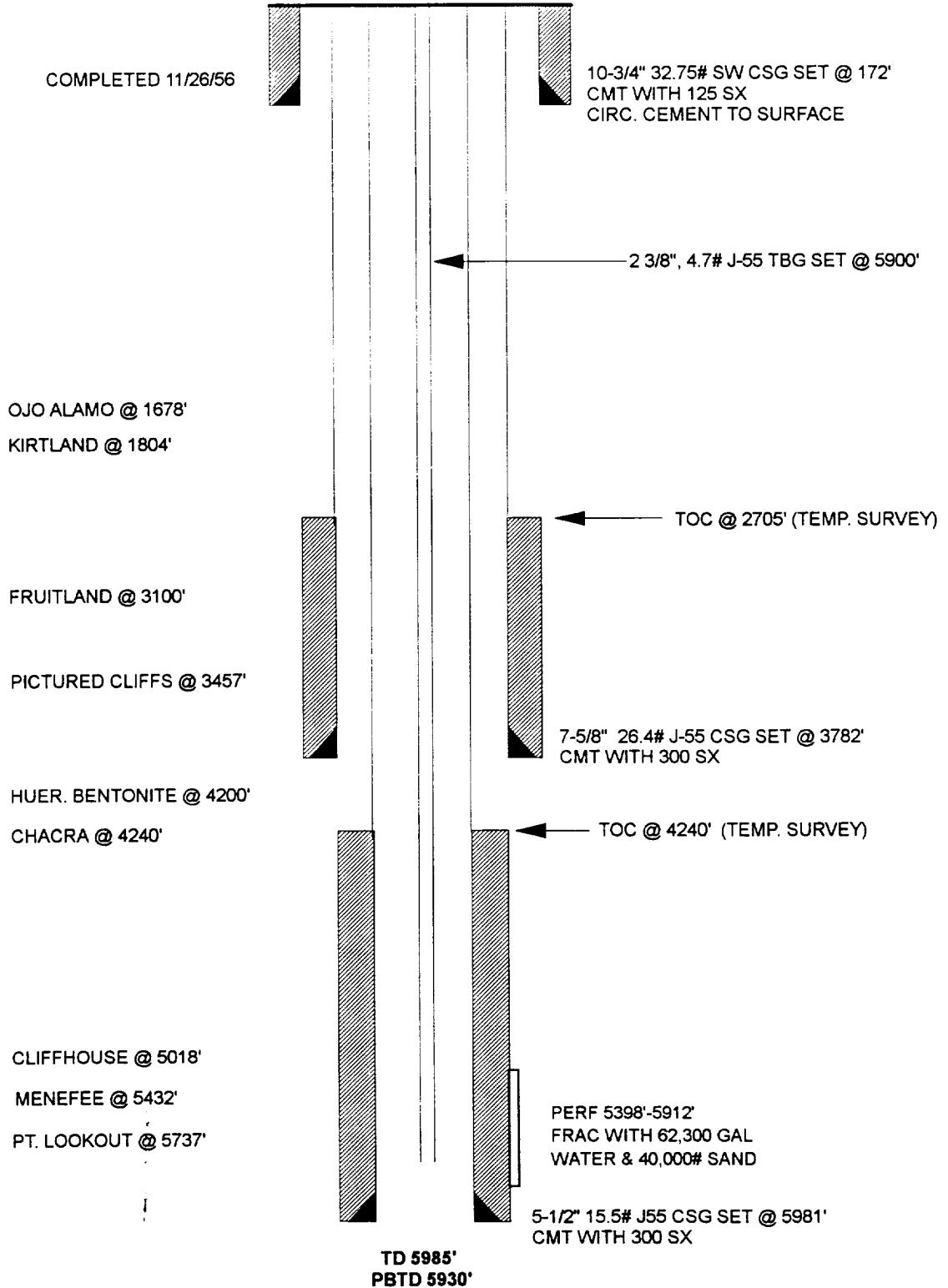
Frac Consultant - Mark Byars
Pager - (327-8470)
Mobile - (320-0349)
Home - (327-0096)
or Mike Martinez
Pager - (599-7429)
Mobile - (860-7518)
Home - (326-4861)

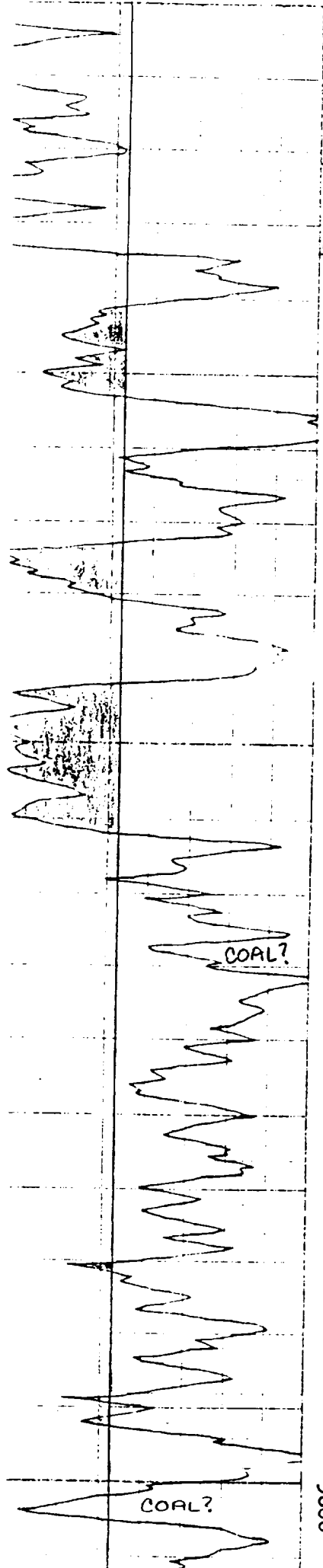
SAN JUAN 32-9 UNIT #46

BLANCO MESAVERDE

UNIT G, SEC 4, T31N, R09W, SAN JUAN COUNTY, NM

AS OF 5/1/94





San Juan 32-9 #46

00

5500

5600

MEDEFEE

