

NUMBER OF COPIES RECEIVED	1
DATE RECEIVED	11-2-64
FILE	
CLASS	
TRANSFERRED	
THROUGHLINE	
OPERATION	

# NEW MEXICO OIL CONSERVATION COMMISSION Santa Fe, New Mexico

Form C-101  
Revised (12/1/55)

## NOTICE OF INTENTION TO DRILL

Notice must be given to the District Office of the Oil Conservation Commission and approval obtained before drilling or recompletion begins. If changes in the proposed plan are considered advisable, a copy of this notice showing such changes will be returned to the sender. Submit this notice in **QUINTUPLICATE**. One copy will be returned following approval. See additional instructions in Rules and Regulations of the Commission. **If State Land submit 5 Copies Attach Form C- 128 in triplicate to first 3 copies of form C-101**

Aztec, New Mexico  
(Place)

10-30-64  
(Date)

OIL CONSERVATION COMMISSION  
SANTA FE, NEW MEXICO

Gentlemen:

You are hereby notified that it is our intention to commence the Drilling of a well to be known as  
**Tex-Star Oil & Gas Corp.**

Horace Smith

(Company, or Operator)

, Well No. 1, in P The well is  
(Lease) (Unit)

located 990 feet from the South line and 990 feet from the  
East line of Section 26, T. 30 N, R. 14 W, NMPM.

(GIVE LOCATION FROM SECTION LINE) Basin Dakota Pool, San Juan County

If State Land the Oil and Gas Lease is No.

If patented land the owner is Horace W. Smith

Address % Exchange Natl. Bank, Colorado Springs, Colorado

We propose to drill well with drilling equipment as follows: Rotary

The status of plugging bond is Blanket

Drilling Contractor

We intend to complete this well in the Dakota  
formation at an approximate depth of 6200 feet.

### CASING PROGRAM

We propose to use the following strings of Casing and to cement them as indicated:

Size of Hole	Size of Casing	Weight per Foot	New or Second Hand	Depth	Bags Cement
Adequate	8-5/8"	20#	New	250'	Circulated to surface
7-7/8"	4-1/2"	10.50#	New	6200'	150

If changes in the above plans become advisable we will notify you immediately.

ADDITIONAL INFORMATION (If recompletion give full details of proposed plan of work.)



Approved 11-2-64, 1964

Except as follows:

*Mesaverde Formation must be covered with cement behind casing*

OIL CONSERVATION COMMISSION

By Curry, Charles

Sincerely yours,

TEX-STAR OIL & GAS CORP.

(Company or Operator)

By James O. Cleveland

Position Engineer

Send Communications regarding well to

Name Tex-Star Oil & Gas Corp.

Address 2520 Fidelity Union Tower Dallas 1,

## NEW MEXICO OIL CONSERVATION COMMISSION

Well Location and Acreage Dedication Plat

Section A.

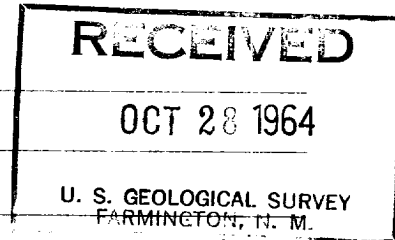
Date **October 16, 1964**

Operator **TEX-STAR OIL & GAS CORPORATION** Lease **Horace Smith**  
 Well No. \_\_\_\_\_ Unit Letter **P** Section **26** Township **30 NORTH** Range **14 WEST** NMPM  
 Located **990** Feet From **the SOUTH** Line **990** Feet From **the EAST** Line  
 County **San Juan** G. L. Elevation **5568'** Dedicated Acreage **320** Acres  
 Name of Producing Formation **Dakota** Pool **Basin Dakota**

1. Is the Operator the only owner in the dedicated acreage outlined on the plat below?

Yes \_\_\_\_\_ No **X**2. If the answer to question one is "no", have the interests of all the owners been consolidated by communitization agreement or otherwise? Yes **\*** No \_\_\_\_\_. If answer is "yes", Type of Consolidation.**\*Presently Being Filed**

3. If the answer to question two is "no", list all the owners and their respective interests below:

OwnerLand Description

Section B.

Note: All distances must be from outer boundaries of section.

This is to certify that the information in Section A above is true and complete to the best of my knowledge and belief.

**Tex-Star Oil & Gas Corp.**

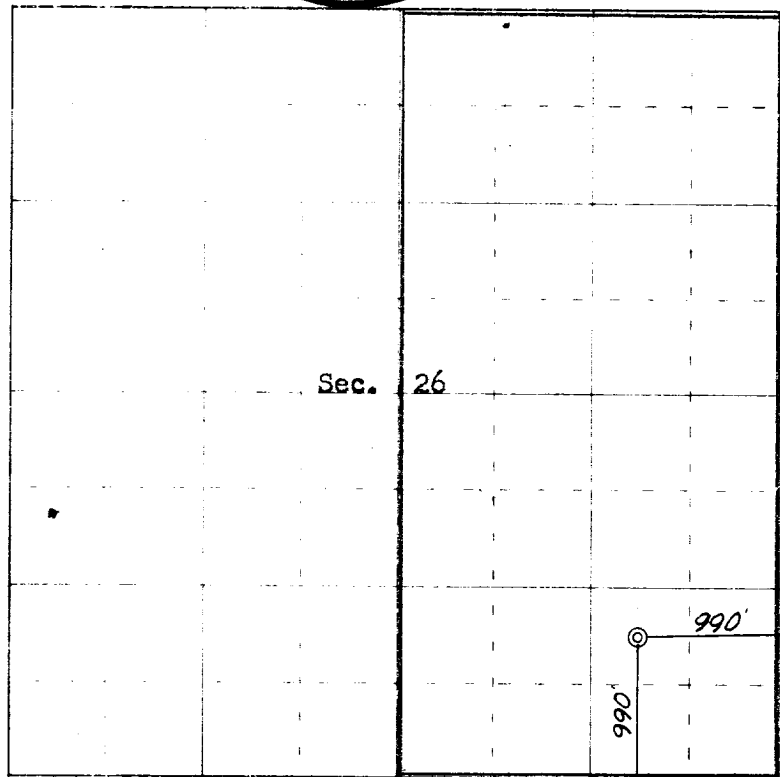
(Operator)

*James O. Cleveland*

(Representative)

**2520 Fidelity Union Tower**

(Address)

**Dallas, Texas**

0 330 660 990 1320 1650 1980 2310 2640 2000 1500 1000 500 0

Scale 4 inches equal 1 mile

This is to certify that the above plat was prepared from field notes of actual surveys made by me or under my supervision and that the same are true and correct to the best of my knowledge and belief.

(Seal)

Date Surveyed **October 14, 1964**

Farmington, New Mexico

*James P. Lecse*  
 Registered Professional Engineer and/or Land Surveyor  
 James P. Lecse, N. Mex. Reg. No. 1463