

Form 3160-3  
(November 1983)  
(formerly 9-331C)SUBMIT IN TRIPPLICATE\*  
(Other instructions on  
reverse side)Form approved.  
Budget Bureau No. 1004-0136  
Expires August 31, 1985UNITED STATES  
DEPARTMENT OF THE INTERIOR  
BUREAU OF LAND MANAGEMENT

## APPLICATION FOR PERMIT TO DRILL, DEEPEN, OR PLUG BACK

## 1A. TYPE OF WORK

DRILL ☒DEEPEN ☐PLUG BACK ☐

## B. TYPE OF WELL

OIL  
WELL ☐GAS  
WELL ☒

OTHER

SINGLE  
ZONE ☒MULTIPLE  
ZONE ☐

## 2. NAME OF OPERATOR

JEROME P. McHUGH

## 3. ADDRESS OF OPERATOR

P O Box 809, Farmington, NM 87499

## 4. LOCATION OF WELL (Report location clearly and in accordance with any State requirements.)\*

At surface

990' FSL - 790' FWL

At proposed prod. zone

## 14. DISTANCE IN MILES AND DIRECTION FROM NEAREST TOWN OR POST OFFICE\*

33 miles NE of Gobernador, NM

## 15. DISTANCE FROM PROPOSED\*

LOCATION TO NEAREST  
PROPERTY OR LEASE LINE, FT.  
(Also to nearest drlg. unit line, if any)

790'

## 16. NO. OF ACRES IN LEASE

2522.12

17. NO. OF ACRES ASSIGNED  
TO THIS WELL

320.0

18. DISTANCE FROM PROPOSED LOCATION\*  
TO NEAREST WELL, DRILLING, COMPLETED,  
OR APPLIED FOR, ON THIS LEASE, FT.

1 1/2 mile

## 19. PROPOSED DEPTH

9000'

## 20. ROTARY OR CABLE TOOLS

Rotary

## 21. ELEVATIONS (Show whether DF, RT, GR, etc.)

7201' GL

DRILLING OPERATIONS AUTHORIZED ARE

23. SUBJECT TO COMPLIANCE WITH ATTACHED  
"GENERAL REQUIREMENTS"

PROPOSED CASING AND CEMENTING PROGRAM

## 22. APPROX. DATE WORK WILL START\*

August 1987

This action is subject to technical and  
procedural review pursuant to 43 CFR 3165.3,  
and appeal pursuant to 43 CFR 3165.4.

SIZE OF HOLE	SIZE OF CASING	WEIGHT PER FOOT	SETTING DEPTH	QUANTITY OF CEMENT
12-1/4"	9-5/8"	36	250'	150 cu.ft. circ. to surf.
7-7/8"	5-1/2"	15.5 & 17	9000'	2295 cu.ft. to surf. in 3 stages

Plan to drill with spud mud to set 250' of surface casing. Will then drill with water and gel-chem. mud to test the Dakota Formation at TD of 9000'. Will run DIL-GR-SP and FDC-CNL-GR-Caliper logs. If well appears productive, will set 5 1/2" casing at TD and cement in 3 stages. Will selectively perforate, frac, clean out after frac and complete well using 2-7/8" tubing.

Gas is not dedicated.

RECEIVED  
AUG 26 1987OIL CON. DIV.  
DIST. 1

IN ABOVE SPACE DESCRIBE PROPOSED PROGRAM: If proposal is to deepen or plug back, give data on present productive zone and proposed new productive zone. If proposal is to drill or deepen directionally, give pertinent data on subsurface locations and measured and true vertical depths. Give blowout preventer program, if any.

24.

SIGNED

James S. Hazen

TITLE

Field Supt.

DATE

8/12/87

(This space for Federal or State office use)

PERMIT NO.

APPROVAL DATE

APPROVED BY

TITLE

DATE

CONDITIONS OF APPROVAL, IF ANY:

APPROVED  
AS AMENDEDAUG 21 1987  
/s/ J. Stan McKee

NMCCC

\*See Instructions On Reverse Side

FOR AREA MANAGER

## OIL CONSERVATION DIVISION

STATE OF NEW MEXICO  
ENERGY AND MINERALS DEPARTMENT

P. O. BOX 2088

SANTA FE, NEW MEXICO 87501

Form C-102  
Revised 10-1-78

All distances must be from the outer boundaries of the Section.

Operator Jerome P. McHugh			Lease Carracas Unit 35 B			Well No. 13		
Unit Letter M	Section 35	Township 32 North	Range 4 West	County Rio Arriba				
Actual Postage Location of Well:								
990 feet from the		South	line and	790 feet from the		West	line	
Ground Level Elev. 7201	Producing Formation Dakota		Pool Basin Dakota			Dedicated Acreage: 320.0 Acres		

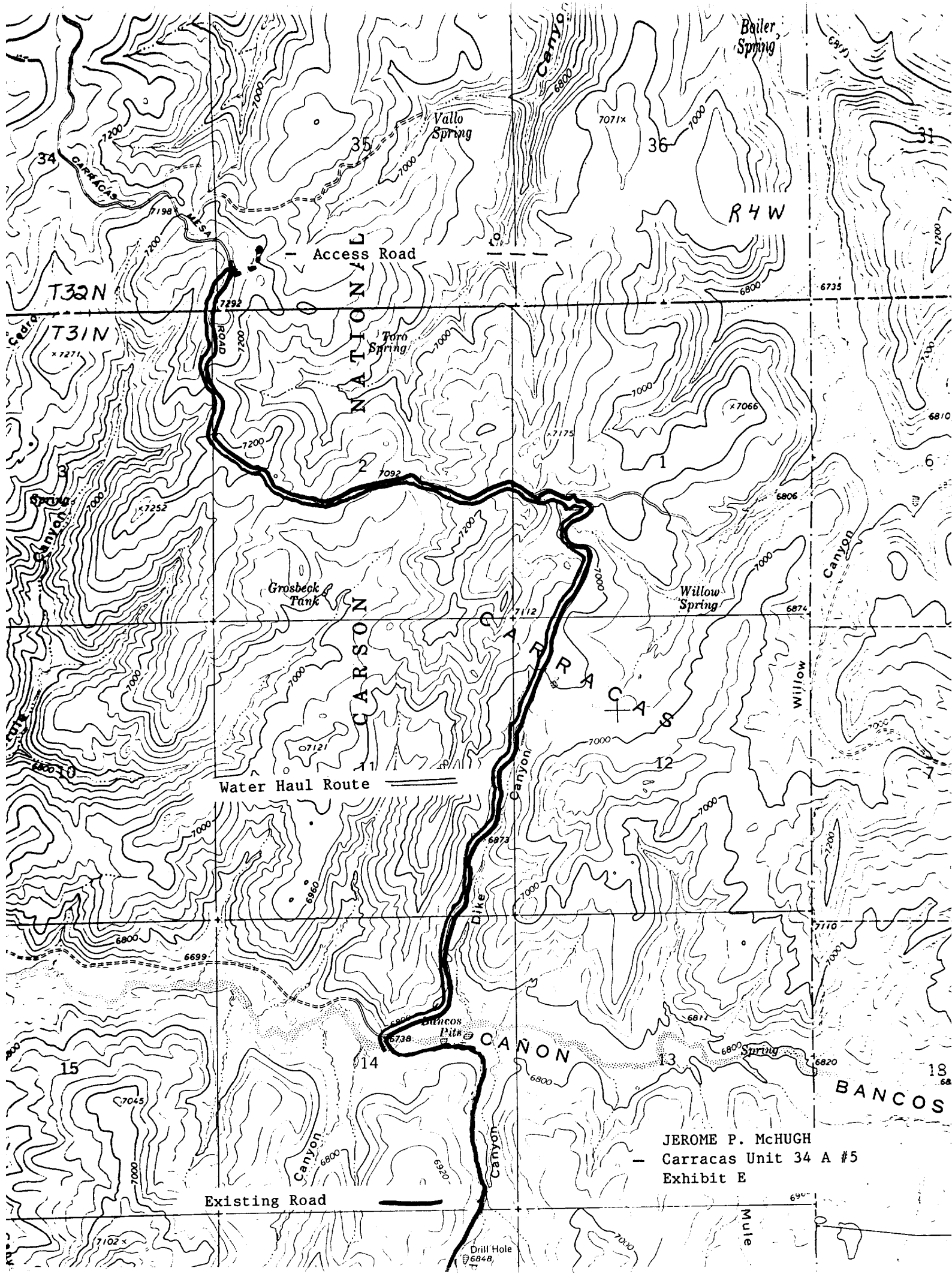
1. Outline the acreage dedicated to the subject well by colored pencil or hatchure marks on the plat below.
2. If more than one lease is dedicated to the well, outline each and identify the ownership thereof (both as to working interest and royalty).
3. If more than one lease of different ownership is dedicated to the well, have the interests of all owners been consolidated by communitization, unitization, force-pooling, etc? N/A

☐ Yes ☐ No If answer is "yes," type of consolidation \_\_\_\_\_

If answer is "no," list the owners and tract descriptions which have actually been consolidated. (Use reverse side of this form if necessary.) \_\_\_\_\_

No allowable will be assigned to the well until all interests have been consolidated (by communitization, unitization, forced-pooling, or otherwise) or until a non-standard unit, eliminating such interests, has been approved by the Division.

NM 28812 Amoco Prod. Corp. 100%		SEC. 35		RECEIVED AUG 26 1987 OIL CON. DIV. DIST.		CERTIFICATION  I hereby certify that the information contained herein is true and complete to the best of my knowledge and belief.	
790'		990'		790'		Name James S. Hazen Position Field Supt. Company JEROME P. McHUGH Date 8/12/87	
790'		990'		790'		I, EDGAR L. RISENHOVER, Registered Professional Engineer and/or Land Surveyor, certify that the well location shown on this plat was plotted from field notes of actual surveys made by me or under my supervision, and that the same is true and correct to the best of my knowledge and belief.	
790'		990'		790'		Date Surveyed June 12, 1987 Registered Professional Engineer and/or Land Surveyor Edgar L. Risenhoover Certificate No. 5979 Edgar L. Risenhoover, L.S.	



JEROME P. McHUGH  
- Carracas Unit 34 A #5  
Exhibit E