

UNITED STATES
DEPARTMENT OF THE INTERIOR
BUREAU OF LAND MANAGEMENT

APPLICATION FOR PERMIT TO DRILL, DEEPEN OR PLUG BACK

1a. TYPE OF WORK

DRILL ☒

DEEPEN ☐

PLUG BACK ☐

b. TYPE OF WELL

OIL
WELL ☐

GAS
WELL ☐

OTHER

2. NAME OF OPERATOR

NASSAU RESOURCES, INC. 15515

3. ADDRESS OF OPERATOR

P.O. Box 809, Farmington, N.M. 87499

4. LOCATION OF WELL (Report location clearly and in accordance with any State requirements.)*

At surface

1100' FSL - 790' FWL

At proposed prod. zone

14. DISTANCE IN MILES AND DIRECTION FROM NEAREST TOWN OR POST OFFICE*

± 32 miles NE of Gobernador, N.M.

15. DISTANCE FROM PROPOSED*

LOCATION TO NEAREST

PROPERTY OR LEASE LINE, FT.

(Also to nearest drlg. unit line, if any)

790'

18. DISTANCE FROM PROPOSED LOCATION*

TO NEAREST WELL, DRILLING, COMPLETED,

OR APPLIED FOR, ON THIS LEASE, FT.

2-2/3 Miles

16. NO. OF ACRES IN LEASE

2,522.12

19. PROPOSED DEPTH

3750'

17. NO. OF ACRES ASSIGNED
TO THIS WELL

20. ROTARY OR CABLE TOOLS

Rotary

21. ELEVATIONS (Show whether DF, RT, GR, etc.)

7045' GL; 7057' KB

DRILLING OPERATIONS AUTHORIZED ARE
SUBJECT TO COMPLIANCE WITH ATTACHED

22. APPROX. DATE WORK WILL START*

9/88

23. "GENERAL REQUIREMENTS"
PROPOSED CASING AND CEMENTING PROGRAM

This action is subject to technical and
procedural review pursuant to 43 CFR 3165.3
and appeal pursuant to 43 CFR 3165.4.

SIZE OF HOLE	SIZE OF CASING	WEIGHT PER FOOT	SETTING DEPTH
12-1/4"	9-5/8"	36#	250'
7-7/8"	5-1/2"	15.5#	3750'

150 cu.ft. circ. to surface.
812 cu.ft. circ. to surface.

Plan to drill with spud mud to set 250' of surface casing. Will then drill with water and gel-chem. mud to test the Fruitland coal zone at ± 3750'. Will run DIL-GR-SP and FDC-CNL-GR Caliper logs. If well appears productive, will set 5-1/2" casing at TD, cement in 1 stage, selectively perforate, frac, clean out after frac and complete with 2-7/8" tubing.

GAS IS NOT DEDICATED.

RECEIVED

AUG 14 1989

OIL CON. DIV.
DIST. 3

IN ABOVE SPACE DESCRIBE PROPOSED PROGRAM: If proposal is to deepen or plug back, give data on present productive zone and proposed new productive zone. If proposal is to drill or deepen directionally, give pertinent data on subsurface locations and measured and true vertical depths. Give blowout preventer program, if any.

24.

SIGNED

James S. Hazen

TITLE

Field Supt.

DATE

8/17/88

(This space for Federal or State office use)

PERMIT NO.

APPROVAL DATE

APPROVED BY

TITLE

CONDITIONS OF APPROVAL, IF ANY:

APPROVED
AS AMENDED

AUG 10 1989

AREA MANAGER

*See Instructions On Reverse Side

STATE OF NEW MEXICO
ENERGY AND MINERALS DEPARTMENT

SANTA FE, NEW MEXICO 87501

Form C-102
Revised 10-1-78

Operator Nassau Resources, Inc.		Lease Carracas Unit 26 B		Well No. 13
Unit Letter M	Section 26	Township 32 North	Range 4 West	County Rio Arriba
Actual Footage Location of Well: 1100 feet from the South line and 790 feet from the West line				
Ground Level Elev. 7045	Producing Formation Fruitland	Pool Basin Fruitland Coal	Dedicated Acreage: 320.0 Acres	

- ☒ Yes ☐ No If answer is "yes," type of consolidation Unitization - Carracas Unit

If answer is "no," list the owners and tract descriptions which have actually been consolidated. (Use reverse side of this form if necessary.) _____

No allowable will be assigned to the well until all interests have been consolidated (by communitization, unitization, forced-pooling, or otherwise) or until a non-standard unit, eliminating such interests, has been approved by the Division.

NM 28812
Amoco Production Co. 100%

SECTION 26

790' 1066'
1100'

RECEIVED
BLM MAIL ROOM
89 FEB -1 AM 9:19
FARMINGTON RESOURCE AREA
FARMINGTON, NEW MEXICO

I hereby certify that the information contained herein is true and complete to the best of my knowledge and belief.

Fran Perroni

Name _____

Fran Perrin

Position

Admin. Asst.

Company

Nassau Resources, Inc.

Date _____

1/31/89

I have reviewed the information shown on this document and field notes of Elvira, made by me or under my supervision, and that the same is true and correct to the best of my knowledge and belief.

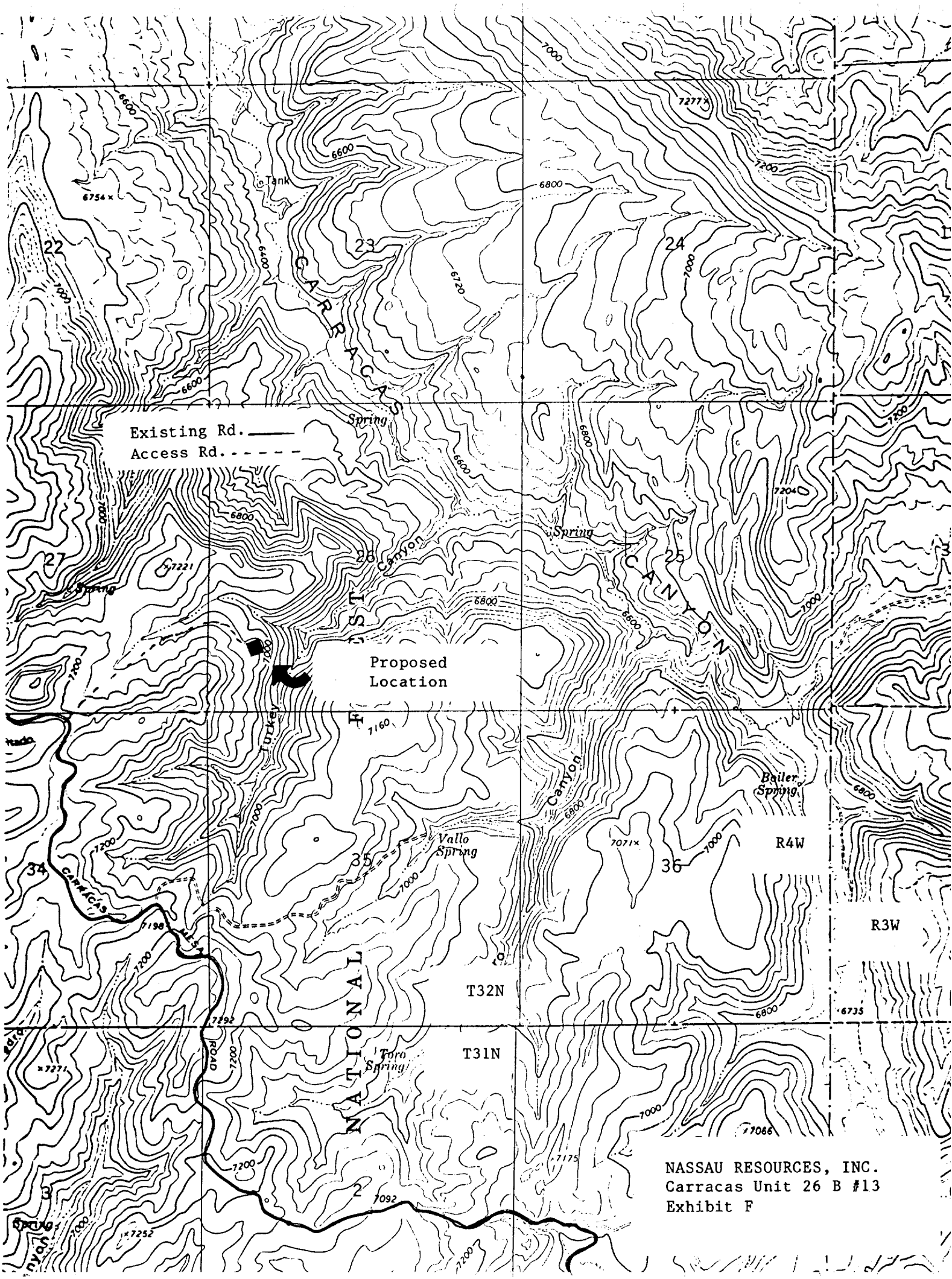
Date Surveyed _____

August 4, 1988

Registered Professional Engineer
and/or Land Surveyor

Edgar L. Rosenbloom

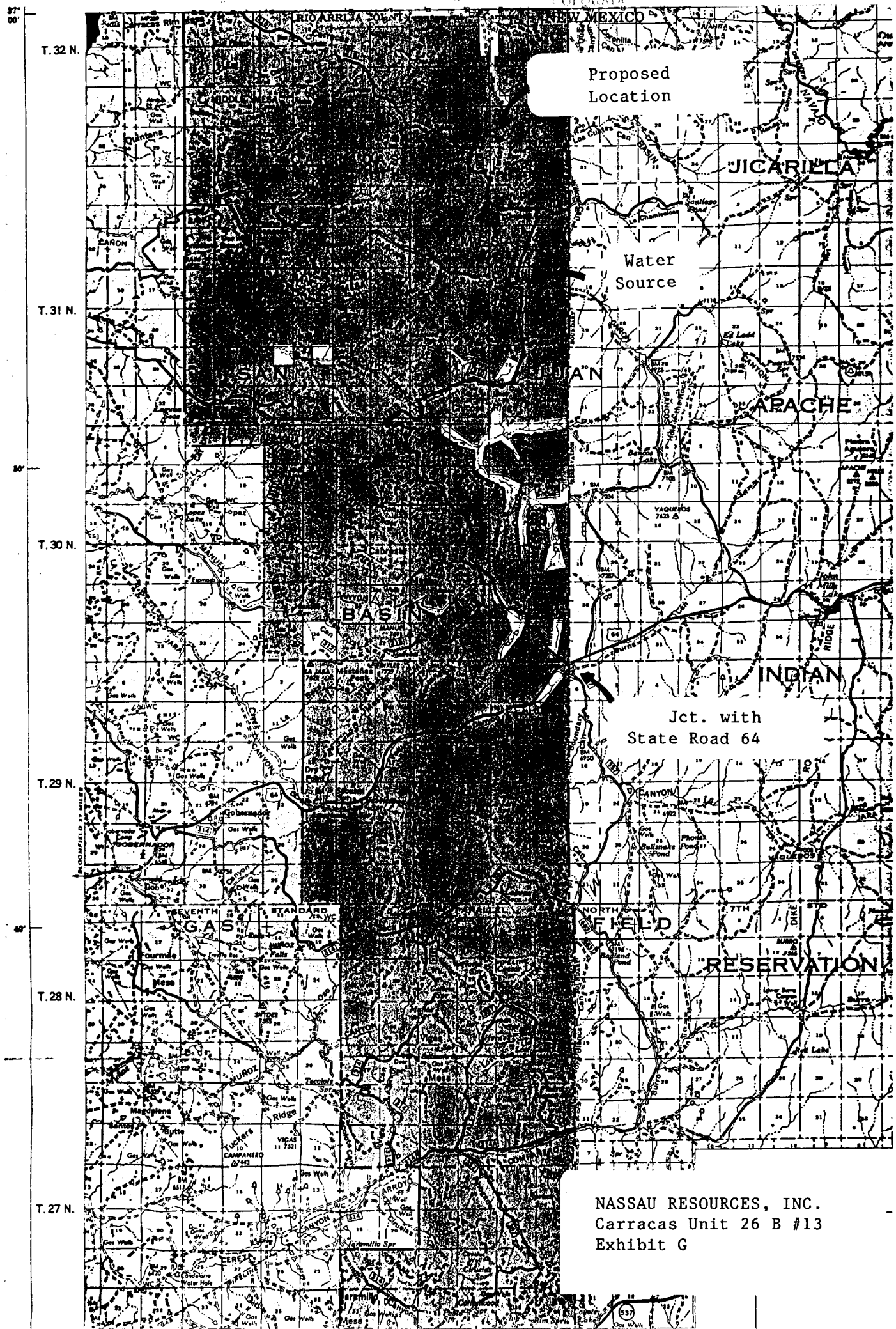
Certificate No. 5979



Existing Rd. ———
Access Rd. - - - - -

Proposed
Location

NASSAU RESOURCES, INC.
Carracas Unit 26 B #13
Exhibit F



Proposed
Location

Water
Source

Jct. with
State Road 64

NASSAU RESOURCES, INC.
Carracas Unit 26 B #13
Exhibit G