

UNITED STATES
DEPARTMENT OF THE INTERIOR
BUREAU OF LAND MANAGEMENT

APPLICATION FOR PERMIT TO DRILL OR DEEPEN

1a. TYPE OF WORK

DRILL ☒

DEEPEN ☐

b. TYPE OF WELL

OIL
WELL ☐

GAS
WELL ☒

OTHER

SINGLE
ZONE ☒

MULTIPLE
ZONE ☐

2. NAME OF OPERATOR

ENERGEN RESOURCES CORPORATION

162928

3. ADDRESS AND TELEPHONE NO.

2198 Bloomfield Highway; Farmington, NM 87401

4. LOCATION OF WELL (Report location clearly and in accordance with any State requirements.)

At surface

1805' FSL, 700' FEL

At proposed prod. zone

14. DISTANCE IN MILES AND DIRECTION FROM NEAREST TOWN OR POST OFFICE*

Eight (8) miles SE of Arboles, Colorado

15. DISTANCE FROM PROPOSED*

LOCATION TO NEAREST

PROPERTY OR LEASE LINE, FT.

(Also to nearest drilg. unit line, if any) 710'

16. NO. OF ACRES IN LEASE

964.81

17. NO. OF ACRES ASSIGNED
TO THIS WELL

345.59

18. DISTANCE FROM PROPOSED LOCATION*

TO NEAREST WELL, DRILLING, COMPLETED,

OR APPLIED FOR, ON THIS LEASE, FT. 2300'

19. PROPOSED DEPTH

6177'

20. ROTARY OR CABLE TOOLS

Rotary

21. ELEVATIONS (Show whether DF, RT, GR, etc.)

6355'

22. APPROX. DATE WORK WILL START*

23.

PROPOSED CASING AND CEMENTING PROGRAM

SIZE OF HOLE	GRADE, SIZE OF CASING	WEIGHT PER FOOT	SETTING DEPTH	QUANTITY OF CEMENT
12 1/4	9 5/8	32.3#	200'	130 cu. ft., circ. to surface
8 3/4	7	20#	3702'	835 cu. ft., circ. to surface
6 1/4	4 1/2	10.5#	3552'-6177'	404 cu. ft., circ. liner

Selectively perforate and sand water fracture the Mesaverde.

This gas is dedicated.

A Williams Field Service Pipeline ROW Plat is attached.

This action is subject to technical and
procedural review pursuant to 43 CFR 3165.3
and appeal pursuant to 43 CFR 3165.4.

DRILLING OPERATIONS AUTHORIZED ARE
SUBJECT TO COAL LANDS WITH ATTACHED
GENERAL REQUIREMENTS

IN ABOVE SPACE DESCRIBE PROPOSED PROGRAM: If proposal is to deepen, give data on present productive zone and proposed new productive zone. If proposal is to drill or deepen directionally, give pertinent data on subsurface locations and measured and true vertical depths. Give blowout preventer program, if any.

24.

SIGNED

TITLE Production Superintendent

DATE

2/10/00

(This space for Federal or State office use)

PERMIT NO.

APPROVAL DATE

7-5-00

Application approval does not warrant or certify that the applicant holds legal or equitable title to those rights in the subject lease which would entitle the applicant to conduct operations thereon.

CONDITIONS OF APPROVAL, IF ANY:

APPROVED BY

Pres: Jim Corato

TITLE

DATE

7-5-00

*See Instructions On Reverse Side

Title 18 U.S.C. Section 1001, makes it a crime for any person knowingly and willfully to make to any department or agency of the United States any false, fictitious or fraudulent statements or representations as to any matter within its jurisdiction.

NR000

District I
PO Box 1980, Hobbs, NM 88241-1980

State of New Mexico
Energy, Minerals & Natural Resources Department

Form U-102
Revised February 21, 1994
Instructions on back
Submit to Appropriate District Office
State Lease - 4 Copies
Fee Lease - 3 Copies

District II
PO Drawer DD, Artesia, NM 88211-0719

OIL CONSERVATION DIVISION
PO Box 2088
Santa Fe, NM 87504-2088

District III
1000 Rio Brazos Rd., Aztec, NM 87410

District IV
PO Box 2088, Santa Fe, NM 87504-2088

☐ AMENDED REPORT

WELL LOCATION AND ACREAGE DEDICATION PLAT

*API Number 30-039-26365		*Pool Code 72319	*Pool Name Blanco Mesavende
*Property Code 21996	*Property Name SAN JUAN 32-5 UNIT		*Well Number 98
*GRID No. 162928	*Operator Name ENERGEN RESOURCES CORPORATION		*Elevation 6355

10 Surface Location

UL or lot no.	Section	Township	Range	Lot 10	Feet from the	North/South line	Feet from the	East/West line	County
I	31	32N	5W		1805	SOUTH	710	EAST	RIO ARriba

11 Bottom Hole Location If Different From Surface

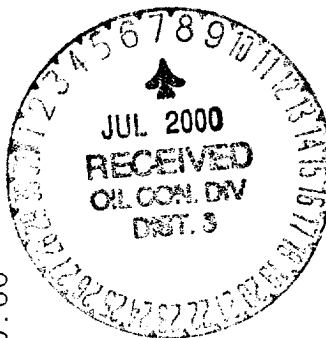
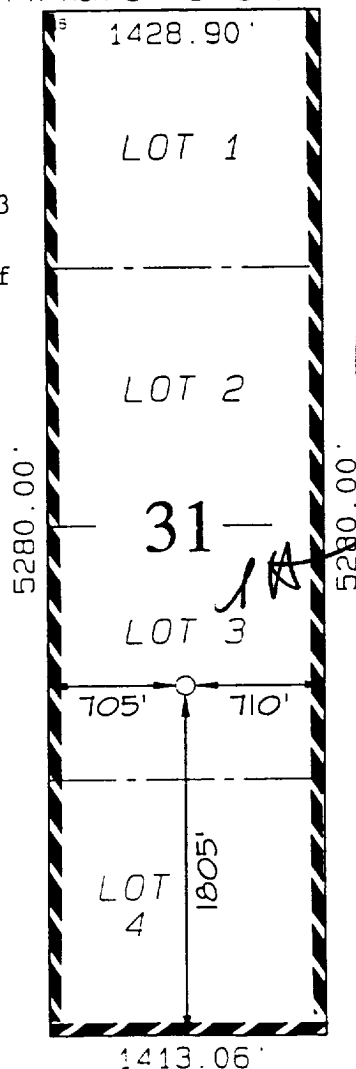
UL or lot no.	Section	Township	Range	Lot 10	Feet from the	North/South line	Feet from the	East/West line	County

12 Dedicated Acres 345.59	13 Joint or Infill	14 Consolidation Code	15 Order No.
------------------------------	--------------------	-----------------------	--------------

NO ALLOWABLE WILL BE ASSIGNED TO THIS COMPLETION UNTIL ALL INTERESTS HAVE BEEN CONSOLIDATED
OR A NON-STANDARD UNIT HAS BEEN APPROVED BY THE DIVISION

Includes Lots 1, 2, 3
and 4 of Sec. 31 and
Lots 1, 2, 3 and 4 of
Sec. 30

Unit per:
order # 2046



17 OPERATOR CERTIFICATION

I hereby certify that the information contained herein is true and complete to the best of my knowledge and belief.

Signature

Gary Brink

Printed Name

Production Superintendent

Title

2/10/00

Date

18 SURVEYOR CERTIFICATION

I hereby certify that the well location shown on this plat was plotted from field notes of actual surveys made by me or under my supervision and that the same is true and correct to the best of my belief.

NOVEMBER 12, 1999

Date of Survey

Signature and Seal of Registered Professional Surveyor

Certificate No. 6857

BOP SPECIFICATIONS:

An 11" 2000 psi minimum double gate BOP stack (Figure 1) will be used following nipple up of casing head. During air drilling operations, a Shaffer Type 50 or equivalent rotating head will be installed on top of the stack. A 2" nominal, 2000 psi minimum choke manifold will be used. An upper Kelly Cock valve with handle available and drill string valve to fit each drill string will be available on the rig floor during drilling operations.

CEMENTING:

9 5/8" surface casing - cement with 110 sks Class B Cement with 1/4" flocele/sk and 2% calcium chloride (130 cu. ft. of slurry, 100% excess to circulate to surface). WOC 12 hrs. Test casing to 600# for 30 minutes.

Texas Pattern Guide Shoe on bottom. 3 bow type centralizers spaced throughout the string.

7" intermediate casing – cement with 370 sks 65/35 Class B Poz with 6% gel, 2% calcium chloride, 10% gilsonite, and 1/4# flocele/sk. Tail with 100 sks Class B w/2% calcium chloride, 10% gilsonite and 1/4# flocele/sk. (835 cu. ft. of slurry, 50% excess to circulate to surface). WOC 12 hrs. If cement does not circulate, run temperature survey in 8 hrs. to determine TOC. Test casing to 1200 psi for 30 minutes.

Cement nose guide shoe on bottom with a self-fill insert float valve on top of shoe joint. 10 bow spring centralizers spaced every 2nd joint off bottom. Two turbolating centralizers at the base of the Ojo Alamo.

4 1/2" Production Liner

Cement with 320 sks 50/50 Poz with 2% gel, 5 PPS gilsonite, and .4% halad – 9 and 1/4# flocele/sk (404 cu. ft., 50% excess to tie into intermediate casing string). WOC 18 hrs. prior to completion.

Cement nose guide shoe on bottom with float collar on top of shoe joint. Liner hanger will have neopreme packoff on top.

OTHER INFORMATION:

- 1) The Blanco Mesa Verde will be completed.
- 2) No abnormal temperatures or pressures are anticipated.
- 3) Anticipated pore pressure for the Mesa Verde is 1000.
- 4) If lost circulation is encountered sufficient LCM will be added to the mud system to maintain well control.
- 5) This gas is dedicated.
- 6) Anticipated pore pressure for the Fruitland is 700 psi and the Pictured Cliffs is 800 psi.

ENERGEN RESOURCES CORPORATION SAN JUAN 32-5 UNIT #9B

1805' FSL & 710' FEL, SECTION 31, T32N, R5W, N.M.P.M.
RIO ARriba COUNTY, NEW MEXICO

