

UNITED STATES  
DEPARTMENT OF THE INTERIOR  
BUREAU OF LAND MANAGEMENT

FORM APPROVED  
Budget Bureau No. 1004-0135  
Expires: March 31, 1993

SUNDRY NOTICES AND REPORTS ON WELLS

Do not use this form for proposals to drill or to deepen or reentry to a different reservoir.

Use "APPLICATION FOR PERMIT - " for such proposals

SUBMIT IN TRIPLICATE

1. Type of Well

☐ Oil Well ☒ Gas Well ☐ Other

2. Name of Operator

ENERGEN RESOURCES CORPORATION

3. Address and Telephone No.

2198 Bloomfield Highway, Farmington, NM 87401

4. Location of Well (Footage, Sec., T., R., M., or Survey Description)

455' FSL, 1275' FEL, Sec. 19, T32N, R5W, N.M.P.M.

5. Lease Designation and Serial No.

SF-080657

6. If Indian, Allottee or Tribe Name

7. If Unit or CA, Agreement Designation

San Juan 32-5 Unit

8. Well Name and No.

San Juan 32-5 Unit 1R

9. API Well No.

30-039-26907

10. Field and Pool, or exploratory Area

Blanco Mesaverde

11. County or Parish, State

Rio Arriba NM

12. CHECK APPROPRIATE BOX(s) TO INDICATE NATURE OF NOTICE, REPORT, OR OTHER DATA

TYPE OF SUBMISSION

- ☐ Notice of Intent  
☒ Subsequent Report  
☐ Final Abandonment Notice

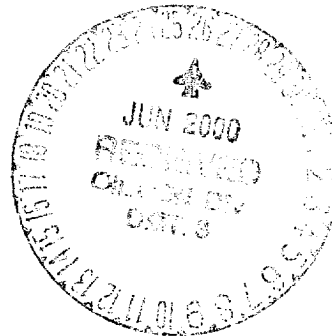
TYPE OF ACTION

- ☐ Abandonment  
☐ Recompletion  
☐ Plugging Back  
☐ Casing Repair  
☐ Altering Casing  
☒ Other Plat Change  
☐ Change of Plans  
☐ New Construction  
☐ Non-Routine Fracturing  
☐ Water Shut-Off  
☐ Conversion to Injection  
☐ Dispose Water

(Note: Report results of multiple completion on Well Completion or Recompletion Report and Log form.)

13. Describe Proposed or Completed Operations (Clearly state all pertinent details, and give pertinent dates, including estimated date of starting any proposed work. If well is directionally drilled, give subsurface locations and measured and true vertical depths for all markers and zones pertinent to this work.)

This well location was moved on 5-4-2000 per Bill Liese



14. I hereby certify that the foregoing is true and correct

Signed Monica Papp

Title Production Assistant

ACCEPTED FOR RECORD

Date 5/8/2000

(This space for Federal or State office use)

JUN 22 2000

Approved by

Title

Date 5/8/2000  
BY FARMINGTON FIELD OFFICE

Conditions of approval, if any:

Title 18 U.S.C. Section 1001, makes it a crime for any person knowingly and willfully to make to any department or agency of the United States any false, fictitious or fraudulent statements or representations as to any matter within its jurisdiction.

\* See Instruction on Reverse Side

NSL

District I  
PO Box 1980, Hobbs, NM 88241-1980

State of New Mexico  
Energy, Minerals & Natural Resources Department

Form C-102  
Revised February 21, 1994

District II  
PO Drawer DD, Artesia, NM 88211-0719

OIL CONSERVATION DIVISION  
PO Box 2088  
Santa Fe, NM 87504-2088

Submit to Appropriate District Office  
State Lease - 4 Copies  
Fee Lease - 3 Copies

District III  
1000 Rio Brazos Rd., Aztec, NM 87410

District IV  
PO Box 2088, Santa Fe, NM 87504-2088

200 MAY 12 11:12:02 ☐ AMENDED REPORT

WELL LOCATION AND ACREAGE DEDICATION PLAT

*API Number		*Pool Code 72319	*Pool Name Blanco Mesaverde
*Property Code	*Property Name SAN JUAN 32-5 UNIT		*Well Number 1R
*GRID No. 162928	*Operator Name ENERGEN RESOURCES CORPORATION		*Elevation 6398'

<sup>10</sup> Surface Location

UL or lot no. P	Section 19	Township 32N	Range 5W	Lot Idn	Feet from the 455	North/South line SOUTH	Feet from the 1275	East/West line EAST	County RIO ARriba
--------------------	---------------	-----------------	-------------	---------	----------------------	---------------------------	-----------------------	------------------------	----------------------

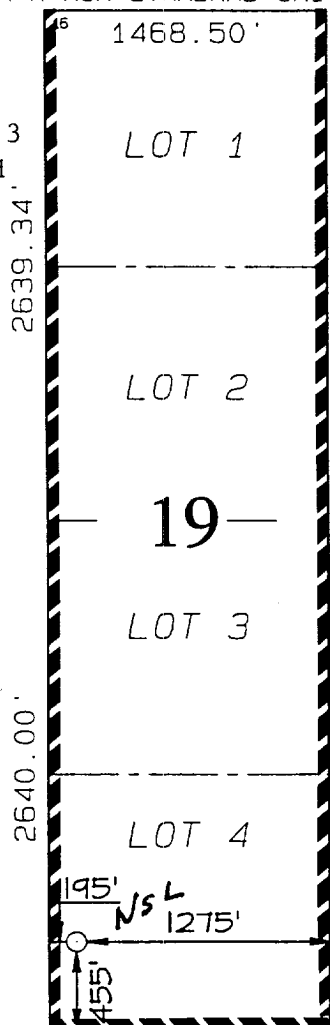
<sup>11</sup> Bottom Hole Location If Different From Surface

UL or lot no.	Section	Township	Range	Lot Idn	Feet from the	North/South line	Feet from the	East/West line	County
---------------	---------	----------	-------	---------	---------------	------------------	---------------	----------------	--------

<sup>12</sup> Dedicated Acres 355.25	<sup>13</sup> Joint or Infill	<sup>14</sup> Consolidation Code	<sup>15</sup> Order No.
---	-------------------------------	----------------------------------	-------------------------

NO ALLOWABLE WILL BE ASSIGNED TO THIS COMPLETION UNTIL ALL INTERESTS HAVE BEEN CONSOLIDATED  
OR A NON-STANDARD UNIT HAS BEEN APPROVED BY THE DIVISION

Includes Lots 1, 2, 3  
and 4 of Sec. 19 and  
Lots 1, 2, 3 and  
4 of Sec. 18



<sup>17</sup> OPERATOR CERTIFICATION

I hereby certify that the information contained herein is true and complete to the best of my knowledge and belief.

Signature

Gary Brink

Printed Name

Production Superintendent

Title

5/8/00

Date

<sup>18</sup> SURVEYOR CERTIFICATION

I hereby certify that the well location shown on this plat was plotted from field notes of actual surveys made by me or under my supervision, and that the same is true and correct to the best of my belief.

MAY 4, 2000

Date of Survey

Signature and Seal of Professional Surveyor

NEALE C. EDWARDS  
NEW MEXICO  
6857  
REGISTERED PROFESSIONAL SURVEYOR

Certificate Number 6857

455' FSL & 1275' FEL, SECTION 19, T32N, R5W, N.M.P.M.  
RIO ARRIBA COUNTY, NEW MEXICO

