

NEW MEXICO OIL CONSERVATION COMMISSION
Santa Fe, New Mexico

Form C-101
Revised (12/1/55)

NOTICE OF INTENTION TO DRILL

Notice must be given to the District Office of the Oil Conservation Commission and approval obtained before drilling or recompletion begins. If changes in the proposed plan are considered advisable, a copy of this notice showing such changes will be returned to the sender. Submit this notice in QUINTUPLICATE. One copy will be returned following approval. See additional instructions in Rules and Regulations of the Commission. If State Land submit 6 Copies Attach Form C- 128 in triplicate to first 3 copies of form C-101

Farmington, New Mexico

December 10, 1957

(Place)

(Date)

OIL CONSERVATION COMMISSION
SANTA FE, NEW MEXICO

Gentlemen:

You are hereby notified that it is our intention to commence the Drilling of a well to be known as

Pan American Petroleum Corporation

(Company or Operator)

Wallace Gas Unit

(Lease)

Well No. **2**, in **C** (Unit) The well is

located **990** feet from the **North** line and **1650** feet from the

West

Line of Section **35**, T. **31N**, R. **11W**, NMPM.

(GIVE LOCATION FROM SECTION LINE)

Astee-Pictured Cliffs Pool, **San Juan** County

If State Land the Oil and Gas Lease is No. **--**

If patented land the owner is **Clyde Wallace**

Address **Astee, New Mexico**

We propose to drill well with drilling equipment as follows: **Rotary tools to total depth.**

The status of plugging bond is

Drilling Contractor **Brannon & Murray Drilling Company**
Box 672, Coleman, Texas

We intend to complete this well in the **Pictured Cliffs** formation at an approximate depth of **2430**

CASING PROGRAM

We propose to use the following strings of Casing and to cement them as indicated:

Size of Hole	Size of Casing	Weight per Foot	New or Second Hand	Depth	Sacks Cement
12-1/4"	8-5/8"	22.7	New	200'	185
7-7/8"	5-1/2"	14	New	2430'	500

If changes in the above plans become advisable we will notify you immediately.

ADDITIONAL INFORMATION (If recompletion give full details of proposed plan of work.)

We propose to drill the above well to approximately 2430' and complete the Pictured Cliffs zone. Stimulation will be indicated upon reaching this depth. Copies of location plat are attached. Copies of electrical logs will be forwarded upon completion of well.

Approved.....
Except as follows:

12-11, 1957

Sincerely yours,

Pan American Petroleum Corporation
(Company or Operator)

By..... **ORIGINAL SIGNED BY**

Position **Field Clerk** **D. J. SCOTT**

Send Communications regarding well to

Name **Pan American Petroleum Corporation**

Address **Box 487, Farmington, New Mexico**

OIL CONSERVATION COMMISSION

By *Emory C. Howard*

Wallace Gas Com
#2 - PC
Replace w/ #1A

Communication

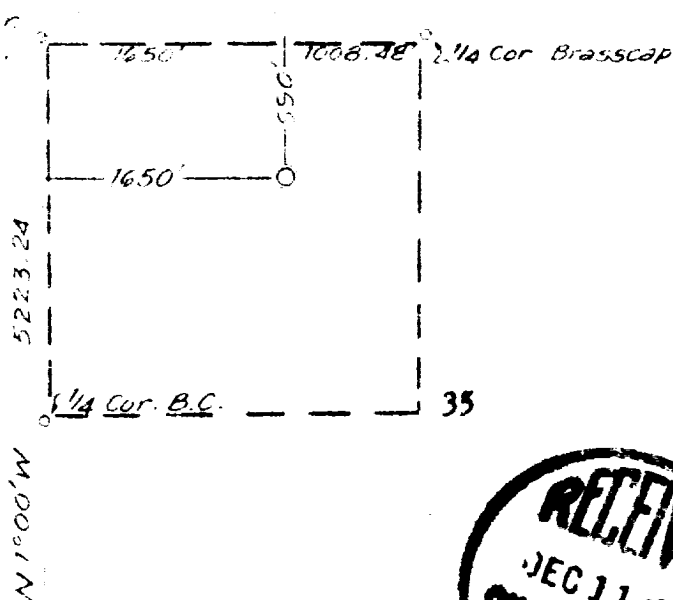
PAN AMERICAN PETROLEUM CORPORATION

H. M. Bauer, Jr., Field Engineer

Box 487, Farmington, New Mexico

R M Bauer, Jr.

Ref: GLO plat dated 1 Nov. 1956



Farmington, New Mexico

21 SEPTEMBER 1957

James P. Lease
JAMES P. LEESE
N. MEX. REG No. 1463

OIL CONSERVATION COMMISSION	
AZTEC DISTRICT OFFICE	
No. Copies Recd.	3
Operator	/
Santa Fe	/
Proration Office	
State Land Office	
U. S. G. S.	2
Transporter	
File	✓