

(SUBMIT IN TRIPLICATE)

UNITED STATES  
DEPARTMENT OF THE INTERIOR  
GEOLOGICAL SURVEY

Indian Agency \_\_\_\_\_  
Window Rock \_\_\_\_\_  
Allottee Navajo Tribal \_\_\_\_\_  
Lease No. 11-20-603-734


SUNDRY NOTICES AND REPORTS ON WELLS

NOTICE OF INTENTION TO DRILL	<input checked="" type="checkbox"/>	SUBSEQUENT REPORT OF WATER SHUT-OFF	
NOTICE OF INTENTION TO CHANGE PLANS		SUBSEQUENT REPORT OF SHOOTING OR ACIDIZING	
NOTICE OF INTENTION TO TEST WATER SHUT-OFF		SUBSEQUENT REPORT OF ALTERING CASING	
NOTICE OF INTENTION TO REDRILL OR REPAIR WELL		SUBSEQUENT REPORT OF REDRILLING OR REPAIR	
NOTICE OF INTENTION TO SHOOT OR ACIDIZE		SUBSEQUENT REPORT OF ABANDONMENT	
NOTICE OF INTENTION TO PULL OR ALTER CASING		SUPPLEMENTARY WELL HISTORY	
NOTICE OF INTENTION TO ABANDON WELL			

RECEIVED

APR 15 1959

(INDICATE ABOVE BY CHECK MARK NATURE OF REPORT, NOTICE, OR OTHER DATA)

U. S. GEOLOGICAL SURVEY  
FARMINGTON NEW MEXICO

April 11, 1959

Well No. 44 is located 778 ft. from N line and 1863 ft. from W line of sec. 32

NE NW Sec. 32 32 N 16 W N.H.P.M.

Horseshoe Gallup

San Juan

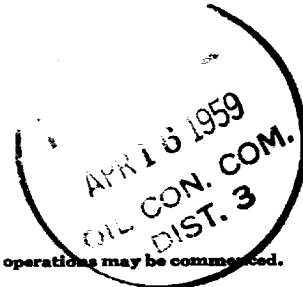
New Mexico

The elevation of the ground above sea level is 5395.5 ft.

DETAILS OF WORK

(State names of and expected depths to objective sands; show sizes, weights, and lengths of proposed casings; indicate mudding jobs, cementing points, and all other important proposed work)

We propose to drill a well at the above location to an approximate total depth of 1350'. 100' of 8-5/8" O.D. casing will be set and cemented to surface. Should the well prove productive a 4-1/2" O.D. oil string will be used. Completion is contemplated in the Gallup formation.



I understand that this plan of work must receive approval in writing by the Geological Survey before operations may be commenced.

Company The Atlantic Refining Company

Address P. O. Box 520

Casper, Wyoming

By [Signature]

Title Drilling Superintendent

**But**

100

[illegible]

SECRET

1997, 1998, 1999, 2000, 2001, 2002, 2003, 2004, 2005, 2006, 2007, 2008, 2009, 2010, 2011, 2012, 2013, 2014, 2015, 2016, 2017, 2018, 2019, 2020, 2021, 2022, 2023, 2024, 2025, 2026, 2027, 2028, 2029, 2030, 2031, 2032, 2033, 2034, 2035, 2036, 2037, 2038, 2039, 2040, 2041, 2042, 2043, 2044, 2045, 2046, 2047, 2048, 2049, 2050, 2051, 2052, 2053, 2054, 2055, 2056, 2057, 2058, 2059, 2060, 2061, 2062, 2063, 2064, 2065, 2066, 2067, 2068, 2069, 2070, 2071, 2072, 2073, 2074, 2075, 2076, 2077, 2078, 2079, 2080, 2081, 2082, 2083, 2084, 2085, 2086, 2087, 2088, 2089, 2090, 2091, 2092, 2093, 2094, 2095, 2096, 2097, 2098, 2099, 2100, 2101, 2102, 2103, 2104, 2105, 2106, 2107, 2108, 2109, 2110, 2111, 2112, 2113, 2114, 2115, 2116, 2117, 2118, 2119, 2120, 2121, 2122, 2123, 2124, 2125, 2126, 2127, 2128, 2129, 2130, 2131, 2132, 2133, 2134, 2135, 2136, 2137, 2138, 2139, 2140, 2141, 2142, 2143, 2144, 2145, 2146, 2147, 2148, 2149, 2150, 2151, 2152, 2153, 2154, 2155, 2156, 2157, 2158, 2159, 2160, 2161, 2162, 2163, 2164, 2165, 2166, 2167, 2168, 2169, 2170, 2171, 2172, 2173, 2174, 2175, 2176, 2177, 2178, 2179, 2180, 2181, 2182, 2183, 2184, 2185, 2186, 2187, 2188, 2189, 2190, 2191, 2192, 2193, 2194, 2195, 2196, 2197, 2198, 2199, 2200, 2201, 2202, 2203, 2204, 2205, 2206, 2207, 2208, 2209, 2210, 2211, 2212, 2213, 2214, 2215, 2216, 2217, 2218, 2219, 2220, 2221, 2222, 2223, 2224, 2225, 2226, 2227, 2228, 2229, 2230, 2231, 2232, 2233, 2234, 2235, 2236, 2237, 2238, 2239, 2240, 2241, 2242, 2243, 2244, 2245, 2246, 2247, 2248, 2249, 2250, 2251, 2252, 2253, 2254, 2255, 2256, 2257, 2258, 2259, 2260, 2261, 2262, 2263, 2264, 2265, 2266, 2267, 2268, 2269, 2270, 2271, 2272, 2273, 2274, 2275, 2276, 2277, 2278, 2279, 2280, 2281, 2282, 2283, 2284, 2285, 2286, 2287, 2288, 2289, 2290, 2291, 2292, 2293, 2294, 2295, 2296, 2297, 2298, 2299, 2300, 2301, 2302, 2303, 2304, 2305, 2306, 2307, 2308, 2309, 2310, 2311, 2312, 2313, 2314, 2315, 2316, 2317, 2318, 2319, 2320, 2321, 2322, 2323, 2324, 2325, 2326, 2327, 2328, 2329, 2330, 2331, 2332, 2333, 2334, 2335, 2336, 2337, 2338, 2339, 2340, 2341, 2342, 2343, 2344, 2345, 2346, 2347, 2348, 2349, 2350, 2351, 2352, 2353, 2354, 2355, 2356, 2357, 2358, 2359, 2360, 2361, 2362, 2363, 2364, 2365, 2366, 2367, 2368, 2369, 2370, 2371, 2372, 2373, 2374, 2375, 2376, 2377, 2378, 2379, 2380, 2381, 2382, 2383, 2384, 2385, 2386, 2387, 2388, 2389, 2390, 2391, 2392, 2393, 2394, 2395, 2396, 2397, 2398, 2399, 2400, 2401, 2402, 2403, 2404, 2405, 2406, 2407, 2408, 2409, 2410, 2411, 2412, 2413, 2414, 2415, 2416, 2417, 2418, 2419, 2420, 2421, 2422, 2423, 2424, 2425, 2426, 2427, 2428, 2429, 2430, 2431, 2432, 2433, 2434, 2435, 2436, 2437, 2438, 2439, 2440, 2441, 2442, 2443, 2444, 2445, 2446, 2447, 2448, 2449, 2450, 2451, 2452, 2453, 2454, 2455, 2456, 2457, 2458, 2459, 2460, 2461, 2462, 2463, 2464, 2465, 2466, 2467, 2468, 2469, 2470, 2471, 2472, 2473, 2474, 2475, 2476, 2477, 2478, 2479, 2480, 2481, 2482, 2483, 2484, 2485, 2486, 2487, 2488, 2489, 2490, 2491, 2492, 2493, 2494, 2495, 2496, 2497, 2498, 2499, 2500, 2501, 2502, 2503, 2504, 2505, 2506, 2507, 2508, 2509, 2510, 2511, 2512, 2513, 2514, 2515, 2516, 2517, 2518, 2519, 2520, 2521, 2522, 2523, 2524, 2525, 2526, 2527, 2528, 2529, 2530, 2531, 2532, 2533, 2534, 2535, 2536, 2537, 2538, 2539, 2540, 2541, 2542, 2543, 2544, 2545, 2546, 2547, 2548, 2549, 2550, 2551, 2552, 2553, 2554, 2555, 2556, 2557, 2558, 2559, 2560, 2561, 2562, 2563, 2564, 2565, 2566, 2567, 2568, 2569, 2570, 2571, 2572, 2573, 2574, 2575, 2576, 2577, 2578, 2579, 2580, 2581, 2582, 2583, 2584, 2585, 2586, 2587, 2588, 2589, 2590, 2591, 2592, 2593, 2594, 2595, 2596, 2597, 2598, 2599, 2600, 2601, 2602, 2603, 2604, 2605, 2606, 2607, 2608, 2609, 2610, 2611, 2612, 2613, 2614, 2615, 2616, 2617, 2618, 2619, 2620, 2621, 2622, 2623, 2624, 2625, 2626, 2627, 2628, 2629, 2630, 2631, 2632, 2633, 2634, 2635, 2636, 2637, 2638, 2639, 2640, 2641, 2642, 2643, 2644, 2645, 2646, 2647, 2648, 2649, 2650, 2651, 2652, 2653, 2654, 2655, 2656, 2657, 2658, 2659, 2660, 2661, 2662, 2663, 2664, 2665, 2666, 2667, 2668, 2669, 2670, 2671, 2672, 2673, 2674, 2675, 2676, 2677, 2678, 26

1. *Chlorophyll a* (Chl *a*)  
 2. *Chlorophyll b* (Chl *b*)  
 3. *Chlorophyll c* (Chl *c*)  
 4. *Chlorophyll d* (Chl *d*)  
 5. *Chlorophyll e* (Chl *e*)  
 6. *Chlorophyll f* (Chl *f*)  
 7. *Chlorophyll g* (Chl *g*)  
 8. *Chlorophyll h* (Chl *h*)  
 9. *Chlorophyll i* (Chl *i*)  
 10. *Chlorophyll j* (Chl *j*)  
 11. *Chlorophyll k* (Chl *k*)  
 12. *Chlorophyll l* (Chl *l*)  
 13. *Chlorophyll m* (Chl *m*)  
 14. *Chlorophyll n* (Chl *n*)  
 15. *Chlorophyll o* (Chl *o*)  
 16. *Chlorophyll p* (Chl *p*)  
 17. *Chlorophyll q* (Chl *q*)  
 18. *Chlorophyll r* (Chl *r*)  
 19. *Chlorophyll s* (Chl *s*)  
 20. *Chlorophyll t* (Chl *t*)  
 21. *Chlorophyll u* (Chl *u*)  
 22. *Chlorophyll v* (Chl *v*)  
 23. *Chlorophyll w* (Chl *w*)  
 24. *Chlorophyll x* (Chl *x*)  
 25. *Chlorophyll y* (Chl *y*)  
 26. *Chlorophyll z* (Chl *z*)  
 27. *Chlorophyll aa* (Chl *aa*)  
 28. *Chlorophyll ab* (Chl *ab*)  
 29. *Chlorophyll ac* (Chl *ac*)  
 30. *Chlorophyll ad* (Chl *ad*)  
 31. *Chlorophyll ae* (Chl *ae*)  
 32. *Chlorophyll af* (Chl *af*)  
 33. *Chlorophyll ag* (Chl *ag*)  
 34. *Chlorophyll ah* (Chl *ah*)  
 35. *Chlorophyll ai* (Chl *ai*)  
 36. *Chlorophyll aj* (Chl *aj*)  
 37. *Chlorophyll ak* (Chl *ak*)  
 38. *Chlorophyll al* (Chl *al*)  
 39. *Chlorophyll am* (Chl *am*)  
 40. *Chlorophyll an* (Chl *an*)  
 41. *Chlorophyll ao* (Chl *ao*)  
 42. *Chlorophyll ap* (Chl *ap*)  
 43. *Chlorophyll aq* (Chl *aq*)  
 44. *Chlorophyll ar* (Chl *ar*)  
 45. *Chlorophyll as* (Chl *as*)  
 46. *Chlorophyll at* (Chl *at*)  
 47. *Chlorophyll au* (Chl *au*)  
 48. *Chlorophyll av* (Chl *av*)  
 49. *Chlorophyll aw* (Chl *aw*)  
 50. *Chlorophyll ax* (Chl *ax*)  
 51. *Chlorophyll ay* (Chl *ay*)  
 52. *Chlorophyll az* (Chl *az*)  
 53. *Chlorophyll aza* (Chl *aza*)  
 54. *Chlorophyll abz* (Chl *abz*)  
 55. *Chlorophyll acz* (Chl *acz*)  
 56. *Chlorophyll adz* (Chl *adz*)  
 57. *Chlorophyll aez* (Chl *aez*)  
 58. *Chlorophyll afz* (Chl *afz*)  
 59. *Chlorophyll agz* (Chl *agz*)  
 60. *Chlorophyll ahz* (Chl *ahz*)  
 61. *Chlorophyll aiz* (Chl *aiz*)  
 62. *Chlorophyll ajz* (Chl *ajz*)  
 63. *Chlorophyll akz* (Chl *akz*)  
 64. *Chlorophyll alz* (Chl *alz*)  
 65. *Chlorophyll amz* (Chl *amz*)  
 66. *Chlorophyll anz* (Chl *anz*)  
 67. *Chlorophyll aoz* (Chl *aoz*)  
 68. *Chlorophyll apz* (Chl *apz*)  
 69. *Chlorophyll aqz* (Chl *aqz*)  
 70. *Chlorophyll arz* (Chl *arz*)  
 71. *Chlorophyll asz* (Chl *asz*)  
 72. *Chlorophyll atz* (Chl *atz*)  
 73. *Chlorophyll auz* (Chl *auz*)  
 74. *Chlorophyll avz* (Chl *avz*)  
 75. *Chlorophyll awz* (Chl *awz*)  
 76. *Chlorophyll axz* (Chl *axz*)  
 77. *Chlorophyll ayz* (Chl *ayz*)  
 78. *Chlorophyll azz* (Chl *azz*)  
 79. *Chlorophyll azaa* (Chl *aza*  
 80. *Chlorophyll abz* (Chl *abz*)  
 81. *Chlorophyll acz* (Chl *acz*)  
 82. *Chlorophyll adz* (Chl *adz*)  
 83. *Chlorophyll aez* (Chl *aez*)  
 84. *Chlorophyll afz* (Chl *afz*)  
 85. *Chlorophyll agz* (Chl *agz*)  
 86. *Chlorophyll ahz* (Chl *ahz*)  
 87. *Chlorophyll aiz* (Chl *aiz*)  
 88. *Chlorophyll ajz* (Chl *ajz*)  
 89. *Chlorophyll akz* (Chl *akz*)  
 90. *Chlorophyll alz* (Chl *alz*)  
 91. *Chlorophyll amz* (Chl *amz*)  
 92. *Chlorophyll anz* (Chl *anz*)  
 93. *Chlorophyll aoz* (Chl *aoz*)  
 94. *Chlorophyll apz* (Chl *apz*)  
 95. *Chlorophyll aqz* (Chl *aqz*)  
 96. *Chlorophyll arz* (Chl *arz*)  
 97. *Chlorophyll asz* (Chl *asz*)  
 98. *Chlorophyll atz* (Chl *atz*)  
 99. *Chlorophyll auz* (Chl *auz*)  
 100. *Chlorophyll avz* (Chl *avz*)  
 101. *Chlorophyll awz* (Chl *awz*)  
 102. *Chlorophyll axz* (Chl *axz*)  
 103. *Chlorophyll ayz* (Chl *ayz*)  
 104. *Chlorophyll azz* (Chl *azz*)  
 105. *Chlorophyll azaa* (Chl *aza*  
 106. *Chlorophyll abz* (Chl *abz*)  
 107. *Chlorophyll acz* (Chl *acz*)  
 108. *Chlorophyll adz* (Chl *adz*)  
 109. *Chlorophyll aez* (Chl *aez*)  
 110. *Chlorophyll afz* (Chl *afz*)  
 111. *Chlorophyll agz* (Chl *agz*)  
 112. *Chlorophyll ahz* (Chl *ahz*)  
 113. *Chlorophyll aiz* (Chl *aiz*)  
 114. *Chlorophyll ajz* (Chl *ajz*)  
 115. *Chlorophyll akz* (Chl *akz*)  
 116. *Chlorophyll alz* (Chl *alz*)  
 117. *Chlorophyll amz* (Chl *amz*)  
 118. *Chlorophyll anz* (Chl *anz*)  
 119. *Chlorophyll aoz* (Chl *aoz*)  
 120. *Chlorophyll apz* (Chl *apz*)  
 121. *Chlorophyll aqz* (Chl *aqz*)  
 122. *Chlorophyll arz* (Chl *arz*)  
 123. *Chlorophyll asz* (Chl *asz*)  
 124. *Chlorophyll atz* (Chl *atz*)  
 125. *Chlorophyll auz* (Chl *auz*)  
 126. *Chlorophyll avz* (Chl *avz*)  
 127. *Chlorophyll awz* (Chl *awz*)  
 128. *Chlorophyll axz* (Chl *axz*)  
 129. *Chlorophyll ayz* (Chl *ayz*)  
 130. *Chlorophyll azz* (Chl *azz*)  
 131. *Chlorophyll azaa* (Chl *aza*  
 132. *Chlorophyll abz* (Chl *abz*)  
 133. *Chlor*

## NEW MEXICO OIL CONSERVATION COMMISSION

## Well Location and Acreage Dedication Plat

April 14, 1959

Section A.

Date

Operator **THE ATLANTIC REFINING COMPANY** Lease **NAVAJO**  
 Well No. **44** Unit Letter **C** Section **32** Township **31 NORTH** Range **16 WEST**, NMPM  
 Located **778** Feet From **the NORTH** Line, **1863** Feet From **the WEST** Line  
 County **SAN JUAN** G. L. Elevation **5395.5** Dedicated Acreage **40.01** Acres  
 Name of Producing Formation **Tecito and Lower Tecito** Pool **Horseshoe-Gallup**

1. Is the Operator the only owner in the dedicated acreage outlined on the plat below?  
 Yes ☒ No ☐
2. If the answer to question one is "no", have the interests of all the owners been consolidated by communitization agreement or otherwise? Yes ☐ No ☐ If answer is "yes", Type of Consolidation.

3. If the answer to question two is "no", list all the owners and their respective interests below:

Owner

Land Description

Section B.

This is to certify that the information in Section A above is true and complete to the best of my knowledge and belief.

**The Atlantic Refining Company**

(Operator)

A. D. Floxin

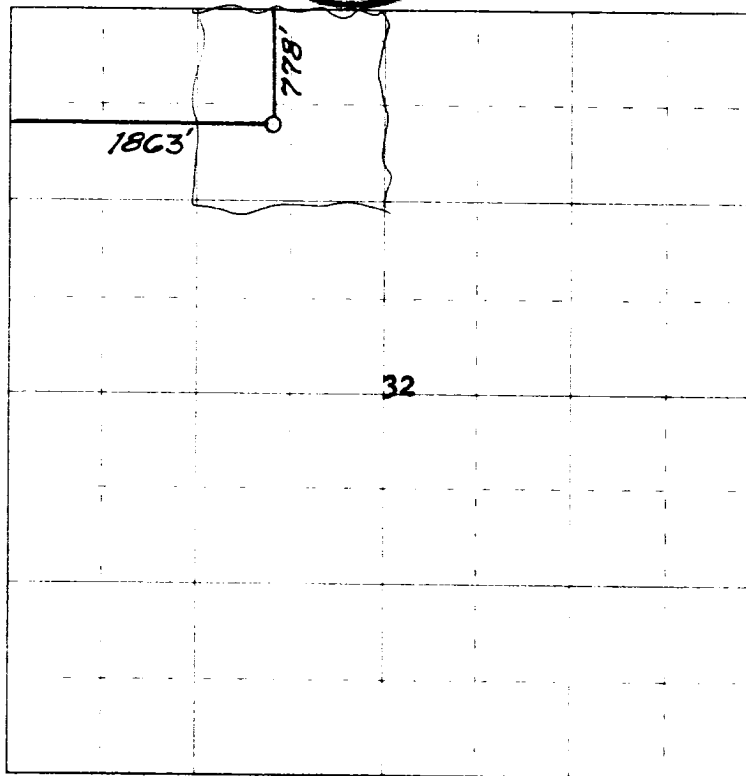
(Representative)

P. C. Box 520, Casper, Wyoming

(Address)

Ref: SJE plat of survey

Note: All distances must be from outer boundaries of section.



0 330 660 990 1320 1650 1980 2310 2640 2000 1500 1000 500 0

Scale 4 inches equal 1 mile

This is to certify that the above plat was prepared from field notes of actual surveys made by me or under my supervision and that the same are true and correct to the best of my knowledge and belief.

(Seal)

Farmington, New Mexico

Date Surveyed **6 AUGUST 1958**

*James P. Leese*  
 Registered Professional Engineer and/or Land Surveyor  
 EXPIRATION DATE 1960