

NUMBER OF COPIES RECEIVED	
DISTRIBUTION	
SANTA FE	
FILE	
U.S.G.S.	
LAND OFFICE	
TRANSPORTER	OIL
	GAS
PRODUCTION OFFICE	
OPERATOR	

**NEW MEXICO OIL CONSERVATION COMMISSION**  
**WELL LOCATION AND ACREAGE DEDICATION PLAT**  
 SEE INSTRUCTIONS FOR COMPLETING THIS FORM ON THE REVERSE SIDE

FORM C-128  
 Revised 5/1/57

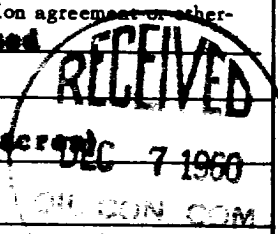
**SECTION A**

Operator <b>CONSOLIDATED OIL AND GAS CORPORATION</b>		Lease <b>HALE - ADOBE</b>		Well No. <b>1</b>
Unit Letter <b>G</b>	Section <b>28</b>	Township <b>31 NORTH</b>	Range <b>13 WEST</b>	County <b>SAN JUAN</b>
Actual Footage Location of Well: <b>1450</b> feet from the <b>NORTH</b> line and <b>1450</b> feet from the <b>EAST</b> line				
Ground Level Elev. <b>5662.0</b>	Producing Formation <b>Dakota</b>	Pool <b>Basin-Dakota</b>	Dedicated Acreage: <b>320</b> Acres	

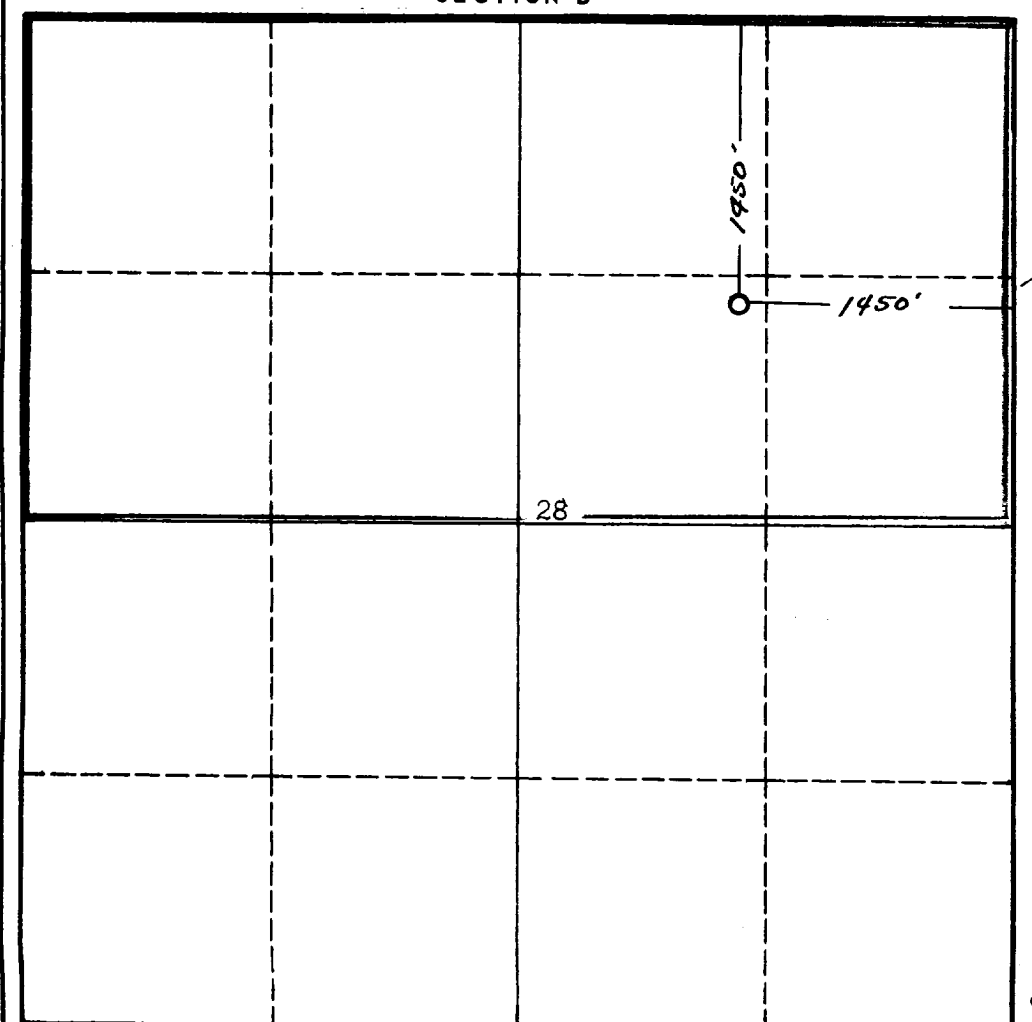
Ref: GLO plat dated 9 July 1954

1. Is the Operator the only owner in the dedicated acreage outlined on the plat below? YES \_\_\_\_\_ NO X. ("Owner" means the person who has the right to drill into and to produce from any pool and to appropriate the production either for himself or for himself and another. (65-3-29 (e) NMSA 1935 Comp.)
2. If the answer to question one is "no," have the interests of all the owners been consolidated by communitization agreement or otherwise? YES \_\_\_\_\_ NO X. If answer is "yes," Type of Consolidation Being communitized
3. If the answer to question two is "no," list all the owners and their respective interests below:

Owner <b>JOSEPHINE BAY PAUL</b>	Land Description <b>E/2 NE &amp; NWNW (120 acres)</b>
------------------------------------	--



**SECTION B**



**CERTIFICATION**

I hereby certify that the information in SECTION A above is true and complete to the best of my knowledge and belief.

Name <i>George S. Lee</i>
Position <b>Production Manager</b>
Company <b>Consolidated Oil &amp; Gas, Inc.</b>
Date <b>December 5, 1960</b>

I hereby certify that the well location shown on the plat in SECTION B was plotted from field notes of actual surveys made by me or under my supervision, and that the same is true and correct to the best of my knowledge and belief.

Date Surveyed <b>1 December 1960</b>
Registered Professional Engineer and/or Land Surveyor <i>James P. Leese</i>
Certificate No. <b>1463</b>

0 330 660 990 1320 1650 1980 2310 2640 2000 1500 1000 500 0

### **INSTRUCTIONS FOR COMPLETION OF FORM C-128**

1. Operator shall furnish and certify to the information called for in Section A.
2. Operator shall outline the dedicated acreage for *both* oil and gas wells on the plat in Section B.
3. A registered professional engineer or land surveyor registered in the State of New Mexico or approved by the Commission shall show on the plat the location of the well and certify this information in the space provided.
4. All distances shown on the plat must be from the outer boundaries of the Section.
5. If additional space is needed for listing owners and their respective interests as required in question 3 of Section A, please use space below.