

NEW MEXICO
OIL CONSERVATION COMMISSION

Gas Well Plat

Date January 12, 1955

Colorado Oil & Gas Corp.

Dona Riddle

#1

Operator

Lease

Well No.

Name of Producing Formation Manoverde

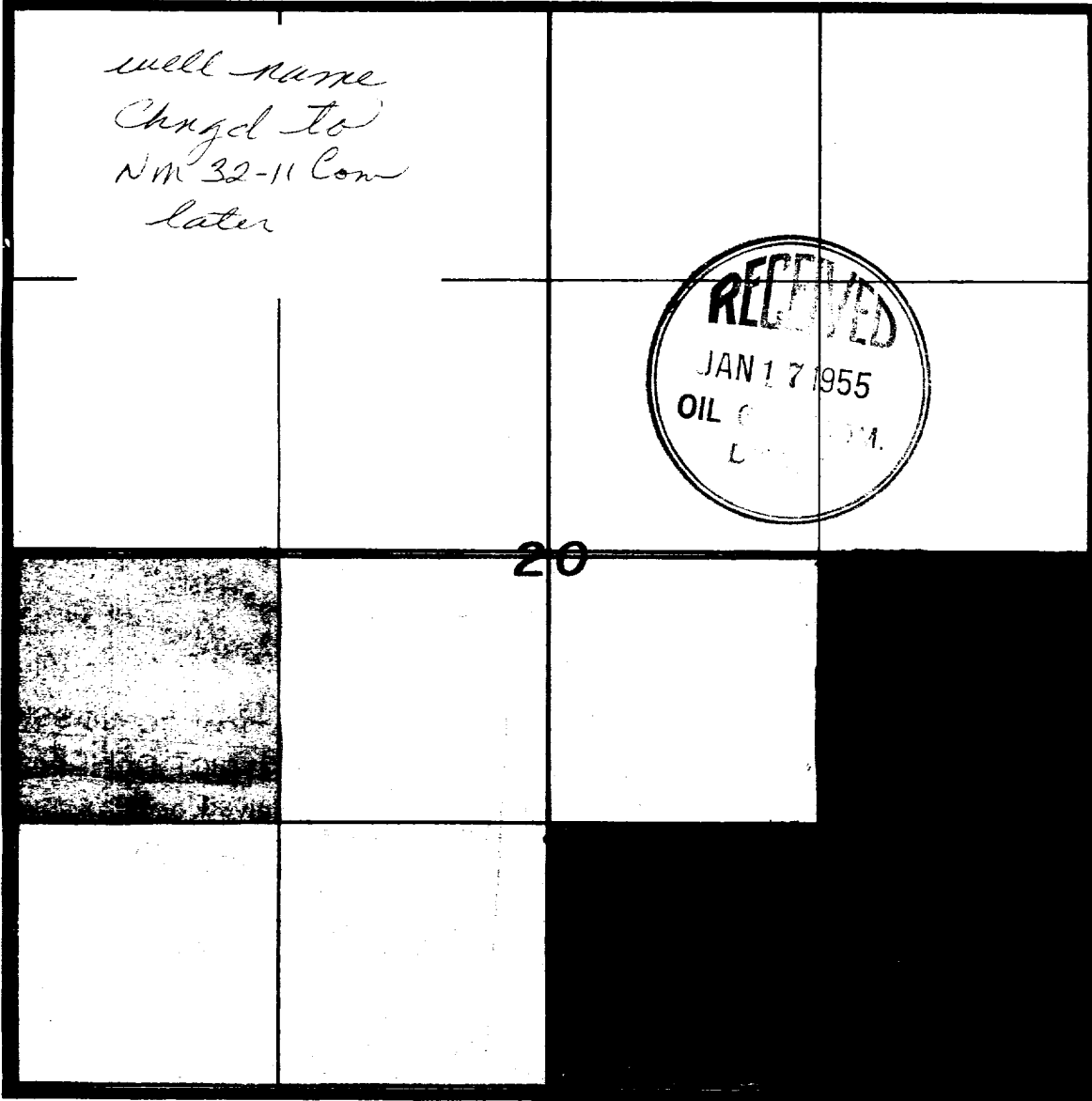
Pool (San Juan County)

No. Acres Dedicated to the Well 320

Indicate land status and show ownership. See below

Ut Li:0

SECTION 20 TOWNSHIP 32N RANGE 11W



I hereby certify that the information given above is true and complete to the best of my knowledge.

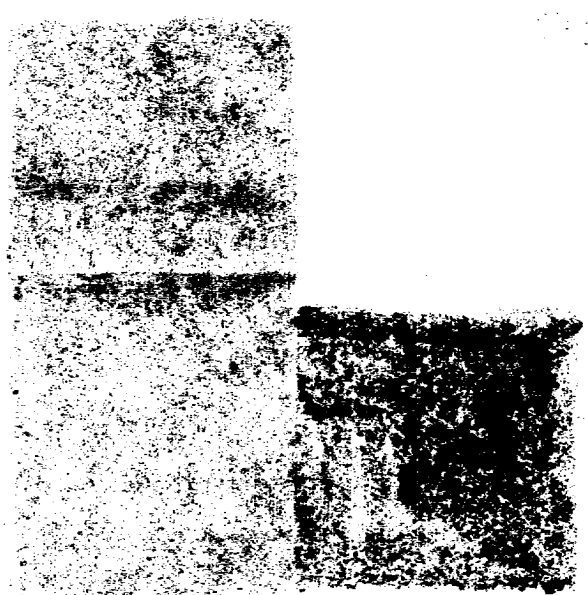
- U.S. GOVT - NEW MEXICO 010909
- U.S. GOVT - NEW MEXICO 010910
- U.S. GOVT - NEW MEXICO 03189

Name *[Signature]*
 Position Head of Production
 Representing Colorado Oil & Gas Corp.
 Address 311 Equitable Building

PER LEASE - LOUIE R. LAYNE
 Lessor

(over)

X



OIL CONSERVATION COMMISSION
AZTEC DISTRICT OFFICE

No. Copies Received 1

DISTRIBUTION

	NO. FURNISHED	
Operator	/	
Santa Fe	/	
Proration Office		
State Land Office		
U. S. G. S.	/	
Transporter		
File	/	✓