

UNITED STATES
DEPARTMENT OF THE INTERIOR
BUREAU OF LAND MANAGEMENT

FORM APPROVED
Budget Bureau No. 1004-0135
Expires: March 31, 1993

SUNDRY NOTICES AND REPORTS ON WELLS

Do not use this form for proposals to drill or to deepen or reentry to a different reservoir.

Use "APPLICATION FOR PERMIT - " for such proposals

SUBMIT IN TRIPLICATE

1. Type of Well

☐ Oil Well ☒ Gas Well ☐ Other

2. Name of Operator

Phillips Petroleum Company

3. Address and Telephone No.

5525 Highway 64, NBU 3004, Farmington, NM 87401

505-599-3403

4. Location of Well (Footage, Sec., T., R., M., or Survey Description)

1800' FSL & 990' FWL
Section 20, T32N, R7W

5. Lease Designation and Serial No.

SF-078460

6. If Indian, Allottee or Tribe Name

7. If Unit or CA, Agreement Designation

San Juan 32-7 Unit

8. Well Name and No.

SJ 32-7 Unit #21

9. API Well No.

30-039-11315

10. Field and Pool, or exploratory Area

Blanco Mesaverde

11. County or Parish, State

San Juan, NM

12. CHECK APPROPRIATE BOX(s) TO INDICATE NATURE OF NOTICE, REPORT, OR OTHER DATA

TYPE OF SUBMISSION

- ☒ Notice of Intent
☐ Subsequent Report
☐ Final Abandonment Notice

TYPE OF ACTION

- ☒ Abandonment
☐ Recompletion
☐ Plugging Back
☐ Casing Repair
☐ Altering Casing
☐ Other _____
- ☐ Change of Plans
☐ New Construction
☐ Non-Routine Fracturing
☐ Water Shut-Off
☐ Conversion to Injection
☐ Dispose Water

(Note: Report results of multiple completion on Well Completion or Recompletion Report and Log form.)

13. Describe Proposed or Completed Operations (Clearly state all pertinent details, and give pertinent dates, including estimated date of starting any proposed work. If well is directionally drilled, give subsurface locations and measured and true vertical depths for all markers and zones pertinent to this work.)*

Phillips Petroleum proposed to plug and abandoned this well per the attached procedure and wellbore diagrams.

14. I hereby certify that the foregoing is true and correct

Signed Daisy Chugator Title Regulatory Assistant

Date 10-13-98

(This space for Federal or State office use)

Approved by /S/ Duane W. Spencer

Title _____

Date OCT 22 1998

Conditions of approval, if any:

Title 18 U.S.C. Section 1001, makes it a crime for any person knowingly and willfully to make to any department or agency of the United States any false, fictitious or fraudulent statements or representations as to any matter within its jurisdiction.

* See Instruction on Reverse Side

NMOCD

PLUG AND ABANDONMENT PROCEDURE

19-9-98

San Juan 32-7 Unit #21

Blanco Mesaverde

1800' FSL and 900' FWL / SE, Sec. 20, T32N, R7W

San Juan County, New Mexico

Note: All cement volumes use 100% excess outside pipe and 50' excess inside. The stabilizing wellbore fluid will be 8.3 ppg, sufficient to balance all exposed formation pressures.

1. Install and test location rig anchors. Dig and line pit for waste fluid. Comply with all NMOCD, BLM, and Phillips safety regulations.
2. MOL and RU daylight pulling unit. Conduct safety meeting for all personnel on location. NU relief line. Blow down well and kill with water as necessary. ND wellhead and NU BOP. Test BOP.
3. Tally and pick up 2-3/8" tubing work string and TIH.
4. **Plug #1 (Mesaverde top, 5200' - 5100')**: Load casing and establish rate into known leak, which appears to be shallow because the bradenhead circulated during a 1984 test. Mix and spot 17 sxs Class B cement inside 5-1/2" casing. Note if well fluid level remains stable. TOH with tubing to 3523'.
5. **Plug #2 (7-5/8" Casing Shoe and Liner top, 3523' - 3350')**: Mix and spot 38 sxs Class B cement inside casing to cover liner top. TOH with tubing to 3209'.
6. **Plug #3 (Pictured Cliffs top, 3209' - 3109')**: Mix and spot 34 sxs Class B cement inside casing to cover Pictured Cliffs top. TOH with tubing to 2844'.
7. **Plug #4 (Fruitland top, 2844' - 2744')**: Mix and spot 34 sxs Class B cement inside casing to cover Fruitland top. TOH with tubing.
8. **Plug #5 (Kirtland and Ojo Alamo top, 2440' - 2180')**: Perforate 3 HSC squeeze holes at 2440' (Unable to perforate at 2470', 50' below Kirtland top, due to cement top.) PU 7-5/8" cement retainer and RIH; set at 2350'. Pressure test tubing to 1000# and test casing above CR. Then establish rate into squeeze holes. Mix 165 sxs Class B cement and squeeze 95 sxs cement outside 7-5/8" casing and leave 70 sxs cement inside casing to cover Ojo Alamo top. TOH with tubing.
9. **Plug #6 (Nacimiento top, 1040' - 940')**: Perforate 3 HSC squeeze holes at 1040'. PU 7-5/8" cement retainer and RIH; set at 990'. Pressure test casing above CR if necessary. Then establish rate into squeeze holes. Mix 71 sxs Class B cement and squeeze 37 sxs cement outside 7-5/8" casing and leave 34 sxs cement inside casing to cover Nac. top. TOH and LD.
10. **Plug #7 (10-3/4" Surface Casing at 293')**: Perforate 3 squeeze holes at 343'. Establish circulation out bradenhead valve. Mix and pump approximately 135 sxs Class B cement down 7-5/8" casing, circulate good cement out bradenhead valve. Shut in well and WOC.
11. ND BOP and cut off wellhead below surface casing. Install P&A marker to comply with regulations. RD, MOL, cut off anchors, and restore location. Backfill pit and clean up location.

San Juan 32-7 #21

Current

Blanco Mesaverde

SW, Section 20, T-32-N, R-7-W, San Juan County, NM

Today's Date: 10/9/98

Spud: 10-1-60

Completed: None

Elevation: 6299' (GL)

Logs: IEL; TS

Nacimiento @ 990*

* Estimated

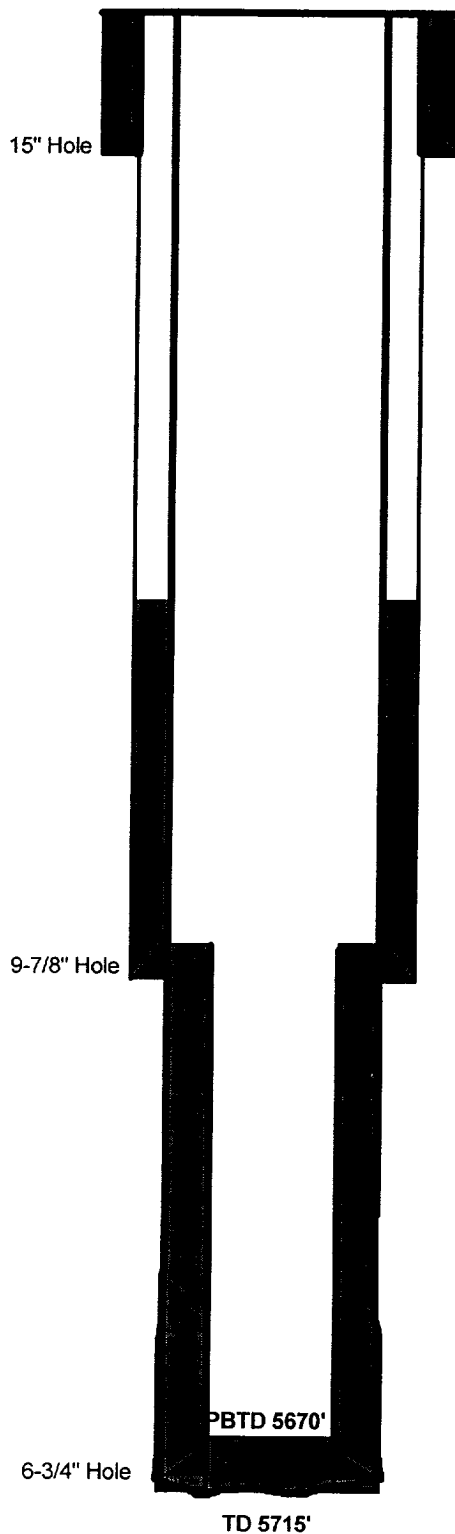
Ojo Alamo @ 2230'

Kirtland @ 2420'

Fruitland @ 2794'

Pictured Cliffs @ 3159'

Mesaverde @ 5200'



10-3/4" 32.75#, Csg set @ 293'
Cmt w/ 340sxs (Circulated to Surface)

Well History

Well has never been completed.

Nov '84: Removed P&A marker, NU
flange and attempted to pressure test
casing, pumped 2.8 bpm at 2600#;
established circulation out bradenhead.

TOC @ 2475' (CBL)

7-5/8" 26.4#, J55 Csg set @ 3483'
Cemented with 154 sxs

5-1/2" 15.5#, J55 Casing Liner from 3400' to 5715'
Cemented 220 sxs, TOC at Liner top by TS

San Juan 32-7 #21

Proposed P&A

Blanco Mesaverde

SW, Section 20, T-32-N, R-7-W, San Juan County, NM

Today's Date: 10/9/98

Spud: 10-1-60

Completed: None

Elevation: 6299' (GL)

Logs: IEL; TS

Nacimiento @ 990'
* Estimated

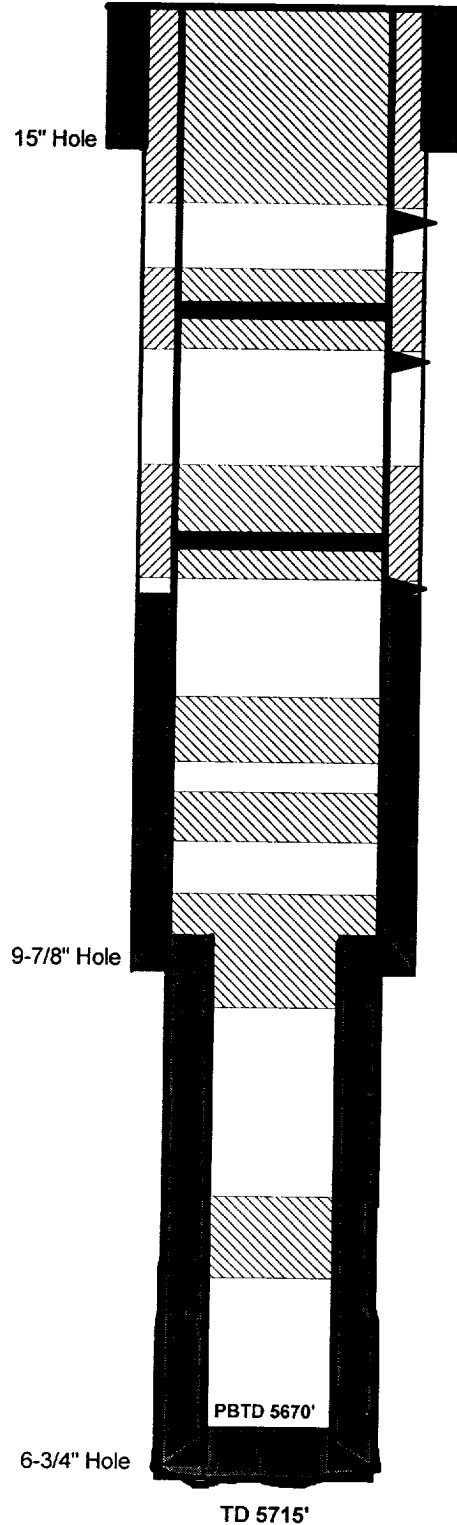
Ojo Alamo @ 2230'

Kirtland @ 2420'

Fruitland @ 2794'

Pictured Cliffs @ 3159'

Mesaverde @ 5200'



10-3/4" 32.75#, Csg set @ 293'
Cmt w/ 340sxs (Circulated to Surface)

Plug #7 343' - Surface
Cmt with 150 sxs Class B

Perforate @ 343'

Cmt Retainer @ 990'

Plug #6 1040' - 940'
Cmt with 71 sxs Class B,
37 sxs outside casing and
34 sxs inside casing.

Perforate @ 1040'

Plug #5 2440' - 2180'
Cmt with 165 sxs Class B,
95 sxs outside casing and
70 sxs inside casing.

Cmt Retainer @ 2350'

Perforate @ 2440'

TOC @ 2475' (CBL)

Plug #4 2844' - 2744'
Cmt with 34 sxs Class B

Plug #3 3209' - 3109'
Cmt with 34 sxs Class B

7-5/8" 26.4#, J55 Csg set @ 3483'
Cemented with 154 sxs

Plug #2 3523' - 3350'
Cmt with 38 sxs Class B

Plug #1 5200' - 5100'
Cmt with 17 sxs Class B

5-1/2" 15.5#, J55 Casing Liner from 3400' to 5715'
Cemented 220 sxs, TOC at Liner top by TS

PBTD 5670'

TD 5715'