

UNITED STATES  
DEPARTMENT OF THE INTERIOR  
BUREAU OF LAND MANAGEMENT

Sundry Notices and Reports on Wells

1. Type of Well

GAS

2. Name of Operator

SOUTHLAND ROYALTY COMPANY

3. Address & Phone No. of Operator

PO Box 4289, Farmington, NM 87499 (505) 326-9700

4. Location of Well, Footage, Sec., T, R, M

990' FSL, 920' FWL, Sec.28, T-31-N, R-12-W, NMPM

5. Lease Number

NM-01614

6. If Indian, All. or

Tribe Name

7. Unit Agreement Name

8. Well Name & Number

Thompson #9

9. API Well No.

30-045-11669

10. Field and Pool

Blanco MV/Basin DK

11. County and State

San Juan Co, NM

12. CHECK APPROPRIATE BOX TO INDICATE NATURE OF NOTICE, REPORT, OTHER DATA

Type of Submission

☒ Notice of Intent

☐ Subsequent Report

☐ Final Abandonment

Type of Action

☒ Abandonment

☐ Recompletion

☐ Plugging Back

☐ Casing Repair

☐ Altering Casing

☐ Other -

☐ Change of Plans

☐ New Construction

☐ Non-Routine Fracturing

☐ Water Shut off

☐ Conversion to Injection

13. Describe Proposed or Completed Operations

It is intended to plug and abandon the subject well according to the attached procedure and wellbore diagram.

RECEIVED  
JAN 24 1996

OIL CON. DIV.  
DIST. 3

14. I hereby certify that the foregoing is true and correct.

Signed [Signature] (LWD4) Title Regulatory Administrator Date 12/21/95

(This space for Federal or State Office use)

APPROVED BY \_\_\_\_\_ Title \_\_\_\_\_ Date \_\_\_\_\_

CONDITION OF APPROVAL, if any:

APPROVAL

[Signature]

# PLUG & ABANDONMENT PROCEDURE

12/19/95

Thompson #9  
Blanco Mesaverde / Basin Dakota  
DPNO 74205 (MV) 74206 (DK)  
SW, Section 28, T-31-N, R-12-W  
San Juan County, New Mexico

*Note: All cement volumes use 100% excess outside pipe and 50' excess inside pipe. The stabilizing wellbore fluid will be 8.3 ppg, sufficient to balance all exposed formation pressures.*

1. Install and test location rig anchors. Prepare blow pit for cement washout only. Comply to all NMOCD, BLM, and MOI safety regulations.
2. Conduct safety meeting for all personnel on location. NU relief line. Blow down well and kill with water as necessary. ND wellhead and NU BOP. Test BOP.
3. PU on 2 3/8" ( 220 jts.) production tubing and POOH. Run gauge ring (5 1/2", 15#) to 7082'. PU 5 1/2" CR and TIH.
4. **Plug #1 (Dakota perfs, 7082'--6910')**: Set 5 1/2" CR @ 6960'. Establish rate and squeeze DK perforations with 28 sxs Class B cement. Sting out of retainer and spot 6 sxs on top of retainer. PT casing to 500 psi and POOH.
5. **Plug #2 (Gallup top, 6148'--6048')**: Perforate 4 holes @ 6148'. TIH with 5 1/2" CR and set @ 6098'. Establish rate with water into squeeze holes. Mix and pump 48 sxs Class B cement, squeeze 30 sxs outside and leave 18 sxs inside. POOH.
6. **Plug #3 (Point Lookout perfs & top, 5023' -- 4722')**: TIH with 5 1/2" CR and set @ 4772'. Establish rate and squeeze MV perforations with 58 sxs Class B cement. Sting out of retainer and spot 6 sxs on top of retainer. POOH.
7. **Plug #4 (Cliff House top, 4072' -- 3972')**: Perforate 4 holes @ 4055'. TIH with 5 1/2" CR and set @ 4022'. Establish rate with water into squeeze holes. Mix and pump 48 sxs Class B cement, squeeze 30 sxs outside and leave 18 sxs inside. PUH to 2505'.
8. **Plug #5 (Pictured Cliffs and Fruitland top, 2505' -- 2020')**: Mix 62 sxs Class B cement and spot balanced plug from 2505' -- 2020'. POOH.
8. **Plug #6 (Kirtland and Ojo Alamo top, 900'-- 690')**: Perforate 4 holes @ 900'. TIH with 5 1/2" CR and set @ 850'. Establish rate with water into squeeze holes. Mix and pump 92 sxs Class B cement, squeeze 62 sxs outside and leave 30 sxs inside. POOH'.
9. **Plug #7 (Surface, 358' -- Surface)**: Perforate 2 holes @ 358. Establish circulation down 5 1/2 casing and out bradenhead valve. Mix and pump approximately 100 sxs Class B cement and circulate out bradenhead.
10. ND BOP and cut off wellhead below surface casing. Note the cement level in the casing and annulus; fill as necessary. Install P&A marker to comply with regulations.
11. Rig down, cut off anchors, move off location, and restore location per BLM stipulations.

Recommended: \_\_\_\_\_  
Operations Engineer

Approval: \_\_\_\_\_  
Production Superintendent

# THOMPSON #9

Current -- 8/24/95

Blanco Mesaverde/Basin Dakota  
DPNO 74205/74206

990' FSL, 920' FWL  
Sec. 28, T31N, R12W, San Juan Co., NM

Spud: 3-20-66  
Completed: 5-03-66  
Workover: 6-13-68  
Tbg C/O: 6-28-91

**Plug #7 358' -- Surface**  
**Perf @ 358'**  
**Cmt w/100 sxs Class B**

Ojo Alamo @ 740'  
Kirtland @ 850'

**Plug #6 900-- 690'**  
**CR @ 850'**  
**Perf @ 900'**  
**Cmt w/92 sxs Class B**

Fruitland @ 2070'  
Pictured Cliffs @ 2455'

**Plug #5 2505' -- 2020'**  
**Cmt w/62 sxs Class B**

Cliff House @ 4022'

**Plug #4 4072' -- 3972'**  
**CR @ 4022'**  
**Perf @ 4055'**  
**Cmt w/48 sxs Class B**

Point Lookout @ 4821'

**Plug #3 5023' -- 4722'**  
**CR @ 4772'**  
**Cmt w/64 sxs Class B**

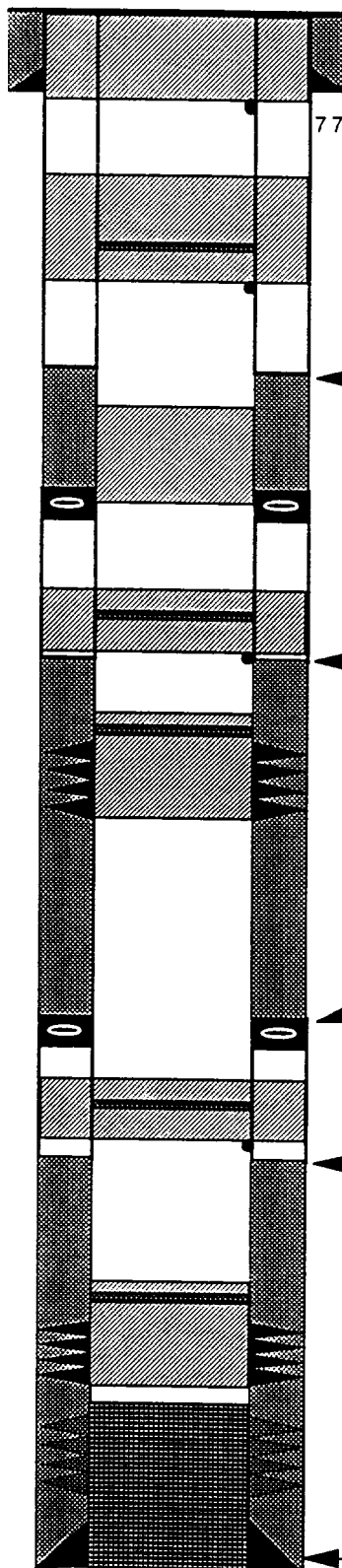
Gallup @ 6098'

**Plug #2 6148' -- 6048'**  
**CR @ 6098'**  
**Perf @ 6148'**  
**Cmt w/48 sxs Class B**

Greenhorn @ 6827'  
Graneros @ 6882'

Dakota @ 7010'

**Plug #1 7082' -- 6910'**  
**CR @ 6960'**  
**Cmt w/34 sxs Class B**



12 1/4" Hole

8 5/8" 24# Surface csg set @ 308'.  
Cement with 250 sacks to surface.

7 7/8" Hole

TOC @ 1470' (CBL)

DV Tool @ 2664'

TOC @ 4064' (CBL)

Perf MV 5015'-23', 4900', 4912', 4822'-96'  
w/2 SPF. Frac w/60,000# 20/40, 40,000#  
10/20, 2700 bbls water.  
1968 W/O: Perf 5012-22, 4820-80 w/2 SPF.  
Frac w/40,000# 20/40, 17,000# 10/20, ISIP 0.

DV Tool @ 5153'

TOC @ 6475' (CBL)

1968 W/O: Squeeze Dk w/100 sx - Perf  
Lower Dakota 7125-40' w/2 SPF and Frac -  
Squeeze off w/50 sx. Drilled out cmt to 7102'.  
Perf 7010'-7082'. Frac with 45,000#  
sand and 47,790 gals water.  
Re-perf 7012'-7082'. Re-frac' with 27,500#  
sand and 49,200 gals water

5 1/2" csg set @ 7187'

14# 4900' / 15.5# 2300'

Cmt 3 stages with 870 sacks

TD @ 7196'  
PBTD @ 7102'

# THOMPSON #9

Current -- 8/24/95

Blanco Mesaverde/Basin Dakota

DPNO 74205/74206

990' FSL, 920' FWL

Sec. 28, T31N, R12W, San Juan Co., NM

Spud: 3-20-66  
Completed: 5-03-66  
Workover: 6-13-68  
Tbg C/O: 6-28-91

Ojo Alamo @ 740'  
Kirtland @ 850'

Fruitland @ 2070'

Pictured Cliffs @ 2455'

Cliff House @ 4022'

Point Lookout @ 4821'

Gallup @ 6098'

Greenhorn @ 6827'

Graneros @ 6882'

Dakota @ 7010'

