

UNITED STATES
DEPARTMENT OF THE INTERIOR
GEOLOGICAL SURVEY

30-045-20534

APPLICATION FOR PERMIT TO DRILL, DEEPEN, OR PLUG BACK

1a. TYPE OF WORK

DRILL ☒

DEEPEN ☐

PLUG BACK ☐

b. TYPE OF WELL

OIL
WELL ☐

GAS
WELL ☒

OTHER

SINGLE
ZONE ☒

MULTIPLE
ZONE ☐

2. NAME OF OPERATOR

Aztec Oil and Gas

3. ADDRESS OF OPERATOR

Drawer 570, Farmington, New Mexico

4. LOCATION OF WELL (Report location clearly and in accordance with any State requirements.)*
At surface

890 FNL & J170 FEL, Sec. 19-31N -10W

At proposed prod. zone

14. DISTANCE IN MILES AND DIRECTION FROM NEAREST TOWN OR POST OFFICE*

15. DISTANCE FROM PROPOSED*

LOCATION TO NEAREST
PROPERTY OR LEASE LINE, FT.
(Also to nearest drig. unit line, if any)

16. NO. OF ACRES IN LEASE

17. NO. OF ACRES ASSIGNED
TO THIS WELL

160

18. DISTANCE FROM PROPOSED LOCATION*
TO NEAREST WELL, DRILLING, COMPLETED,
OR APPLIED FOR, ON THIS LEASE, FT.

19. PROPOSED DEPTH

2775

20. ROTARY OR CABLE TOOLS

rotary

21. ELEVATIONS (Show whether DF, RT, GR, etc.)

5972 Gr

22. APPROX. DATE WORK WILL START*

23.

PROPOSED CASING AND CEMENTING PROGRAM

SIZE OF HOLE	SIZE OF CASING	WEIGHT PER FOOT	SETTING DEPTH	QUANTITY OF CEMENT
12-1/4"	8-5/8"	24#	115'	60 sx
6-3/4"	4-1/2"	9.5#	2775'	250 sx

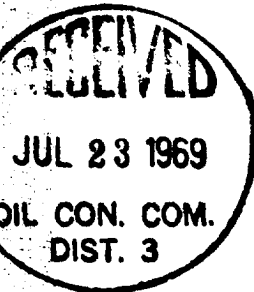
Propose to:

Drill 12-1/4" hole to 115' run 8-5/8" surface pipe cement w/60 sx
Drill 6-3/4" hole to TD 2775, run 4-1/2" cement w/250 sx
Run Induction Electric log
Perforate and frac Pictured Cliffs
Run 1" tubing.

RECEIVED

JUL 22 1969

U. S. GEOLOGICAL SURVEY
FARMINGTON, N. M.



Proration unit: NE/4 Sec. 19-31N-10W - 160 ac.

IN ABOVE SPACE DESCRIBE PROPOSED PROGRAM: If proposal is to deepen or plug back, give data on present productive zone and proposed new productive zone. If proposal is to drill or deepen directionally, give pertinent data on subsurface locations and measured and true vertical depths. Give blowout preventer program, if any.

24.

SIGNED

Joe C. Delmon (S)

TITLE District Superintendent

DATE 7-21-69

(This space for Federal or State office use)

PERMIT NO.

APPROVAL DATE

APPROVED BY

GA

TITLE

DATE

CONDITIONS OF APPROVAL, IF ANY:

**NEW MEXICO OIL CONSERVATION COMMISSION
WELL LOCATION AND ACREAGE DEDICATION PLAT**

Form C-102
Supersedes C-128
Effective 1-1-65

All distances must be from the outer boundaries of the Section

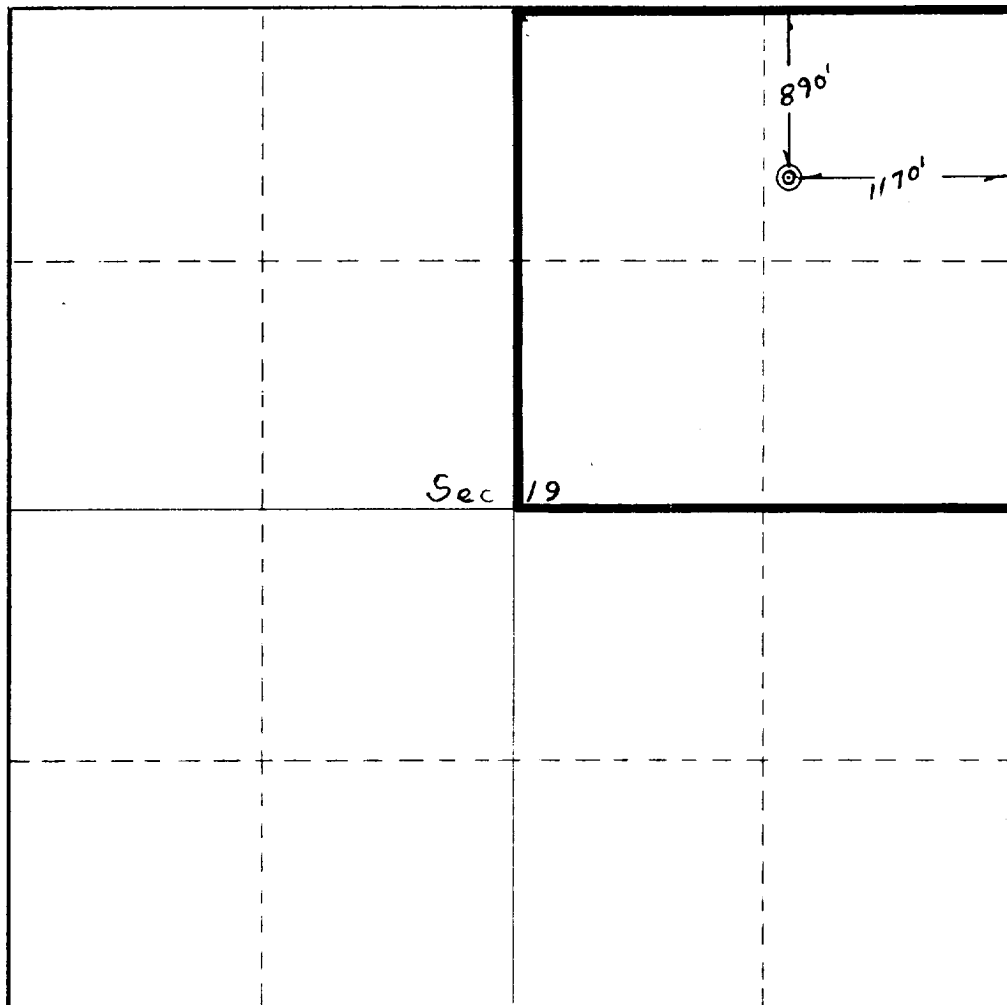
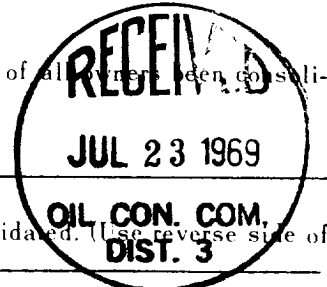
Operator Aztec Oil & Gas Company			Lease <i>Crandell</i>		Well No. <i>4</i>
Unit Letter A	Section 19	Township 31N	Range 10W	County San Juan	
Actual Footage Location of Well: <div style="display: flex; justify-content: space-between;"> 890 feet from the North line and 1170 feet from the East line </div>					
Ground Level Elev. 5972	Producing Formation Pictured Cliffs	Pool <i>Pictured Cliffs</i>		Dedicated Acreage: <i>160</i> Acres	

- Outline the acreage dedicated to the subject well by colored pencil or hachure marks on the plat below.
- If more than one lease is dedicated to the well, outline each and identify the ownership thereof (both as to working interest and royalty).
- If more than one lease of different ownership is dedicated to the well, have the interests of all owners been consolidated by communitization, unitization, force-pooling, etc?

☐ Yes ☐ No If answer is "yes," type of consolidation _____

If answer is "no," list the owners and tract descriptions which have actually been consolidated. (Use reverse side of this form if necessary.) _____

No allowable will be assigned to the well until all interests have been consolidated (by communitization, unitization, forced-pooling, or otherwise) or until a non-standard unit, eliminating such interests, has been approved by the Commission.



CERTIFICATION

I hereby certify that the information contained herein is true and complete to the best of my knowledge and belief.

Name
Joe C. Salmon

Position
District Superintendent

Company
Aztec Oil and Gas

Date
July 11, 1969

I hereby certify that the well location shown on this plat was plotted from field notes of actual surveys made by me or under my supervision, and that the same is true and correct to the best of my knowledge and belief.

Date Surveyed
June 27, 1969

Registered Professional Engineer
or Licensed Surveyor
Fred B. Merr Jr.

Certification No.
3950

0 330 660 990 1320 1650 1980 2310 2640 2970 3300 3630 3960 4290 4620 4950 5280 5610 5940 6270 6600