

UNITED STATES
DEPARTMENT OF THE INTERIOR
GEOLOGICAL SURVEY

30-045-21681

APPLICATION FOR PERMIT TO DRILL, DEEPEN, OR PLUG BACK

1a. TYPE OF WORK

DRILL ☒DEEPEN ☐PLUG BACK ☐

b. TYPE OF WELL

OIL
WELL ☒GAS
WELL ☐

OTHER

SINGLE
ZONE ☐MULTIPLE
ZONE ☐

2. NAME OF OPERATOR

R. L. Burns Corp.

3. ADDRESS OF OPERATOR

3313 Republic Bank Tower - Dallas, Texas 75201

4. LOCATION OF WELL (Report location clearly and in accordance with any State requirements.)*

At surface

765' FEL and 2150' FNL Sec. 14, T 31N, R 15W

At proposed prod. zone

Straight Hole

14. DISTANCE IN MILES AND DIRECTION FROM NEAREST TOWN OR POST OFFICE*

Approx. 18 miles NW of Farmington, New Mexico

15. DISTANCE FROM PROPOSED*

LOCATION TO NEAREST
PROPERTY OR LEASE LINE, FT. 765' FEL
(Also to nearest drilg. unit line, if any)

16. NO. OF ACRES IN LEASE

640

17. NO. OF ACRES ASSIGNED
TO THIS WELL

40

18. DISTANCE FROM PROPOSED LOCATION*

TO NEAREST WELL, DRILLING, COMPLETED,
OR APPLIED FOR, ON THIS LEASE, FT.

None

19. PROPOSED DEPTH

2,600'±

20. ROTARY OR CABLE TOOLS

Rotary

21. ELEVATIONS (Show whether DF, RT, GR, etc.)

5859' Gr

22. APPROX. DATE WORK WILL START*

Jan. 15, 1975

23.

PROPOSED CASING AND CEMENTING PROGRAM

SIZE OF HOLE	SIZE OF CASING	WEIGHT PER FOOT	SETTING DEPTH	QUANTITY OF CEMENT
9-3/4	8-5/8	32#	150'	Circulated to surface
7-7/8	5-1/2	17#	2500'	1000' Fillup behind pipe

Propose to drill new hole to the base of the Verde-Gallup zone at approximately 2,600 ft. This is a straight hole. 8" Shaffer LWP double hydraulic blowout preventer will be used during drilling.

IN ABOVE SPACE DESCRIBE PROPOSED PROGRAM: If proposal is to deepen or plug back, give data on present productive zone and proposed new productive zone. If proposal is to drill or deepen directionally, give pertinent data on subsurface locations and measured and true vertical depths. Give blowout preventer program, if any.

24.

SIGNED

TITLE

Petroleum Engineer

DATE

Jan. 6, 1974

(This space for Federal or State office use)

PERMIT NO.

APPROVAL DATE

APPROVED BY

TITLE

DATE

CONDITIONS OF APPROVAL, IF ANY:

*See Instructions On Reverse Side

N. MEXICO OIL CONSERVATION COMMISSION
WELL LOCATION AND ACREAGE DEDICATION PLAT

Form C-102
Supersedes C-128
Effective 1-1-55

All distances must be from the outer boundaries of the Section.

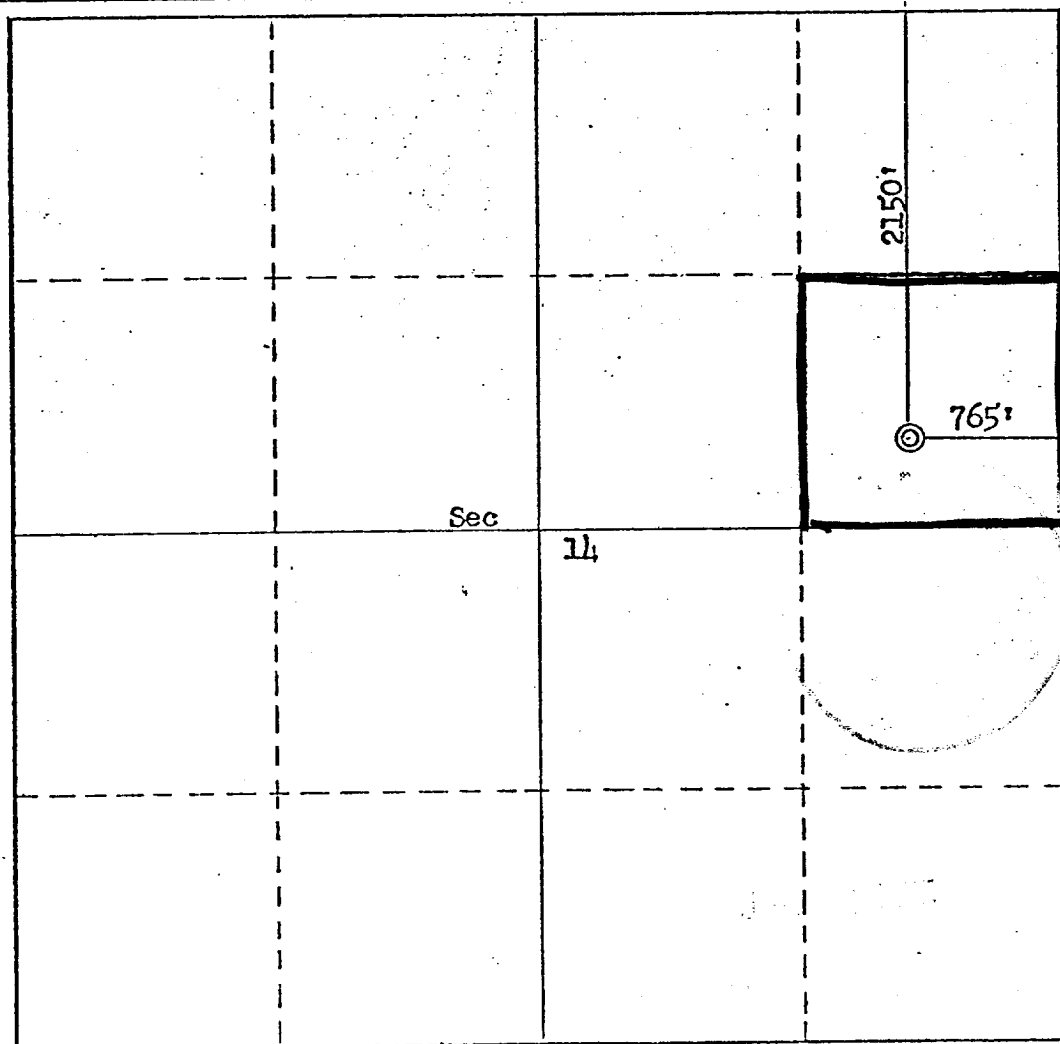
Operator R. L. Burns Corporation			Lease Ute Mountain Tribe Ute 14		Well No. 14-1 Ute #1
Unit Letter H	Section 14	Township 31N	Range 15W	County San Juan	
Actual Footage Location of Well:					
2150 feet from the North line and		765 feet from the East line			
Ground Level Elev. 5859	Producing Formation Verde-Gallup	Pool Verde-Gallup	Dedicated Acreage: 40 Acres		

1. Outline the acreage dedicated to the subject well by colored pencil or hachure marks on the plat below.
2. If more than one lease is dedicated to the well, outline each and identify the ownership thereof (both as to working interest and royalty).
3. If more than one lease of different ownership is dedicated to the well, have the interests of all owners been consolidated by communitization, unitization, force-pooling, etc?

☐ Yes ☐ No If answer is "yes," type of consolidation _____

If answer is "no," list the owners and tract descriptions which have actually been consolidated. (Use reverse side of this form if necessary.) _____

No allowable will be assigned to the well until all interests have been consolidated (by communitization, unitization, forced-pooling, or otherwise) or until a non-standard unit, eliminating such interests, has been approved by the Commission.



CERTIFICATION

I hereby certify that the information contained herein is true and complete to the best of my knowledge and belief.

Name John D. Dutton
 Position Petroleum Engineer
 Company R. L. Burns Corp.
 Date January 6, 1975

I hereby certify that the well location shown on this plat was plotted from field notes of actual surveys made by me or under my supervision, and that the same is true and correct to the best of my knowledge and belief.

Date Surveyed January 3, 1975
 Registered Professional Engineer and/or Land Surveyor
Fred B. Kerr, Jr.
 Certificate No. 3950

