

OIL CONSERVATION COMMISSION
ARIZONA DISTRICT

OIL CONSERVATION COMMISSION
BOX 2088
SANTA FE, NEW MEXICO

DATE October 27, 1975

RE: Proposed MC _____
Proposed DHC _____
Proposed NSL ✓ _____
Proposed SWD _____
Proposed WFX _____
Proposed PMX _____

ATTN: Jim Kapteina

Gentlemen:

I have examined the application dated October 8, 1975
for the Northwest Pipeline Corp. San Juan 32.7 Unit #29 A-18-32N-7
Operator Lease and Well No. Unit, S-T-R

and my recommendations are as follows:

approve

Yours very truly,

AR Kendrick

Northwest Pipeline Corporation



PRODUCTION & DRILLING
P. O. BOX 90
FARMINGTON, NEW MEXICO 87401

October 8, 1975

Mr. Joe Ramey
Secretary-Director
NMOCC
P. O. Box 2088
Santa Fe, New Mexico 87501

Re: "Application for Permit to Drill"
at an unorthodox location for the
San Juan 32-7 Unit #29



Dear Sir:

Attached, you will find the deviation plat with the topography sketched on it. As you can see, in order for the location to be orthodox, it would have to be either on the edge of a cliff or in the river bottom.

In addition, Northwest Pipeline Corporation is the operator of all spacing units surrounding the E/2 of section 18, so no notification of offset operators is needed as required in rule 104 of the New Mexico Oil Conservation Commission Rules and Regulations. Also, you will find a lease holders plat attached.

Thank you for your cooperation.

Sincerely,

D. H. Maroncelli

DHM/mag

xc: File

NEW MEXICO OIL CONSERVATION COMMISSION
WELL LOCATION AND ACREAGE DEDICATION PLAT

Form C-102
Supersedes C-128
Effective 1-1-65

All distances must be from the outer boundaries of the Section.

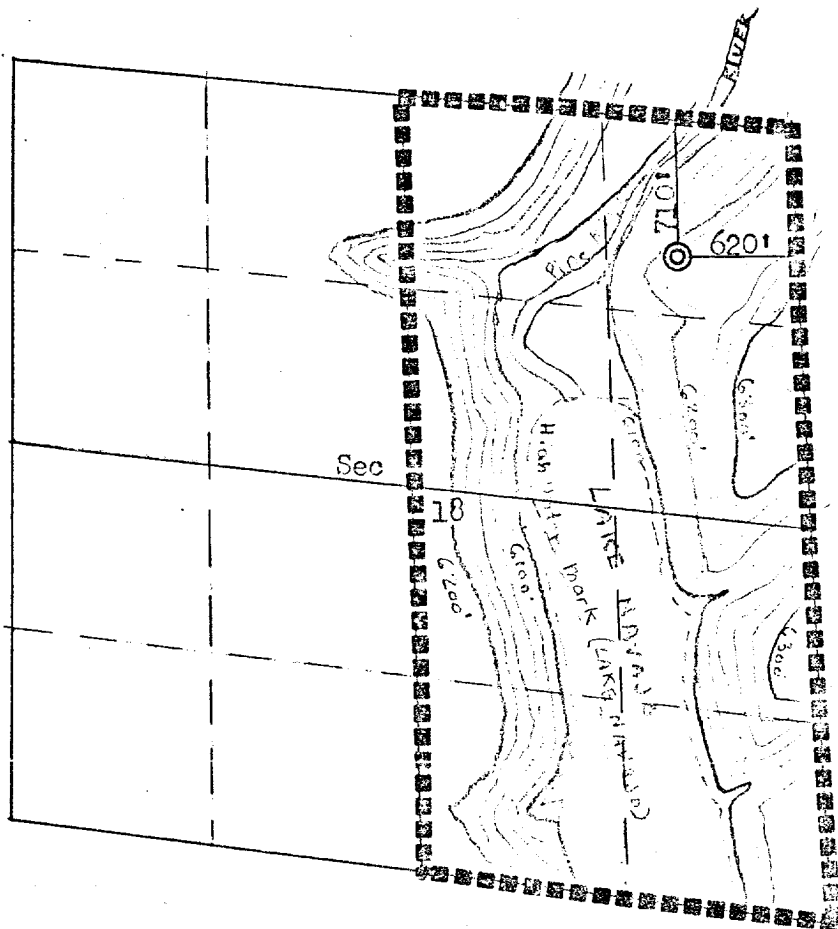
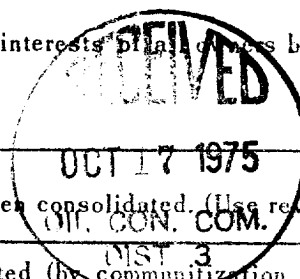
Operator Northwest Pipeline Corporation			Lease San Juan 32-7 Unit		Well No. 29
Unit Letter A	Section 18	Township 32N	Range 7W	County San Juan	
Actual Footage Location of Well: 710 feet from the North line and 620 feet from the East line					
Ground Level Elev: 6252	Producing Formation Mesa Verde		Pool Blanco Mesa Verde		Dedicated Acreage: 320 Acres

1. Outline the acreage dedicated to the subject well by colored pencil or hachure marks on the plat below.
2. If more than one lease is dedicated to the well, outline each and identify the ownership thereof (both as to working interest and royalty).
3. If more than one lease of different ownership is dedicated to the well, have the interests of all owners been consolidated by communitization, unitization, force-pooling, etc?

☐ Yes ☐ No If answer is "yes," type of consolidation _____

If answer is "no," list the owners and tract descriptions which have actually been consolidated. (Use reverse side of this form if necessary.) _____

No allowable will be assigned to the well until all interests have been consolidated (by communitization, unitization, forced-pooling, or otherwise) or until a non-standard unit, eliminating such interests, has been approved by the Commission.



Scale: 1"=1320'

CERTIFICATION

I hereby certify that the information contained herein is true and complete to the best of my knowledge and belief.

D. H. Maroncelli

Name

D. H. Maroncelli

Position

Petroleum Engineer

Company

Northwest Pipeline Corp.

Date

October 7, 1975

I hereby certify that the well location shown on this plat was plotted from field notes of actual surveys made by me or under my supervision, and that the same is true and correct to the best of my knowledge and belief.

Date Surveyed

August 9, 1975

Registered Professional Engineer and/or Land Surveyor

Fred B. Kerr
Fred B. Kerr

Certificate No.

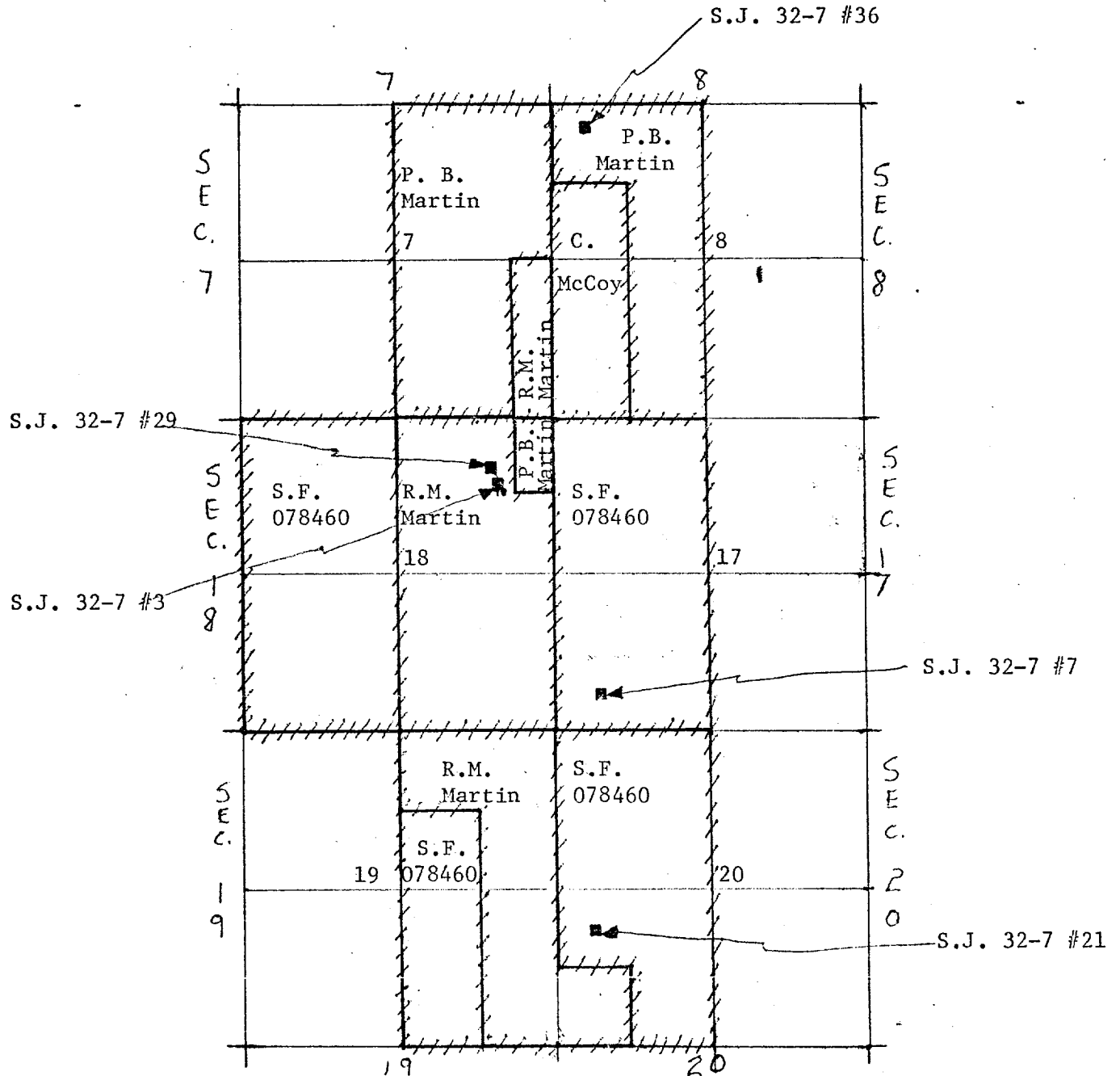
3950

Northwest Pipeline Corporation



PRODUCTION & DRILLING
P. O. BOX 90
FARMINGTON, NEW MEXICO 87401

LEASE HOLDERS PLAT



SCALE 1" = 1320'

