

UNITED STATES
DEPARTMENT OF THE INTERIOR
GEOLOGICAL SURVEY

30-045-23192
5. LEASE DESIGNATION AND SERIAL NO.

M00-C-1420-1717

6. IF INDIAN, ALLOTTEE OR TRIBE NAME

Mountain Ute

7. UNIT AGREEMENT NAME

8. FARM OR LEASE NAME

Ute 11

9. WELL NO.

24

10. FIELD AND POOL, OR WILDCAT

Verde Gallup

11. SEC., T., R., M., OR BLK. AND SURVEY OR AREA

S.11-T31N-R15W

12. COUNTY OR PARISH 13. STATE

San Juan

NM

APPLICATION FOR PERMIT TO DRILL, DEEPEN, OR PLUG BACK

1a. TYPE OF WORK

DRILL

DEEPEN

PLUG BACK

b. TYPE OF WELL

OIL WELL

GAS WELL

OTHER

SINGLE ZONE

MULTIPLE ZONE

2. NAME OF OPERATOR

Energetics, Inc.

3. ADDRESS OF OPERATOR

333 W. Hampden Ave., Ste. 1010, Englewood, Colorado 80110

4. LOCATION OF WELL (Report location clearly and in accordance with any State requirements.*)

At surface 1950' FSL & 1990' FEL

At proposed prod. zone Same

14. DISTANCE IN MILES AND DIRECTION FROM NEAREST TOWN OR POST OFFICE*

10. DISTANCE FROM PROPOSED* LOCATION TO NEAREST PROPERTY OR LEASE LINE, FT. (Also to nearest drlg. unit line, if any)

16. NO. OF ACRES IN LEASE

640

18. DISTANCE FROM PROPOSED LOCATION* TO NEAREST WELL, DRILLING, COMPLETED, OR APPLIED FOR, ON THIS LEASE, FT.

19. PROPOSED DEPTH

3000

17. NO. OF ACRES ASSIGNED TO THIS WELL

40

20. ROTARY OR CABLE TOOLS

Rotary & Cable Tools

21. ELEVATIONS (Show whether DF, RT, GR, etc.)

5999 9.L

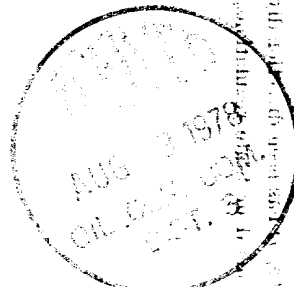
22. APPROX. DATE WORK WILL START*

September 30, 1978

23. PROPOSED CASING AND CEMENTING PROGRAM

SIZE OF HOLE	SIZE OF CASING	WEIGHT PER FOOT	SETTING DEPTH	QUANTITY OF CEMENT
12 1/4	8 5/8	32	100	100 sk.
7 7/8	5 1/2	15.5	2800	330 sk.
4 3/4	Open Hole		2800-3000	

(See Attachments)



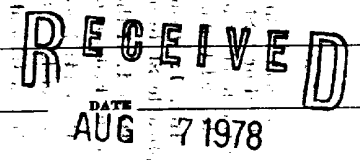
IN ABOVE SPACE DESCRIBE PROPOSED PROGRAM: If proposal is to deepen or plug back, give data on present productive zone and proposed new productive zone. If proposal is to drill or deepen directionally, give pertinent data on subsurface locations and measured and true vertical depths. Give blowout preventer program, if any.

24. SIGNED John Alexander TITLE Agent DATE 8-2-78
(This space for Federal or State office use)

PERMIT NO. _____ APPROVAL DATE _____

APPROVED BY _____ TITLE _____ DATE AUG 7 1978

ok Frank



U. S. GEOLOGICAL SURVEY
DURANGO, COLO.

NEW MEXICO OIL CONSERVATION COMMISSION
WELL LOCATION AND ACREAGE DEDICATION PLAT

Form C-102
Supersedes C-12B
Effective 1-1-65

All distances must be from the outer boundaries of the Section.

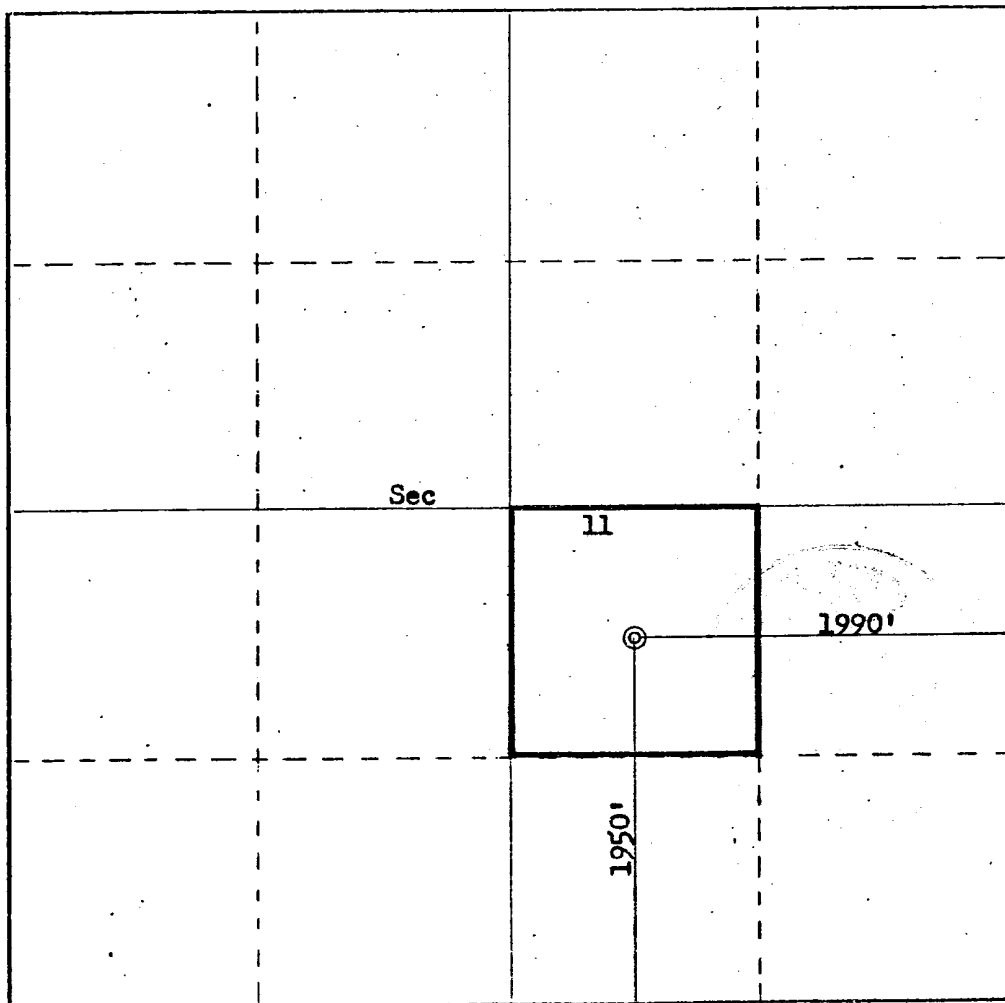
Operator ENERGETICS, INC.		Lease UTE 11		Well No. 24
Unit Letter J	Section 11	Township 31N	Range 15W	County San Juan
Actual Footage Location of Well: 1950 feet from the South line and 1990 feet from the East line				
Ground Level Elev. 5999	Producing Formation Gallup	Pool Verde Gallup	Dedicated Acreage: 40 Acres	

1. Outline the acreage dedicated to the subject well by colored pencil or hachure marks on the plat below.
2. If more than one lease is dedicated to the well, outline each and identify the ownership thereof (both as to working interest and royalty).
3. If more than one lease of different ownership is dedicated to the well, have the interests of all owners been consolidated by communitization, unitization, force-pooling, etc?

Yes No If answer is "yes," type of consolidation _____

If answer is "no," list the owners and tract descriptions which have actually been consolidated. (Use reverse side of this form if necessary.) _____

No allowable will be assigned to the well until all interests have been consolidated (by communitization, unitization, forced-pooling, or otherwise) or until a non-standard unit, eliminating such interests, has been approved by the Commission.



CERTIFICATION

I hereby certify that the information contained herein is true and complete to the best of my knowledge and belief.

John Alexander
Name

John Alexander
Position

Agent

Company
Energetics, Inc.

Date
8/2/78

I hereby certify that the well location shown on this plat was plotted from field notes of actual surveys made by me or under my supervision, and that the same is true and correct to the best of my knowledge and belief.

Date Survey
July 14, 1978

Registered Professional Geologist
and of Land Surveyor

Fred B. Kerr Jr.
Fred B. Kerr Jr.

Certification No. KERR, 11
3950

ENERGETICS, INC.

FORMATION INFORMATION AND DRILLING PRACTICES

WELL:

Ute 11 No. 24

LOCATION:

1950' FSL & 1990' FEL

S11-T31N-R15W

San Juan Co., NM

LEASE NUMBER:

M00-C-1420-1717

1) Surface formation:

Menefee

2) Estimated tops of important geologic markers:

Point Lookout	1042
Mancos	1432
Gallup	2800

3) Hydro carbon, water or mineral bearing formation:

2800' Oil

4) Proposed casing program:

0-100' 8 5/8, 32#, new casing. Cement with 100 sk. Class B + 2% CaCl₂.

0-2800 5½, 15.5#, new casing. Cement with 230 sk. Halliburton Light with 6¼ lb. Gilsonite/sk. followed by 100 sk. Class B + 2% CaCl₂ with 6¼ lb. Gilsonite/sk.

2800-3000 Open hole (drill with Cable tool)

5) Specifications for pressure control equipment:

The attached schematic shows the type of blow out preventer to be used while drilling. The unit will be tested to 200 psi. as soon as possible after its installation on the surface pipe. Testing will be done with the rig pump. This is a manual type preventer, and its operation will be manually checked when practical.

6) Drilling fluids:

Depth	Type	Viscosity	Weight	Fluid Loss
0-100	Gel-Lime	35-55	8.9-9.2	N/C
100-2800	Gel-Chem	30-40	8.6-9.5	10
2800-3000	Water			

7) Auxiliary equipment:

- (a) bit float
- (b) full opening valve for stabbing in drill pipe when the kelly is not in use

8) Logging - Coring - Drill Stem Testing:

Logging: Induction Electric Log, Formation Compensated Density, Gamma Ray, Caliper

Coring: None

Drill Stem Testing: None

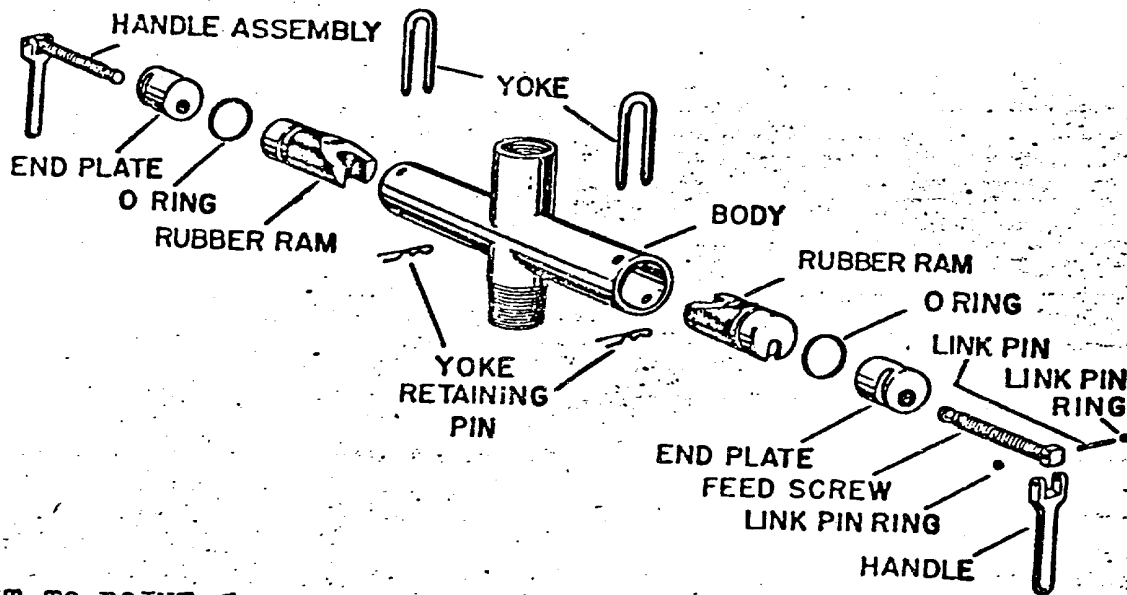
9) Abnormal temperatures, pressures, or hazardous conditions:

None expected.

10) Starting Date:

Anticipated starting date is September 30, 1978. Approximately 15 days will be needed to build roads and location and drill the well to total depth. If commercial, completion will commence immediately and require approximately 7 days to complete.

BLOWOUT PREVENTERS



ATTACHMENT TO POINT 5
API SERIES 6" 600

ENERGETICS, INC.

SURFACE DEVELOPMENT PLAN

WELL:

Ute 11 #24

LOCATION:

1950' FSL & 1990' FEL

S11-T31N-R15W

San Juan Co., NM

LEASE NUMBER:

M00-C-1420-1717

1) Existing roads: (Shown in green.)

The attached topographic map shows all existing roads within one mile of the proposed location. Access will be made to a county road 2 miles south of the location.

Some existing roads are in poor condition and will have to be upgraded to handle normal drilling activity traffic.

2) Planned access road: (Shown in red.)

The planned access road will be approximately $\frac{1}{4}$ mile long and 20' wide. Maximum grade will be 5%. No turnouts or culverts will be required. Water bars will be used to aid drainage and prevent erosion. No surfacing material will be required. No gates, cattle guards, or fences will be crossed. No cuts or fills should be required.

3) Location of existing wells:

All wells (water, abandoned, disposal, and drilling) are shown and so labeled on the attached section layout.

4) Location of tank batteries, production facilities and production, gathering and service lines:

All production facilities are to be contained within the proposed location. Energetics does not own or control any such facilities in the area.

5) Location and type of water supply:

Water for drilling will be trucked from the San Juan River located 15 miles southeast of location. This water is not on federal land.

6) Source of construction material:

Any construction material required for road or location will be excess material accumulated during building of such sites.

7) Methods of handling waste disposal:

(Refer to attached well site layout.)

All burnable material will be burned in the trash pit when conditions permit. All nonburnable material (drilling fluids, cuttings, chemicals, etc.) will be held in the reserve pit and buried when dry. Any oil produced while drilling will be trucked from the location prior to leaving the pit to dry. Pits will be fenced during dryout time, the completely back filled with dirt prior to preparing the location for production or abandonment.

8) Ancillary facilities:

No ancillary facilities are planned.

9) Well site layout:

The attached layout shows the drilling rig with all facilities. Cut and fill required is also indicated.

10) Plans for restoration of surface:

Restoration of well site and access road will begin within 90 days of well completion, weather permitting.

Should the well be abandoned, the drilling site will be reshaped to its approximate former contour. The access road will be plowed and leveled. Both site and road will have top soil replaced and will be reseeded when germination can occur.

Should the well be commercial, that portion of the location, not needed for operation, will be repaired as above. The portion needed for daily production operations, and the access road, will be maintained in good repair.

In either case, clean up of the site will include burning any safely burnable material, filling of all pits, carrying away of all nonburnable material and chemicals that can not be buried. Any oil that has accumulated on the pits will be trucked away.

11) Other information:

General topography of the area may be seen on the attached map.

The drilling site is on a northeast slope and is covered with sage brush and other native grasses. There are no creeks, rivers or ponds in the area. The soil is sandy loam. Small animals and sheep inhabit the area.

The surface is administered by The Bureau of Indian Affairs, and belongs to the Ute Mountain Tribe.

There are no occupied dwellings in the area.

There are no archaeological or cultural sites visible on the location. The archaeologist report is forthcoming.

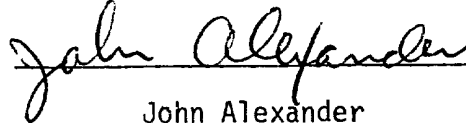
12)

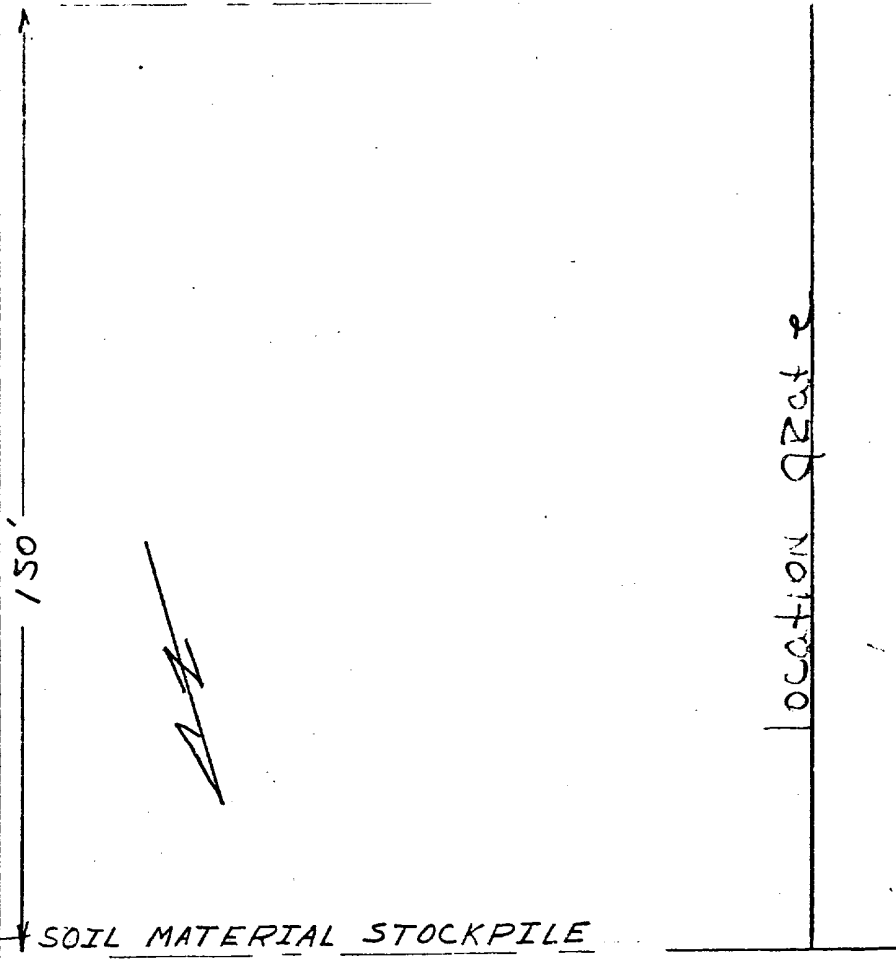
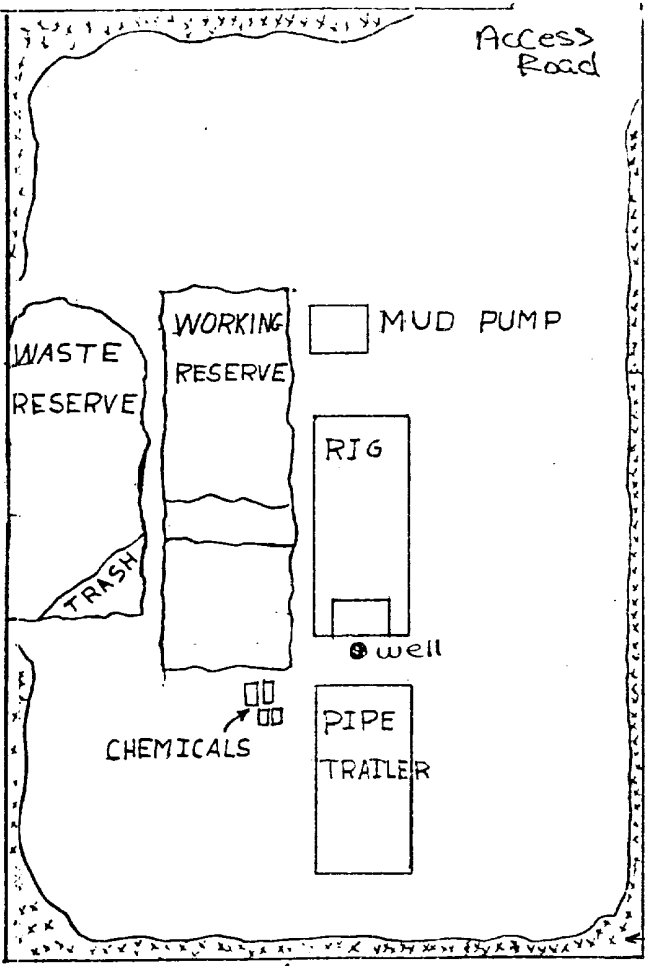
John Alexander
3E Company, Inc.
P.O. Box 190
Farmington, NM 87401
Phone : 505-327-4920

13)

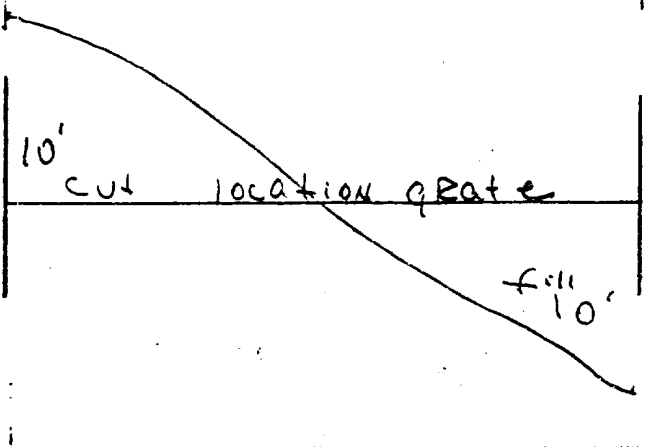
I hereby certify that I or persons under my direct supervision, have inspected the proposed drill site and access route; that I am familiar with the conditions which presently exist; that the statements made in the plan are to the best of my knowledge, true and correct; and, that the work associated with the operations proposed herein will be performed by Energetics, Inc. and its contractors and sub-contractors in conformity with this plan and the terms and conditions under which it is approved.

8-3-78


John Alexander



PLAN VIEW 1"=30'
ALL PITS-EARTHEN



WELL SITE LAYOUT
ENERGETICS INC.
UTE 11 #24

OFFSET WELLS

COMPANY:

ENERGETIC AM

WELL:

WTE # 24
 / 1930 REC 4 / 1990 REC
 11-30-1502
 saw lean, 15M

3	J	I	L	K	J	I	L	K	L	K
	O	P	M	N	O	P	M	N	M	N
	B	A	O	C	B	A	O	C	O	A
	C	M	E ^A	F	C	M	E ^A	F	E	F
10	J	I	L	K	J	I	L	K	L	K
	O	P	M	N	O	P	M	N	M	N
	B	A	O	C	B	A	O	C	O	A
15	C	M	E ^A	F	C	M	E ^A	F	E	F

o subject well

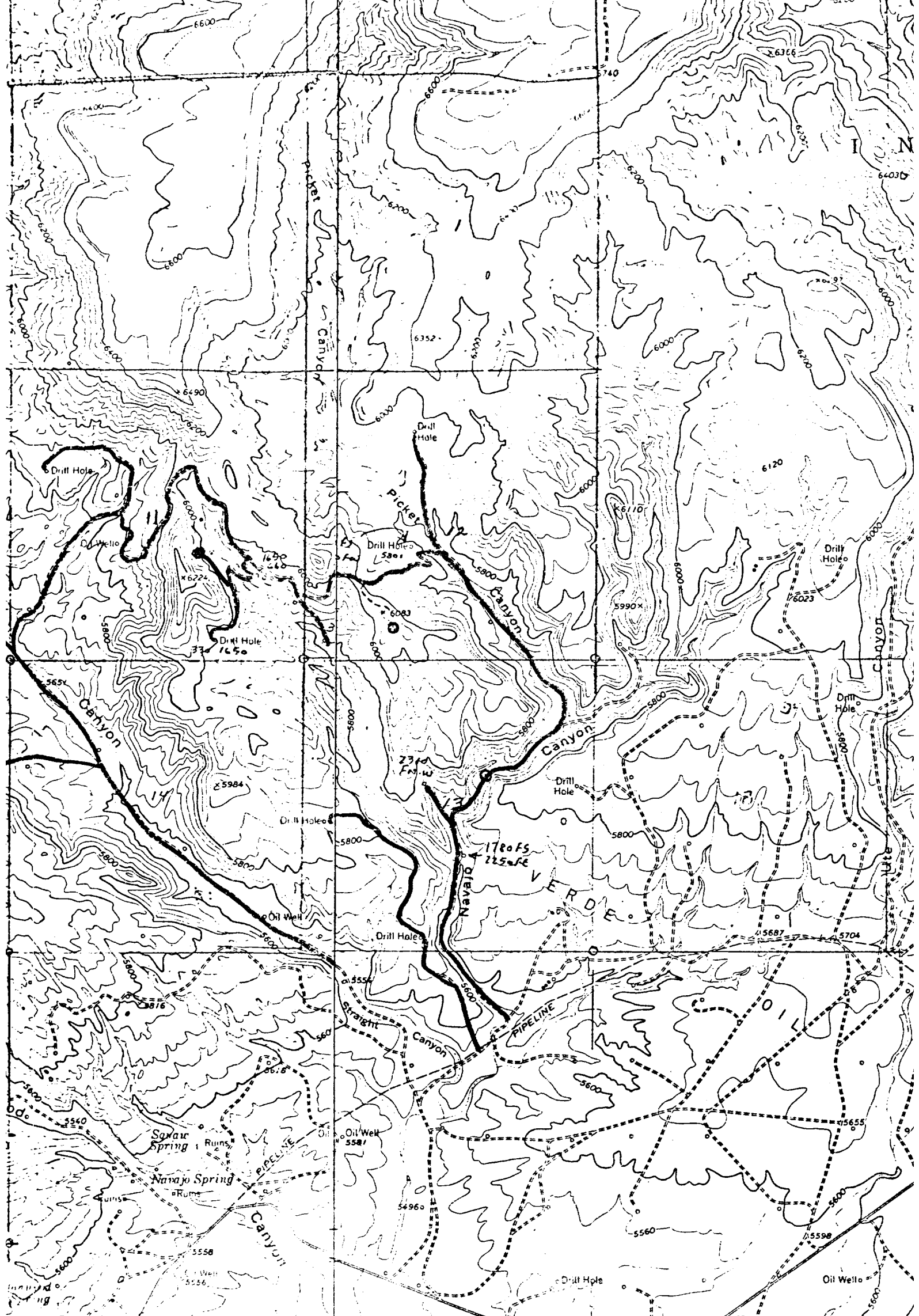
△ Pugged

○ Active

12

13

14



107°22'30" W 35°55' N 12 MI TO US 550 736 1350000 FEET (4 MEN)

Mapped, edited, and published by the Geological Survey

FRAG CLASSIFICATION

Vicinity Map for
 ENERGEN, INCORPORATED #24 Ute 11
 1950/01 1990/FEL Sec 11-T31N-R15W
 SAN JUAN COUNTY, NEW MEXICO

