

UNITED STATES  
DEPARTMENT OF THE INTERIOR  
GEOLOGICAL SURVEY

## APPLICATION FOR PERMIT TO DRILL, DEEPEN, OR PLUG BACK

## 1a. TYPE OF WORK

DRILL ☒DEEPEN ☐PLUG BACK ☐

## b. TYPE OF WELL

OIL  
WELL ☐GAS  
WELL ☒

OTHER

SINGLE  
ZONE ☐MULTIPLE  
ZONE ☐

## 2. NAME OF OPERATOR

Bruce Anderson

## 3. ADDRESS OF OPERATOR

Box 208, Farmington, NM 87401

## 4. LOCATION OF WELL (Report location clearly and in accordance with any State requirements.)\*

At surface

990' FSL - 880' FWL

At proposed prod. zone

## 14. DISTANCE IN MILES AND DIRECTION FROM NEAREST TOWN OR POST OFFICE

10 miles NW of Farmington, NM

## 15. DISTANCE FROM PROPOSED\*

LOCATION TO NEAREST

PROPERTY OR LEASE LINE, FT.

(Also to nearest drlg. unit line, if any)

990'

## 18. DISTANCE FROM PROPOSED LOCATION\*

TO NEAREST WELL, DRILLING, COMPLETED,  
OR APPLIED FOR, ON THIS LEASE, FT.

466;

## 16. NO. OF ACRES IN LEASE

1487.06

## 19. PROPOSED DEPTH

1650'

17. NO. OF ACRES ASSIGNED  
TO THIS WELL

89.56

## 20. ROTARY OR CABLE TOOLS

Rotary

## 21. ELEVATIONS (Show whether DF, RT, GR, etc.)

5722' GL

## 22. APPROX. DATE WORK WILL START\*

ASAP

## 23.

## PROPOSED CASING AND CEMENTING PROGRAM

SIZE OF HOLE	SIZE OF CASING	WEIGHT PER FOOT	SETTING DEPTH	QUANTITY OF CEMENT
7-7/8"	7"	20#	90'	35 sx
4-3/4"	2-7/8"	6.4#	1650'	160 sx

Plan to drill 4-3/4" hole to test the Pictured Cliffs Formation. Plan to run IES log to TD. If productive, plan to set 2-7/8" tbq for csg, cement, selectively perforate, frac, clean out after frac, run 1-1/4" tbq and complete well.

Plan to use 3000 psi BOP per attached schematic diagram. Will use master valve and stripper head while completing well.

NMERB: Gas Dedicated

IN ABOVE SPACE DESCRIBE PROPOSED PROGRAM: If proposal is to deepen or plug back, give data on present productive zone and proposed new productive zone. If proposal is to drill or deepen directionally, give pertinent data on subsurface locations and measured and true vertical depths. Give blowout preventer program, if any.

## 24.

SIGNED

Thomas A. Dugan

TITLE

Agent

DATE

6-10-80

(This space for Federal or State office use)

PERMIT NO.

APPROVAL DATE

APPROVED BY

TITLE

CONDITIONS OF APPROVAL, IF ANY:

\*See Instructions On Reverse Side

NMOC

30-045-24620  
5. LEASE DESIGNATION AND SERIAL NO.

NM 053798

6. IF INDIAN, ALLOTTEE OR TRIBE NAME

7. UNIT AGREEMENT NAME

8. FARM OR LEASE NAME

9. WELL NO.

#6

10. FIELD AND POOL, OR WILDCAT

Wildcat PC

11. SEC., T., R., M., OR BLK.  
AND SURVEY OR AREA

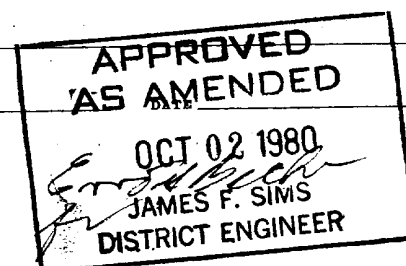
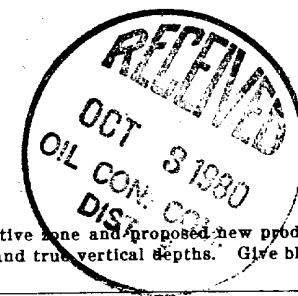
Sec 30 T31N R13W

12. COUNTY OR PARISH

13. STATE

San Juan

NM



Hold for NSP

**NEW MEXICO OIL CONSERVATION COMMISSION  
WELL LOCATION AND ACREAGE DEDICATION PLAT**

Form C-102  
Supersedes C-128  
Effective 1-1-65

All distances must be from the outer boundaries of the Section.

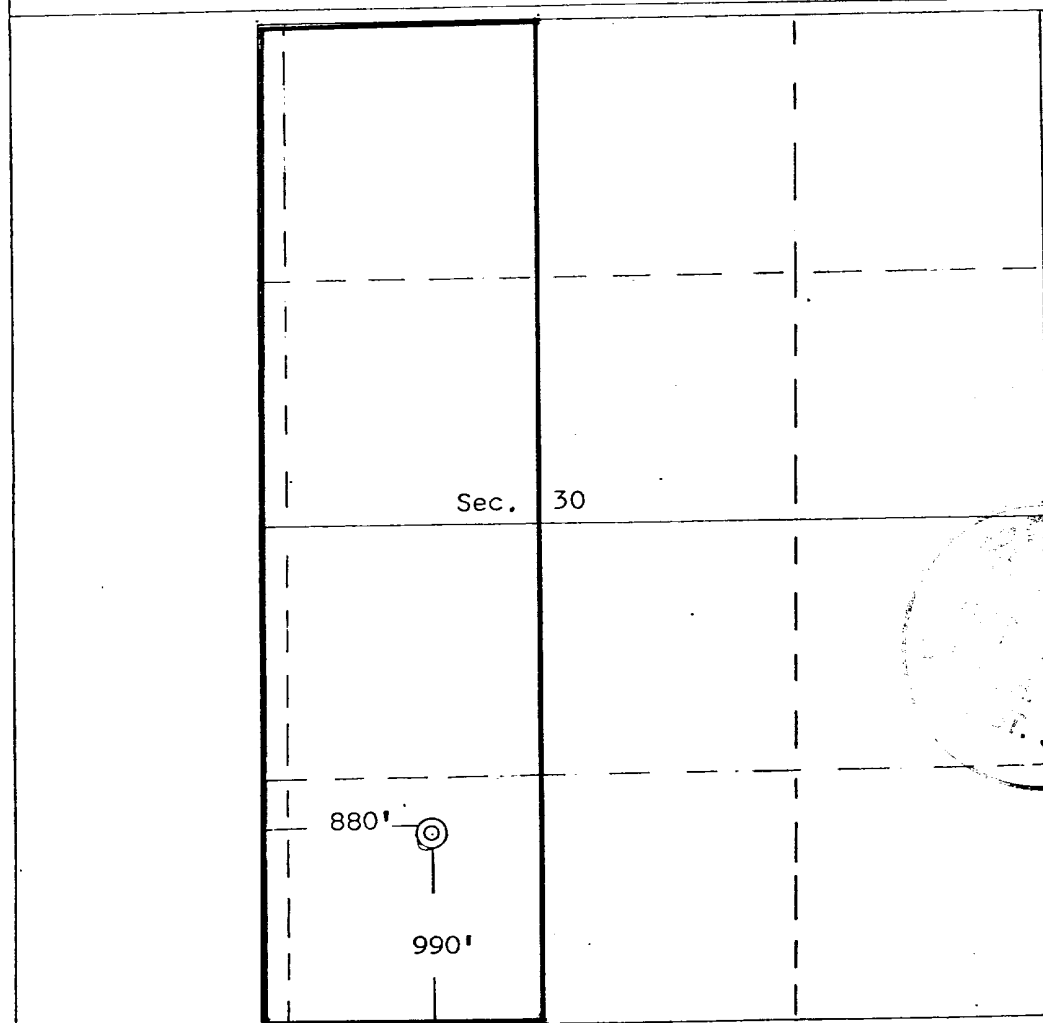
Operator <b>Bruce Anderson</b>			Lease <b>Federal</b>		Well No. <b>#6</b>
Unit Letter <b>N</b>	Section <b>30</b>	Township <b>31 North</b>	Range <b>13 West</b>	County <b>San Juan</b>	
Actual Footage Location of Well: <div style="display: flex; justify-content: space-between;"> <span>990 feet from the</span> <span><b>South</b> line and</span> <span>880 feet from the</span> <span><b>West</b> line</span> </div>					
Ground Level Elev. <b>5722</b>	Producing Formation <b>Pictured Cliffs</b>	Pool <b>Wildcat</b>	Dedicated Acreage: <b>89.56</b> Acres		

1. Outline the acreage dedicated to the subject well by colored pencil or hachure marks on the plat below.
2. If more than one lease is dedicated to the well, outline each and identify the ownership thereof (both as to working interest and royalty).
3. If more than one lease of different ownership is dedicated to the well, have the interests of all owners been consolidated by communitization, unitization, force-pooling, etc?

☐ Yes    ☐ No    If answer is "yes," type of consolidation \_\_\_\_\_

If answer is "no," list the owners and tract descriptions which have actually been consolidated. (Use reverse side of this form if necessary.) \_\_\_\_\_

No allowable will be assigned to the well until all interests have been consolidated (by communitization, unitization, forced-pooling, or otherwise) or until a non-standard unit, eliminating such interests, has been approved by the Commission.



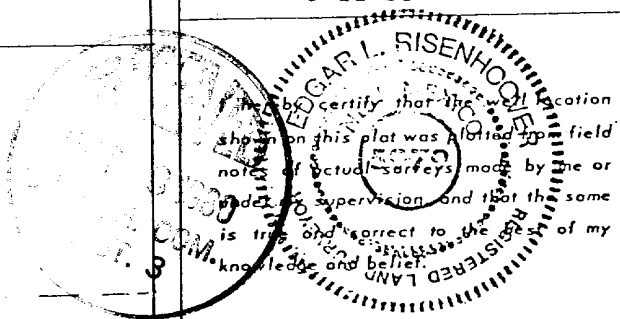
**CERTIFICATION**

I hereby certify that the information contained herein is true and complete to the best of my knowledge and belief.

*Thomas A. Dugan*  
 Name: **Thomas A. Dugan**  
 Position: **Agent**

Company: **Bruce Anderson**

Date: **6-11-80**



Date Surveyed:  
**May 31, 1980**

Registered Professional Engineer  
and/or Land Surveyor

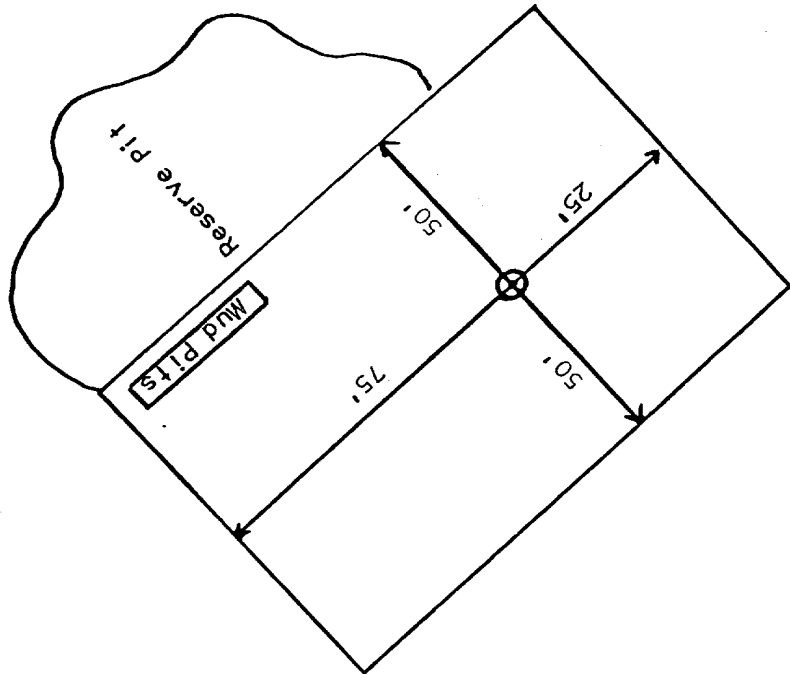
*Edgar L. Risenhoover*  
 Certificate No. **5979**

**Edgar L. Risenhoover, L.S.**

Bruce Anderson

Federal #6

PROPOSED LOCATION LAYOUT

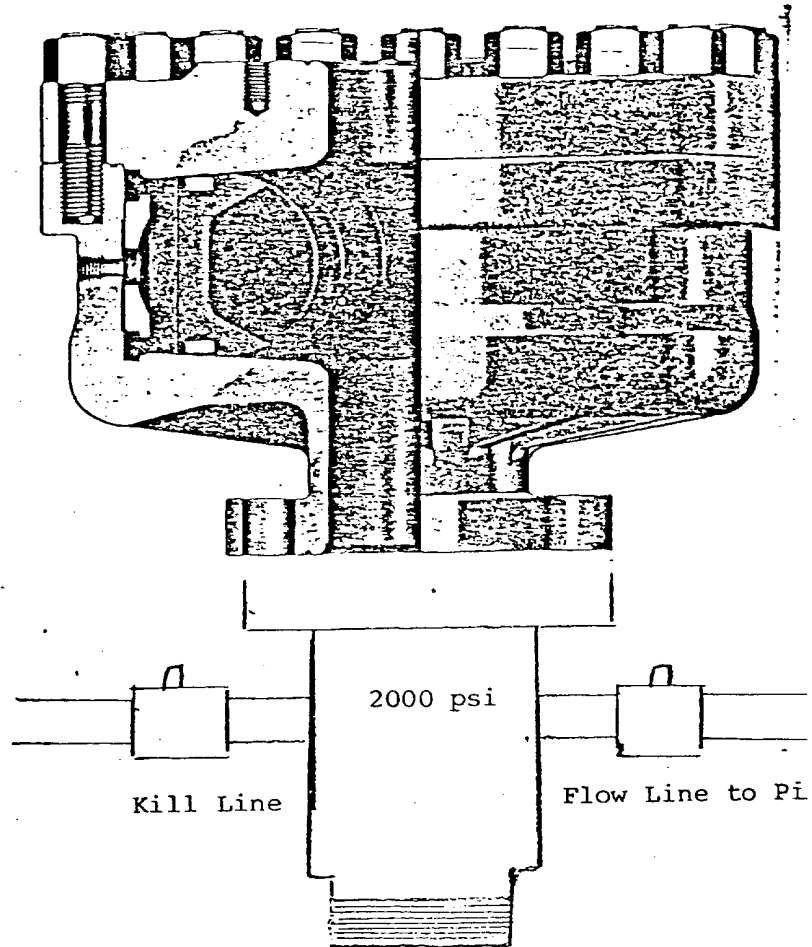


## SCHEMATIC DIAGRAM

### TESTING PROCEDURES

Install BOP after setting surface pipe and pressure test to 1000 psi after drilling out from under surface pipe.

## REGAN BLOWOUT PREVENTERS



The Regan Torus Blowout Preventer is used primarily on production and workover rigs for well control up to 3000 PSI working pressure

### DESIGN FEATURES

- a. The Torus Preventer is designed for minimum height to facilitate its use with production and workover rigs.
- b. The rubber packer will conform to any object in the well bore. Sealing ability is not affected by minor damage to the inner bore.
- c. The packer will seal on open hole at full working pressure.
- d. The dual packer design increases the reliability of the preventer since the outer rubber is never exposed to the well bore. Under ordinary service, the outer packer is rarely replaced.

TORUS BLOWOUT PREVENTER  
PATENTED

### SPECIFICATIONS

Nominal Size	Test Pressure (psi)	DIMENSIONS (In.)			Weight (lb.)	End Flanges (I)	R/RX Ring Grooves	Side Outlet
		Outside Diameter	Thru Bore	Overall Height				
6	3000	27	7 1/4	19 1/4	1360	Nom. 6	45	None
	6000	28 3/4	7 1/4	21 1/4	1950	Nom. 6	45	2" L.P.

## OPERATIONS PLAN

OPERATOR: Bruce Anderson  
WELL NAME: Federal #6  
FIELD: Wildcat PC  
LOCATION: 990' FSL - 880' FWL      Sec 30 T31N R13W      San Juan County, NM  
ELEVATION: 5722' GL

EXPECTED FORMATION TOPS:	Ojo Alamo	surface	Point Lookout
	Kirtland	689'	Mancos
	Fruitland	951'	Gallup
	Pictured Cliffs	1577'	Greenhorn
	Lewis		Graneros
	Cliff House		Dakota
	Menefee		Total Depth    1650'

LOGGING PROGRAM: IES

SAMPLES: Catch samples in 10' intervals beginning at 1500'

### CASING PROGRAM

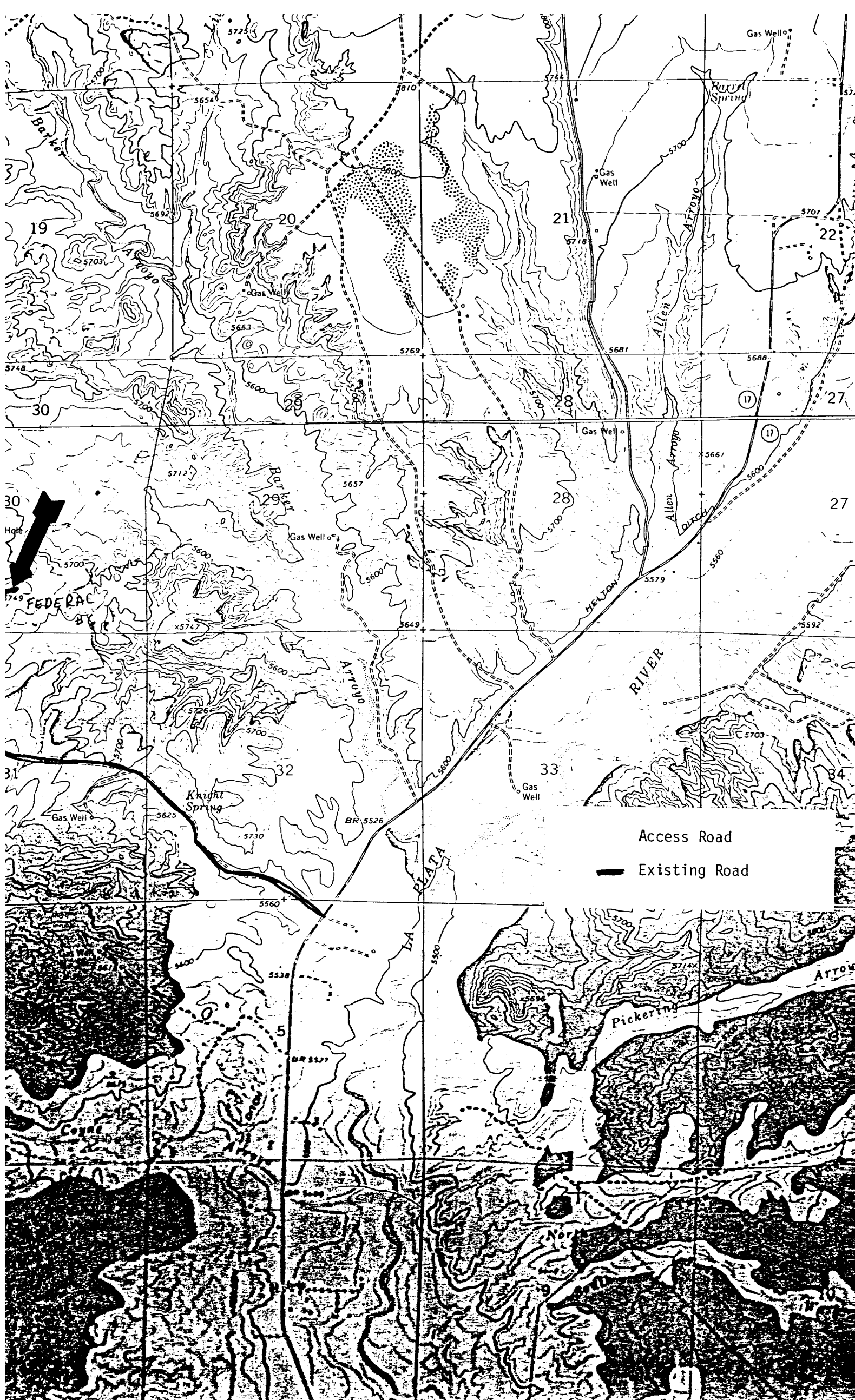
<u>Hole Size</u>	<u>Depth</u>	<u>Csg Size, Wt, Grade, &amp; Condition</u>	<u>Cementing Program</u>
7-7/8"	90'	7"    20#    J-55    New	Cement w/35 sx of neat cement. Circulate to surface
4-3/4"	1650'	2-7/8"    6.4#    J-55    New	Cement w/90 sx of 2% lodense w/1/4# cello flake per sx followed by 70 sx class "B" neat w/1/4# cello flake per sx

### WELLHEAD EQUIPMENT

Non-flanged, screwed, 2000# working pressure

Office	-	325-0238
Tom Dugan		325-5694
Jim Jacobs		325-8353
Sherman Dugan		327-4287
Bill Donovan		325-5692
James Hazen		

T  
31  
N



DEVELOPMENT PLAN

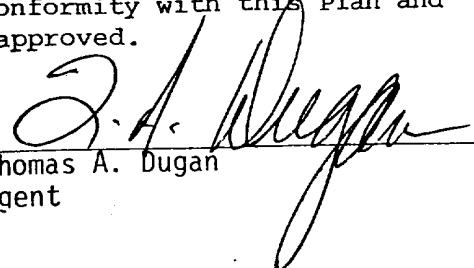
Bruce Anderson

Federal #6

1. Existing roads and existing wells are shown on attached plat.
2. Planned access from existing road approximately 0' to new location. Will leave natural grass and small vegetation on roadway. Will remove large brush or trees from road. Do not plan to make road grade or bar ditches. Will bottom-out any arroyo we cross and not install culverts.
3. Location of well: 990' FSL - 880' FWL  
Sec 30 T31N R13W  
San Juan County, NM
4. Two additional well(s) planned on this lease at this time.
5. Separator and flow line will be located within 50' of wellhead.
6. Water will be secured from La Plata River.
7. Waste materials will be buried on location or in reserve pit.
8. No permanent camp is planned; trailer house will be used on location while drilling.
9. Do not plan to build airstrip.
10. See attached plat for proposed location layout.
11. A general description of the topography, soil characteristics, geologic features, flora and fauna; other surface-use activities and surface ownership of involved lands, proximity of water, occupied dwellings, archeological, historical or cultural sites can be found in the archeologist's report.
12. Geologic name of surface formation: Ojo Alamo, river gravel terrace
13. Estimated tops of important geologic markers:  
See Attached Operations Plan
14. Estimated depths of anticipated water, oil, gas, or other mineral bearing formations which are expected to be encountered: water - surface  
gas - PC - 1577'
15. We do not anticipate to encounter any abnormal pressures or temperatures or any potential hazards such as those associated with hydrogen sulfide.
16. Will clean up location, fill and level pits, level ruts in road, reseed location and road with Seed Mixture #2 and paint equipment with Pinon green.
17. Operator's Representative:  
Thomas A. Dugan  
Box 208  
Farmington, NM 87401
18. Certification: The following statement must be signed by the lessee's or operator's field representative who is identified in Item #17 of the Plan:

I hereby certify that I, or persons under my direct supervision, have inspected the proposed drillsite and access route; that I am familiar with the conditions which presently exist; that the statements made in this Plan are, to the best of my knowledge, true and correct; and, that the work associated with the operations proposed herein will be performed by Bruce Anderson and its contractors and subcontractors in conformity with this Plan and the terms and conditions under which it is approved.

Date: 6-10-80

  
Thomas A. Dugan  
Agent