

UNITED STATES  
DEPARTMENT OF THE INTERIOR  
GEOLOGICAL SURVEY

## APPLICATION FOR PERMIT TO DRILL, DEEPEN, OR PLUG BACK

1a. TYPE OF WORK  
DRILL ☒ DEEPEN ☐ PLUG BACK ☐

b. TYPE OF WELL  
OIL WELL ☐ GAS WELL ☒ OTHER ☐ SINGLE ZONE ☒ MULTIPLE ZONE ☐

2. NAME OF OPERATOR  
El Paso Natural Gas Company

3. ADDRESS OF OPERATOR  
PO Box 289, Farmington, NM 87401

4. LOCATION OF WELL (Report location clearly and in accordance with any State requirements.)\*  
At surface 1600'S, 810'W  
At proposed prod. zone same

14. DISTANCE IN MILES AND DIRECTION FROM NEAREST TOWN OR POST OFFICE\*  
6 miles south of Allison, CO

15. DISTANCE FROM PROPOSED\* LOCATION TO NEAREST PROPERTY OR LEASE LINE, FT. (Also to nearest drlg. unit line, if any)  
810'

16. NO. OF ACRES IN LEASE  
unit

17. NO. OF ACRES ASSIGNED TO THIS WELL  
S/317

18. DISTANCE FROM PROPOSED LOCATION\* TO NEAREST WELL, DRILLING, COMPLETED, OR APPLIED FOR, ON THIS LEASE, FT.  
2600'

19. PROPOSED DEPTH  
6260'

20. ROTARY OR CABLE TOOLS  
Rotary

21. ELEVATIONS (Show whether DF, RT, GR, etc.)  
6567' GL

22. APPROX. DATE WORK WILL START\*

23. PROPOSED CASING AND CEMENTING PROGRAM				
SIZE OF HOLE	SIZE OF CASING	WEIGHT PER FOOT	SETTING DEPTH	QUANTITY OF CEMENT
13 3/4"	9 5/8"	36.0#	200'	224 cu.ft. to circulate
8 3/4"	7"	20.0#	3790'	431 cu.ft. to cover Ojo Alam
6 1/4"	4 1/2" liner	10.5#	3640-6260'	457 cu.ft. to circ. liner

Selectively perforate and sandwater fracture the Mesa Verde formation.

A 3000 psi WP and 6000 psi test gas gate preventer equipped with blind and pipe rams will be used for blowout prevention on this well.

This gas is dedicated.

This is a non-administrative  
appeal pursuant to 30 CFR 290.

The S/2 of Section 30 is dedicated to this well.

IN ABOVE SPACE DESCRIBE PROPOSED PROGRAM: If proposal is to deepen or plug back, give data on present productive zone and proposed new productive zone. If proposal is to drill or deepen directionally, give pertinent data on subsurface locations and measured and true vertical depths. Give blowout preventer program, if any.

24. SIGNED D. G. Enisco TITLE Drilling Clerk DATE 11-3-80

(This space for Federal or State office use)

PERMIT NO. APPROVED APPROVAL DATE AS AMENDED

APPROVED BY JAMES F. SIMS TITLE NMOCC DATE FEB 06 1981

DISTRICT ENGINEER

\*See Instructions On Reverse Side

**MEXICO OIL CONSERVATION COMMISSION**  
**WELL LOCATION AND ACREAGE DEDICATION PLAT**

Form C-102  
 Supersedes C-128  
 Effective 1-1-55

All distances must be from the outer boundaries of the Section.

Operator <b>EL PASO NATURAL GAS COMPANY</b>		Lease <b>ALLISON UNIT (SF-081155)</b>		Well No. <b>44</b>
Unit Letter <b>L</b>	Section <b>30</b>	Township <b>32-N</b>	Range <b>6-W</b>	County <b>SAN JUAN</b>
Actual Footage Location of Well: <b>1600</b> feet from the <b>SOUTH</b> line and <b>810</b> feet from the <b>WEST</b> line				
Ground Level Elev. <b>6567</b>	Producing Formation <b>MESA VERDE</b>	Pool <b>BLANCO MESA VERDE</b>	Dedicated Acreage: <b>317.00</b> Acres	

1. Outline the acreage dedicated to the subject well by colored pencil or hachure marks on the plat below.
2. If more than one lease is dedicated to the well, outline each and identify the ownership thereof (both as to working interest and royalty).
3. If more than one lease of different ownership is dedicated to the well, have the interests of all owners been consolidated by communitization, unitization, force-pooling, etc?

☒ Yes    ☐ No    If answer is "yes," type of consolidation Unitization

If answer is "no," list the owners and tract descriptions which have actually been consolidated. (Use reverse side of this form if necessary.) \_\_\_\_\_

No allowable will be assigned to the well until all interests have been consolidated (by communitization, unitization, forced-pooling, or otherwise) or until a non-standard unit, eliminating such interests, has been approved by the Commission.

NOTE: THIS PLAT IS REISSUED TO SHOW CHANGE FROM DAKOTA FORMATION TO MESA VERDE FORMATION. 9-10-80

**RECEIVED**

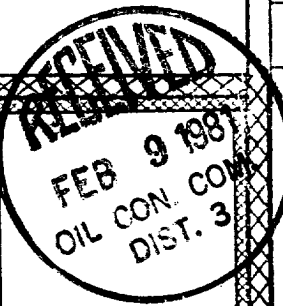
**NOV 7 1980**

U. S. GEOLOGICAL SURVEY  
 FARMINGTON, N. M.

SF-081155

NM-04207

FEE



**CERTIFICATION**

I hereby certify that the information contained herein is true and complete to the best of my knowledge and belief.

*A. J. Brisco*

Name  
 Drilling Clerk

Position  
 El Paso Natural Gas Co.

Company  
 November 3, 1980

Date

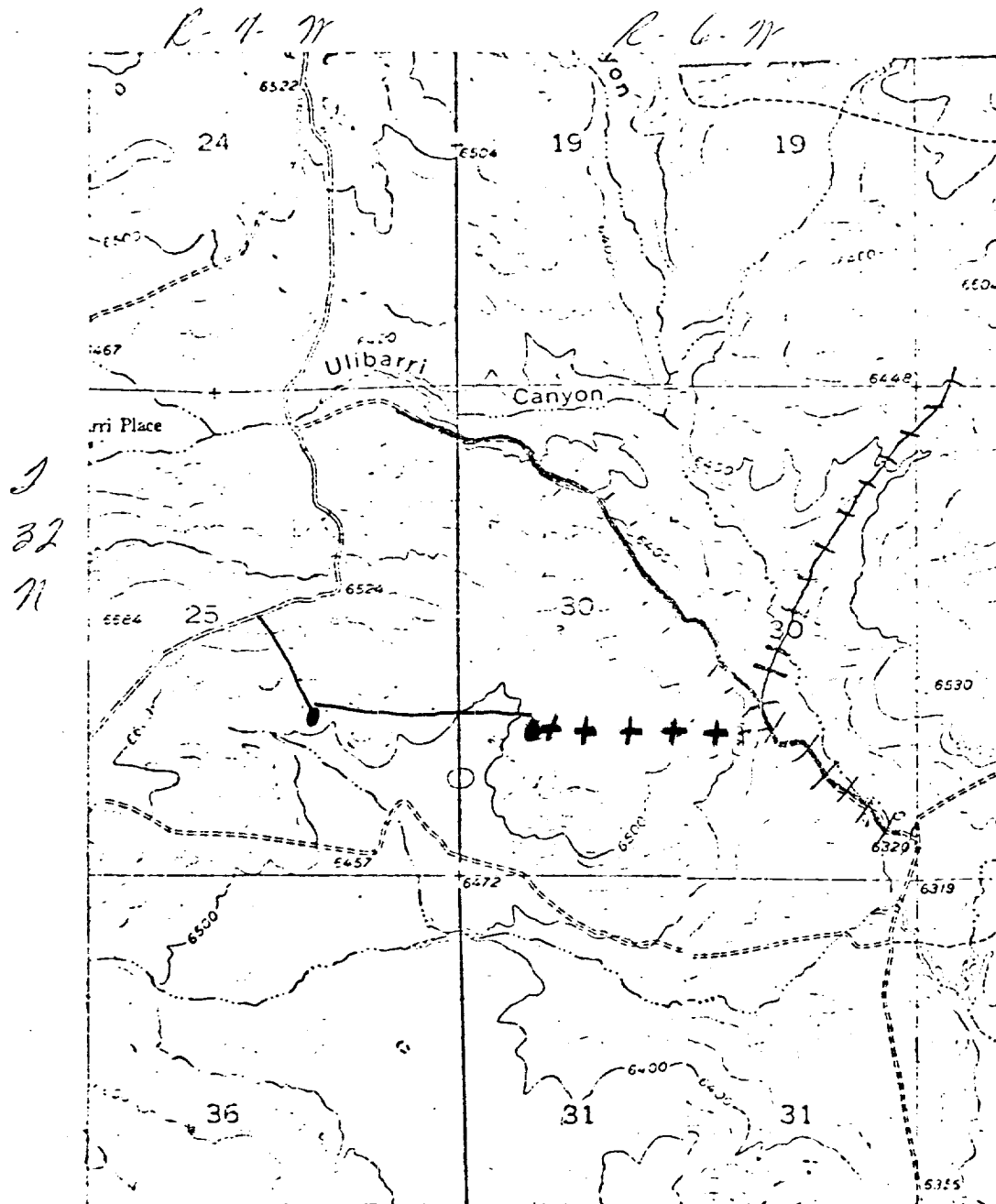
I hereby certify that the well location shown on this plat was plotted from field notes of actual surveys made by me or under my supervision, and that the same is true and correct to the best of my knowledge and belief.

Date Surveyed  
 AUGUST 22, 1974

Registered Professional Engineer  
 and/or Land Surveyor

Certificate No. 1760

Ulrich Unit # 44  
 T4 Sapt Sec. 30, T-32-N, R-6-W



Map #1

# LEGEND OF RIGHT-OF-WAYS

EXISTING ROADS	—
EXISTING PIPELINES	-+ -+ -+
EXISTING ROAD & PIPELINE	+ + + +
PROPOSED ROADS	—
PROPOSED PIPELINES	+ + + +
PROPOSED ROAD & PIPELINE	+ + + +