

UNITED STATES
DEPARTMENT OF THE INTERIOR
GEOLOGICAL SURVEY

30-045-25240

5. LEASE DESIGNATION AND SERIAL NO.

14-20-604-90

6. IF INDIAN, ALLOTTEE OR TRIBE NAME

Ute Mountain

7. UNIT AGREEMENT NAME

8. FARM OR LEASE NAME

Ute "B"

9. WELL NO.

20

10. FIELD AND POOL, OR WILDCAT

Verde Gallup

11. SEC., T., R., M., OR BLK.
AND SURVEY OR AREA

31-31N-15W

12. COUNTY OR PARISH 13. STATE

San Juan

New Mex.

1a. TYPE OF WORK

DRILL ☒DEEPEN ☐PLUG BACK ☐

b. TYPE OF WELL

OIL
WELL ☒CAS
WELL ☐

OTHER

SINGLE
ZONE ☒MULTIPLE
ZONE ☐

2. NAME OF OPERATOR

B.O.A. Oil & Gas Company

3. ADDRESS OF OPERATOR

3539 East 30th Street, Suite 108, Farmington, NM 87401

4. LOCATION OF WELL (Report location clearly and in accordance with any State requirements.)*

At surface

2455' FNL & 1944' FEL

At proposed prod. zone

14. DISTANCE IN MILES AND DIRECTION FROM NEAREST TOWN OR POST OFFICE*

Waterflow, New Mexico - 8 Miles

15. DISTANCE FROM PROPOSED*

LOCATION TO NEAREST
PROPERTY OR LEASE LINE, FT.
(Also to nearest drlg. unit line, if any)

16. NO. OF ACRES IN LEASE

2560

17. NO. OF ACRES ASSIGNED
TO THIS WELL

40

18. DISTANCE FROM PROPOSED LOCATION*
TO NEAREST WELL, DRILLING, COMPLETED,
OR APPLIED FOR, ON THIS LEASE, FT.

19. PROPOSED DEPTH

2000

20. ROTARY OR CABLE TOOLS

Rotary & Cable Tools

21. ELEVATIONS (Show whether DF, RT, GR, etc.)

5459

22. APPROX. DATE WORK WILL START*

11-1-81

23.

PROPOSED CASING AND CEMENTING PROGRAM

SIZE OF HOLE	SIZE OF CASING	WEIGHT PER FOOT	SETTING DEPTH	QUANTITY OF CEMENT
12 1/4	8 5/8	20	100'	75 sacks
6 3/4	5 1/2	14	1600'	175 sacks 2% CACL
4 1/4	Cable Tool	Open Hole	1800'	



IN ABOVE SPACE DESCRIBE PROPOSED PROGRAM: If proposal is to deepen or plug back, give data on present productive zone and proposed new productive zone. If proposal is to drill or deepen directionally, give pertinent data on subsurface locations and measured and true vertical depths. Give blowout preventer program, if any.

24.

SIGNED

TITLE Operator

DATE 10-20-81

(This space for Federal or State office use)

PERMIT NO.

APPROVAL DATE

Original Signed - Paul E. Bodenberger

JOHN L. PRICE

APPROVED BY

TITLE

District Supervisor

DATE NOV 6 1981

CONDITIONS OF APPROVAL, IF ANY:

APPROVED FOR A PERIOD
NOT TO EXCEED 1 YEAR.STIPULATIONS
ATTACHED"APPROVAL TO FLARE GRANTED
WHILE DRILLING AND TESTING"

N.M. Oil & Gas

U. S. GEOLOGICAL SURVEY
OIL AND GAS OPERATIONS
RECEIVED

OCT 29 1981

GRAND JUNCTION, COLORADO

NEW MEXICO OIL CONSERVATION COMMISSION
WELL LOCATION AND ACREAGE DEDICATION PLAT

Form C-100
Supersedes C-128
Effective 1-1-65

All distances must be from the outer boundaries of the Section.

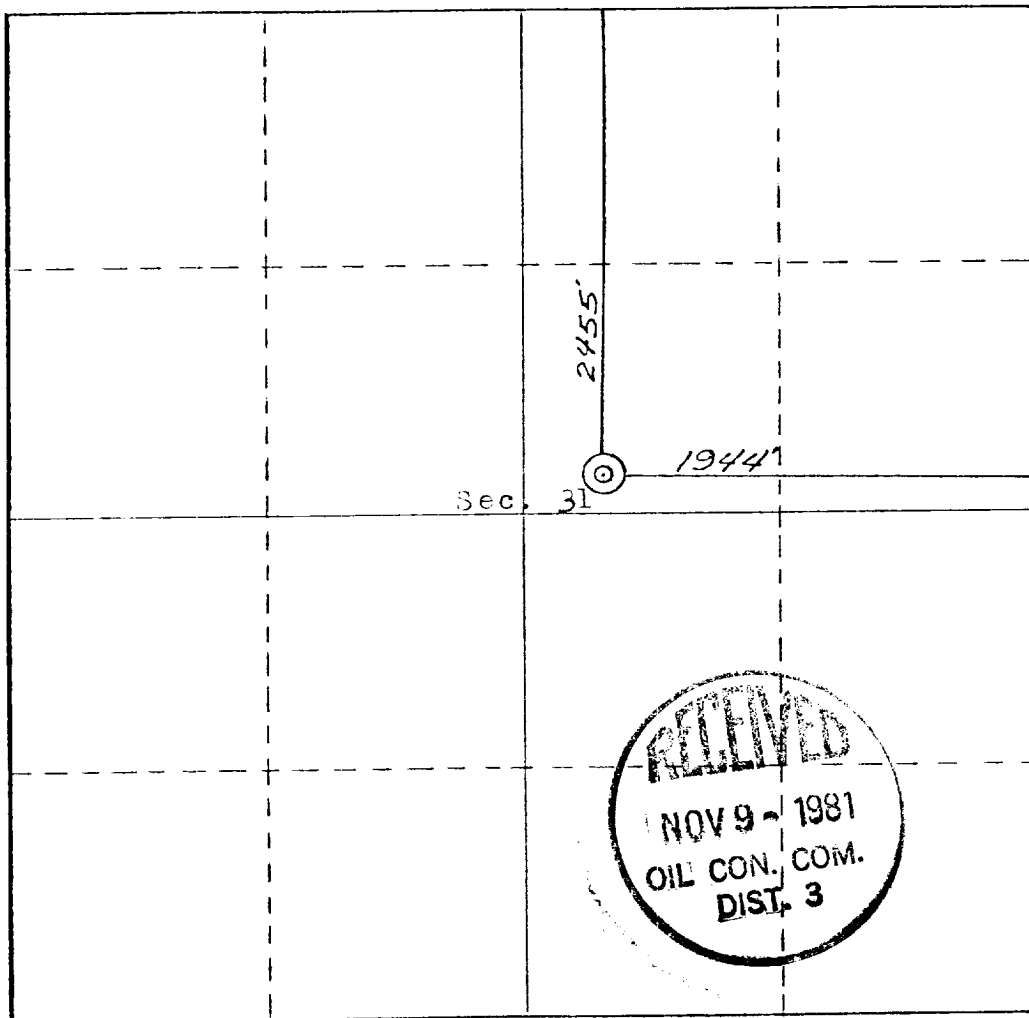
Operator B. O. A. OIL & GAS			Lease		Well No. 20
Unit Letter G	Section 31	Township 31 NORTH	Range 15 WEST	County SAN JUAN	
Actual Footage Location of Well: 2455 feet from the NORTH line and 1944 feet from the EAST line					
Ground Level Elev. 5459	Producing Formation Gallup		Pool Verde Gallup		Dedicated Acreage: 40 Acres

1. Outline the acreage dedicated to the subject well by colored pencil or hachure marks on the plat below.
2. If more than one lease is dedicated to the well, outline each and identify the ownership thereof (both as to working interest and royalty).
3. If more than one lease of different ownership is dedicated to the well, have the interests of all owners been consolidated by communitization, unitization, force-pooling, etc?

☐ Yes ☐ No If answer is "yes," type of consolidation _____

If answer is "no," list the owners and tract descriptions which have actually been consolidated. (Use reverse side of this form if necessary.) _____

No allowable will be assigned to the well until all interests have been consolidated (by communitization, unitization, forced-pooling, or otherwise) or until a non-standard unit, eliminating such interests, has been approved by the Commission.



CERTIFICATION

I hereby certify that the information contained herein is true and complete to the best of my knowledge and belief.

Ralph Abbott
Name

General Partner

Position

B.O.A. Oil & Gas Co.

Company

October 26, 1981

Date

I hereby certify that the well location shown on this plat was plotted from field notes of actual surveys made by me or under my supervision, and that the same is true and correct to the best of my knowledge and belief.

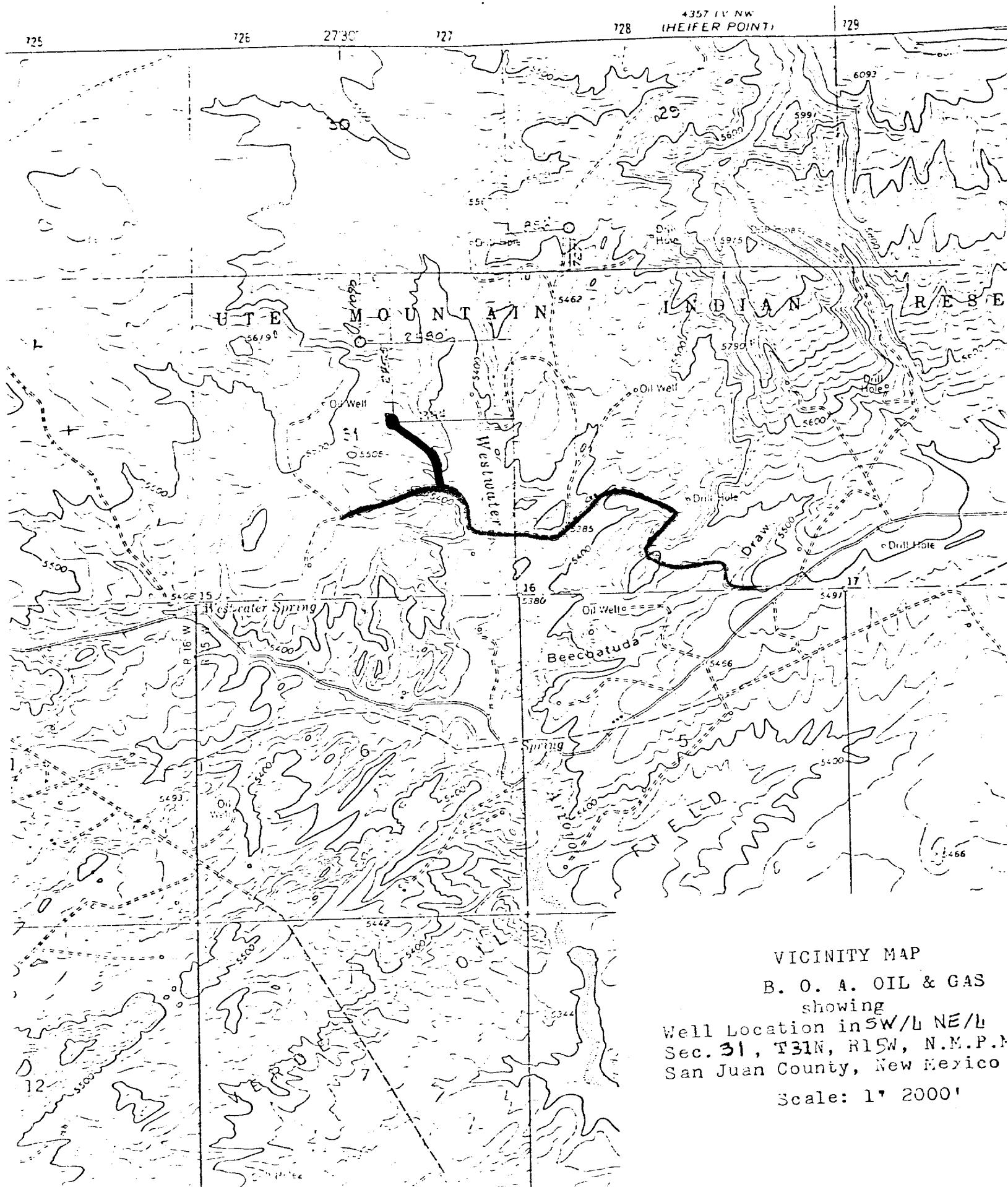
Curtis C. Stocking
REGISTERED LAND SURVEYOR
NEW MEXICO
13-1980

Date Surveyed
Registered Professional Engineer
and/or Land Surveyor

Curtis C. Stocking

Certificate No.

5980 NMLS



VICINITY MAP
B. O. A. OIL & GAS
showing
Well Location in SW/4 NE/4
Sec. 31, T31N, R15W, N.M.P.M.
San Juan County, New Mexico
Scale: 1" = 2000'