

STATE OF NEW MEXICO
ENERGY AND MINERALS DEPARTMENT

OIL CONSERVATION DIVISION

SANTA FE, NEW MEXICO 87501

RECEIVED

AUG 30 1983

OIL CON. DIV.

Form C-101

Revised 10-82

30-045-25799

NO. OF COPIES RECEIVED	
DISTRIBUTION	
SANTA FE	
FILE	
U.S.G.S.	
LAND OFFICE	
OPERATOR	

5A. Indicate Type of Lease
STATE ☐ FEDERAL ☒

5. State Oil & Gas Lease No.

APPLICATION FOR PERMIT TO DRILL, DEEPEN, OR PLUG BACK

1a. Type of Work DRILL <input checked="" type="checkbox"/> DEEPEN <input type="checkbox"/> PLUG BACK <input type="checkbox"/>		7. Unit Agreement Name	
b. Type of Well OIL WELL <input type="checkbox"/> GAS WELL <input checked="" type="checkbox"/> OTHER <input type="checkbox"/>		8. Form or Lease Name Leeper Gas Com. "D"	
2. Name of Operator Amoco Production Company		9. Well No. 1	
3. Address of Operator 501 Airport Drive, Farmington, NM 98401		10. Field and Pool, or Wildcat Mt. Nebo Fruitland	
4. Location of Well UNIT LETTER L LOCATED 1480 FEET FROM THE South LINE AND 800 FEET FROM THE West LINE OF SEC. 34 TWP. 32N RGE. 10W NMPM		12. COUNTY San Juan	
15. Proposed Depth 2646'		19A. Formation Fruitland	
21. Elevations (Show whether DT, RI, etc.) 5838' GL		22. Approx. Date Work will start As Soon As Permitted	
21A. Kind & Status Plug. Bond Statewide		21B. Drilling Contractor Unknown	
23. PROPOSED CASING AND CEMENT PROGRAM		21C. Rotary or C.T. Rotary	

SIZE OF HOLE	SIZE OF CASING	WEIGHT PER FOOT	SETTING DEPTH	SACKS OF CEMENT	EST. TOP
17 1/2"	13 3/8"	54.5# K-55	250'	220	Surface
12 1/4"	9 5/8"	36# (K-55)	2358'	700	Surface
8 3/4"	7" linear	23# (K-55)	2260'-2616'	150	2260'

Amoco proposes to drill the above well to develop the Fruitland Coal gas reserves. The well will be drilled to the surface casing point using native mud. The well will then be drilled to TD with a low solids nondispersed mud system. Completion design will be based on open hole logs. A copy of all logs will be filed upon completion. Amoco's standard blowout prevention will be employed; see attached drawing for blowout preventer design.

The gas from this well is dedicated to El Paso Natural Gas Company under gas sales contract No. 96176.

EXPIRES 1-29-84
UNLESS DRILLING IS COMMENCED.
SPUD NOTICE MUST BE SUBMITTED
WITHIN 10 DAYS.

CONFIDENTIAL

IN ABOVE SPACE DESCRIBE PROPOSED PROGRAM: IF PROPOSAL IS TO DEEPEN OR PLUG BACK, GIVE DATA ON PRESENT PRODUCTIVE ZONE AND PROPOSED NEW PRODUCTIVE ZONE. GIVE BLOWOUT PREVENTER PROGRAM, IF ANY.

I hereby certify that the information above is true and complete to the best of my knowledge and belief.

Signed Dale H. Phamghe Title District Engineer Date 8-23-83

(This space for State Use)

APPROVED BY [Signature] TITLE SUPERVISOR DISTRICT # DATE AUG 30 1983

CONDITIONS OF APPROVAL, IF ANY:

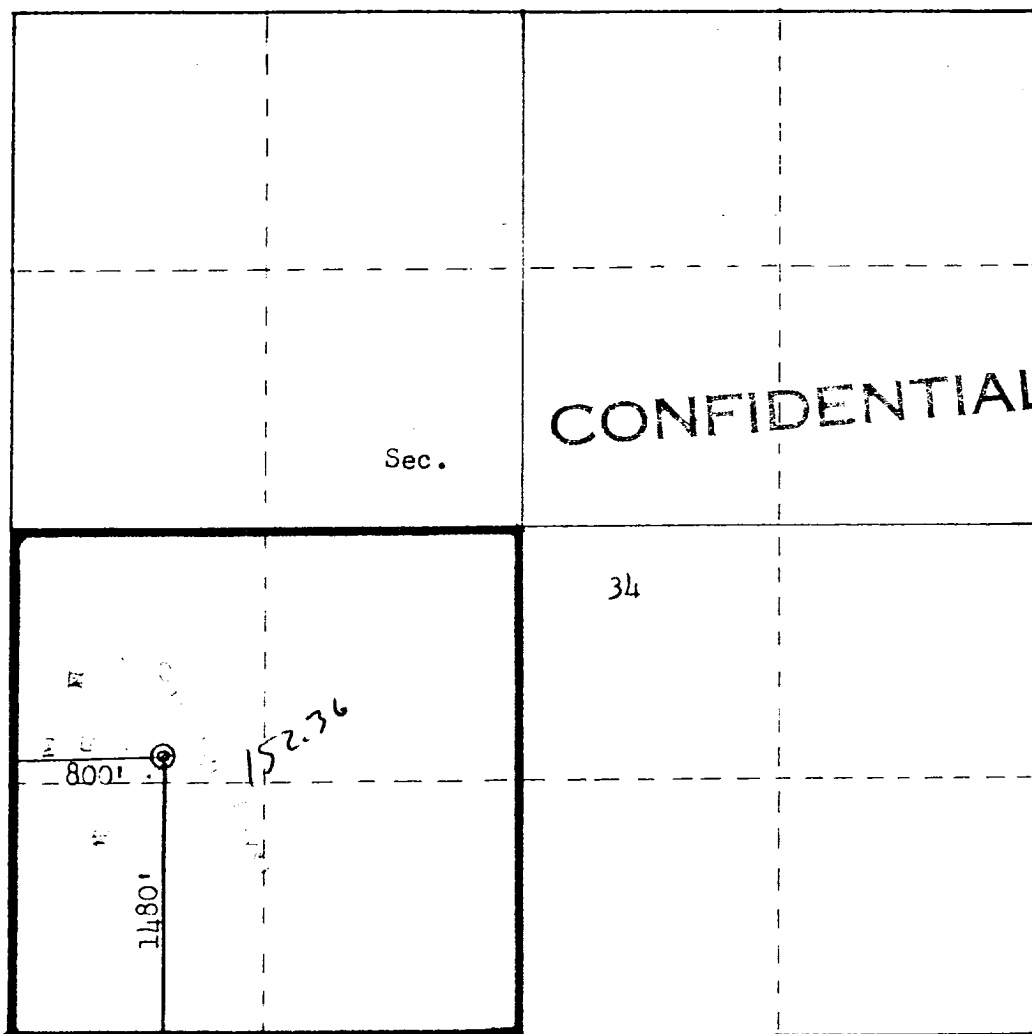
write N & W

OIL CONSERVATION DIVISION

STATE OF NEW MEXICO
ENERGY AND MINERALS DEPARTMENTP. O. BOX 2088
SANTA FE, NEW MEXICO 87501Form C-107
Revised 10-1-78

All distances must be from the outer boundaries of the Section.

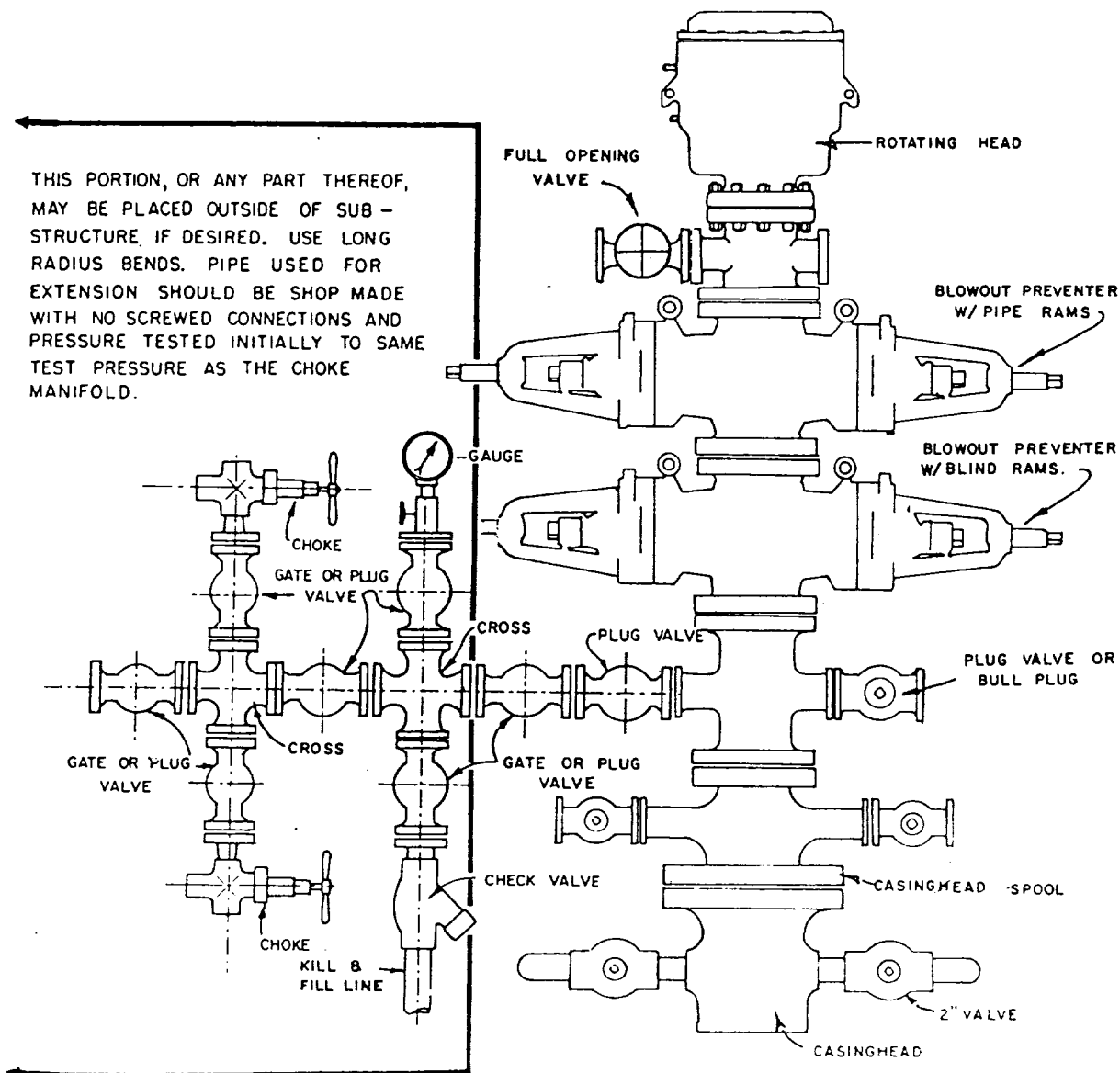
Operator AMOCO PRODUCTION COMPANY			Lease LEPPER GAS COM "D"		Well No. 1
Unit Letter L	Section 34	Township 32N	Range 10W	County San Juan	
Actual Footage Location of Well: 1480 feet from the South line and 800 feet from the West line					
Ground Level Elev. 5838	Producing Formation Fruitland		Pool Undesignated Fruitland		Dedicated Acreage: 160152.36 Acres
<p>1. Outline the acreage dedicated to the subject well by colored pencil or hatchure marks on the plat below.</p> <p>2. If more than one lease is dedicated to the well, outline each and identify the ownership thereof (both as to working interest and royalty).</p> <p>3. If more than one lease of different ownership is dedicated to the well, have the interests of all owners been consolidated by communitization, unitization, force-pooling, etc?</p> <p><input checked="" type="checkbox"/> Yes <input type="checkbox"/> No If answer is "yes," type of consolidation <u>communitization</u></p> <p>If answer is "no," list the owners and tract descriptions which have actually been consolidated (by communitization, unitization, forced-pooling, or otherwise) or until a non-standard unit, eliminating such interests, has been approved by the Commission.</p>					

RECEIVED
AUG 30 1983
OIL CON. DIV.
SANTA FE, N.M.

Scale: 1"=1000'

CERTIFICATION	
I hereby certify that the information contained herein is true and complete to the best of my knowledge and belief.	
Name	Dale H. Shoemaker
Position	District Engineer
Company	Amoco Production Company
Date	August 19, 1983
I hereby certify that the well location shown on this plat was plotted from field notes of actual surveys made by me or under my supervision, and that the same is true and correct to the best of my knowledge and belief.	
Date Surveyed	August 1, 1983
Registered Professional Engineer and Land Surveyor	Fred B. Kerr Jr.
Certificate No.	3950

1. Blowout Preventers and Master Valve to be fluid operated, and all fittings must be in good condition.
2. Equipment through which bit must pass shall be as large as the inside diameter of the casing that is being drilled through.
3. Nipple above Blowout Preventer shall be same size or larger than BOP being drilled through.
4. All fittings to be flanged.
5. Omsco or comparable safety valve must be available on rig floor at all times with proper connection or sub. The I.D. of safety valve should be as great as I.D. of tool joints of drill pipe, or at least as great as I.D. of drill collars.



BLOWOUT PREVENTER HOOKUP

API Series # 900

EXHIBIT D-4

OCTOBER 16, 1969

Operation of BOP by closing both pipe and blind rams will be tested each trip or, on long bit runs, pipe rams will be closed once each 24 hours.