

UNITED STATES
DEPARTMENT OF THE INTERIOR

GEOLOGICAL SURVEY

APPLICATION FOR PERMIT TO DRILL, DEEPEN, OR PLUG BACK

1a. TYPE OF WORK

DRILL ☒DEEPEN ☐PLUG BACK ☐

b. TYPE OF WELL

OIL
WELL ☐GAS
WELL ☒

OTHER

SINGLE
ZONE ☒MULTIPLE
ZONE ☐

2. NAME OF OPERATOR

BASIN MINERALS, INC.

3. ADDRESS OF OPERATOR c/o Walsh Engr. & Prod. Corp.

P. O. Drawer 419 Farmington, N.M. 87499

4. LOCATION OF WELL (Report location clearly and in accordance with any State requirements.)*

At surface

830' FNL, 1090' FWL

At proposed prod. zone

Same

14. DISTANCE IN MILES AND DIRECTION FROM NEAREST TOWN OR POST OFFICE*

3 miles NW of Aztec, New Mexico

15. DISTANCE FROM PROPOSED*

LOCATION TO NEAREST

PROPERTY OR LEASE LINE, FT.

(Also to nearest drlg. unit line, if any)

830'

18. DISTANCE FROM PROPOSED LOCATION*

TO NEAREST WELL, DRILLING, COMPLETED,
OR APPLIED FOR, ON THIS LEASE, FT.

2600'

16. NO. OF ACRES IN LEASE

2475.61

19. PROPOSED DEPTH

5200'

17. NO. OF ACRES ASSIGNED
TO THIS WELL

W/ 320

20. ROTARY OR CABLE TOOLS

Rotary

21. ELEVATIONS (Show whether DF, RT, GR, etc.)

5835' G.R.

22. APPROX. DATE WORK WILL START*

11/10/83

23.

PROPOSED CASING AND CEMENTING PROGRAM

SIZE OF HOLE	SIZE OF CASING	WEIGHT PER FOOT	SETTING DEPTH	QUANTITY OF CEMENT
12-1/4"	9-5/8"	36.0	250'	295 cu.ft.
8-3/4"	7"	20.0	2900'	770 cu.ft. (To surface)
6-1/4"	4-1/2"	10.50	2700'-5200'	350 cu.ft.

It is proposed to drill this well and complete in the Mesa Verde Formation.

EXHIBITS

"A" Location and elevation plat

"B" Ten Point Compliance Program

"C" Blowout Preventer Diagram

"D" Multi-Point Requirements for APD

"E" Access Road to location

"F" Radius Map of Field

"G" Drill Rig Layout

"H" Fracturing Program Layout

"I" Location Profile

The gas from this well is committed.

The W/2 of Section 27 is dedicated to this well.

IN ABOVE SPACE DESCRIBE PROPOSED PROGRAM: If proposal is to deepen or plug back, give data on present productive zone and proposed new productive zone. If proposal is to drill or deepen directionally, give pertinent data on subsurface locations and measured and true vertical depths. Give blowout preventer program, if any.

24. FOR: BASIN MINERALS, INC.

SIGNED

Ewell N. Walsh, P.E. President

Walsh Engr. & Prod.
Corporation

DATE 10/11/83

(This space for Federal or State office use)

PERMIT NO.

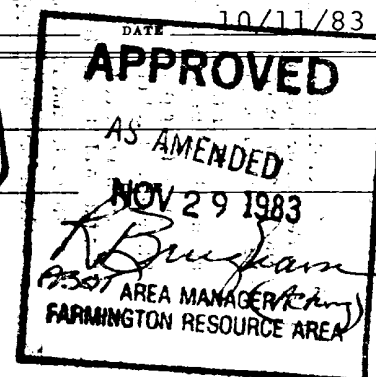
APPROVED BY

CONDITIONS OF APPROVAL, IF ANY:

TITLE

RECEIVED
DEC 1 - 1983
DIV.

*See Instructions On Reverse Side



OIL CONSERVATION DIVISION

STATE OF NEW MEXICO

P. O. BOX 2048

Form C-107
Revised 10-1-78

ENERGY AND MINERALS DEPARTMENT

SANTA FE, NEW MEXICO 87501

All distances must be from the outer boundaries of the Section.

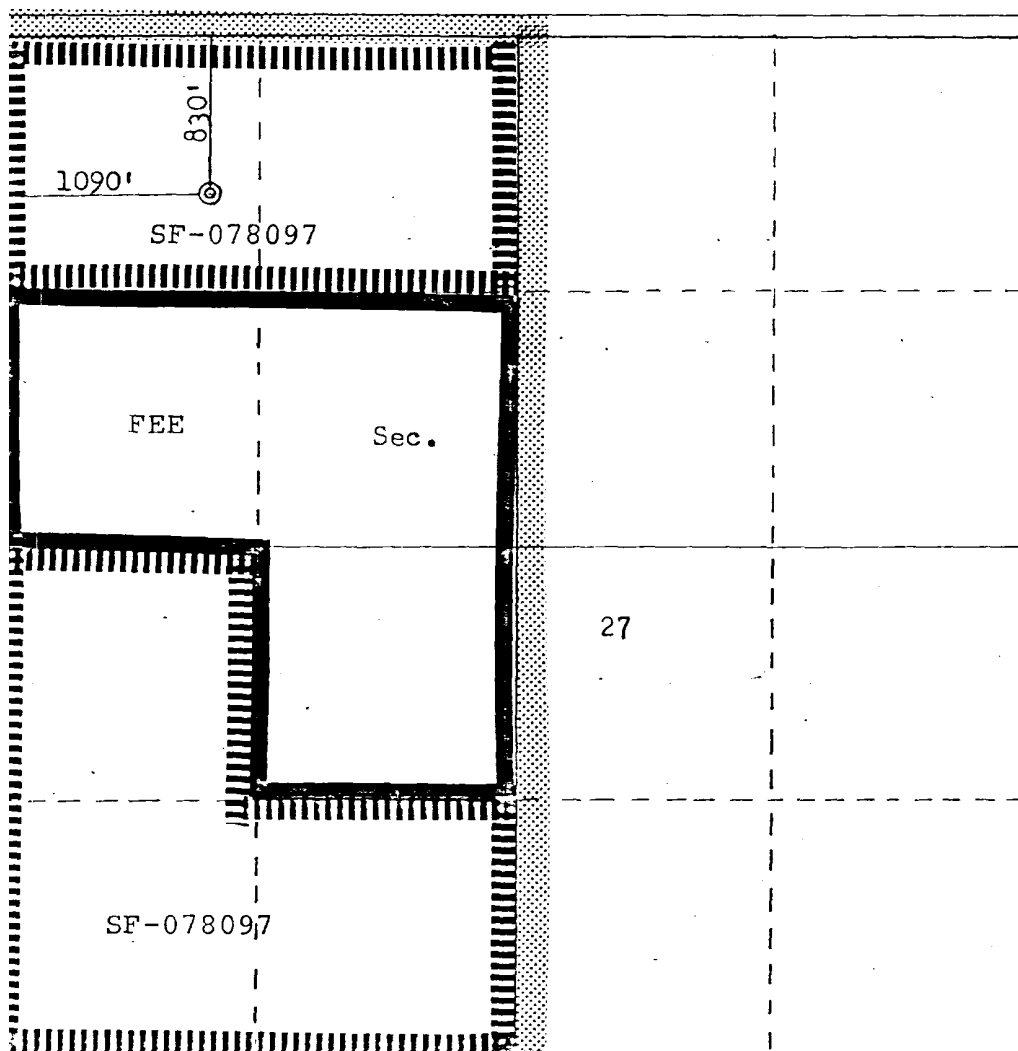
Operator BASIN MINERALS, INCORPORATED			Lease FEDERAL		Well No. 100
Unit Letter D	Section 27	Township 31N	Range 11W	County San Juan	
Actual Footage Location of Well: 830 feet from the North line and 1090 feet from the West line					
Ground Level Elev. 5835	Producing Formation Mesa Verde		Pool Blanco Mesa Verde		Dedicated Acreage: 320 Acres

1. Outline the acreage dedicated to the subject well by colored pencil or hatchure marks on the plat below.
2. If more than one lease is dedicated to the well, outline each and identify the ownership thereof (both as to working interest and royalty).
3. If more than one lease of different ownership is dedicated to the well, have the interests of all owners been consolidated by communitization, unitization, force-pooling, etc?

☒ Yes ☐ No If answer is "yes," type of consolidation Force Pooling Order No. R-7311

If answer is "no," list the owners and tract descriptions which have actually been consolidated. (Use reverse side of this form if necessary.)

No allowable will be assigned to the well until all interests have been consolidated (by communitization, unitization, forced-pooling, or otherwise) or until a non-standard unit, eliminating such interests, has been approved by the Commission.



Scale: 1"=1000'

CERTIFICATION EWELL N. WALSH	
I hereby certify that the information contained herein is true and complete to the best of my knowledge and belief.	
FOR: BASIN MINERALS, INC.	
ORIGINAL SIGNED BY	
Name	EWELL N. WALSH
Position	Ewell N. Walsh, P.E.
Company	Walsh Engr. & Prod. Corp.
Date	10/11/83
I hereby certify that the well location shown on this plat was plotted from field notes of actual surveys made by me or under my supervision, and that the same is true and correct to the best of my knowledge and belief.	
Date Surveyed	October 7, 1983
Registered Professional Engineer and Land Surveyor	Fred B. Kerr Jr.
Certificate No.	3950

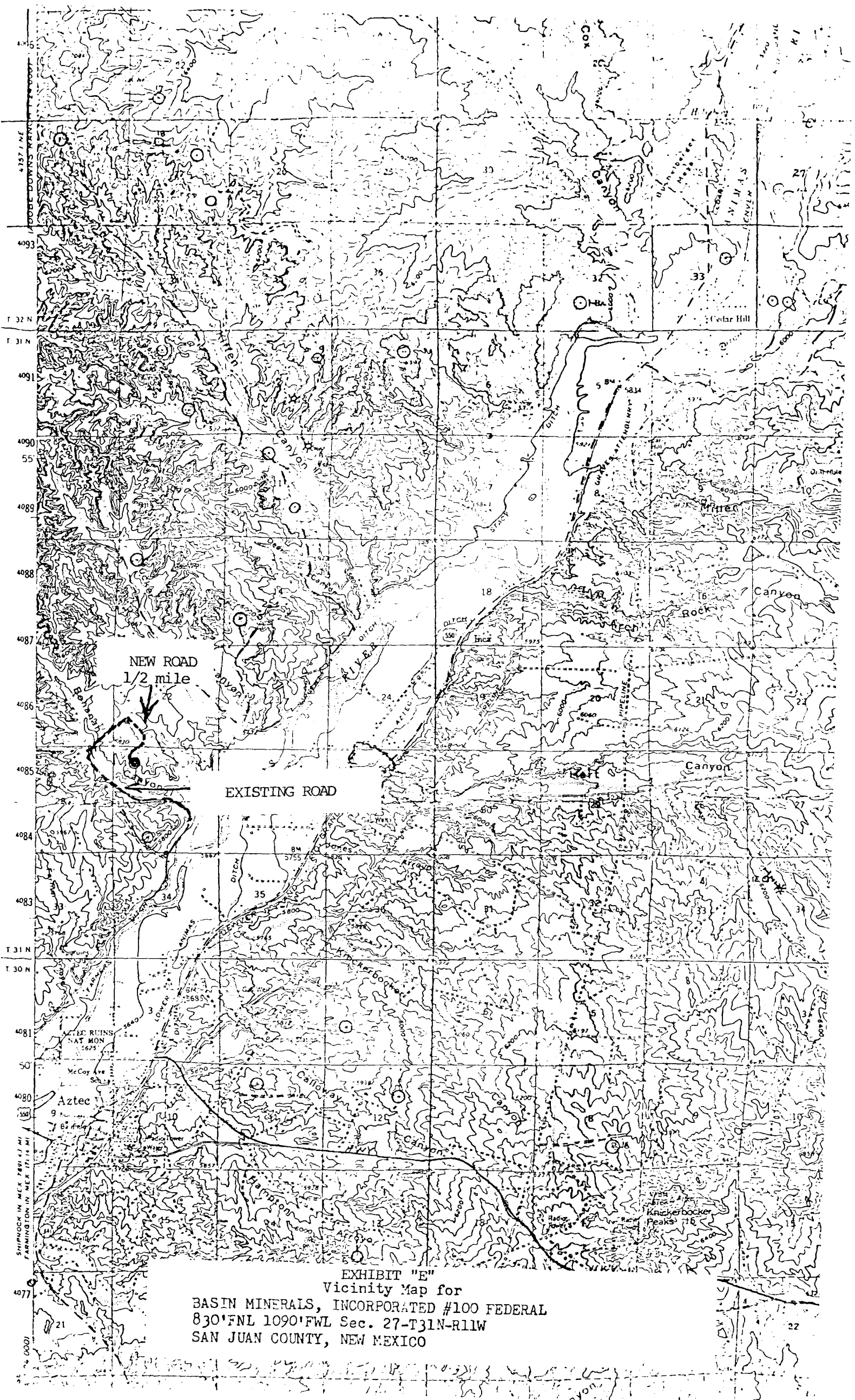


EXHIBIT "E"
Vicinity Map for
BASIN MINERALS, INCORPORATED #100 FEDERAL
830'FNL 1090'FWL Sec. 27-T31N-R11W
SAN JUAN COUNTY, NEW MEXICO