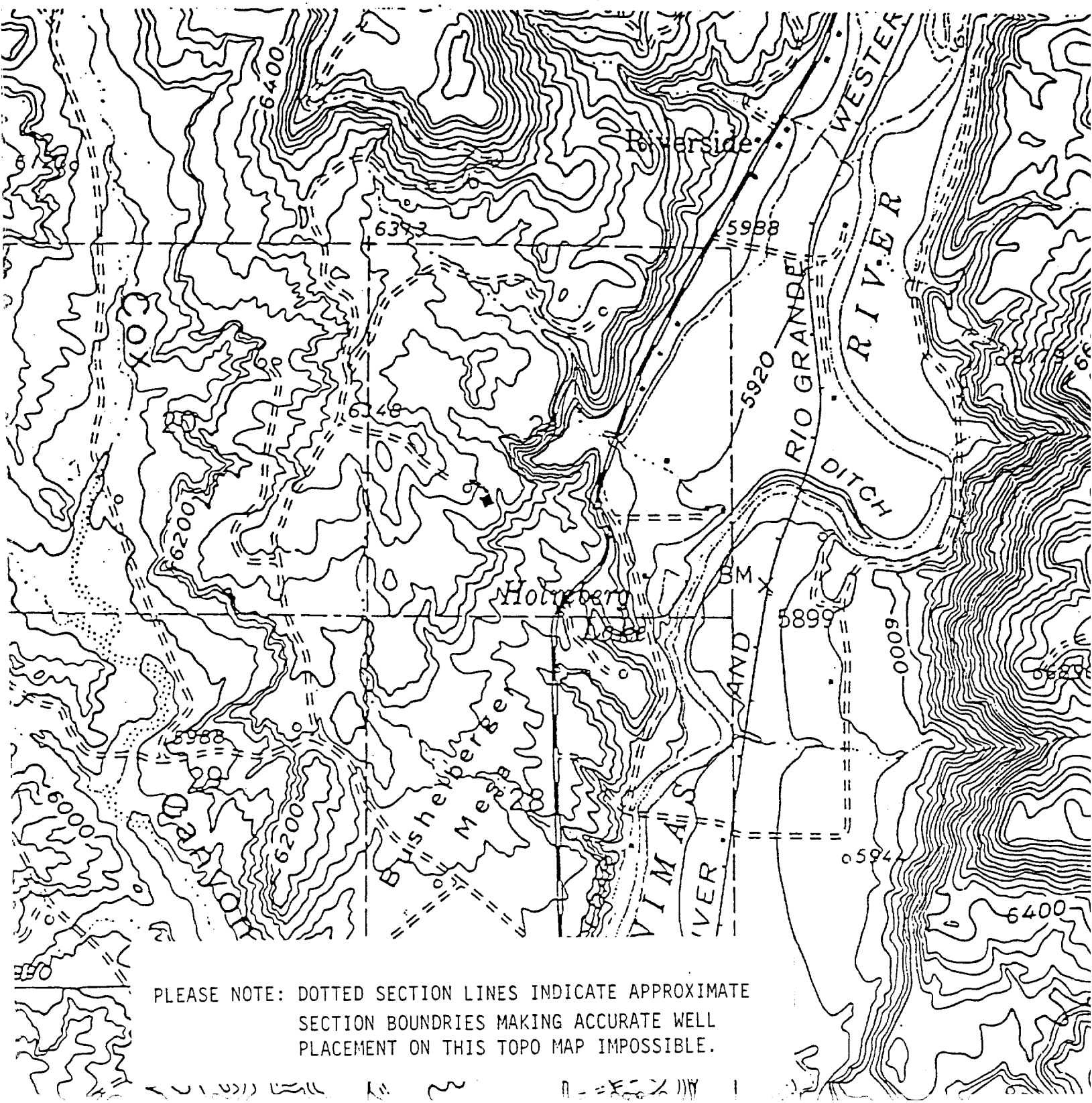


LEASE: SF 080517

PAYNE # 2-E

1663' FSL & 1850' FWL
SEC. 21, T32N, R10W
SAN JUAN COUNTY, N.M.

300' OF NEW ROAD NEEDED.



PLEASE NOTE: DOTTED SECTION LINES INDICATE APPROXIMATE
SECTION BOUNDRIES MAKING ACCURATE WELL
PLACEMENT ON THIS TOPO MAP IMPOSSIBLE.