

UNITED STATES
DEPARTMENT OF THE INTERIOR
BUREAU OF LAND MANAGEMENT

APPLICATION FOR PERMIT TO DRILL, DEEPEN, OR PLUG BACK

1a. TYPE OF WORK

DRILL ☒

DEEPEN ☐

PLUG BACK ☐

b. TYPE OF WELL

OIL
WELL ☐

GAS
WELL ☒

OTHER

SINGLE
ZONE ☒

MULTIPLE
ZONE ☐

2. NAME OF OPERATOR

Southland Royalty Company

3. ADDRESS OF OPERATOR

P. O. Drawer 570, Farmington, New Mexico 87499

4. LOCATION OF WELL (Report location clearly and in accordance with any State requirements.)

At surface

1800' FNL & 1740' FEL

At proposed prod. zone

14. DISTANCE IN MILES AND DIRECTION FROM NEAREST TOWN OR POST OFFICE*

6 Miles South of Ignacio, Colorado

15. DISTANCE FROM PROPOSED*

LOCATION TO NEAREST

PROPERTY OR LEASE LINE, FT.

(Also to nearest drig. unit line, if any)

1740'

18. DISTANCE FROM PROPOSED LOCATION*
TO NEAREST WELL, DRILLING, COMPLETED,
OR APPLIED FOR, ON THIS LEASE, FT.

700'

16. NO. OF ACRES IN LEASE

640.00

19. PROPOSED DEPTH

3610'

17. NO. OF ACRES ASSIGNED
TO THIS WELL

160

20. ROTARY OR CABLE TOOLS

Rotary

21. ELEVATIONS (Show whether DF, RT, GR, etc.)

6566' GL

DRILLING OPERATIONS AUTHORIZED ARE
SUBJECT TO COMPLIANCE WITH ATTACHED

22. APPROX. DATE WORK WILL START*

June 15, 1984

23. GENERAL REQUIREMENTS*

This action is subject to administrative
appeal pursuant to 30 CFR 290.

SIZE OF HOLE	SIZE OF CASING	WEIGHT PER FOOT	SETTING DEPTH	QUANTITY OF CEMENT
12-1/4"	New 8-5/8"	24#, K-55	200'	189 cu.ft. (Circulate to surface)
7-7/8"	*		3200'	
6-3/4"	New 2-7/8"	6.5#, J-55	3200'-3610'	653 cu.ft. (Cover Ojo Alamo)

Surface formation is San Jose.

Top of Ojo Alamo sand is at 2000'.

Top of Pictured Cliffs sand is at 3258'.

Fresh water mud will be used to drill from surface to total depth.

It is anticipated that an IES will be run from total depth to surface casing and a
GR-CDL will be run to total depth.

No abnormal pressures or poisonous gases are anticipated in this well.

It is expected that this well will be drilled before July 1, 1984.

This depends on time required for approvals, rig availability and the weather.
Gas is dedicated.

IN ABOVE SPACE DESCRIBE PROPOSED PROGRAM: If proposal is to deepen or plug back, give data on present productive zone and proposed new productive zone. If proposal is to drill or deepen directionally, give pertinent data on subsurface locations and measured and true vertical depths. Give blowout preventer program, if any.

24.

SIGNED

TITLE District Engineer

APPROVED

DATE May 22, 1984

(This space for Federal or State office use)

PERMIT NO.

APPROVAL DATE

AS AMENDED

MAY 31 1984

APPROVED BY

TITLE

CONDITIONS OF APPROVAL, IF ANY

AREA MANAGER
FARMINGTON RESOURCE AREA

OIL CON. DIV.
DIST. 3

NMOCC

*See Instructions On Reverse Side

NEW MEXICO OIL CONSERVATION COMMISSION
WELL LOCATION AND ACREAGE DEDICATION PLAT

Form C-102
Supersedes C-128
Effective 1-1-65

All distances must be from the outer boundaries of the Section.

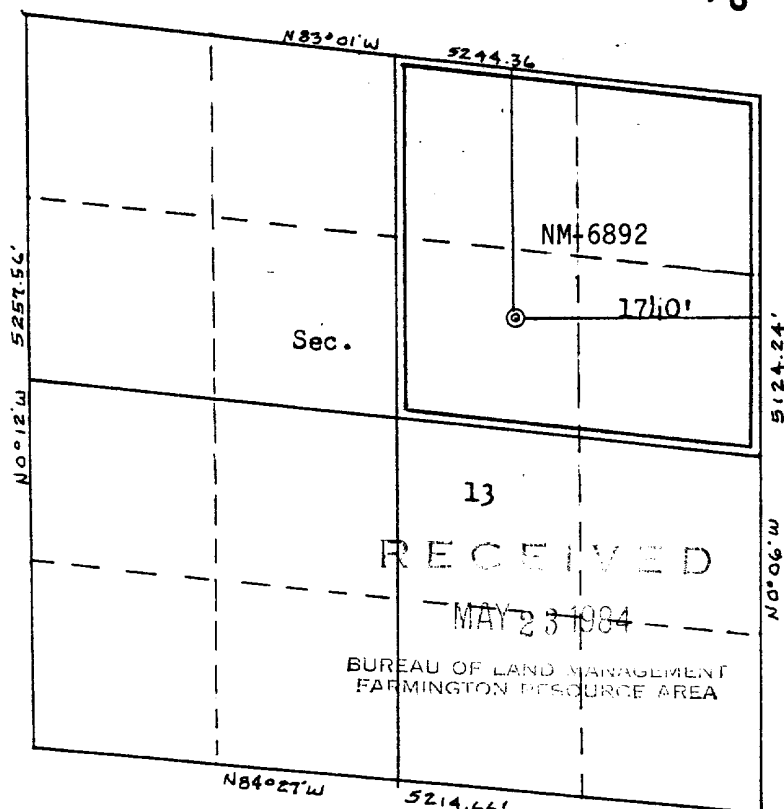
Operator SOUTHLAND ROYALTY COMPANY			Lease REESE MESA		Well No. 11
Unit Letter G	Section 13	Township 32N	Range 8W	County San Juan	
Actual Footage Location of Well:					
1800		feet from the North	line and 1740	feet from the East	line
Ground Level Elev: 6566' GL	Producing Formation Pictured Cliffs		Pool Albino	Dedicated Acreage: 160 Acres	

1. Outline the acreage dedicated to the subject well by colored pencil or hachure marks on the plat below.
2. If more than one lease is dedicated to the well, outline each and identify the ownership thereof (both as to working interest and royalty).
3. If more than one lease of different ownership is dedicated to the well, have the interests of all owners been consolidated by communitization, unitization, force-pooling, etc?

☐ Yes ☐ No If answer is "yes," type of consolidation _____

If answer is "no," list the owners and tract descriptions which have actually been consolidated. (Use reverse side of this form if necessary.) _____

No allowable will be assigned to the well until all interests have been consolidated (by communitization, unitization, forced-pooling, or otherwise) or until a non-standard unit, eliminating such interests, has been approved by the Commission.



Scale: 1"=1320'

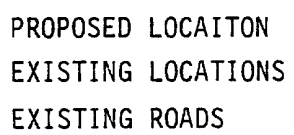
CERTIFICATION

I hereby certify that the information contained herein is true and complete to the best of my knowledge and belief.

Name
C. Terry Hobbs
Position
District Engineer
Company
Southland Royalty Company
Date
May 22, 1984

I hereby certify that the well location shown on this plat was plotted from field notes of actual surveys made by me or under my supervision, and that the same is true and correct to the best of my knowledge and belief.

Date Surveyed
December 28, 1983
Registered Professional Engineer and Land Surveyor
Fred B. Kerr Jr.
Certificate No.
3950



Vicinity Map for
SOUTHLAND ROYALTY COMPANY #11 REESE MESA
1800'FNL 1740'FEL Sec. 13-T32N-R8W
SAN JUAN COUNTY, NEW MEXICO