

UNITED STATES  
DEPARTMENT OF THE INTERIOR  
GEOLOGICAL SURVEY

APPLICATION FOR PERMIT TO DRILL, DEEPEN, OR PLUG BACK

1a. TYPE OF WORK DRILL ☒ DEEPEN ☐ PLUG BACK ☐

b. TYPE OF WELL  
OIL WELL ☐ GAS WELL ☒ OTHER ☐ SINGLE ZONE ☒ MULTIPLE ZONE ☐

2. NAME OF OPERATOR  
Tenneco Oil Company

3. ADDRESS OF OPERATOR  
P.O. Box 3249, Englewood, CO 80155

4. LOCATION OF WELL (Report location clearly and in accordance with any State requirements.)  
At surface  
560' FNL, 1720' FWL  
At proposed prod. zone

14. DISTANCE IN MILES AND DIRECTION FROM NEAREST TOWN OR POST OFFICE\*  
Approximately 6 mi NW of Aztec, NM

15. DISTANCE FROM PROPOSED\* LOCATION TO NEAREST PROPERTY OR LEASE LINE, FT. (Also to nearest drlg. unit line, if any) 560'  
16. NO. OF ACRES IN LEASE 2560  
17. NO. OF ACRES ASSIGNED TO THIS WELL 320  
18. DISTANCE FROM PROPOSED LOCATION\* TO NEAREST WELL, DRILLING, COMPLETED, OR APPLIED FOR, ON THIS LEASE, FT. + 7280'  
19. PROPOSED DEPTH + 7280'  
20. ROTARY OR CABLE TOOLS Rotary

21. ELEVATIONS (Show whether DF, RT, GR, etc.) 6140' GR  
22. APPROX. DATE WORK WILL START\* ASAP

23. PROPOSED CASING AND CEMENTING PROGRAM

SIZE OF HOLE	SIZE OF CASING	WEIGHT PER FOOT	SETTING DEPTH
12-1/4"	9-5/8"	36#	+ 325'
8-3/4"	7"	23#	+ 4830'
6-1/4"	4-1/2"	10.5#	+ 7000'
6-1/4"	4-1/2"	11.6#	+ 7280'

This action is subject to administrative appeal pursuant to 30 CFR 290.  
Circulate to surface  
Circulate of surface - 2 stages  
Circulate to liner top  
Circulate to liner top

See Attached.

RECEIVED

JUL 16 1984

OIL CON  
DIST.

IN ABOVE SPACE DESCRIBE PROPOSED PROGRAM: If proposal is to deepen or plug back, give data on present productive zone and proposed new productive zone. If proposal is to drill or deepen directionally, give pertinent data on subsurface locations and measured and true vertical depths. Give blowout preventer program, if any.

24. SIGNED [Signature] TITLE Regulatory Analyst II DATE 5/22/84

(This space for Federal or State office use)

PERMIT NO. \_\_\_\_\_ APPROVAL DATE \_\_\_\_\_

APPROVED BY \_\_\_\_\_ TITLE \_\_\_\_\_

CONDITIONS OF APPROVAL, IF ANY:

APPROVED

DATE AS AMENDED  
JUL 12 1984

/s/ J. Stan McKee

AREA MANAGER  
FARMINGTON RESOURCE AREA

NMOCC

## OIL CONSERVATION DIVISION

P. O. BOX 2088

SANTA FE, NEW MEXICO 87501

Form C-107  
Revised 10-1-78

STATE OF NEW MEXICO

OIL AND MINERALS DEPARTMENT

All distances must be from the outer boundaries of the Section.

Operator <b>Tenneco Oil Company</b>		Lease <b>Newberry A</b>		Well No. <b>2E</b>
Unit Letter <b>C</b>	Section <b>9</b>	Township <b>31N</b>	Range <b>12W</b>	County <b>San Juan</b>
Actual Footage Location of Well: <b>560</b> feet from the <b>North</b> line and <b>1720</b> feet from the <b>West</b> line				
Ground Level Elev. <b>6140</b>	Producing Formation <b>Dakota</b>	Pool <b>Basin Dakota</b>	Dedicated Acreage: <b>320</b> Acres	

1. Outline the acreage dedicated to the subject well by colored pencil or hatchure marks on the plat below.

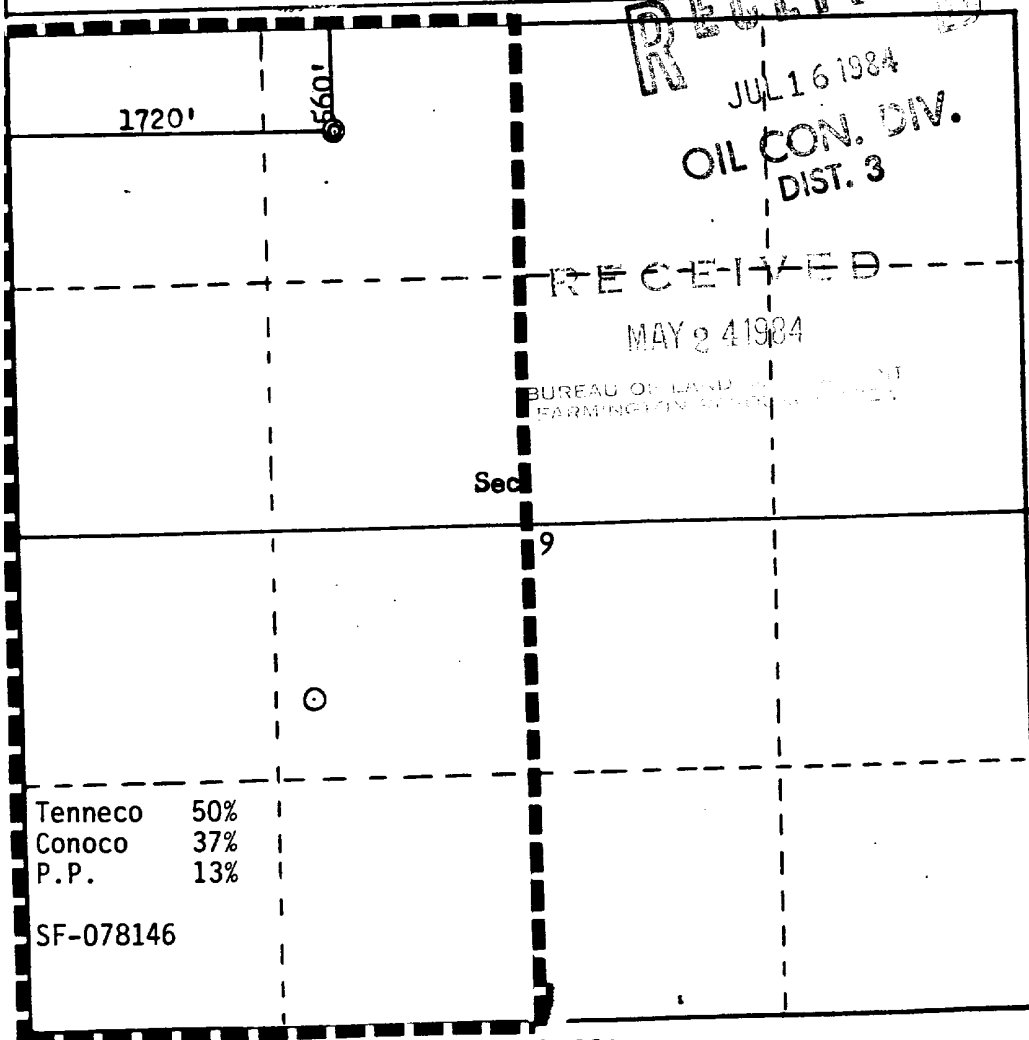
2. If more than one lease is dedicated to the well, outline each and identify the ownership thereof (both as to working interest and royalty).

3. If more than one lease of different ownership is dedicated to the well, have the interests of all owners been consolidated by communitization, unitization, force-pooling, etc?

☐ Yes ☐ No If answer is "yes," type of consolidation \_\_\_\_\_

If answer is "no," list the owners and tract descriptions which have actually been consolidated. (Use reverse side of this form if necessary.) \_\_\_\_\_

No allowable will be assigned to the well until all interests have been consolidated (by communitization, unitization, forced-pooling, or otherwise) or until a non-standard unit, eliminating such interests, has been approved by the Commission.



## CERTIFICATION

I hereby certify that the information contained herein is true and complete to the best of my knowledge and belief.

Name

John Orr

Position

Regulatory Analyst II

Company

Tenneco Oil Company

Date

May 21, 1984

I hereby certify that the well location shown on this plat was plotted from field notes of actual surveys made by me or under my supervision, and that the same is true and correct to the best of my knowledge and belief.

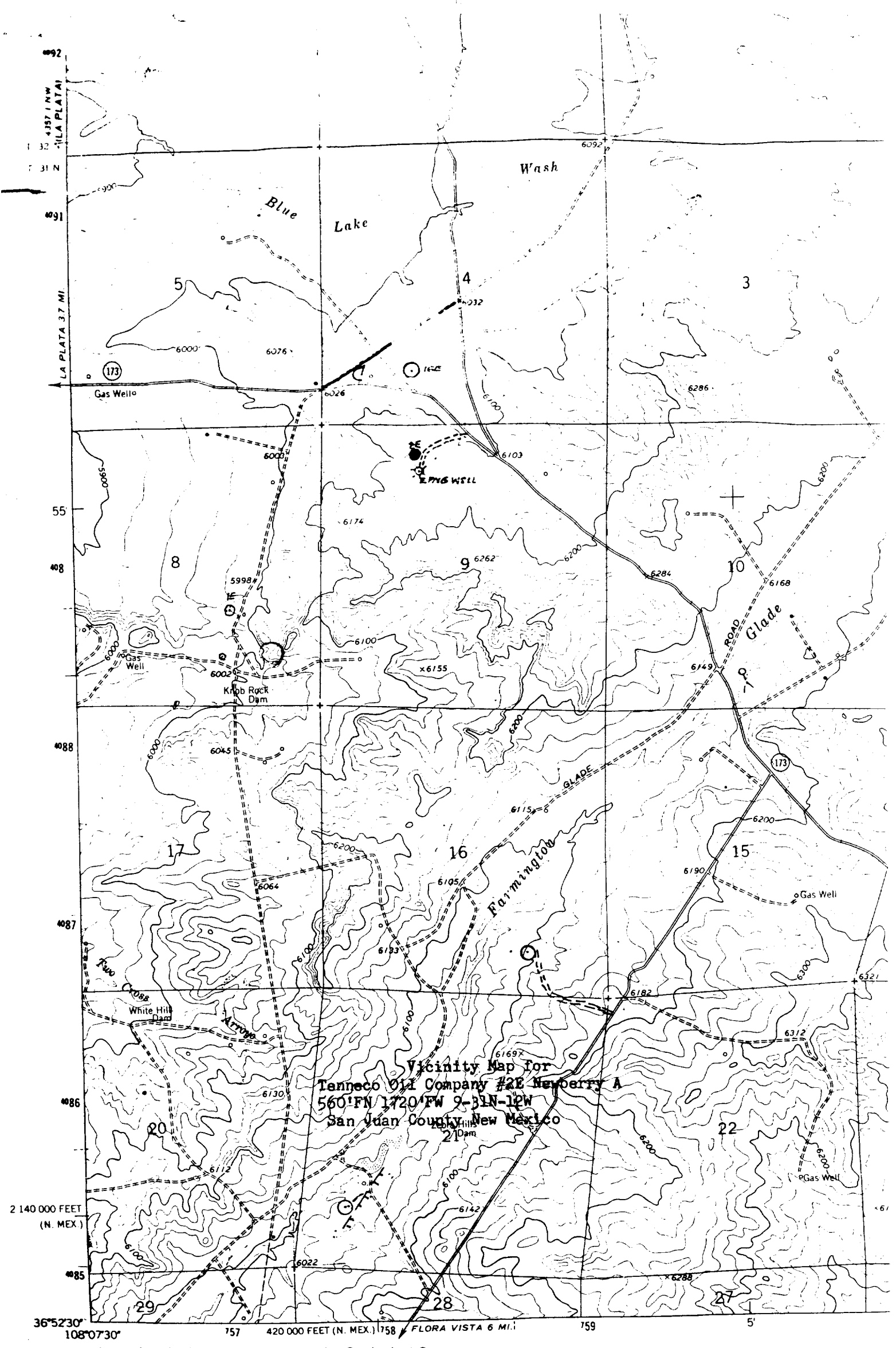
Date Surveyed  
March 7, 1984Registered Professional Engineer  
and Land Surveyor

Fred B. Kerr Jr.

Certificate No.

3950

Scale: 1"=1000'

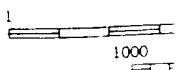
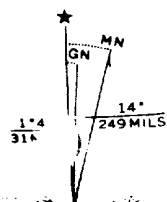


Mapped, edited, and published by the Geological Survey

Control by USGS, USC&GS, and Bureau of Reclamation

Topography by photogrammetric methods from aerial photographs taken 1958 and 1962. Field checked 1963

Polyconic projection. 1927 North American datum.  
10 000 foot grid based on New Mexico coordinate system, west zone  
on Colorado coordinate system, south zone.  
meter Universal Transverse Mercator grid ticks.



43°37'N  
108°07'30\"/>