

(May 1983)

UNITED STATES
DEPARTMENT OF THE INTERIOR
GEOLOGICAL SURVEY

(OUT) NORTHWEST PIPELINE CORPORATION Form No. 42-R1425. 70

FEB 08 1985

APPLICATION FOR PERMIT TO DRILL, DEEPEN, OR PLUG BACK

1a. TYPE OF WORK

DRILL ☒DEEPEN ☐PLUG BACK ☐

PRODUCTION AND DRILLING

b. TYPE OF WELL

OIL WELL ☐GAS WELL ☒OTHER ☐SINGLE ZONE ☒MULTIPLE ZONE ☐

2. NAME OF OPERATOR

Northwest Pipeline Corporation

3. ADDRESS OF OPERATOR

P.O. Box 90, Farmington, New Mexico 87499

4. LOCATION OF WELL (Report location clearly and in accordance with any State requirements.)

At surface

980 FNL & 790 FWL NW/NW

FEB 01 1985

At proposed prod. zone

980 FNL & 790 FWL

BUREAU OF LAND MANAGEMENT

14. DISTANCE IN MILES AND DIRECTION FROM NEAREST TOWN OR POST OFFICE*

15 miles South of Ignacio, Colorado

15. DISTANCE FROM PROPOSED*

LOCATION TO NEAREST
PROPERTY OR LEASE LINE, FT.
(Also to nearest drlg. unit line, if any)

790'

16. NO. OF ACRES IN LEASE

N/A 956.34

18. DISTANCE FROM PROPOSED LOCATION*
TO NEAREST WELL, DRILLING, COMPLETED,
OR APPLIED FOR, ON THIS LEASE, FT.

2000' ±

19. PROPOSED DEPTH

6140'

17. NO. OF ACRES ASSIGNED
TO THIS WELL

W 320

20. ROTARY OR CABLE TOOLS

Rotary

21. ELEVATIONS (Show whether DF, RT, GP, etc.)

6660' GR

DRILLING OPERATIONS AUTHORIZED ARE
SUBJECT TO COMPLIANCE WITH ATTACHED
"GENERAL REQUIREMENTS" AND CEMENTING PROGRAM

22. APPROX. DATE WORK WILL START*

April 1985

23.

This action is subject to administrative
appeal pursuant to 33 CFR 290.
QUANTITY OF CEMENT

SIZE OF HOLE	SIZE OF CASING	WEIGHT PER FOOT	SETTING DEPTH	QUANTITY OF CEMENT
12-1/4"	9-5/8"	36#	200'	185 cu.ft.
8-3/4"	7"	20#	3900'	355 cu.ft.
6-1/4"	4-1/2"	10.5#	6140'	375 cu.ft.

Selectively perforate and stimulate the Mesa Verde formations.
Completion plans will be determined at Total Depth.

A BOP will be installed after the surface casing is set and cemented. All
subsequent work will be conducted through the BOP's.

The West half of Section 25 is dedicated to this well.

Gas is dedicated.

RECEIVED
FEB 12 1985

OIL CON. DIV.
DIST. 3

IN ABOVE SPACE DESCRIBE PROPOSED PROGRAM: If proposal is to deepen or plug back, give data on present productive zone and proposed new productive zone. If proposal is to drill or deepen directionally, give pertinent data on subsurface locations and measured and true vertical depths. Give blowout preventer program, if any.

24.

SIGNED

Mike Turnbaugh

TITLE Sr. Engineer

DATE 1-30-85

(This space for Federal or State office use)

PERMIT NO.

APPROVAL DATE

APPROVED BY

TITLE

CONDITIONS OF APPROVAL, IF ANY:

MJT/lsm

*See Instructions On Reverse Side

APPROVED
AS AMENDED

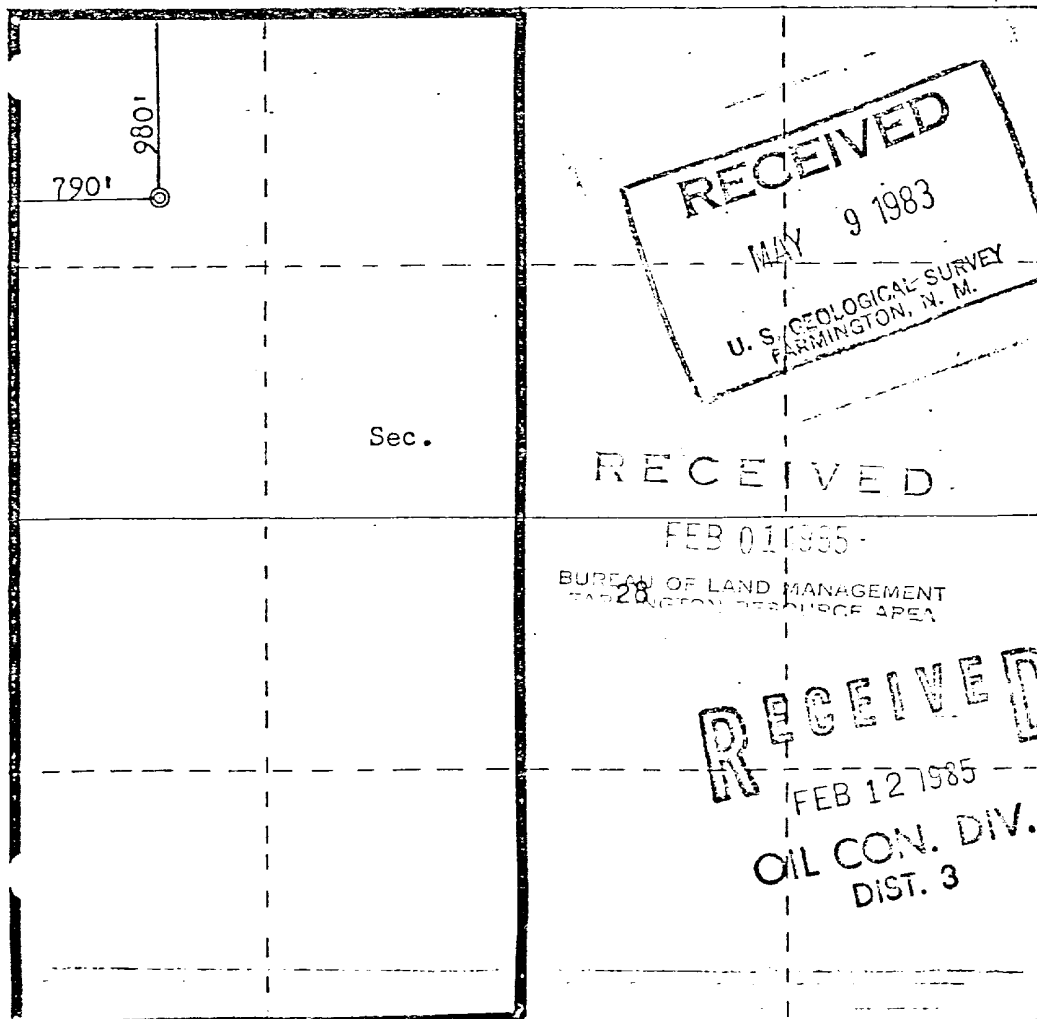
DATE

FEB 07 1985

Jack Spear
AREA MANAGER
FARMINGTON RESOURCE AREA

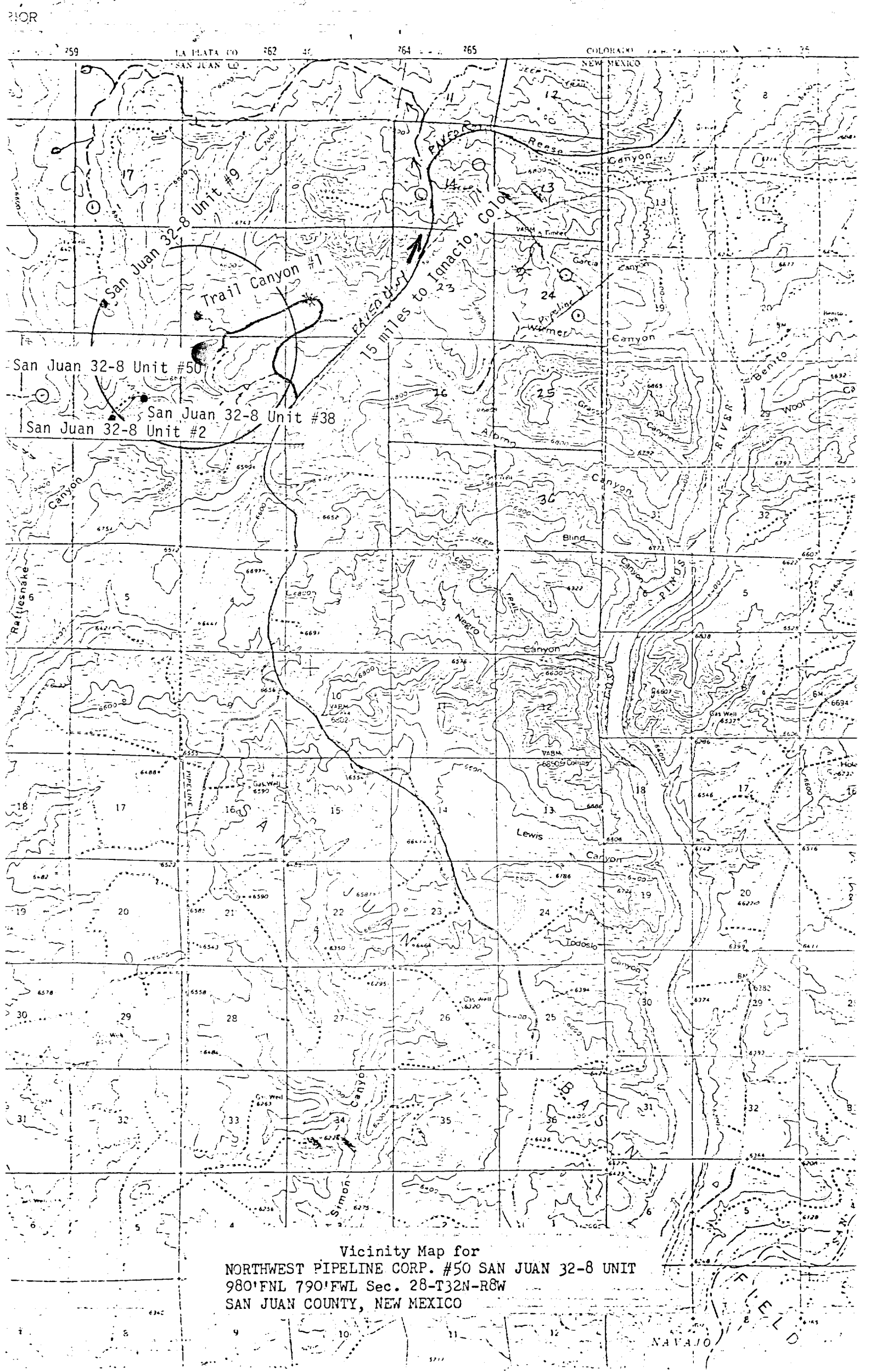
All distances must be from the outer boundaries of the Section.

Operator NORTHWEST PIPELINE CORPORATION			Lease SAN JUAN 32-8 UNIT		Well No. 50
Unit Letter D	Section 28	Township 32N	Range 8W	County San Juan	
Actual Footage Location of Well:					
980 feet from the North line and		790 feet from the West line			
Ground Level Elev: 6660	Producing Formation Mesa Verde	Pool Blanco Mesa Verde	Dedicated Acreage: 320 Acres		
<p>1. Outline the acreage dedicated to the subject well by colored pencil or hatchure marks on the plat below.</p> <p>2. If more than one lease is dedicated to the well, outline each and identify the ownership thereof (both as to working interest and royalty).</p> <p>3. If more than one lease of different ownership is dedicated to the well, have the interests of all owners been consolidated by communitization, unitization, force-pooling, etc?</p> <p><input checked="" type="checkbox"/> Yes <input type="checkbox"/> No If answer is "yes," type of consolidation <u>Unitization</u></p> <p>If answer is "no," list the owners and tract descriptions which have actually been consolidated. (Use reverse side of this form if necessary.) _____</p> <p>No allowable will be assigned to the well until all interests have been consolidated (by communitization, unitization, forced-pooling, or otherwise) or until a non-standard unit, eliminating such interests, has been approved by the Commission.</p>					



Scale: 1"=1000'

CERTIFICATION	
I hereby certify that the information contained herein is true and complete to the best of my knowledge and belief.	
<i>Paul C. Thompson</i>	
Name	Paul C. Thompson
Position	Sr. Drilling Engineer
Company	Northwest Pipeline Corp
Date	April 22, 1983
I hereby certify that the well location shown on this plat was plotted from field notes of actual surveys made by me or under my supervision, and that the same is true and correct to the best of my knowledge and belief.	
Date Surveyed	April 21, 1983
Registered Professional Engineer and Land Surveyor	<i>Fred B. Kerr Jr.</i>
Certificate No.	3950



Vicinity Map for
NORTHWEST PIPELINE CORP. #50 SAN JUAN 32-8 UNIT
980'FNL 790'FWL Sec. 28-T32N-R8W
SAN JUAN COUNTY, NEW MEXICO