

UNITED STATES
DEPARTMENT OF THE INTERIOR
BUREAU OF LAND MANAGEMENT

APPLICATION FOR PERMIT TO DRILL, DEEPEN, OR PLUG BACK

1a. TYPE OF WORK

DRILL ☒

DEEPEN ☐

PLUG BACK ☐

b. TYPE OF WELL

OIL
WELL ☐

GAS
WELL ☒

OTHER

SINGLE
ZONE ☒

MULTIPLE
ZONE ☐

2. NAME OF OPERATOR

El Paso Exploration Company

3. ADDRESS OF OPERATOR

PO Box 4289, Farmington, NM 87499

4. LOCATION OF WELL (Report location clearly and in accordance with any State requirements.)*

At surface
1840'N, 1830'E

RECEIVED

DEC 6 1984

At proposed prod. zone

14. DISTANCE IN MILES AND DIRECTION FROM NEAREST TOWN OR POST OFFICE*

6 miles South of Arboles, Colo

15. DISTANCE FROM PROPOSED*

LOCATION TO NEAREST
PROPERTY OR LEASE LINE, FT. 1830'
(Also to nearest drlg. unit line, if any)

16. NO. OF ACRES IN LEASE

320.

17. NO. OF ACRES ASSIGNED
TO THIS WELL

E 320.00

18. DISTANCE FROM PROPOSED LOCATION*
TO NEAREST WELL, DRILLING, ~~2840'~~
OR APPLIED FOR, ON THIS LEASE, FT.

19. PROPOSED DEPTH
6025'

20. ROTARY OR CABLE TOOLS

Rotary

21. ELEVATIONS (Show whether DF, RT, GR, etc.)

6398' GL

DRILLING OPERATIONS AUTHORIZED ARE

SUBJECT TO COMPLIANCE WITH ATTACHED

"GENERAL REQUIREMENTS" AND CEMENTING PROGRAM

22. APPROX. DATE WORK WILL START*

This action is subject to administrative
appeal pursuant to 30 CFR 2901

| SIZE OF HOLE | SIZE OF CASING | WEIGHT PER FOOT | SETTING DEPTH | QUANTITY OF CEMENT |
|--------------|----------------|-----------------|---------------|---------------------------|
| 13 3/4" | 9 5/8" | 32.3# | 200' | 224 cu.ft.circulated |
| 8 3/4" | 7" | 20.0# | 3485' | 371 cu.ft.cover Ojo Alamo |
| 6 1/4" | 4 1/2" | 10.5# | 3335-6025' | 469 cu.ft.circ. liner |

Selectively perforate and sand water fracture the Mesa Verde formation.

A 3000 psi WP and 6000 psi test double gate preventer equipped with blind and pipe rams will be used for blow out prevention on this well.

This gas is dedicated.

The E/2 of Section 21 is dedicated to this well.

RECEIVED

FEB 19 1985

OIL CON. DIV.
DIST. 3

IN ABOVE SPACE DESCRIBE PROPOSED PROGRAM: If proposal is to deepen or plug back, give data on present productive zone and proposed new productive zone. If proposal is to drill or deepen directionally, give pertinent data on subsurface locations and measured and true vertical depths. Give blowout preventer program, if any.

24.

SIGNED

TITLE Drilling Clerk

APPROVED

(This space for Federal or State office use)

PERMIT NO.

APPROVAL DATE

APPROVED BY

TITLE

CONDITIONS OF APPROVAL, IF ANY:

NMOCC

AS AMENDED

FEB 13 1985

/s/ J. Stan McKee

AREA MANAGER
FARMINGTON RESOURCE AREA

*See Instructions On Reverse Side

All distances must be from the outer boundaries of the Section.

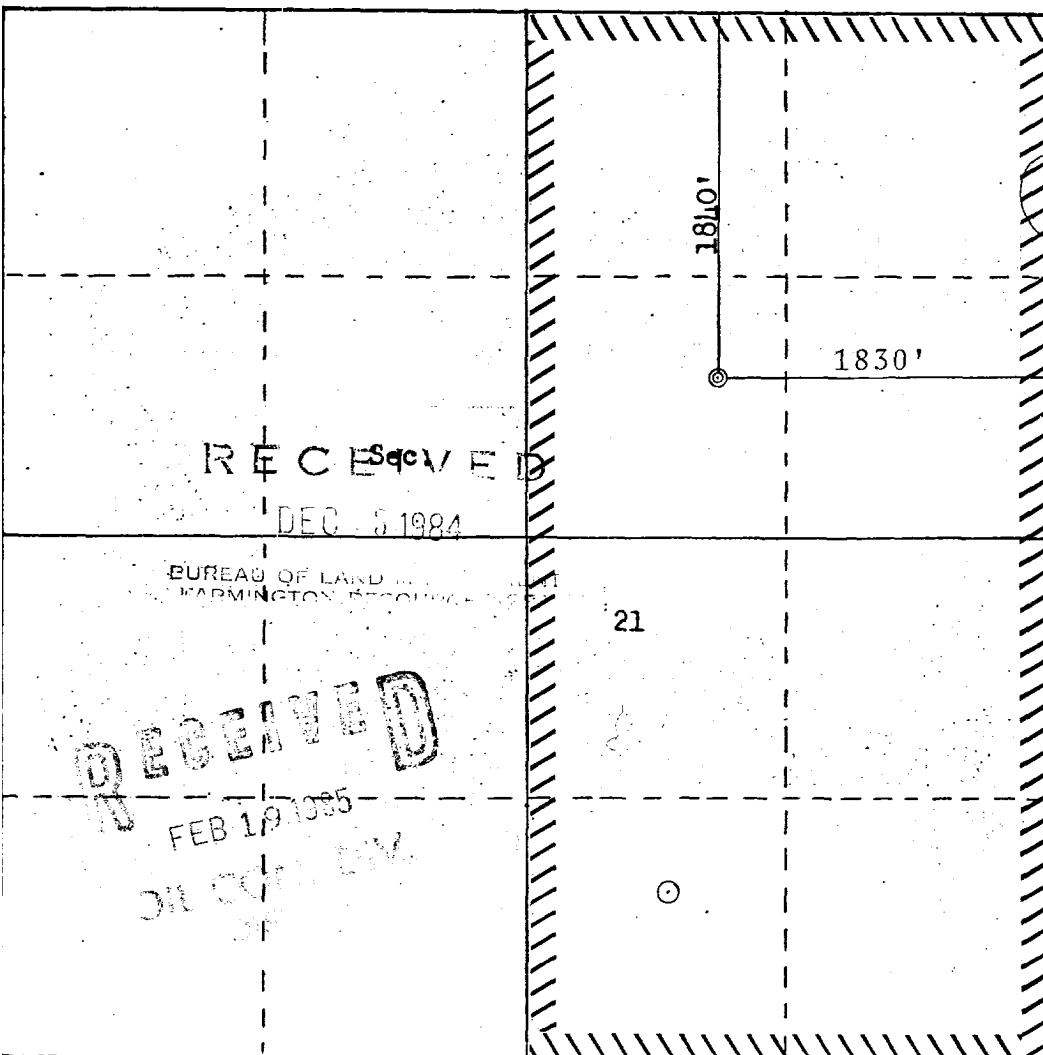
| | | | | | |
|--|--|------------------------|-------------------------------------|-------------------------------------|-----------------------|
| Operator EL PASO EXPLORATION COMPANY | | | Lease EPNG "A" (NM 12013) | | Well No. 1A |
| Unit Letter G | Section 21 | Township 32N | Range 6W | County San Juan | |
| Actual Footage Location of Well: 1840 feet from the North line and 1830 feet from the East line | | | | | |
| Ground Level Elev: 6398' | Producing Formation Mesa Verde | | Pool Blanco | Dedicated Acreage: 320 Acres | |

1. Outline the acreage dedicated to the subject well by colored pencil or hachure marks on the plat below.
2. If more than one lease is dedicated to the well, outline each and identify the ownership thereof (both as to working interest and royalty).
3. If more than one lease of different ownership is dedicated to the well, have the interests of all owners been consolidated by communitization, unitization, force-pooling, etc?

☐ Yes ☐ No If answer is "yes," type of consolidation _____

If answer is "no," list the owners and tract descriptions which have actually been consolidated. (Use reverse side of this form if necessary.) _____

No allowable will be assigned to the well until all interests have been consolidated (by communitization, unitization, forced-pooling, or otherwise) or until a non-standard unit, eliminating such interests, has been approved by the Commission.



CERTIFICATION

I hereby certify that the information contained herein is true and complete to the best of my knowledge and belief.

Shadfield
Name

Drilling Clerk

Position

El Paso Exploration Co.

Company

November 29, 1984

Date

I hereby certify that the well location shown on this plat was plotted from field notes of actual surveys made by me or under my supervision, and that the same is true and correct to the best of my knowledge and belief.

Date Surveyed

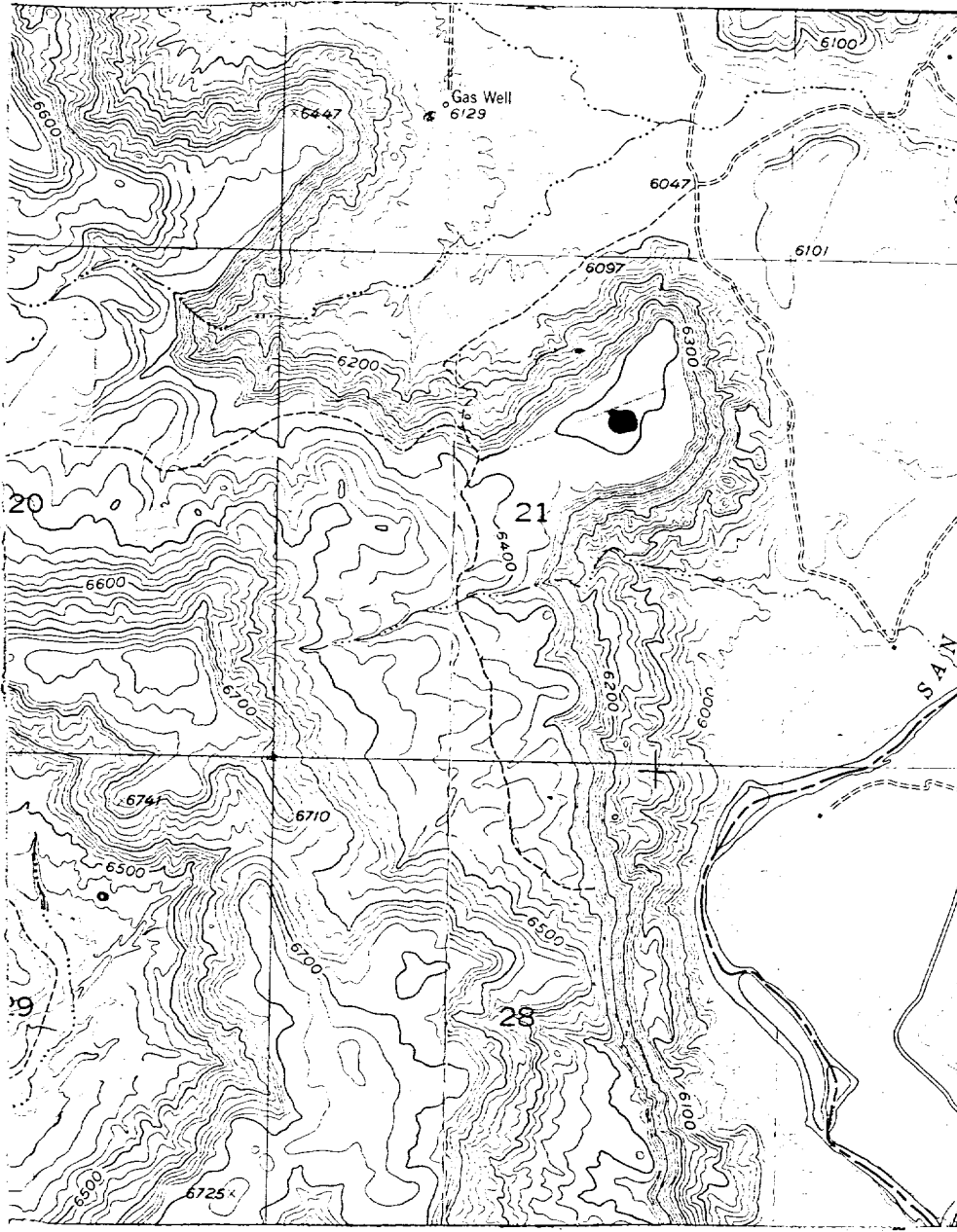
October 30, 1984

Registered Professional Engineer and Land Surveyor

Fred B. Kerr Jr.
Fred B. Kerr Jr.

Certificate No. 2, 855

El Paso Natural Gas Company
 EPNG A #1A (MV)
 NE 21-32-6



LEGEND OF RIGHT-OF-WAYS

EXISTING ROADS

EXISTING PIPELINES

EXISTING ROAD & PIPELINE

PROPOSED ROADS

PROPOSED PIPELINES

PROPOSED ROAD & PIPELINE

