

UNITED STATES
DEPARTMENT OF THE INTERIOR
BUREAU OF LAND MANAGEMENT

APPLICATION FOR PERMIT TO DRILL, DEEPEN, OR PLUG BACK

1a. TYPE OF WORK

DRILL ☒

DEEPEN ☐

PLUG BACK ☐

b. TYPE OF WELL

OIL
WELL ☐

GAS
WELL ☒

OTHER

SINGLE
ZONE ☒

MULTIPLE
ZONE ☐

2. NAME OF OPERATOR

El Paso Exploration Company

3. ADDRESS OF OPERATOR

P.O. Box 4289, Farmington, NM 87499

4. LOCATION OF WELL (Report location clearly and in accordance with any State requirements.)

At surface

1840'S, 900'E

At proposed prod. zone

BUREAU OF LAND MANAGEMENT
FARMINGTON OFFICE

14. DISTANCE IN MILES AND DIRECTION FROM NEAREST TOWN OR POST OFFICE

5 miles Northeast of Cedar Hill, NM

15. DISTANCE FROM PROPOSED*

LOCATION TO NEAREST
PROPERTY OR LEASE LINE, FT.
(Also to nearest drlg. unit line, if any) 900'

16. NO. OF ACRES IN LEASE

634.49

17. NO. OF ACRES ASSIGNED
TO THIS WELL

E 316.60

18. DISTANCE FROM PROPOSED LOCATION*
TO NEAREST WELL, DRILLING, COMPLETED,
OR APPLIED FOR, ON THIS LEASE, FT. 2500'

19. PROPOSED DEPTH

6360'

20. ROTARY OR CABLE TOOLS

Rotary

21. ELEVATIONS (Show whether DF, RT, GR, etc.)

6777'GL

DRILLING OPERATIONS AUTHORIZED ARE
SUBJECT TO COMPLIANCE WITH ATTACHED

22. APPROX. DATE WORK WILL START*

23. PROPOSED CASING AND CEMENTING PROGRAM

SIZE OF HOLE	SIZE OF CASING	WEIGHT PER FOOT	SETTING DEPTH	QUANTITY OF CEMENT
12 1/4"	9 5/8"	36.0#	200'	130 cu.ft.circulated
8 3/4"	7"	20.0#	3855'	337 cu.ft.cover Ojo Alamo
6 1/4"	4 1/2"	10.5#	3705-6360'	466 cu.ft.circ. liner

Selectively perforate and sand water fracture the Mesa Verde formation.

A 3000 psi WP and 6000 psi test double gate preventer equipped with blind and pipe rams will be used for blow out prevention on this well.

This gas is dedicated.

The E/2 of Section 19 is dedicated to this well.

This action is subject to technical and
procedural review pursuant to 43 CFR 3165.3
and appeal pursuant to 43 CFR 3165.4.

RECEIVED

JUN 19 1985

OIL CO.

IN ABOVE SPACE DESCRIBE PROPOSED PROGRAM: If proposal is to deepen or plug back, give data on present productive zone and proposed new productive zone. If proposal is to drill or deepen directionally, give pertinent data on subsurface locations and measured and true vertical depths. Give blowout preventer program, if any.

24.

SIGNED

Deanna L. Dack

TITLE

Drilling Clerk

(This space for Federal or State office use)

PERMIT NO.

APPROVAL DATE

APPROVED BY

CONDITIONS OF APPROVAL, IF ANY:

TITLE

APPROVED
AS AMENDED

JUN 14 1985

J. Stan McKee

M. MILLENBACH
AREA MANAGER

NMOCC

*See Instructions On Reverse Side

NEW MEXICO OIL CONSERVATION COMMISSION
WELL LOCATION AND ACREAGE DEDICATION PLAT

Form C-102
Supersedes C-128
Effective 1-1-55

All distances must be from the outer boundaries of the Section.

Operator El Paso Exploration Company			Lease NEWCO (NM 58887)		Well No. 2
Unit Letter I	Section 19	Township 32N	Range 9W	County San Juan	
Actual Footage Location of Well: 1840 feet from the South line and 900 feet from the East line					
Ground Level Elev: 6777	Producing Formation Mesa Verde	Pool Blanco	Dedicated Acreage: 316.60 Acres		

1. Outline the acreage dedicated to the subject well by colored pencil or hachure marks on the plat below.
2. If more than one lease is dedicated to the well, outline each and identify the ownership thereof (both as to working interest and royalty).
3. If more than one lease of different ownership is dedicated to the well, have the interests of all owners been consolidated by communitization, unitization, force-pooling, etc?

☐ Yes ☐ No If answer is "yes," type of consolidation _____

If answer is "no," list the owners and tract descriptions which have actually been consolidated. (Use reverse side of this form if necessary.) _____

No allowable will be assigned to the well until all interests have been consolidated (by communitization, unitization, forced-pooling, or otherwise) or until a non-standard unit, eliminating such interests, has been approved by the Commission.

RECEIVED
JUN 04 1985
BUREAU OF LAND MANAGEMENT
FARMINGTON RESOURCE AREA

Sec. 19

900'

1840'

1985

Oil Cons. Div.
Dist. 3

CERTIFICATION

I hereby certify that the information contained herein is true and complete to the best of my knowledge and belief.

Name

Drilling Clerk

Position

El Paso Exploration Co

Company

Date

I hereby certify that the well location shown on this plat was plotted from field notes of actual surveys made by me or under my supervision, and that the same is true and correct to the best of my knowledge and belief.

Date Surveyed

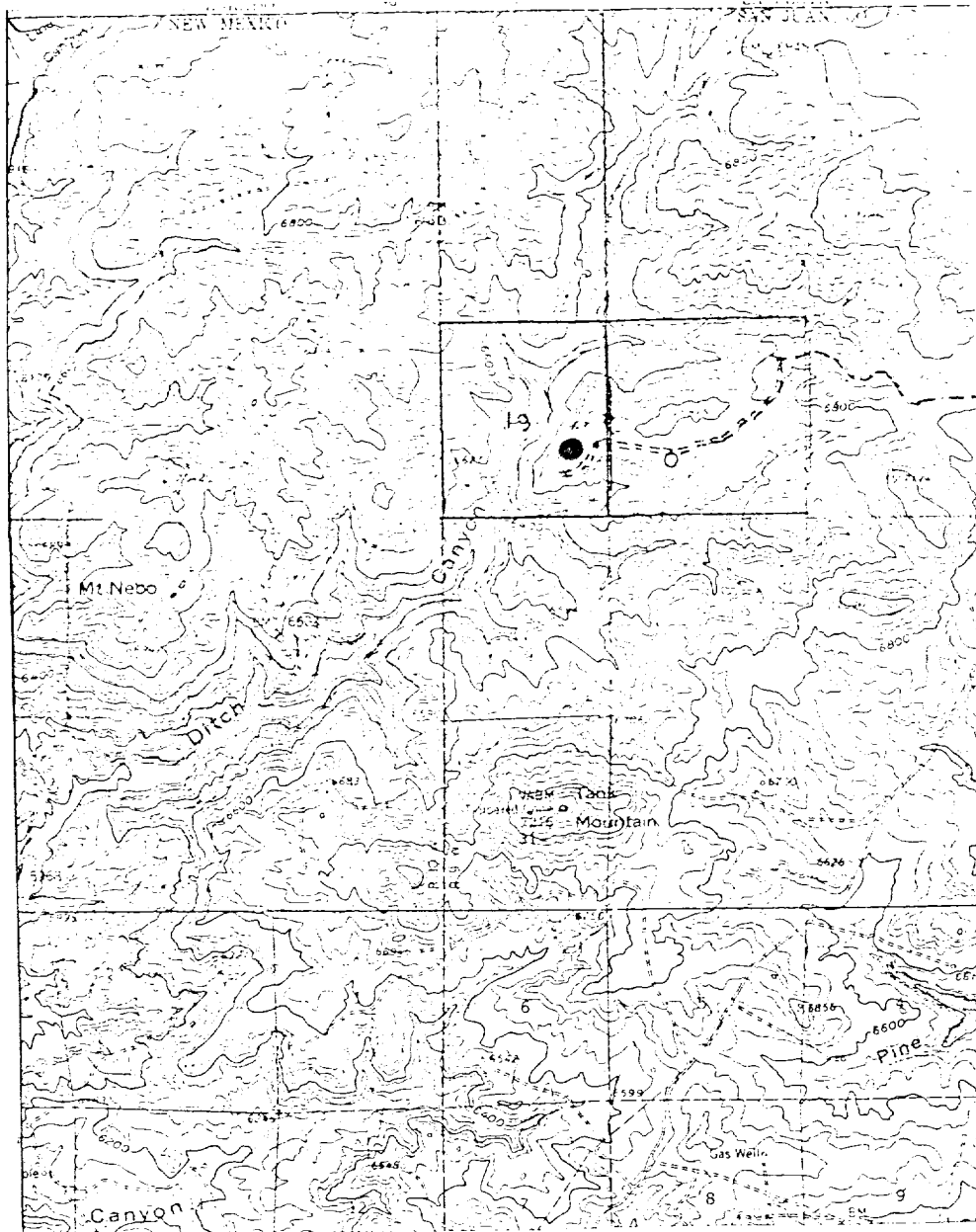
May 7, 1985

Registered Professional Engineer and Land Surveyor:

Fred B. Kerr Jr.

Certificate No. 4, 1985

Nebo #2
SE 19-32-9



Map #1

LEGEND OF RIGHT-OF-WAYS

EXISTING ROADS —————
 EXISTING PIPELINES + + +
 EXISTING ROAD & PIPELINE + + + +
 PROPOSED ROADS —————
 PROPOSED PIPELINES + + +
 PROPOSED ROAD & PIPELINE + + + +