

UNITED STATES  
DEPARTMENT OF THE INTERIOR  
BUREAU OF LAND MANAGEMENT

APPLICATION FOR PERMIT TO DRILL, DEEPEN, OR PLUG BACK

1a. TYPE OF WORK

DRILL ☒

DEEPEN ☐

PLUG BACK ☐

b. TYPE OF WELL

OIL  
WELL ☐

GAS  
WELL ☒

OTHER

SINGLE  
ZONE ☒

MULTIPLE  
ZONE ☐

2. NAME OF OPERATOR

El Paso Natural Gas Company

3. ADDRESS OF OPERATOR

PO Box 4289, Farmington, NM 87499

4. LOCATION OF WELL (Report location clearly and in accordance with any State requirements.)\*

At surface

1170'S, 1170'E

At proposed prod. zone

14. DISTANCE IN MILES AND DIRECTION FROM NEAREST TOWN OR POST OFFICE\*

9 miles North of Farmington, NM

15. DISTANCE FROM PROPOSED\*

LOCATION TO NEAREST  
PROPERTY OR LEASE LINE, FT.  
(Also to nearest drlg. unit line, if any) 1170'

16. NO. OF ACRES IN LEASE

1295.00

17. NO. OF ACRES ASSIGNED  
TO THIS WELL

319.00  
S 320.00

18. DISTANCE FROM PROPOSED LOCATION\*  
TO NEAREST WELL, DRILLING, COMPLETED,  
OR APPLIED FOR, ON THIS LEASE, FT. 3000'

19. PROPOSED DEPTH  
6300'

20. ROTARY OR CABLE TOOLS  
Rotary

21. ELEVATIONS (Show whether DF, RT, GR, etc.)

5688'GL

22. APPROX. DATE WORK WILL START\*

23.

PROPOSED CASING AND CEMENTING PROGRAM

SIZE OF HOLE	SIZE OF CASING	WEIGHT PER FOOT	SETTING DEPTH	QUANTITY OF CEMENT
12 1/4"	8 5/8"	24.0#	200'	165 cu.ft. circulated
7 7/8"	4 1/2"	10.5#	6300'	1682-cu.ft. 3 stages

1st stage - 353 cu.ft. to cover Gallup  
2nd stage - 559 cu.ft. to cover Mesa Verde  
3rd stage - 770 cu.ft. to cover Ojo Alamo

Selectively perforate and sand water fracture the Dakota formation.

A 3000 psi WP and 6000 psi test double gate preventer equipped with  
blind and pipe rams will be used for blow out prevention on this well.

This gas is dedicated.

The S/2 of Section 35 is dedicated to this well.

IN ABOVE SPACE DESCRIBE PROPOSED PROGRAM: If proposal is to deepen or plug back, give data on present productive zone and proposed new productive zone. If proposal is to drill or deepen directionally, give pertinent data on subsurface locations and measured and true vertical depths. Give blowout preventer program, if any.

24.

SIGNED

*Deann Dosh*

Drilling Clerk

11-28-85

DATE

(This space for Federal or State office use)

PERMIT NO.

APPROVAL DATE

APPROVED BY

*Judith A. Lane*

ACTING

DATE

DEC 16 1985

CONDITIONS OF APPROVAL, IF ANY:

OIL CON. DIV. MANAGER

SUPPLATIONS  
ATTACHED

DIST. 3

APPROVED FOR A PERIOD  
NOT TO EXCEED 1 YEAR.

\*See Instructions On Reverse Side

NEW MEXICO OIL CONSERVATION COMMISSION  
WELL LOCATION AND ACREAGE DEDICATION PLAT

Form C-102  
Supersedes C-128  
Effective 1-1-65

All distances must be from the outer boundaries of the Section.

Operator <b>EL PASO NATURAL GAS COMPANY</b>			Lease <b>PINON MESA "A" (MOO-C-1420-0626)</b>		Well No. <b>4</b>
Unit Letter <b>P</b>	Section <b>35</b>	Township <b>31N</b>	Range <b>14W</b>	County <b>San Juan</b>	
Actual Footage Location of Well: <b>1170</b> feet from the <b>South</b> line and <b>1170</b> feet from the <b>East</b> line					
Ground Level Elev. <b>5688</b>	Producing Formation <b>Dakota</b>		Pool <b>Basin</b>		Dedicated Acreage: <b>320.00 319.00</b> Acres

1. Outline the acreage dedicated to the subject well by colored pencil or hachure marks on the plat below.
2. If more than one lease is dedicated to the well, outline each and identify the ownership thereof (both as to working interest and royalty).
3. If more than one lease of different ownership is dedicated to the well, have the interests of all owners been consolidated by communitization, unitization, force-pooling, etc?

☐ Yes ☐ No If answer is "yes," type of consolidation \_\_\_\_\_

If answer is "no," list the owners and tract descriptions which have actually been consolidated. (Use reverse side of this form if necessary.) \_\_\_\_\_

No allowable will be assigned to the well until all interests have been consolidated (by communitization, unitization, forced-pooling, or otherwise) or until a non-standard unit, eliminating such interests, has been approved by the Commission.

Sec.

35

1170'

1170'

Scale: 1"=1000'

CERTIFICATION

I hereby certify that the information contained herein is true and complete to the best of my knowledge and belief.

Name  
*Peggy L. Cook*  
Position  
**Drilling Clerk**  
Company  
**El Paso Natural Gas**

Date  
**11-27-85**

I hereby certify that the well location shown on this plat was plotted from field notes of actual surveys made by me or under my supervision, and that the same is true and correct to the best of my knowledge and belief.

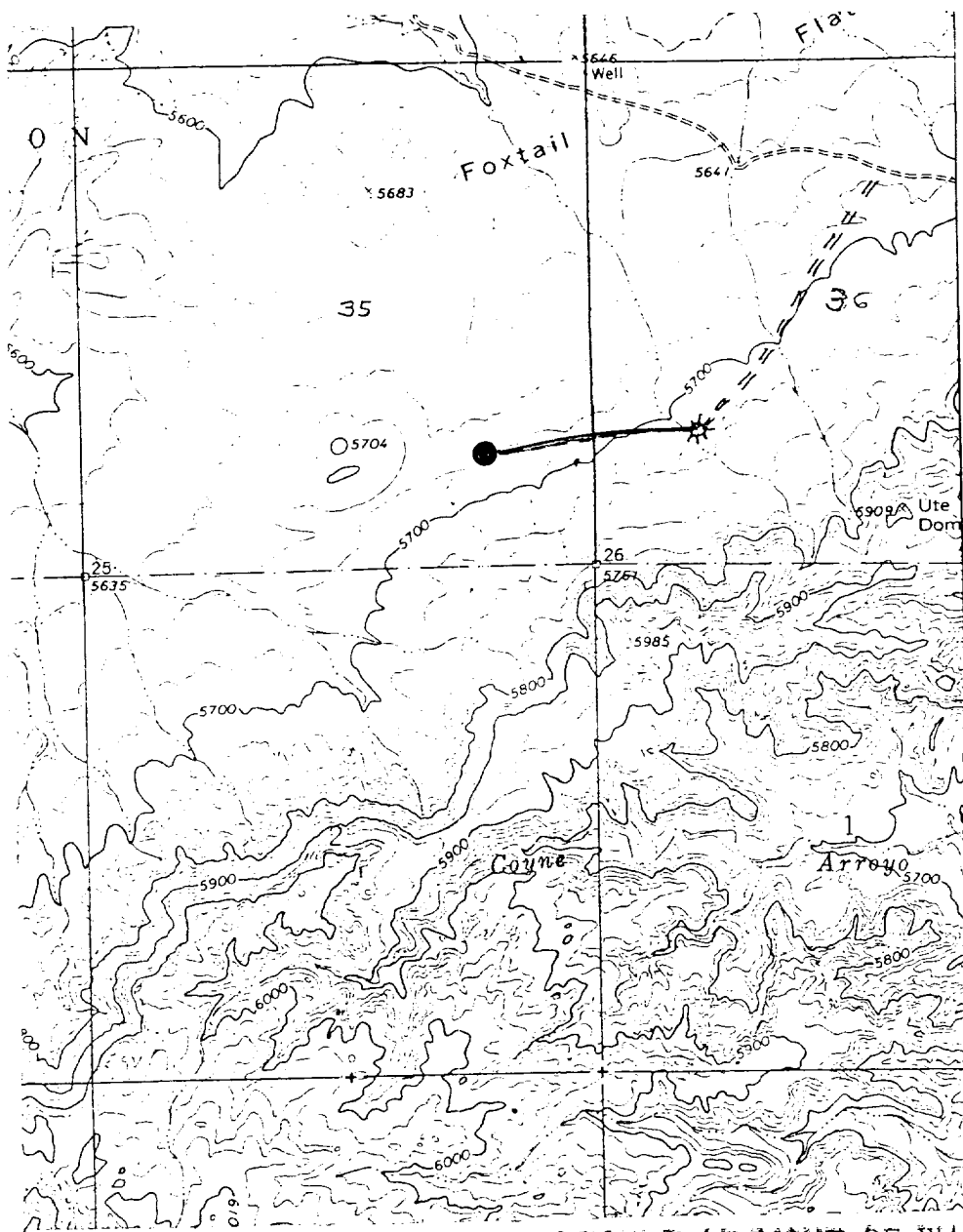
Date Surveyed  
**November 22, 1985**

Registered Professional Engineer and Land Surveyor

*Fred B. Kerr Jr.*  
**Fred B. Kerr Jr.**

Certificate No. **3950**

Vicinity Map for  
EL PASO NATURAL GAS COMPANY # 4 PINON MESA "A"  
1170' FSL 1170' FEL Sec. 35-T31N-R11W  
SAN JUAN COUNTY, NEW MEXICO



Map #1

LEGEND OF RIGHT-OF-WAYS

EXISTING ROADS	—————
EXISTING PIPELINES	+ + +
EXISTING ROAD & PIPELINE	+++
PROPOSED ROADS	—————
PROPOSED PIPELINES	+ + +
PROPOSED ROAD & PIPELINE	+++