

NEW MEXICO OIL CONSERVATION COMMISSION
WELL LOCATION AND ACREAGE DEDICATION PLAT

Form C-102
Supersedes C-73
Effective 1-4-63

WELL PLAT-EXHIBIT I

All distances must be from the outer boundaries of the Section.

Operator UNION TEXAS PETROLEUM CORPORATION			Lease PAYNE		Well No. 1-R
Unit Letter M	Section 20	Township 32 NORTH	Range 10 WEST	County SAN JUAN	
Actual Footage Location of Well 790 feet from the SOUTH line and 790 feet from the WEST line					
Ground Level Elev. 6013	Producing Formation Blanco	Pool Mesaverde	Dedicated Acreage S/4 315.81 Acres		

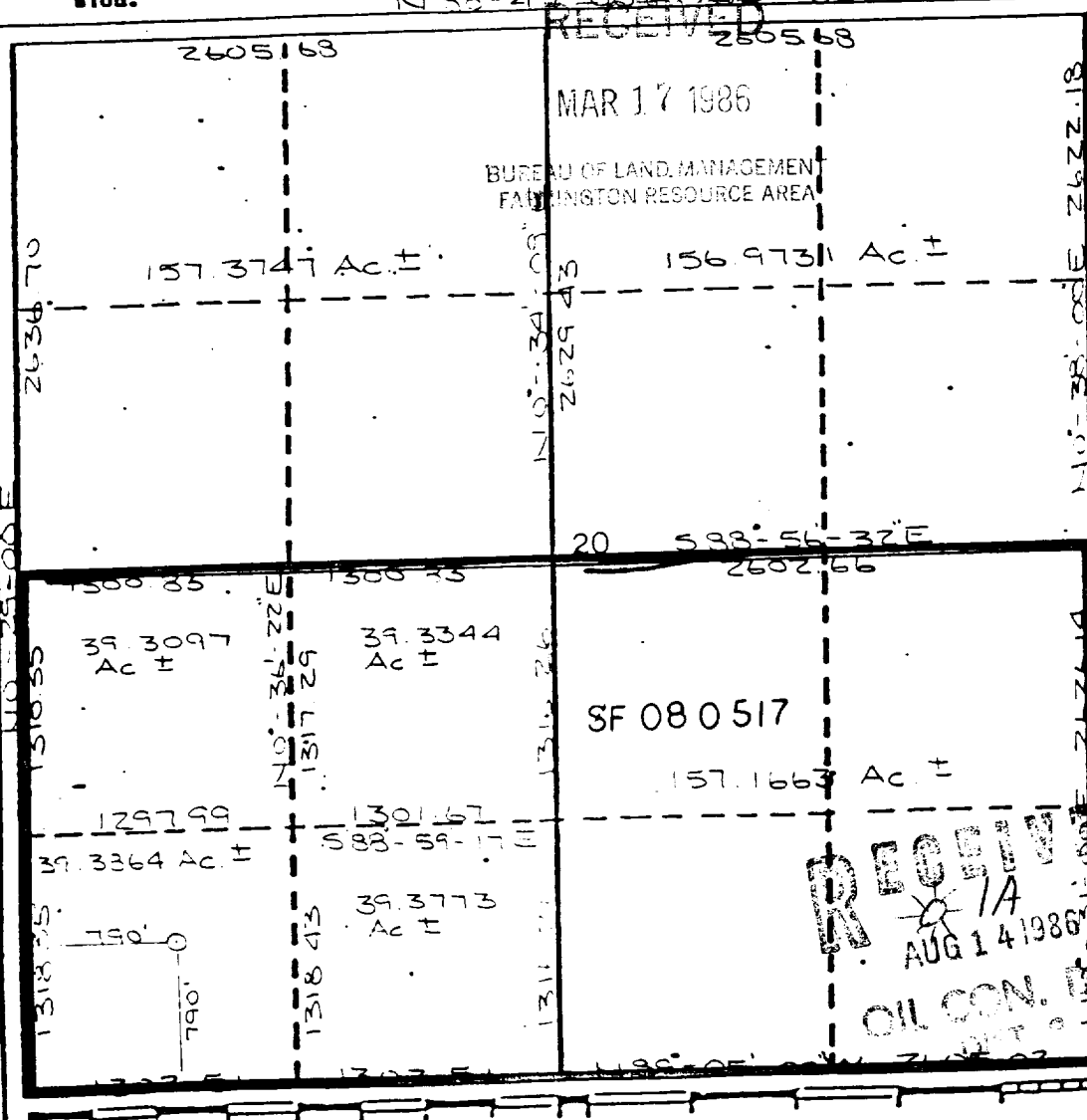
1. Outline the acreage dedicated to the subject well by colored pencil or hachure marks on the plat below.
2. If more than one lease is dedicated to the well, outline each and identify the ownership thereof (both as to working interest and royalty).
3. If more than one lease of different ownership is dedicated to the well, have the interests of all owners been consolidated by communitization, unitization, force-pooling, etc?

☒ Yes ☐ No If answer is "yes," type of consolidation Communitization

If answer is "no," list the owners and tract descriptions which have actually been consolidated. (Use reverse side of this form if necessary.)

No allowable will be assigned to the well until all interests have been consolidated (by communitization, unitization, forced-pooling, or otherwise) or until a non-standard unit, eliminating such interests, has been approved by the Commission.

N 88° 42' 00" E 5211.36



CERTIFICATION

I hereby certify that the information contained herein is true and complete to the best of my knowledge and belief.

L. R. La Follette

Name
L. R. La Follette
Position
Regulatory Analyst
Company
Union Texas Petroleum
Date
3-10-86

I hereby certify that the well location shown on this plat was plotted from field notes of actual surveys made by me or under my supervision, and that the same is true to the best of my knowledge and belief.

7259
REGISTERED LAND SURVEYOR
OCTOBER 14 1984
George R. Tompkins
Certificate No.
7259