

UNITED STATES  
DEPARTMENT OF THE INTERIOR  
BUREAU OF LAND MANAGEMENT

SUBMIT IN TRIPPLICATE\*  
(Other instructions on  
reverse side)

Form approved.  
Budget Bureau No. 1004-0136  
Expires August 31, 1985

APPLICATION FOR PERMIT TO DRILL, DEEPEN, OR PLUG BACK

1a. TYPE OF WORK  
DRILL ☒ DEEPEN ☐ PLUG BACK ☐

b. TYPE OF WELL  
OIL WELL ☐ GAS WELL ☒ OTHER ☐ SINGLE ZONE ☒ MULTIPLE ZONE ☐

2. NAME OF OPERATOR  
Union Texas Petroleum

3. ADDRESS OF OPERATOR  
375 U.S. Highway 64, Farmington New Mexico 87401

4. LOCATION OF WELL (Report location clearly and in accordance with any State requirements.)\*  
At surface 590' FNL & 810' FEL  
At proposed prod. zone

14. DISTANCE IN MILES AND DIRECTION FROM NEAREST TOWN OR POST OFFICE\*  
3 miles north of Cedar Hill, New Mexico

15. DISTANCE FROM PROPOSED\*  
LOCATION TO NEAREST  
PROPERTY OR LEASE LINE, FT.  
(Also to nearest drilg. unit line, if any)  
810' from lease  
590' from DU

18. NO. OF ACRES IN LEASE  
1680 16 33.69

19. DISTANCE FROM PROPOSED LOCATION\*  
TO NEAREST WELL, DRILLING, COMPLETED,  
OR APPLIED FOR, ON THIS LEASE, FT.  
155'

21. ELEVATIONS (Show whether DF, RT, GR, etc.)  
6898 G.L. (graded)

23. PROPOSED CASING AND CEMENTING PROGRAM

SIZE OF HOLE	SIZE OF CASING	WEIGHT PER FOOT	SETTING DEPTH	QUANTITY OF CEMENT
12-1/4"	9-5/8"	32.3#	1320'	750 sxs (885 cu.ft.)
8-3/4"	7"	23.0#	4010'	375 sxs (907 cu.ft.)
6-1/4"	4-1/2" liner	10.5	3810'-8425'	555 sxs (871 cu.ft.)

Union Texas Petroleum wishes to advise we intend to drill 12-1/4" hole with mud to 1320+ and set 9-5/8" 32.3#, H-40, ST&C csg. to 1320'+, cementing to surface with 750 sxs (885 cu.ft.) C1 "B" with 2% CaCl2 and 1/4# flocele/sk. Wait on cement for 12 hrs.

Nipple up, test BOP. Drill 8-3/4" hole with mud out of surface to 4010'. Set 7", 23.0#, K-55, ST&C intermediate csg. to 4010', cementing to surface with 275 sxs (789 cu.ft.) 65-35 POZ with 12% gel and 12-1/4# gilsonite/sk, tailed by 100 sxs (118 cu.ft) C1 "B" with 2% CaCl2.

Drill 6-1/4" hole with air out of intermediate to a TD of 8425'. Log well, run 4-1/2", 10.5#, K-55, ST&C liner from 3810' to 8425'. Cement liner into intermediate csg with 555 sxs (871 cu.ft.) 50-50 POZ with 4% gel, 6-1/4# gilsonite/sk, and 10# salt/sk.

Following perforation and treatment of the Dakota formation, standard production equipment will be installed. Buried cathodic protection cable will be tied in the existing thermo-electric generator on the Payne 5. An Unorthodox Location Request has been made of the NMOC.

IN ABOVE SPACE DESCRIBE PROPOSED PROGRAM: If proposal is to deepen or plug back, give data on present productive zone and proposed new productive zone. If proposal is to drill or deepen directionally, give pertinent data on subsurface locations and measured and true vertical depths. Give blowout preventer program, if any.

24. SIGNED Robert C. Frank TITLE Permit Coordinator DATE July 24, 1987

(This space for Federal or State office use)

PERMIT NO. \_\_\_\_\_

APPROVAL DATE AUG 26 1987

APPROVED BY \_\_\_\_\_  
CONDITIONS OF APPROVAL, IF ANY:

TITLE \_\_\_\_\_

OIL CON. DIV.  
DIST. 3

DATE \_\_\_\_\_  
/s/ James E. Edwards Jr.

NMOC

\*See Instructions On Reverse Side

for persons knowingly and willfully to make to any department or agency of the

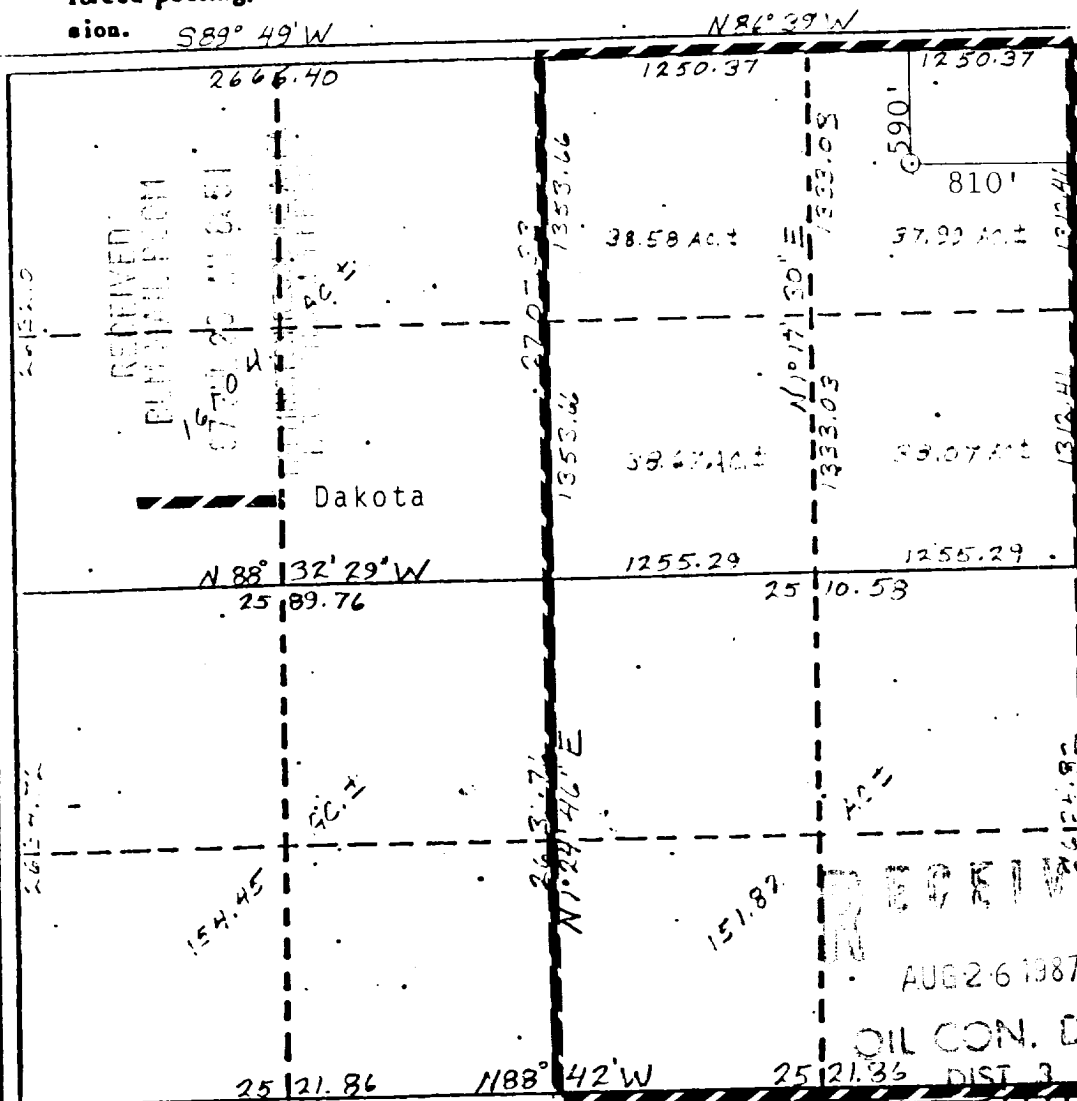
Form C-100  
Supersedes C-121  
Effective 1-1-83

All distances must be from the outer boundaries of the Section.									
Operator UNION TEXAS PETROLEUM				Lessee PAYNE				Well No. 11	
Unit Letter A		Section 27		Township 32N		Range 10W		County SAN JUAN	
Actual Footage Location of Wells 590 feet from the North line and 810 feet from the East line									
Ground Level Elev. 6898		Producing Formation Dakota				Pool Basin		Dedicated Acreages E/2 305.02 Acres	

- ☐ Yes   ☐ No   If answer is "yes," type of consolidation

If answer is "no," list the owners and tract descriptions which have actually been consolidated. (Use reverse side of this form if necessary.)

No allowable will be assigned to the well until all interests have been consolidated (by communitization, unitization, forced-pooling, or otherwise) or until a non-standard unit, eliminating such interests, has been approved by the Commission. S89° 49' W N86° 39' W



I hereby certify that the information contained herein is true and complete to the best of my knowledge and belief.

Robert C Frank

Name \_\_\_\_\_

Robert C. Frank

**Position**

Permit Coordinator

**Company**

Union Texas Petroleum

Date \_\_\_\_\_

July 27, 1987

I hereby certify that the well location shown on this plat was plotted from field notes of actual surveys made by me or under my supervision and that the same is true and correct to the best of my knowledge and belief.

**Date Surveyed**

July 1, 1987

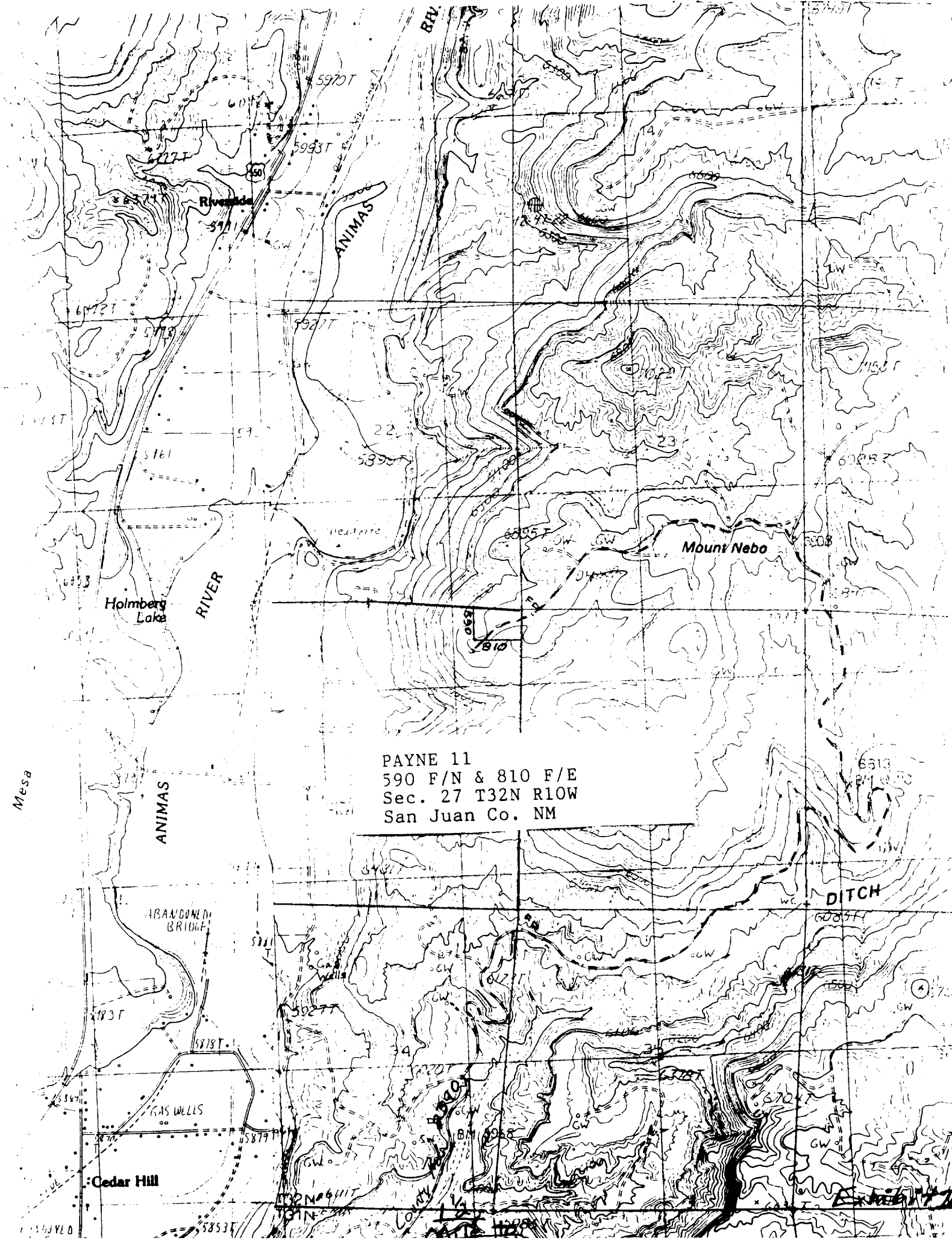
Registered Professional Engineer  
and/or Land Surveyor

Cecil B. Tullis

**Certificate No.**

9672

Exhibit I



PAYNE 11  
590 F/N & 810 F/E  
Sec. 27 T32N R10W  
San Juan Co. NM

