

UNITED STATES
DEPARTMENT OF THE INTERIOR
BUREAU OF LAND MANAGEMENT

APPLICATION FOR PERMIT TO DRILL, DEEPEN, OR PLUG BACK

1a. TYPE OF WORK

DRILL ☒

DEEPEN ☐

PLUG BACK ☐

b. TYPE OF WELL

OIL
WELL ☐

GAS
WELL ☒

OTHER

SINGLE
ZONE ☐

MULTIPLE
ZONE ☒

2. NAME OF OPERATOR

Wintershall Corporation

(303) 694-0988

3. ADDRESS OF OPERATOR

5251 DTC Pkwy., Suite 500, Englewood, Co. 80111

4. LOCATION OF WELL (Report location clearly and in accordance with any State requirements.)*

At surface

1450' FNL & 1030' FEL (SENE)

At proposed prod. zone

Same

14. DISTANCE IN MILES AND DIRECTION FROM NEAREST TOWN OR POST OFFICE*

10 air miles NE of Kirtland, New Mexico

15. DISTANCE FROM PROPOSED*
LOCATION TO NEAREST
PROPERTY OR LEASE LINE, FT.
(Also to nearest drlg. unit line, if any)

1,030'

18. DISTANCE FROM PROPOSED LOCATION*
TO NEAREST WELL, DRILLING, COMPLETED,
OR APPLIED FOR, ON THIS LEASE, FT.

4,952'

16. NO. OF ACRES IN LEASE

~250,000

19. PROPOSED DEPTH

6,000'

17. NO. OF ACRES ASSIGNED
TO THIS WELL

320

20. ROTARY OR CABLE TOOLS

Rotary

21. ELEVATIONS (Show whether DF, RT, GR, etc.)

5,678' ungraded ground

22. APPROX. DATE WORK WILL START*

Oct. 1, 1987

23. PROPOSED CASING AND CEMENTING PROGRAM

| SIZE OF HOLE | SIZE OF CASING | WEIGHT PER FOOT | SETTING DEPTH | QUANTITY OF CEMENT |
|--------------|----------------|-----------------|---------------|-----------------------|
| 12 1/4" | 8 5/8" | 24# K55 | 2400' | 125 SK 2 1/2" 1400 SK |
| 7 7/8" | 4 1/2" | 10.5# J55 | 0-6000' | 125 SK 2 1/2" 1400 SK |

OIL
CON. DIV.
DIST. 2

See PAGES 2-4 for casing, cement, and pressure control information.

RECEIVED
Bureau of Land Management

AUG 27 1987

Durango, Colorado

Approval of this agreement/application does not warrant or
certify that the applicant holds legal or equitable title
to those rights in the subject lease(s) which would entitle
the applicant to conduct operations thereon.

IN ABOVE SPACE DESCRIBE PROPOSED PROGRAM: If proposal is to deepen or plug back, give data on present productive zone and proposed new productive zone. If proposal is to drill or deepen directionally, give pertinent data on subsurface locations and measured and true vertical depths. Give blowout preventer program, if any.

24.

SIGNED

Brian Wood

TITLE

Consultant

DATE

8-23-87

(This space for Federal or State office use)

PERMIT NO.

APPROVAL DATE

APPROVED FOR A PERIOD
NOT TO EXCEED 1 YEAR.

APPROVED BY

L. Mark Hollis

TITLE ACTING AREA MANAGER

DATE

NOV 30 1987

CONDITIONS OF APPROVAL, IF ANY:

STIPULATIONS
ATTACHED

ck
50 *Nmoed*

cc: BIA, BLM (3 + 2 for NMOCD), Clausen (3), G. Hammond, Howell (3)

*See Instructions On Reverse Side

NEW MEXICO OIL CONSERVATION COMMISSION
WELL LOCATION AND ACREAGE DEDICATION PLAT

Form C-102
Supersedes C-101
Effective 1-1-65

All distances must be from the outer boundaries of the Section.

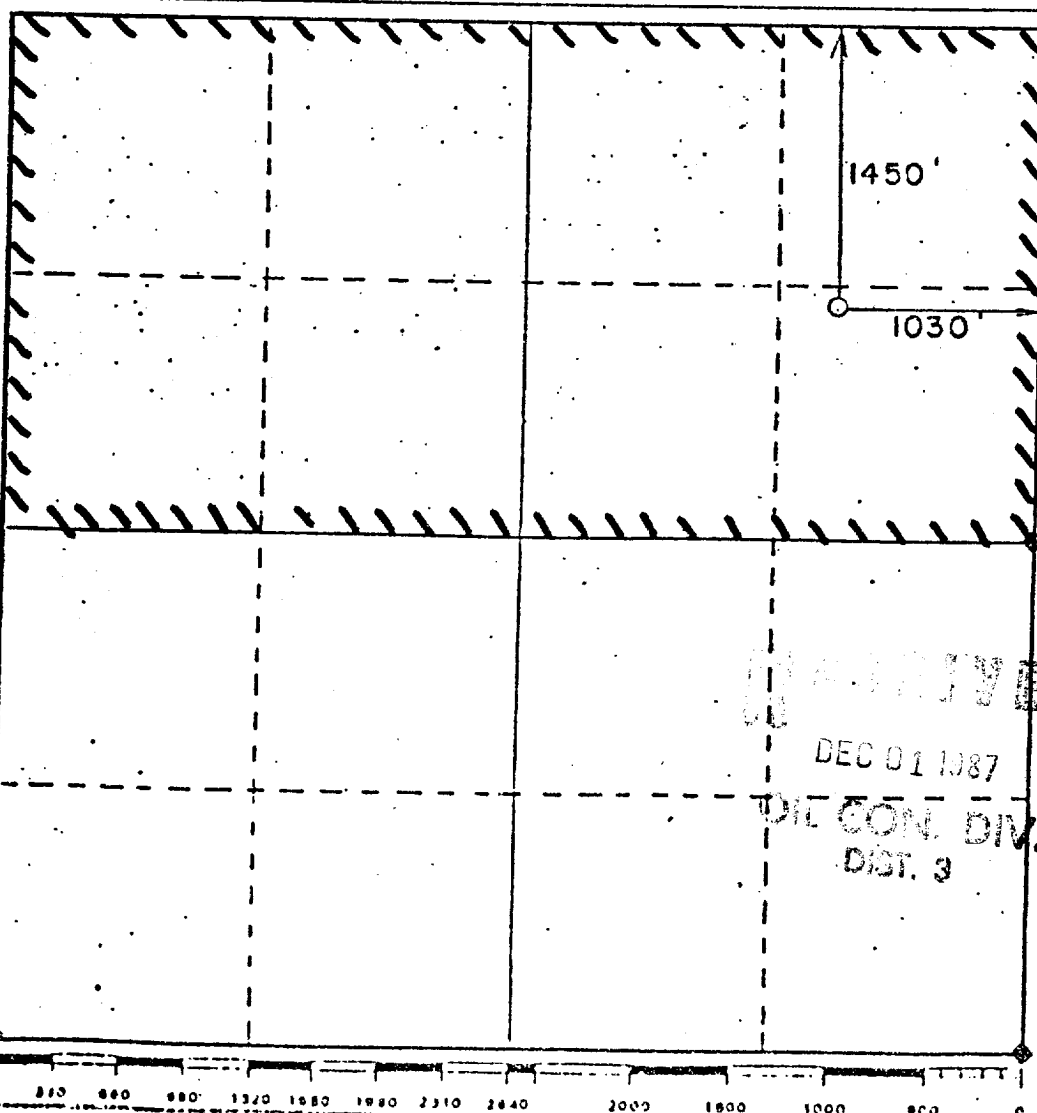
| | | | | |
|--|--------------------------------------|--|---------------------------------------|---------------------------------------|
| Operator WINTERSHALL CORPORATION | | Lease M00-C-1420-4387 <i>Ute 27</i> | | Well No. 92 UMT 27-4 |
| Unit Letter H | Section 27 | Township 31 North | Range 14 West | County San Juan |
| Actual Footage Location of Well: | | | | |
| 1450 feet from the North | | line and 1030 feet from the East | | line |
| Ground Level Elev. 5678' | Producing Formation Dakota | Pool Basin Dakota Gas | Dedicated Acreage 320 Acres | |

1. Outline the acreage dedicated to the subject well by colored pencil or hachure marks on the plat below.
2. If more than one lease is dedicated to the well, outline each and identify the ownership thereof (both as to working interest and royalty).
3. If more than one lease of different ownership is dedicated to the well, have the interests of all owners been consolidated by communitization, unitization, force-pooling, etc?

☐ Yes ☐ No If answer is "yes," type of consolidation _____

If answer is "no," list the owners and tract descriptions which have actually been consolidated. (Use reverse side of this form if necessary.) _____

No allowable will be assigned to the well until all interests have been consolidated (by communitization, unitization, forced-pooling, or otherwise) or until a non-standard unit, eliminating such interests, has been approved by the Commission.

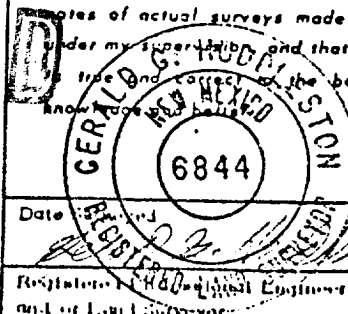


CERTIFICATION

I hereby certify that the information contained herein is true and complete to the best of my knowledge and belief.

Name Brian Wood
Position Consultant
Company Wintershall Corporation
Date August 23, 1987

I hereby certify that the well location shown on this plat was plotted from field notes of actual surveys made by me or under my supervision, and that the same are true and correct to the best of my knowledge and belief.



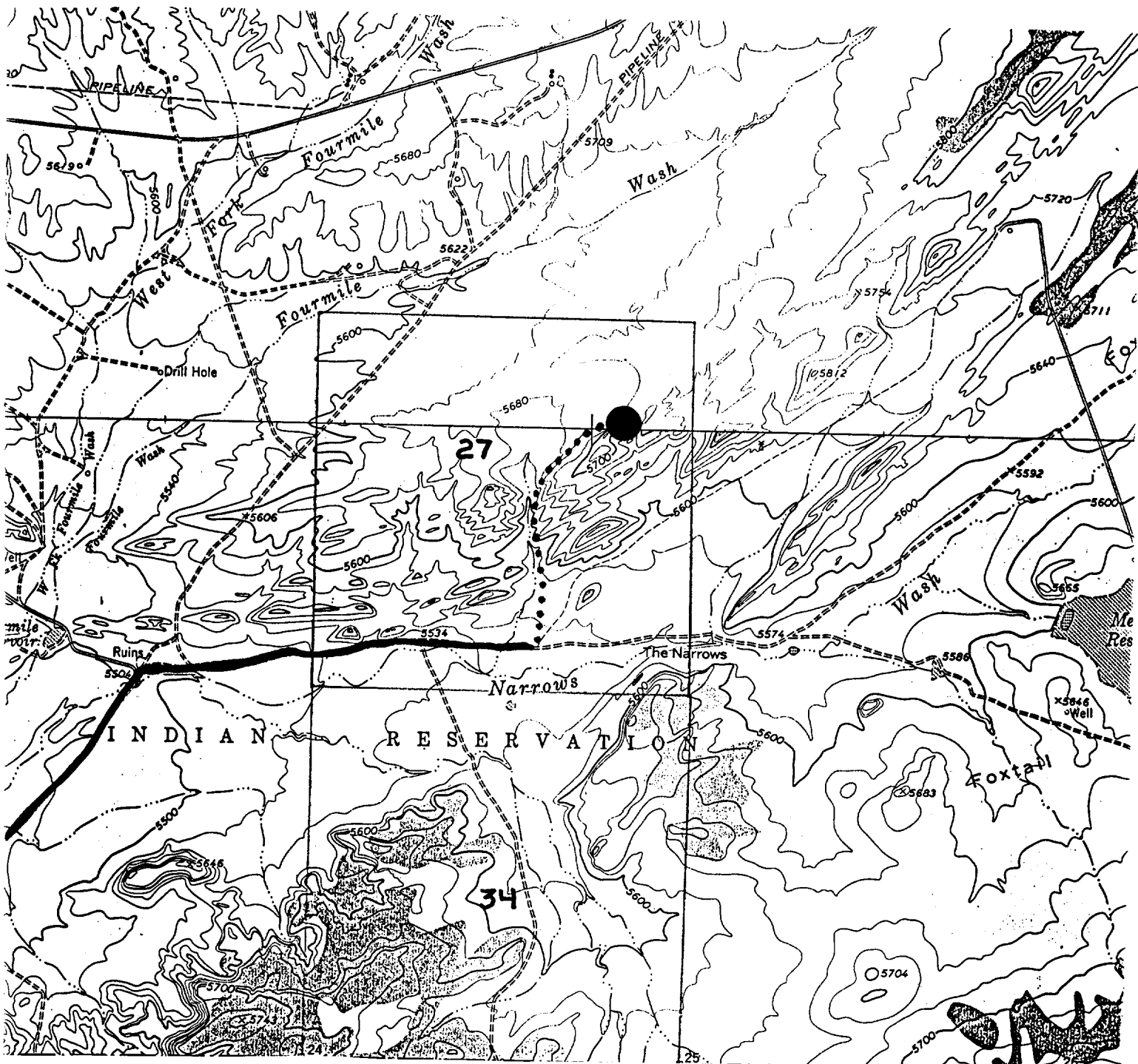
Date August 23, 1987
Registered Professional Engineer and/or Land Surveyor

6844

Certificate No.

Wintershall Corporation
 Ute Mtn. Ute 27-42
 1450' FNL & 1030' FEL
 Sec. 27, T. 31 N., R. 14 W.
 San Juan County, New Mexico

PAGE 14



Ute Mtn. Ute 27-42 Well: ●

Existing Access: —

New Access: