

All distances must be from the outer boundaries of the Section.

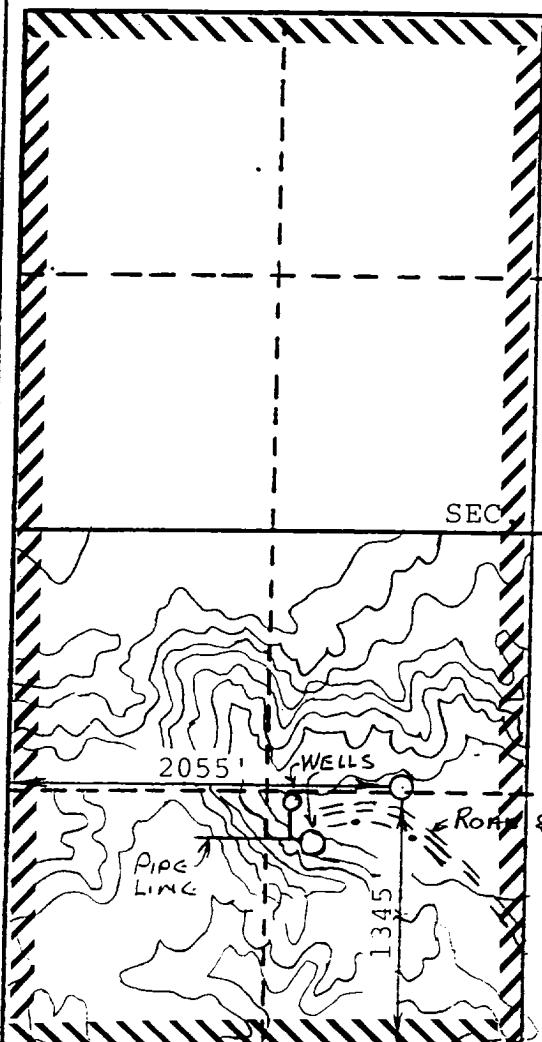
Operator Southland Royalty Company		Lease HARRISON (SF-080314)		Well No. 100
Unit Letter K	Section 31	Township 32-N	Range 30-W	County SAN JUAN
Actual Footage Location of Well: 1345 feet from the SOUTH line and 2055 feet from the WEST line				
Ground Level Elev. 5966	Producing Formation Fruitland	Pool Cedar Hill Fruitland Basal Coal	Dedicated Acreage 320 Acres	

1. Outline the acreage dedicated to the subject well by colored pencil or hachure marks on the plat below.
2. If more than one lease is dedicated to the well, outline each and identify the ownership thereof (both as to working interest and royalty).
3. If more than one lease of different ownership is dedicated to the well, have the interests of all owners been consolidated by communitization, unitization, force-pooling, etc?

☒ Yes ☐ No If answer is "yes," type of consolidation communitization agreement NM-80126

If answer is "no," list the owners and tract descriptions which have actually been consolidated. (Use reverse side of this form if necessary.)

No allowable will be assigned to the well until all interests have been consolidated (by communitization, unitization, forced-pooling, or otherwise) or until a non-standard unit, eliminating such interests, has been approved by the Division



RECEIVED

APR 26 1990

OIL CON. DIV.
DIST. 3

3 ACCEPTED FOR RECORD

APR 23 1990

FARMINGTON RESOURCE AREA

BY

CERTIFICATION

I hereby certify that the information contained herein is true and complete to the best of my knowledge and belief.

Name Drilling Clerk

Position Southland Royalty

Company

Date

ISAAC L. WEAVER
NEW MEXICO
REGISTERED PROFESSIONAL ENGINEER
AND/OR LAND SURVEYOR

FEBRUARY 11, 1988

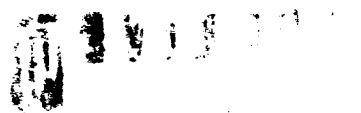
Date Surveyed

ISAAC L. WEAVER

Registered Professional Engineer
and/or Land Surveyor

Certificate No.

8966



DEPT. OF
COMM. DIV.

ACCEPTED FOR POSTAGE

SEP 18 1964

U.S. DEPARTMENT OF COMMERCE

COMMUNICATIONS DIVISION