

UNITED STATES
DEPARTMENT OF THE INTERIOR
BUREAU OF LAND MANAGEMENT

APPLICATION FOR PERMIT TO DRILL, DEEPEN, OR PLUG BACK

1A. TYPE OF WORK DRILL <input checked="" type="checkbox"/> DEEPEN <input type="checkbox"/> PLUG BACK <input type="checkbox"/>		5. LEASE DESIGNATION AND SERIAL NO. SF-078483A		
1B. TYPE OF WELL OIL WELL <input type="checkbox"/> GAS WELL <input checked="" type="checkbox"/> OTHER <input type="checkbox"/>		6. IF INDIAN, ALLOTTEE OR TRIBE NAME		
2. NAME OF OPERATOR El Paso Natural Gas Company MERIDIAN OIL INC.		7. UNIT AGREEMENT NAME Allison Unit		
3. ADDRESS OF OPERATOR PO Box 4289, Farmington, NM 87499		8. FARM OR LEASE NAME Allison Unit		
4. LOCATION OF WELL (Report location clearly and in accordance with any State requirements.) At surface 841'S, 790'E At proposed prod. zone		9. WELL NO. 108		
14. DISTANCE IN MILES AND DIRECTION FROM NEAREST TOWN OR POST OFFICE* 6 miles from Allison CO.		10. FIELD AND POOL, OR WILDCAT Undes. Fruitland COAL		
15. DISTANCE FROM PROPOSED* LOCATION TO NEAREST PROPERTY OR LEASE LINE, FT. (Also to nearest drig. unit line, if any) 790'		11. SEC., T., R., M., OR BLK. Sec. 23, T. 1-S, R. 7-W NMPM P 32N		
16. NO. OF ACRES IN LEASE Unit 813.03		12. COUNTY OR PARISH San Juan		
17. NO. OF ACRES ASSIGNED TO THIS WELL 160.00		13. STATE NM		
18. DISTANCE FROM PROPOSED LOCATION* TO NEAREST WELL, DRILLING, COMPLETED OR APPLIED FOR, ON THIS LEASE, FT. 500'		19. PROPOSED DEPTH 3275'		
20. ROTARY OR CABLE TOOLS Rotary		21. ELEVATIONS (Show whether DF, RT, GR, etc.) 6545' GL		
22. APPROX. DATE WORK WILL START*		23. DRILLING OPERATIONS AUTHORIZED ARE SUBJECT TO COMPLIANCE WITH ATTACHED PROPOSED CASING AND CEMENTING PROGRAM "GENERAL REQUIREMENTS"		
SIZE OF HOLE 12 1/4"	SIZE OF CASING 9 5/8"	WEIGHT PER FOOT 32.3#	SETTING DEPTH 200'	QUANTITY OF CEMENT 130 cf. circulated
8 3/4"	7"	20.0#	3150'	990 cf to cover Ojo Alamo
6 1/4"	5 1/2" liner	23.0#	3275'	do not cement

The Fruitland formation will be completed.

A 3000 psi WP and 6000 psi test double gate preventer equipped with blind and pipe rams will be used for blow out prevention on this well.

This gas is dedicated.

The SE/4 of Section 23 is dedicated to this well.

RECEIVED
AUG 05 1988
OIL CON. DIV.
DIST. 3

IN ABOVE SPACE DESCRIBE PROPOSED PROGRAM: If proposal is to deepen or plug back, give data on present productive zone and proposed new productive zone. If proposal is to drill or deepen directionally, give pertinent data on subsurface locations and measured and true vertical depths. Give blowout preventer program, if any.

24. SIGNED [Signature] TITLE Drilling Clerk DATE 04-20-88
(This space for Federal or State office use)

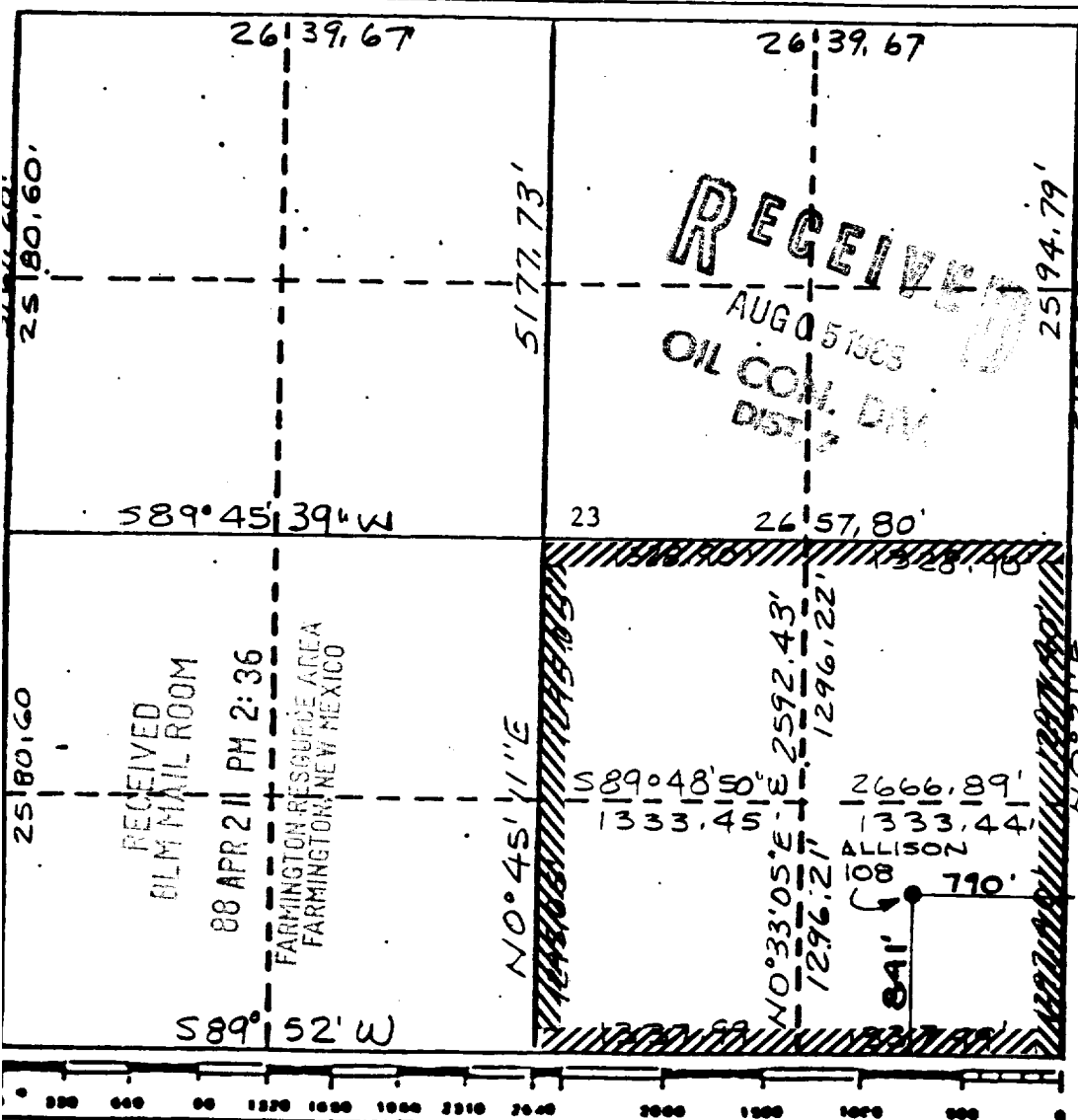
PERMIT NO. _____ APPROVAL DATE _____
APPROVED BY _____ TITLE _____
CONDITIONS OF APPROVAL, IF ANY:

*See Instructions On Reverse Side

Form C-102
Supersedes C-120
Effective 1-4-63

Operator MERIDIAN OIL INC.					Lease ALLISON Unit (SF-078483A)		Well No. 108	
El Paso Natural Gas Company								
Unit Letter	Section	Township	Range	County				
P	23	32 NORTH	7 WEST	SAN JUAN				
Actual Footage Location of Wells								
841		feet from the SOUTH		line and 790		feet from the EAST		line
Ground Level Elev.	Producing Formation		Pool			Dedicated Acres		
6545	Fruitland <i>CORL</i>		Undesignated			160		

- 5279.34'



Certificate No.
• 6857

