

STATE OF NEW MEXICO  
ENERGY AND MINERALS DEPARTMENT

OIL CONSERVATION  
P. O. BOX 2082  
SANTA FE, NEW MEXICO 37501

Form C-102  
Revised 10

All distances must be from the outer boundaries of the Section.

Operator <b>Meridian Oil Inc.</b>		Lease <b>Allison Unit Com (Fee)</b>		Well No. <b>135</b>
Unit Letter <b>N</b>	Section <b>9</b>	Township <b>32 North</b>	Range <b>6 West</b>	County <b>San Juan</b>
Actual Footage Location of Well: <b>900</b> feet from the <b>South</b> line and <b>1490</b> feet from the <b>West</b> line				
Ground Level Elev. <b>6140'</b>	Producing Formation <b>Fruitland Coal</b>	Pool <b>Basin</b>	Dedicated Acreage: <b>278.2</b>	

1. Outline the acreage dedicated to the subject well by colored pencil or hachure marks on the plat below.
2. If more than one lease is dedicated to the well, outline each and identify the ownership thereof (both as to well interest and royalty).
3. If more than one lease of different ownership is dedicated to the well, have the interests of all owners been consolidated by communitization, unitization, force-pooling, etc?

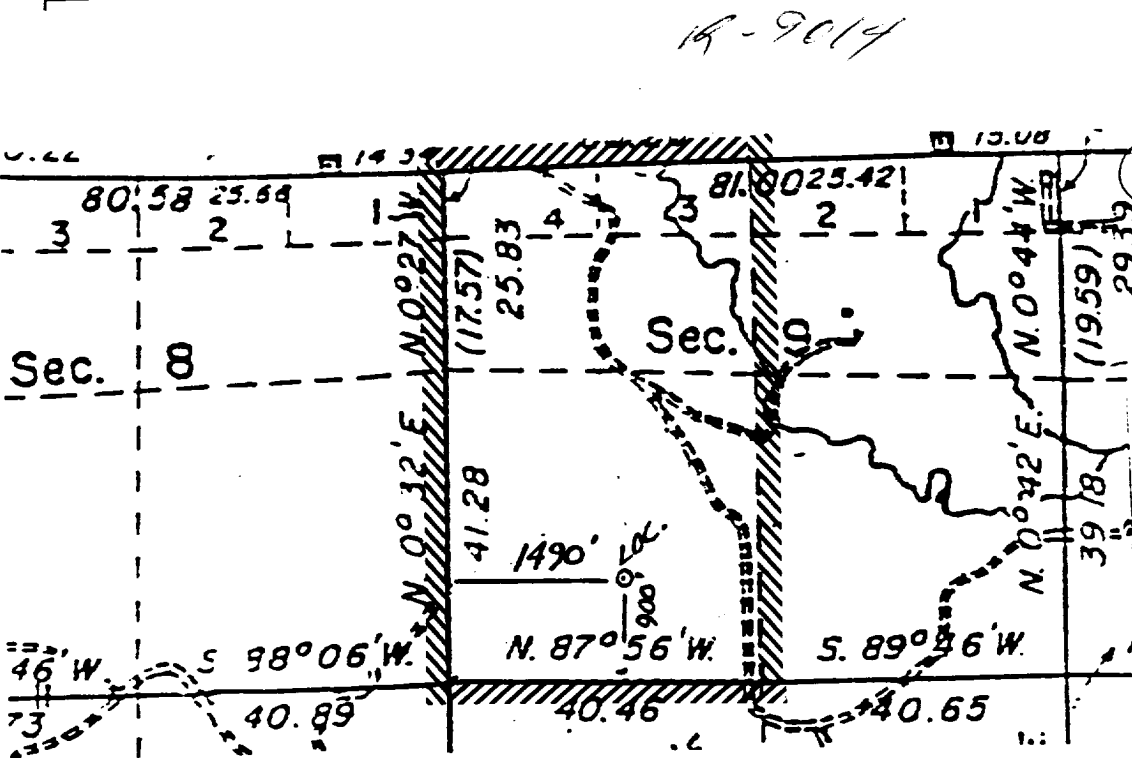
☒ Yes ☐ No

If answer is "yes," type of consolidation

*Designation of pooled unit*  
communitization agreement  
~~will be obtained~~

If answer is "no," list the owners and tract descriptions which have actually been consolidated. (Use reverse of this form if necessary.)

No allowable will be assigned to the well until all interests have been consolidated (by communitization, unitization, force-pooling, or otherwise) or until a non-standard unit, eliminating such interests, has been approved by the Director.



CERTIFICATION

I hereby certify that the information contained herein is true and complete to the best of my knowledge and belief.

Name  
*Neale C. Edwards*  
Regulatory Affairs  
Position  
**Meridian Oil Inc.**  
Company  
Date *10-4-89*

I hereby certify that the information shown on this plat was prepared from notes of actual survey made by me under supervision, and that it is true and correct to the best of my knowledge and belief.

Date Surveyed **8-31-88**

Registered Professional Engineer and/or Land Surveyor

**Neale C. Edwards**

Certificate No. **6357**