

UNITED STATES
DEPARTMENT OF THE INTERIOR
BUREAU OF LAND MANAGEMENT

APPLICATION FOR PERMIT TO DRILL, DEEPEN, OR PLUG BACK

1a. TYPE OF WORK

DRILL ☒

DEEPEN ☐ PLUG-BACK ☐

b. TYPE OF WELL

OIL
WELL ☐

GAS
WELL ☒

OTHER ☐

SINGLE
ZONE ☐

MULTIPLE
ZONE ☐

2. NAME OF OPERATOR

Union Texas Petroleum : Attention, Ken White

3. ADDRESS OF OPERATOR

P. O. Box 2120, Houston, TX 77252

4. LOCATION OF WELL (Report location clearly and in accordance with any State requirements.)
At surface

1590' FSL & 1000' FEL
At proposed prod. zone

14. DISTANCE IN MILES AND DIRECTION FROM NEAREST TOWN OR POST OFFICE*

14 miles E of Aztec NM

15. DISTANCE FROM PROPOSED*

LOCATION TO NEAREST
PROPERTY OR LEASE LINE, FT. 1000' from lease
(Also to nearest drig. unit line, if any)

16. NO. OF ACRES IN LEASE

2,446.60

17. NO. OF ACRES ASSIGNED
TO THIS WELL

5 1/2 315.09

18. DISTANCE FROM PROPOSED LOCATION*
TO NEAREST WELL, DRILLING, COMPLETED, 750'
OR APPLIED FOR, ON THIS LEASE, FT.

19. PROPOSED DEPTH
2950'

20. ROTARY OR CABLE TOOLS
Rotary

21. ELEVATIONS (Show whether DF, RT, GR, etc.)

5942' G. L. (graded)
This action is subject to procedural review and appeal pursuant to 43 CFR 3165.3

22. APPROX. DATE WORK WILL START*

February 15, 1989

23. and appeal pursuant to 43 CFR 3165.3
PROPOSED CASING AND CEMENTING PROGRAM

DRILLING

SUBJECT QUANTITY OF CEMENT

GENERAL

210 sx (248 cu. ft.)

320 sx (791 cu. ft.)

SIZE OF HOLE	SIZE OF CASING	WEIGHT PER FOOT	SETTING DEPTH
12-1/4	9-5/8	32.3	350
8-3/4	7	23.0	2950

Union Texas Petroleum wishes to advise we intend to drill a 12-1/4" hole with mud to 350' and set 9-5/8", 32.3#, H-40, ST&C csg to 350', cementing to surface with 210 sx (248 cu. ft.) C1 "B" with 2% CaCl2 and 1/4# flocele/sx. Wait on cement 12 hours.

Nipple up, test BOP. Drill 8-3/4" hole with mud out of surface to 2950'. Set 7", 23#, N-80, LT&C csg to 2950', cementing to surface with 220 sx (248 cu. ft.) 65/35 POZ with 12% gel and 12-1/4# gilsonite/sx, tailed by 100 sx (157 cu. ft.) 50/50 POZ with 4% gel, 6-1/4# gilsonite/sx and 10# salt/sx.

RECEIVED

APR 1 1989

OIL CON. DIV.
DIST. 3

RECEIVED

APR 4 1989

OIL CON. DIV.
DIST. 3

IN ABOVE SPACE DESCRIBE PROPOSED PROGRAM: If proposal is to deepen or plug back, give data on present productive zone and proposed new productive zone. If proposal is to drill or deepen directionally, give pertinent data on subsurface locations and measured and true vertical depths. Give blowout preventer program, if any.

24.

SIGNED

TITLE Authorized Agent

DATE 1/6/89

(This space for Federal or State office use)

PERMIT NO.

APPROVAL DATE

APPROVED

AS AMENDED

DATE

MAR 31 1989

AREA MANAGER

APPROVED BY
CONDITIONS OF APPROVAL, IF ANY:

*See Instructions On Reverse Side

NEW MEXICO OIL CONSERVATION COMMISSION WELL LOCATION AND ACREAGE DEDICATION PLAT

Form C-1
Superseded
Effective 1-1-81

All distances must be from the outer boundaries of the Section.

Operator UNION TEXAS PETROLEUM			Lease JOHNSTON FEDERAL			Well No. 23
Unit Letter I	Section 35	Township 31N	Range 9W	County San Juan		

Actual Footage Location of Well:
 1590 feet from the South line and 1000 feet from the East line
 Ground Level Elev. **5942**
 Producing Formation **Fruitland**
 Pool **Basin Fract. Coal Ignacio Blanco**
 Dedicated Acreage: **320 315.09** Acres

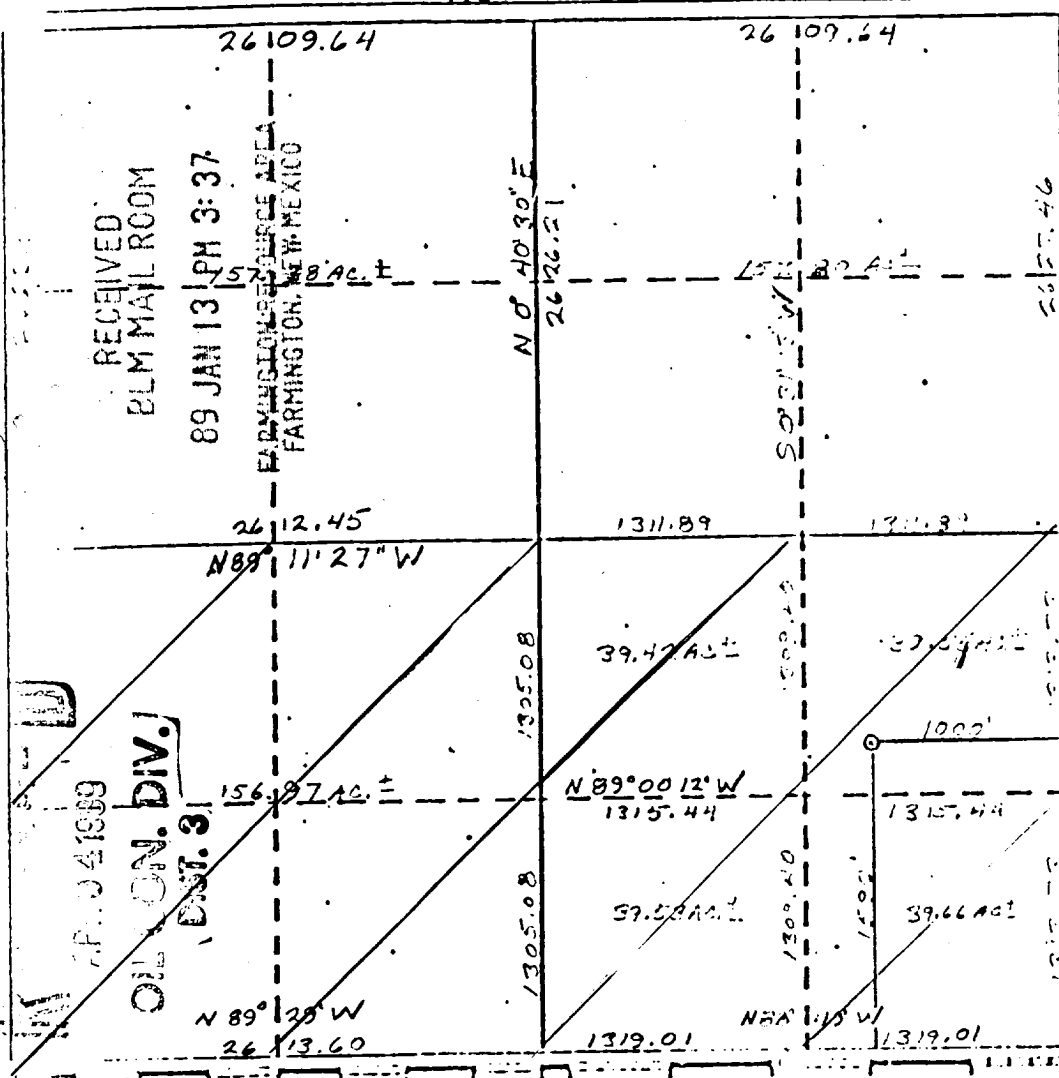
1. Outline the acreage dedicated to the subject well by colored pencil or hatchure marks on the plat below.
2. If more than one lease is dedicated to the well, outline each and identify the ownership thereof (both as to working interest and royalty).
3. If more than one lease of different ownership is dedicated to the well, have the interests of all owners been consolidated by communitization, unitization, force-pooling, etc?

☒ Yes ☐ No If answer is "yes," type of consolidation _____

If answer is "no," list the owners and tract descriptions which have actually been consolidated. (Use reverse side of this form if necessary.) _____

No allowable will be assigned to the well until all interests have been consolidated (by communitization, unitization, forced-pooling, or otherwise) or until a non-standard unit, eliminating such interests, has been approved by the Commission.

N 89° 13' W



CERTIFICATION

I hereby certify that the information contained herein is true and complete to the best of my knowledge and belief.

Name _____

Agent _____

Position _____

Company **Trigon Engineering**

Company _____

Date **4-6-89**

Date _____

I hereby certify that the well location shown on this plat was obtained from first notes of actual survey made by me under supervision, and that the same is true and correct to the best of my knowledge and belief.

Cecil B. Tullis

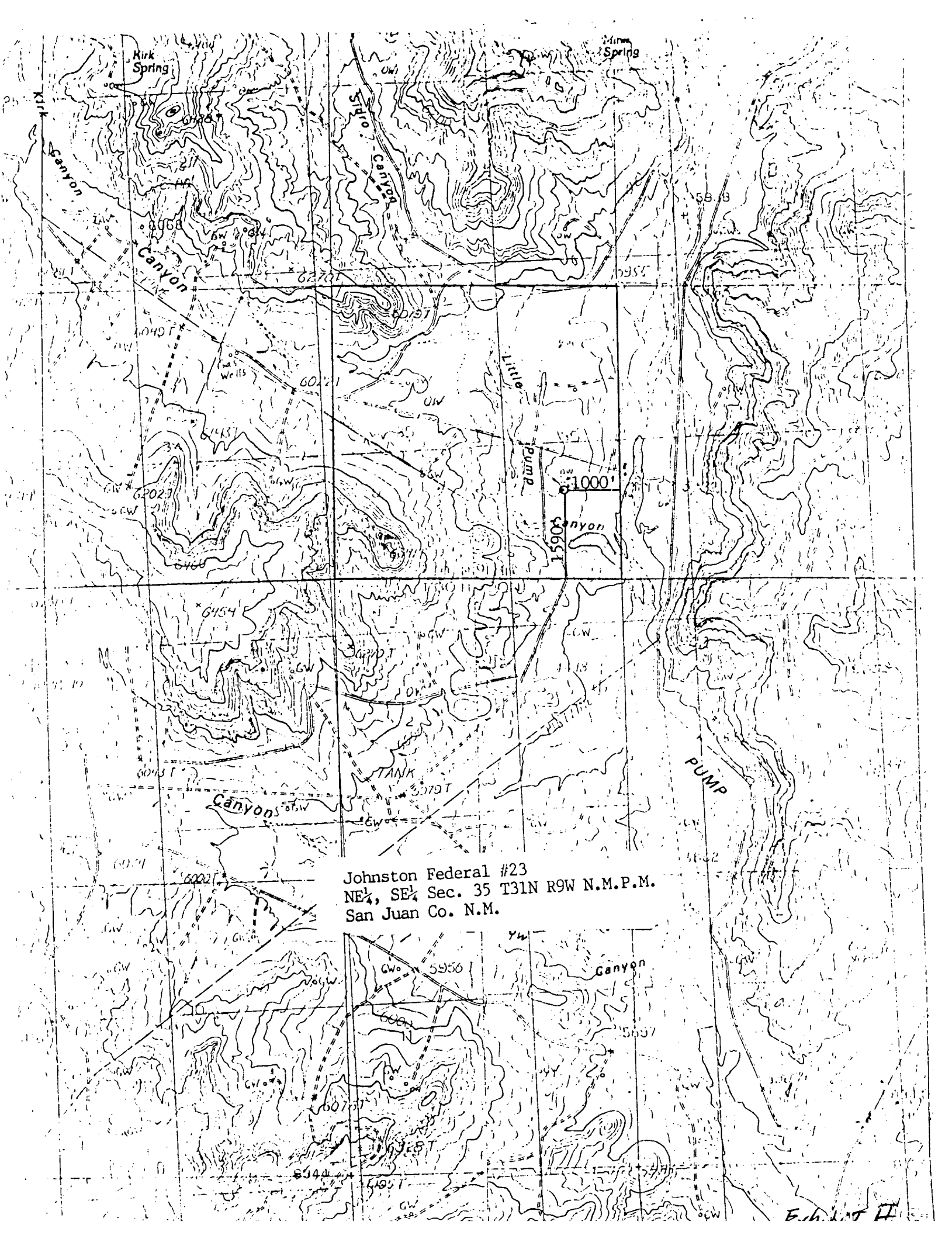
Date Surveyed _____

October 18, 1988

Registered Professional Engineer
and/or Land Surveyor

Cecil B. Tullis
Certificate No. _____

9672



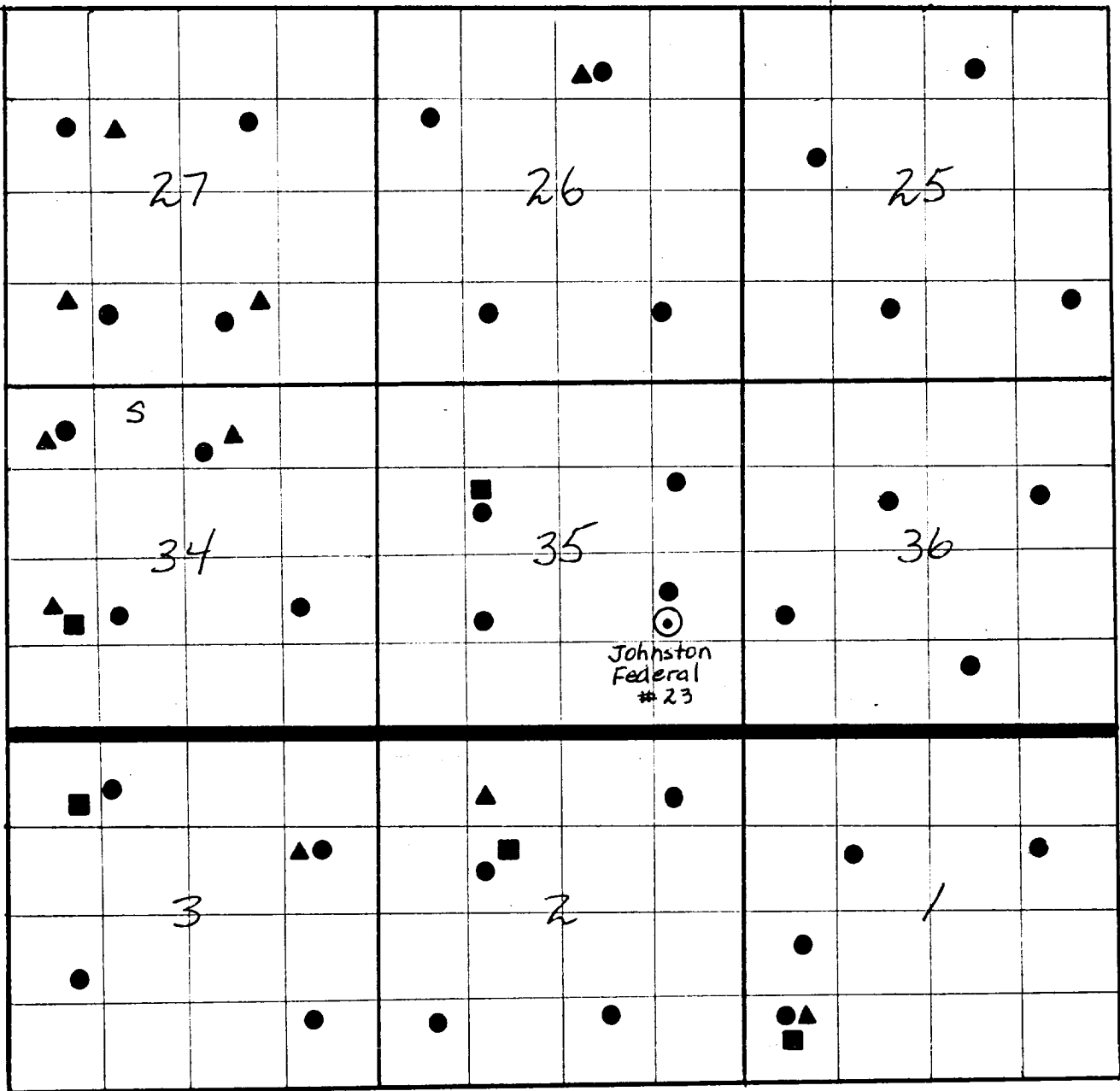
Johnston Federal #23
NE $\frac{1}{4}$, SE $\frac{1}{4}$ Sec. 35 T31N R9W N.M.P.M.
San Juan Co. N.M.

JOHNSTON FEDERAL #23

R 9 W

T
31
N

T
30
N



- Mesa Verde
- ▲ Dakota
- Fruitland Coal
- S Salt Water Disposal Well