

20-145-378

UNITED STATES  
DEPARTMENT OF THE INTERIOR  
BUREAU OF LAND MANAGEMENT

RECEIVED  
BLM MAIL ROOM

89 MAR 17 PM 1:26  
APPLICATION FOR PERMIT TO DRILL, DEEPEN, OR PLUG BACK

1a. TYPE OF WORK DRILL	5. LEASE NUMBER SF-078115
1b. TYPE OF WELL GAS SINGLE ZONE	6. IF INDIAN, ALL. OR TRIBE NAME
2. OPERATOR SOUTHLAND ROYALTY CO.	7. UNIT AGREEMENT NAME
3. ADDRESS & PHONE NO. OF OPERATOR P O BOX 4289 FARMINGTON, NM 87499	8. FARM OR LEASE NAME GRENIER
4. LOCATION OF WELL 1865'S 1330'W	9. WELL NO. 102
14. DISTANCE IN MILES FROM NEAREST TOWN 8 MILES FROM AZTEC	10. FIELD, POOL, OR WILDCAT BASIN FRUITLAND COAL
	11. SEC. T. R. M OR BLK. K SEC. 18 T31N R11W NMPM
15. DISTANCE FROM PROPOSED LOCATION 1330' TO NEAREST PROPERTY OR LEASE LINE.	12. COUNTY SAN JUAN
16. ACRES IN LEASE 2439.39	13. STATE NM
17. ACRES ASSIGNED TO WELL 320.40	
18. DISTANCE FROM PROPOSED LOCATION TO NEAREST WELL DR. 400' COMPL., OR APPLIED FOR ON THIS LEASE.	20. ROTARY OR CABLE TOOLS ROTARY
19. PROPOSED DEPTH 2650'	
21. ELEVATIONS (DF, FT, GR, ETC.) 6090'GL	22. APPROX. DATE WORK WILL START
23. PROPOSED CASING AND CEMENTING PROGRAM	

\*SEE OPERATIONS PLAN

RECEIVED

APR 07 1989

24. AUTHORIZED BY: *John Bradfield*  
REGULATORY AFFAIRS

OIL CON. DIV 3-16-89  
DIST. 3 DATE

NOTE: THIS FORMAT IS ISSUED IN LIEU OF US BLM FORM 3160-3.

ok  
NMCCO

APR 05 1989  
AREA MANAGER

# OPERATIONS PLAN

DATE: MAR 14, 1989

Well Name: 102 GRENIER 1865'S 1330'W  
 Sec. 18 T31N R11W SAN JUAN NEW MEXICO  
 BASIN FRUITLAND COAL Elevation 6090'GL

Formation tops: Surface- NACIMIENTO  
 Ojo Alamo- 925  
 Kirtland- 1020  
 Fruitland- 2263  
 Fruitland Coal Top- 2565  
 Fruitland Coal Base- 2631  
 Intermediate TD- 2555  
 Total Depth- 2650  
 Pictured Cliffs- 2659

Logging Program: Mud logs from intermediate to total depth.

Mud Program: Low solid non-dispersed mud from surface to total depth.

Casing Program:	Hole Size	Depth Interval	Csg. Size	Weight	Grade
	12 1/4"	0 - 200	9 5/8"	32.3#	H-40
	8 3/4"	0 - 2555	7"	20.0#	K-55
	6 1/4"	2505 - 2650	5 1/2"	15.5#	K-55
Tubing Program:		0 - 2650	2 7/8"	6.5#	J-55

Float Equipment: 9 5/8" surface casing - saw tooth guide shoe.

7" intermediate casing - guide shoe and self-fill insert float valve. Three centralizers run every other joint above shoe. Run insert float one joint above the guide shoe.

5 1/2" production liner - float shoe on bottom and a pre-drilled liner run to the 7" casing with a minimum 50' overlap. Liner hanger is a double slip grip type.

Wellhead Equipment: 9 5/8" x 7" x 2 7/8" x 11" 3000 psi xmas tree assembly.

## Cementing:

9 5/8" surface casing - cement with 106 sacks of class "B" cement with 1/4# flocele/sack and 3% calcium chloride (125 cu ft. of slurry, 100% excess to circulate to surface). WOC 12 hours. Test casing to 600 psi for 30 minutes.

7" intermediate casing - lead with 193 sacks of 65/35 class "B" poz with 6% gel, 2% calcium chloride and 1/2 cu.ft. Perlite/sack (10.3 gallons of water/sack) tail with 100 sacks of class "B" with 2% calcium chloride. 490 cu ft. of slurry, 100% excess to cover the Ojo Alamo. Run temperature survey at 8 hours. WOC 12 hours. Test casing to 1500 psi for 30 minutes.

5 1/2" liner - do not cement.

The Fruitland coal formation will be completed.

A 3000 psi WP and 6000 psi test double gate preventer equipped with blind and pipe rams will be used for blow out prevention on this well. This gas is dedicated.

The W/2 of Section 18 is dedicated to this well.

## OIL CONSERVATION DIVISION

STATE OF NEW MEXICO  
ENERGY AND MINERALS DEPARTMENTP. O. BOX 2088  
SANTA FE, NEW MEXICO 87501Form C-102  
Revised 10-1-

All distances must be from the outer boundaries of the Section.

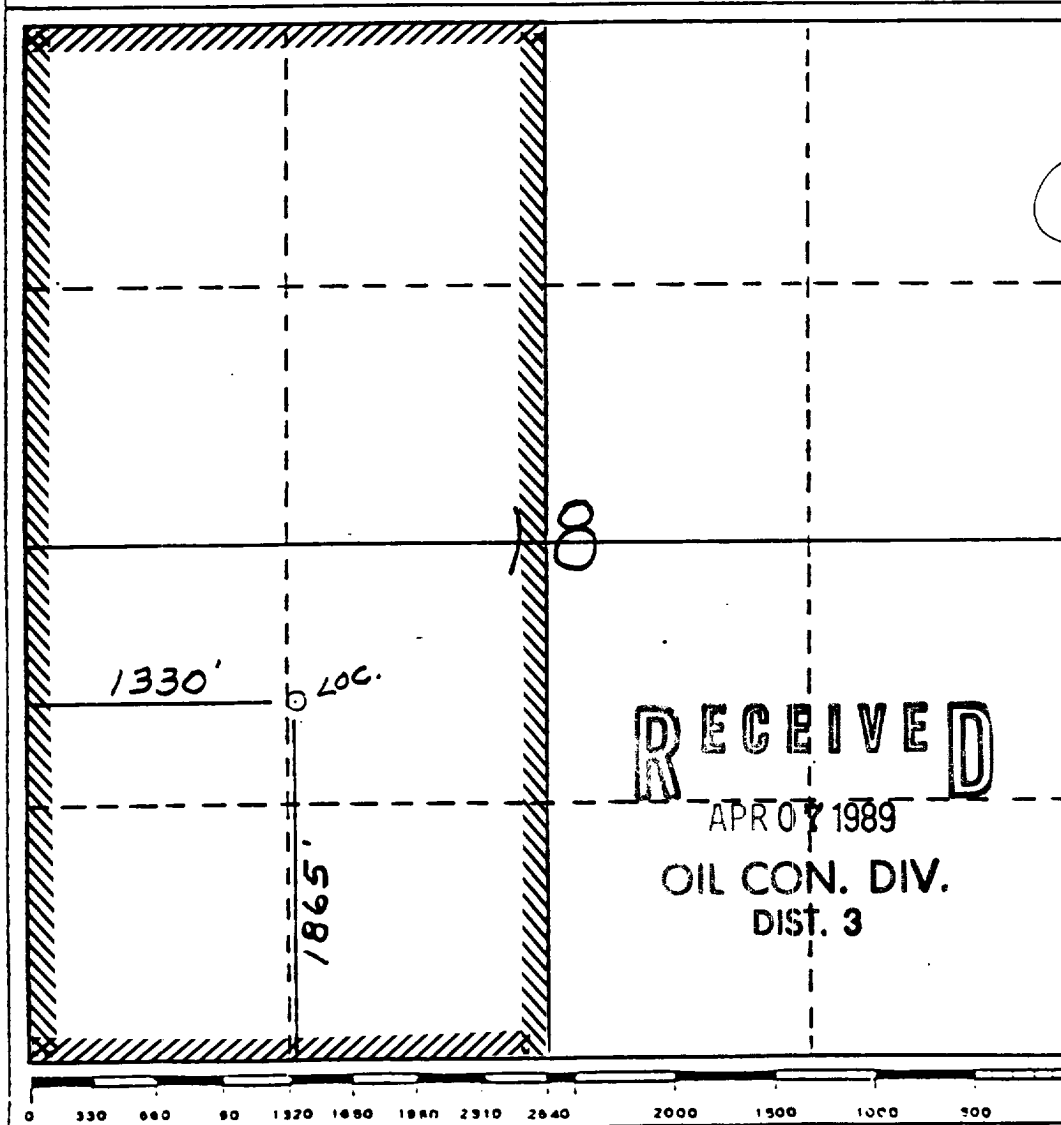
Operator <b>Southland Royalty Company</b>			Lease <b>Grenier (SF-078115)</b>		Well No. <b>102</b>
Unit Letter <b>K</b>	Section <b>18</b>	Township <b>31 North</b>	Range <b>11 West</b>	County <b>San Juan</b>	
Actual Postage Location of Well: <b>1865</b> feet from the <b>South</b> line and <b>1330</b> feet from the <b>West</b> line					
Ground Level Elev. <b>6090'</b>	Producing Formation <b>Fruitland Coal</b>		Pool <b>Basin</b>		Dedicated Acreage: <b>320.40</b> Acres

1. Outline the acreage dedicated to the subject well by colored pencil or hatchure marks on the plat below.
2. If more than one lease is dedicated to the well, outline each and identify the ownership thereof (both as to working interest and royalty).
3. If more than one lease of different ownership is dedicated to the well, have the interests of all owners been consolidated by communitization, unitization, force-pooling, etc?

☐ Yes ☐ No If answer is "yes," type of consolidation \_\_\_\_\_

If answer is "no," list the owners and tract descriptions which have actually been consolidated. (Use reverse side of this form if necessary.) \_\_\_\_\_

No allowable will be assigned to the well until all interests have been consolidated (by communitization, unitization, forced-pooling, or otherwise) or until a non-standard unit, eliminating such interests, has been approved by the Division.



## CERTIFICATION

I hereby certify that the information contained herein is true and complete to the best of my knowledge and belief.

Name

Regulatory Affairs

Position

Southland Royalty C

Company

3-15-89

Date

I hereby certify that the well location shown on this plat was plotted from field notes of actual surveys made by me or under my supervision, and that the same is true and correct to the best of my knowledge and belief.

Date Surveyed

11-30-88

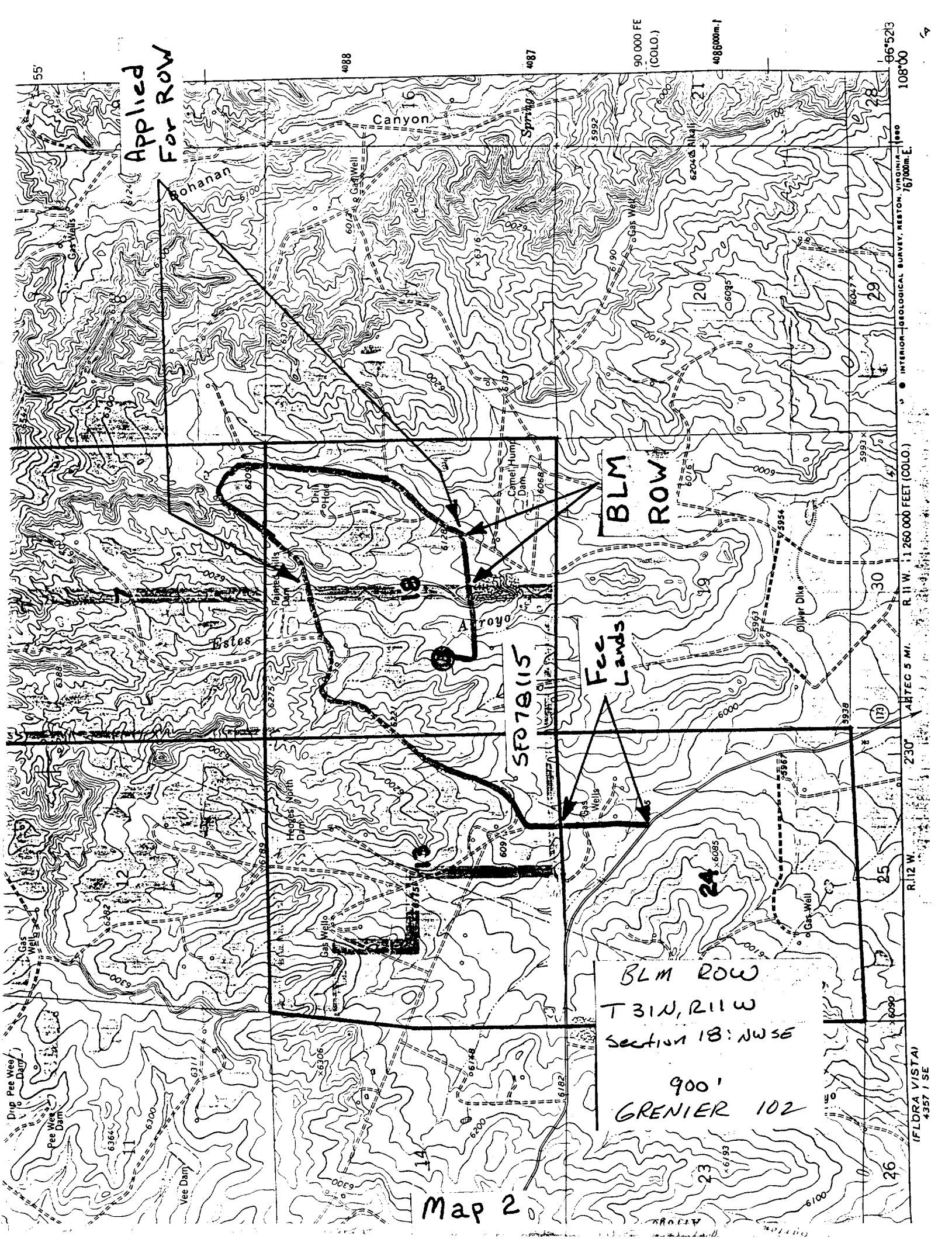
Registered Professional Engineer  
and/or Land Surveyor

Neale C. Edwards

Certificate No.

6857

Applied  
For ROW



BLM  
ROW

Fec  
Lands

SF07815

BLM ROW  
T 31N, R 11W  
Section 18: NWSE

900'  
GRENIER 102

Map 2

INTERIOR GEOLOGICAL SURVEY, RESTON, VIRGINIA 22192  
R 11 W, 1:260 000 FEET (COLO.)  
R 12 W, 1:230'  
4357' SE  
(FLORA VISTA)  
4357' SE