

13-15-27287

UNITED STATES  
DEPARTMENT OF THE INTERIOR  
BUREAU OF LAND MANAGEMENT

APPLICATION FOR PERMIT TO DRILL, DEEPEN, OR PLUG BACK

1a. TYPE OF WORK DRILL 1b. TYPE OF WELL GAS            SINGLE ZONE	5. LEASE NUMBER NM-6893 6. IF INDIAN, ALL. OR TRIBE NAME  7. UNIT AGREEMENT NAME  8. FARM OR LEASE NAME WILMER CANYON 9. WELL NO. 100
2. OPERATOR SOUTHLAND ROYALTY CO.	10. FIELD, POOL, OR WILDCAT BASIN    FRUITLAND COAL 11. SEC. T. R. M OR BLK. K SEC. 24 T32N R08W NMPM
3. ADDRESS & PHONE NO. OF OPERATOR P O BOX 4289 FARMINGTON, NM 87499	12. COUNTY            13. STATE SAN JUAN            NM
4. LOCATION OF WELL 1495'S 1765'W	14. DISTANCE IN MILES FROM NEAREST TOWN 20 MILES FROM NAVAJO DAM
15. DISTANCE FROM PROPOSED LOCATION    1495' TO NEAREST PROPERTY OR LEASE LINE.	16. ACRES IN LEASE    17. ACRES ASSIGNED TO WELL 640                      320.00
18. DISTANCE FROM PROPOSED LOCATION TO NEAREST WELL DR.    800' COMPL., OR APPLIED FOR ON THIS LEASE.	19. PROPOSED DEPTH    20. ROTARY OR CABLE TOOLS 3534'                      ROTARY
21. ELEVATIONS (DF, FT, GR, ETC.) 6858'GL	22. APPROX. DATE WORK WILL START

This action is subject to technical and  
procedural review pursuant to 43 CFR 3165.3  
and appeal pursuant to 43 CFR 3165.4.

23. PROPOSED CASING AND CEMENTING PROGRAM

\*SEE OPERATIONS PLAN

DRILLING OPERATIONS AUTHORIZED ARE  
SUBJECT TO COMPLIANCE WITH ATTACHED  
"GENERAL REQUIREMENTS".

24. AUTHORIZED BY: *[Signature]*  
REGULATORY AFFAIRS

4-7-89  
DATE

NOTE: THIS FORMAT IS ISSUED IN LIEU OF US BLM FORM 3160-3.

APPROVED  
AS AMENDED

APR 12 1989

Linda Rundell  
FOR AREA MANAGER

OK  
E  
NMOCC

# OPERATIONS PLAN

DATE: MAR 15, 1989

Well Name: 100 WILMER CANYON  
 Sec. 24 T32N R08W  
 BASIN FRUITLAND COAL

1495'S 1765'W  
 SAN JUAN NEW MEXICO  
 Elevation 6858'GL

Formation tops: Surface- SAN JOSE  
 Ojo Alamo- 2501  
 Kirtland- 2539  
 Fruitland- 3304  
 Fruitland Coal Top- 3413  
 Fruitland Coal Base- 3700  
 Intermediate TD- 3393  
 Total Depth- 3534  
 Pictured Cliffs- 3703

Logging Program: Mud logs from intermediate to total depth.

Mud Program: Low solid non-dispersed mud from surface to total depth.

Casing Program:	Hole Size	Depth Interval	Csg. Size	Weight	Grade
	12 1/4"	0 - 200	9 5/8"	32.3#	H-40
	8 3/4"	0 - 3393	7"	20.0#	K-55
	6 1/4"	3343 - 3534	5 1/2"	15.5#	K-55
Tubing Program:		0 - 3534	2 7/8"	6.5#	J-55

Float Equipment: 9 5/8" surface casing - saw tooth guide shoe.

7" intermediate casing - guide shoe and self-fill insert float valve. Three centralizers run every other joint above shoe. Run insert float one joint above the guide shoe.

5 1/2" production liner - float shoe on bottom and a pre-drilled liner run to the 7" casing with a minimum 50' overlap. Liner hanger is a double slip grip type.

Wellhead Equipment: 9 5/8" x 7" x 2 7/8" x 11" 3000 psi xmas tree assembly.

## Cementing:

9 5/8" surface casing - cement with 106 sacks of class "B" cement with 1/4# flocele/sack and 3% calcium chloride (125 cu ft. of slurry, 100% excess to circulate to surface). WOC 12 hours. Test casing to 600 psi for 30 minutes.

7" intermediate casing - lead with 78 sacks of 65/35 class "B" poz with 6% gel, 2% calcium chloride and 1/2 cu.ft. Perlite/sack (10.3 gallons of water/sack) tail with 100 sacks of class "B" with 2% calcium chloride. 268 cu ft. of slurry, 100% excess to cover the Ojo Alamo. Run temperature survey at 8 hours. WOC 12 hours. Test casing to 1500 psi for 30 minutes.

5 1/2" liner - do not cement.

The Fruitland coal formation will be completed.

A 3000 psi WP and 6000 psi test double gate preventer equipped with blind and pipe rams will be used for blow out prevention on this well. This gas is dedicated.

The W/2 of Section 24 is dedicated to this well.

All distances must be from the outer boundaries of the Section.

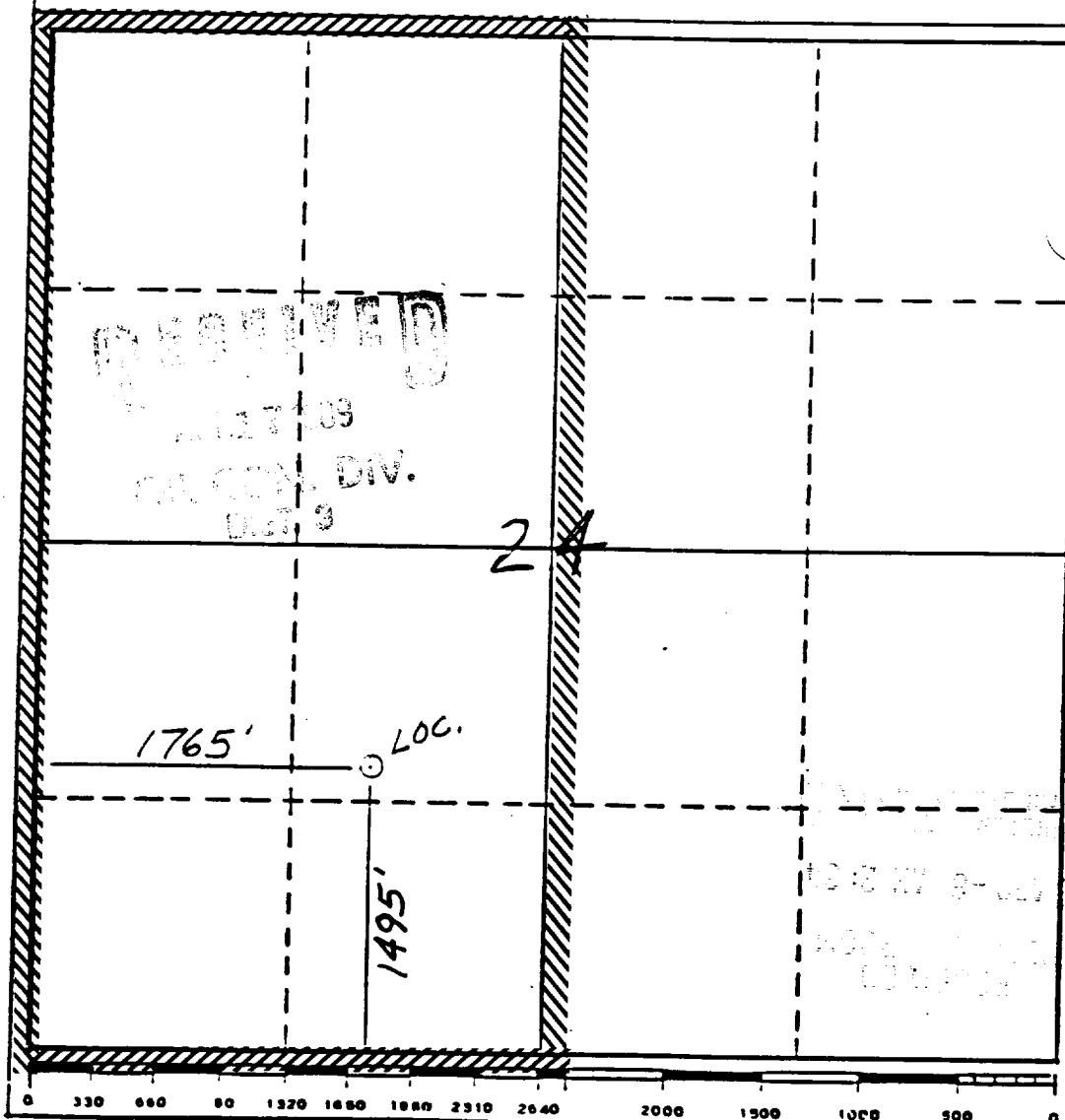
Operator Southland Royalty Company			Lease Wilmer Canyon (NM-6893)		Well No. 100
Unit Letter H	Section 24	Township 32 North	Range 8 West	County San Juan	
Actual Footage Location of Well: 1495 feet from the South line and 1765 feet from the West line					
Ground Level Elev. 6350	Producing Formation Fruitland Coal		Pool Basin	Dedicated Acreage: 320	

1. Outline the acreage dedicated to the subject well by colored pencil or hachure marks on the plat below.
2. If more than one lease is dedicated to the well, outline each and identify the ownership thereof (both as to working interest and royalty).
3. If more than one lease of different ownership is dedicated to the well, have the interests of all owners been consolidated by communitization, unitization, force-pooling, etc?

☐ Yes ☐ No If answer is "yes," type of consolidation \_\_\_\_\_

If answer is "no," list the owners and tract descriptions which have actually been consolidated. (Use reverse side of this form if necessary.) \_\_\_\_\_

No allowable will be assigned to the well until all interests have been consolidated (by communitization, unitization, forced-pooling, or otherwise) or until a non-standard unit, eliminating such interests, has been approved by the Division.



CERTIFICATION

I hereby certify that the information contained herein is true and complete to the best of my knowledge and belief.

*John R. Haddock*

Name  
Regulatory Affairs

Position  
Southland Royalty Co

Company  
4-7-89

Date

I hereby certify that the location shown on this plat was plotted from field notes of actual surveys made by me or under my supervision, and that the same is true and correct to the best of my knowledge and belief.

*Neale C. Edwards*

Date Surveyed  
7-25-88

Registered Professional Engineer  
and/or Land Surveyor

Neale C. Edwards

Certificate No.  
6857

Existing or  
Applied for ROW

BLM  
ROW

BLM  
ROW

NM 6893

BLM ROW

T32N, R8W

Section 13 S2SW 2700'

24 W2NE 1100'

Map 2